

Healthy School Meals for All



COLORADO
Department of Education



COLORADO
Department of Education

Zoom Information

Mute/
unmute

Video

Chat

Closed
Captions

Unmute

Start Video

Participants 2

Chat

Share Screen

Record

Live Transcript

Reactions

Leave

Non-Discrimination Statement

In accordance with federal civil rights law and U.S. Department of Agriculture (USDA) civil rights regulations and policies, this institution is prohibited from discriminating on the basis of race, color, national origin, sex (including gender identity and sexual orientation), disability, age, or reprisal or retaliation for prior civil rights activity.

Program information may be made available in languages other than English. Persons with disabilities who require alternative means of communication to obtain program information (e.g., Braille, large print, audiotape, American Sign Language), should contact the responsible state or local agency that administers the program or USDA's TARGET Center at (202) 720-2600 (voice and TTY) or contact USDA through the Federal Relay Service at (800) 877-8339.

To file a program discrimination complaint, a Complainant should complete a Form AD-3027, USDA Program Discrimination Complaint Form which can be obtained online at: <https://www.usda.gov/sites/default/files/documents/USDA-OASCR%20P-Complaint-Form-0508-0002-508-11-28-17Fax2Mail.pdf>, from any USDA office, by calling (866) 632-9992, or by writing a letter addressed to USDA. The letter must contain the complainant's name, address, telephone number, and a written description of the alleged discriminatory action in sufficient detail to inform the Assistant Secretary for Civil Rights (ASCR) about the nature and date of an alleged civil rights violation. The completed AD-3027 form or letter must be submitted to USDA by:

1. mail:

U.S. Department of Agriculture
Office of the Assistant Secretary for Civil Rights
1400 Independence Avenue, SW
Washington, D.C. 20250-9410; or

2. fax:

(833) 256-1655 or (202) 690-7442; or

3. email:

program.intake@usda.gov.

This institution is an equal opportunity provider.



CDE School Nutrition Unit



VISION

Nourish young bodies and minds.
End childhood hunger.

We support the child nutrition community through innovation, training, and partnerships to ensure all youth have access to healthy meals.

MISSION



Learning Objectives

- Identify the program regulations for the Local Food and Wages & Stipends Programs
- Relate funding opportunities to your current operations to identify needs



Healthy School Meals for All: Year 1



Healthy School Meals for All

Provides funding opportunities to CO public school food authorities participating in the National School Lunch or School Breakfast Programs

Year 1:

- Reimbursement for meals provided to students who would otherwise pay full price
- Maximizing federal funding

Year 2 (+ beyond):

- Funding to purchase local food
- Funding to increase wages or provide stipends to kitchen staff
 - Technical assistance for SFAs and producers via nonprofit partner

For School Year 2022-23, all 183 eligible sponsors opted to participate in Healthy School Meals for All!



Initial Implementation Feedback

- Participation Increases*
 - Breakfast: 26% free, -51% reduced, 104% paid
 - Lunch: 9% free, -36% reduced, 68% paid
- *data not yet finalized
- Highlights: feeding new students, charter schools, service model innovations, excitement for school meals
- Challenges: product shortages/supply chain challenges, time to eat, staffing, equipment/infrastructure, technology vendors



Supporting Resources

**Healthy School Meals
for All Program**



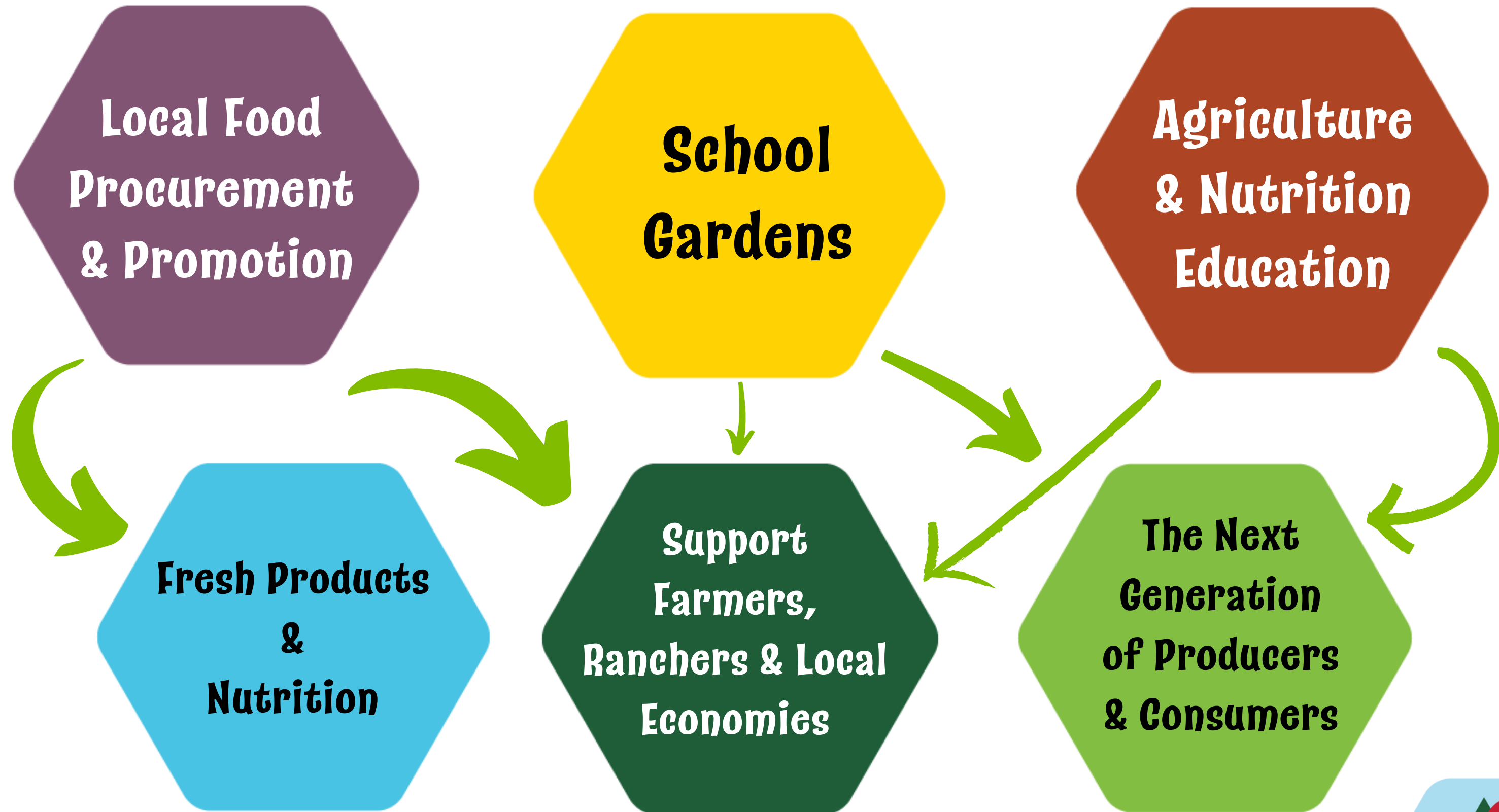
**[https://www.cde.state.co.us/nutrition/
healthy-school-meals-for-all-program](https://www.cde.state.co.us/nutrition/healthy-school-meals-for-all-program)**



Local Food Program



Why Farm to School?



LFP Intent & History

The Local Food Program (LFP) offers sponsors funding for the purchase of Colorado grown, raised, minimally processed, and value-added products.

- Pilot program signed into law May 2019
- COVID -> Funding suspended
- Funding reinstated July 2021
- Original applicants awarded SY 21-22 funding
- First program year ended July 2022
- Second program year started Aug 2022
- Final pilot year SY 23-24
- Healthy Meals for All expansion SY 24-25!!!



1. Support CO producers
2. Increase CO foods in school nutrition programs



LFP Requirements

- Must complete application in grant system
 - Procurement plan required
- Creation/formation of Advisory Committee
- Monthly reporting of allowable products
- Participation in surveys
 - Administered by CDE
 - Local purchasing baseline data
- Audits
 - CDE will audit a sample of LFP sponsors yearly

Funding Estimator

Local Food Program Allocation Estimator	
Enter estimated annual lunch count	0
*Click here to find previous years lunch counts or estimate lunch counts based on your percentage increase or projections	
Estimated LFP allocation*	\$0.00
<i>*Note: This calculation is based on \$0.25 x lunch count from the information entered in the yellow cell (C4) above. Per legislation, if your estimated LFP allocation is less than \$5,000 (cell C7), then \$5,000 will be automatically used for the breakdown calculations below.</i>	
Breakdown of estimated allocation	
Estimated Colorado grown, raised, processed, and value-added purchases (78%)	-
Estimated allowable costs (10%)*	-
Estimated advisory council costs (12%)	-
*see definition of allowable costs on instructions tab	

[Link to the Funding Estimator](#)



LFP Funding EXAMPLE

District	SY 21-22 # lunch meals	Local Food Program Funds*	Local Foods	Value Added Processed Products (25%)	Allowable Costs (10%)	Advisory Committee (12%)
Denver Public Schools	11,225,752	\$2,806,438	\$1,487,412	\$701,610	\$280,644	\$336,772
Colorado Springs 11	3,437,872	\$859,468	\$455,518	\$214,867	\$85,947	\$103,136
Springfield RE-4	46,480	\$11,620	\$6159	\$2905	\$1162	\$1394

*previous SY lunch meals served x \$0.25 =
total local food program funds



Product Categories



Colorado grown, raised, processed products:
All raw fruits and vegetables, grains, meats, and dairy products (except liquid milk) grown or raised in Colorado.



Minimally processed products:

Raw or frozen fabricated products that retain their inherent character. (shredded carrots, shredded cheese, and dried products such as beans, or flour).



Value added processed products

Products that are altered from their unprocessed or minimally processed state through preservation techniques, including cooking, baking, or canning. (sauces, breads, cooked meat).

Choose



Use of LFP Funds

Colorado Foods (lunches served x \$0.25)

Colorado grown, raised, or processed products.

Fruits, vegetables, grains, meats, and dairy products, grown, raised, or processed in Colorado.

Value-added products that meet the standards for the Colorado Proud designation.

*liquid milk not allowable

Operating Costs:
acquiring, delivering,
preparing, serving local foods

Administrative Costs:
planning, managing required
documentation

Kitchen equipment
& supplies

Allowable Costs
(up to 10%)



Use of LFP Funds - Advisory Committee

Advisory Committee (up to 12%)

- Required to receive funding
- Include students & parents
- Must reflect racial, ethnic, and socioeconomic demographics of community
- Advise nutrition services on menu planning and culturally relevant, healthy, and appealing meals

Examples of funding use:

Students/Parents:

Remove barriers to participation to attend meetings (travel, interpretation services, incentives, food, childcare)

Districts:

Staffing and oversight of advisory council, operational costs

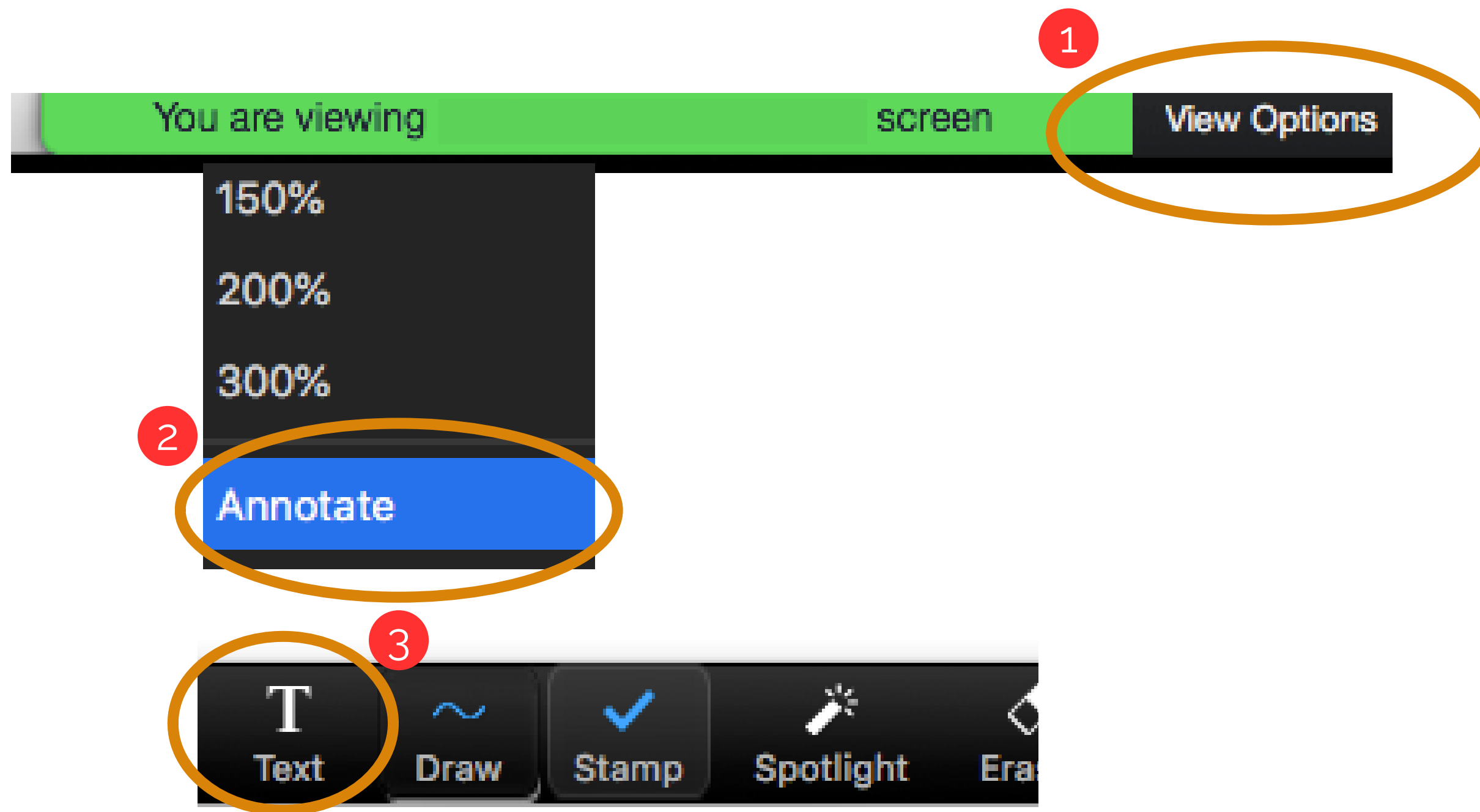


**Farm to
School
Census**

**Please complete your
farm to school census
ASAP!**

Personalized links for the Census
survey were emailed to each SFA
director from
Farm2SchoolCensus@dir-online.com.





**What initial
questions do you
have?**

**What resources
would help to be
prepared to use
these funds?**

**Open space - please
share any other
thoughts you
have!**

Wages & Stipends



Wages & Stipends Program

- Minimum of \$3,000 or \$0.12 per school lunch served in previous school year
- Funding is per SFA; allocation will be split among all schools
- In addition to employee's scheduled salary placement
- Employees that directly prepare and serve SBP/NSLP meals
 - Kitchen staff and kitchen managers
 - 90% of their time preparing meal ingredients, cooking, and directly serving meals



Use of Wages & Stipends Funds

- Can be used to cover the increased benefits costs directly associated with the wage increase
- In subsequent years, funds can be used to maintain wage increases or stipends
- If unable to spend funds within 2 year period, funds must be returned to CDE



Wages & Stipends Requirements

- Opt-in and complete application in grant system in SY 2024-25
- SFAs must provide documentation to CDE on the planned uses of funding
 - Yearly reporting of fund usage
 - Written plan for use of the funds
 - Proposed budget
 - Relevant job descriptions



Funding Estimator

Wages & Stipends Fund Allocation Estimator	
Enter estimated annual lunch count	0
<i>*Click here to find previous years lunch counts or estimate lunch counts based on your percentage increase or projections</i>	
Estimated Wages & Stipends allocation*	\$0.00
<i>*Note: This calculation is based on \$0.12 x lunch count from the information entered in the yellow cell (C4) above. Per legislation, if your estimated Wages & Stipends fund allocation is less than \$3,000 (cell C7), then \$3,000 will be automatically used for the breakdown calculations below.</i>	
Breakdown of estimated allocation	
Number of employees directly serving/prepping meals	0
Wage and/or Stipend allocation per employee	-
<i>*Funds in Cell C12 can be utilized for wages and/or stipends</i>	

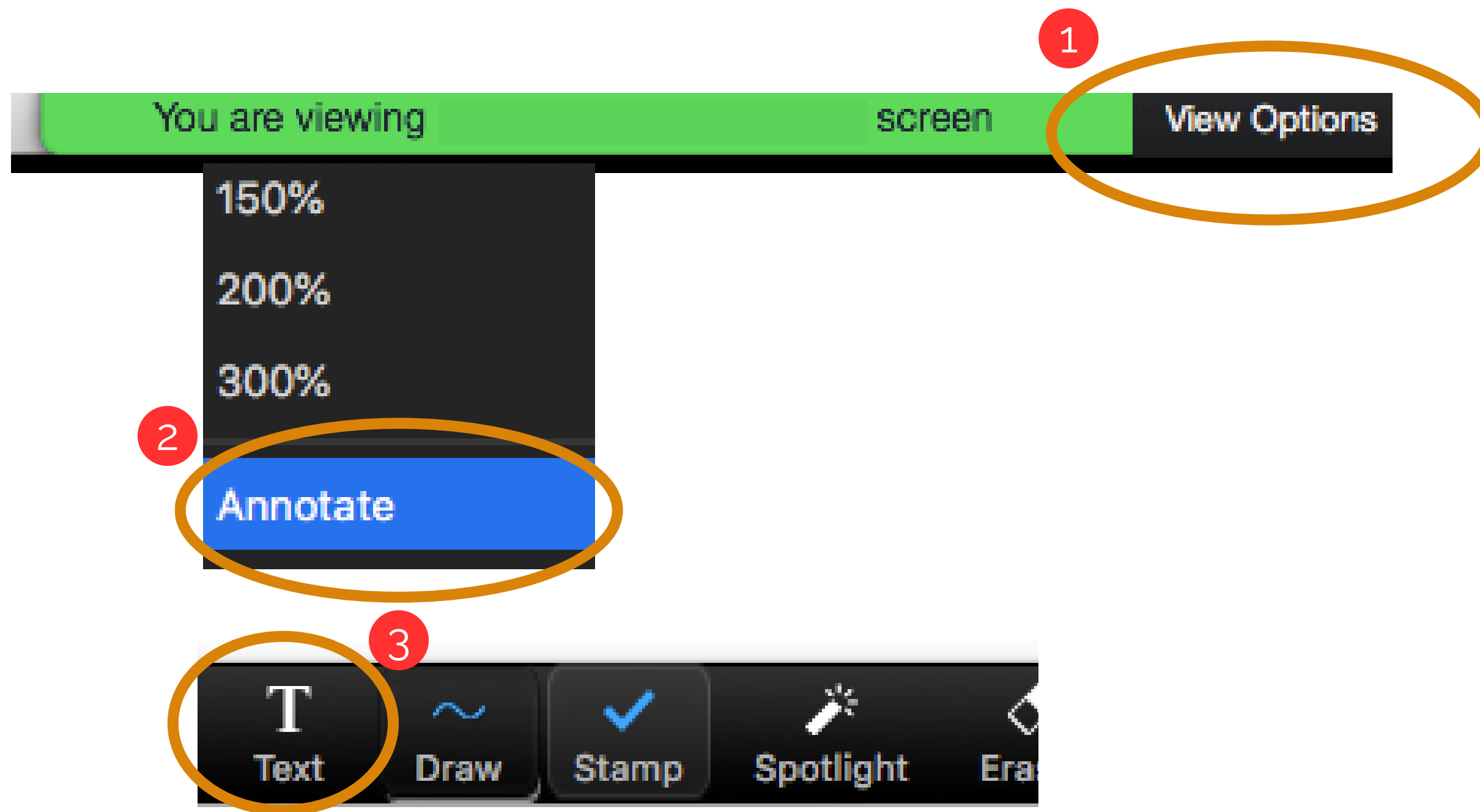
[Link to the Funding Estimator](#)



Best Practices / Scenarios



- Equitable wage increase for all individuals serving meals
- Work with district's finance office to determine salary schedule
- Combination of Wages and Stipends
 - Can utilize leftover funds to provide stipends at the end of SY
- More to come!



**What initial
questions do you
have?**

**What resources
would help to be
prepared to use
these funds?**

**Open space - please
share any other
thoughts you
have!**

What's Next?

- Training in early 2024
 - School Nutrition Training webpage
- Begin making plans spring 2024
- LFP applications due spring 2024
 - Will use CDE's new GAINS system
- Both programs due to start SY24-25

Read the Dish e-newsletter for information, trainings, updates, & deadlines!



Evaluation & Professional Standards

Training Evaluation: Please tell us how we did!

or

<https://www.surveymonkey.com/r/KPBCHF3>

Professional Standards: 3200 (1 hour)

Use the CDE Professional Standards Training Tracker to document Annual Training Requirements.



Questions?



Thank You!



COLORADO
Department of Education