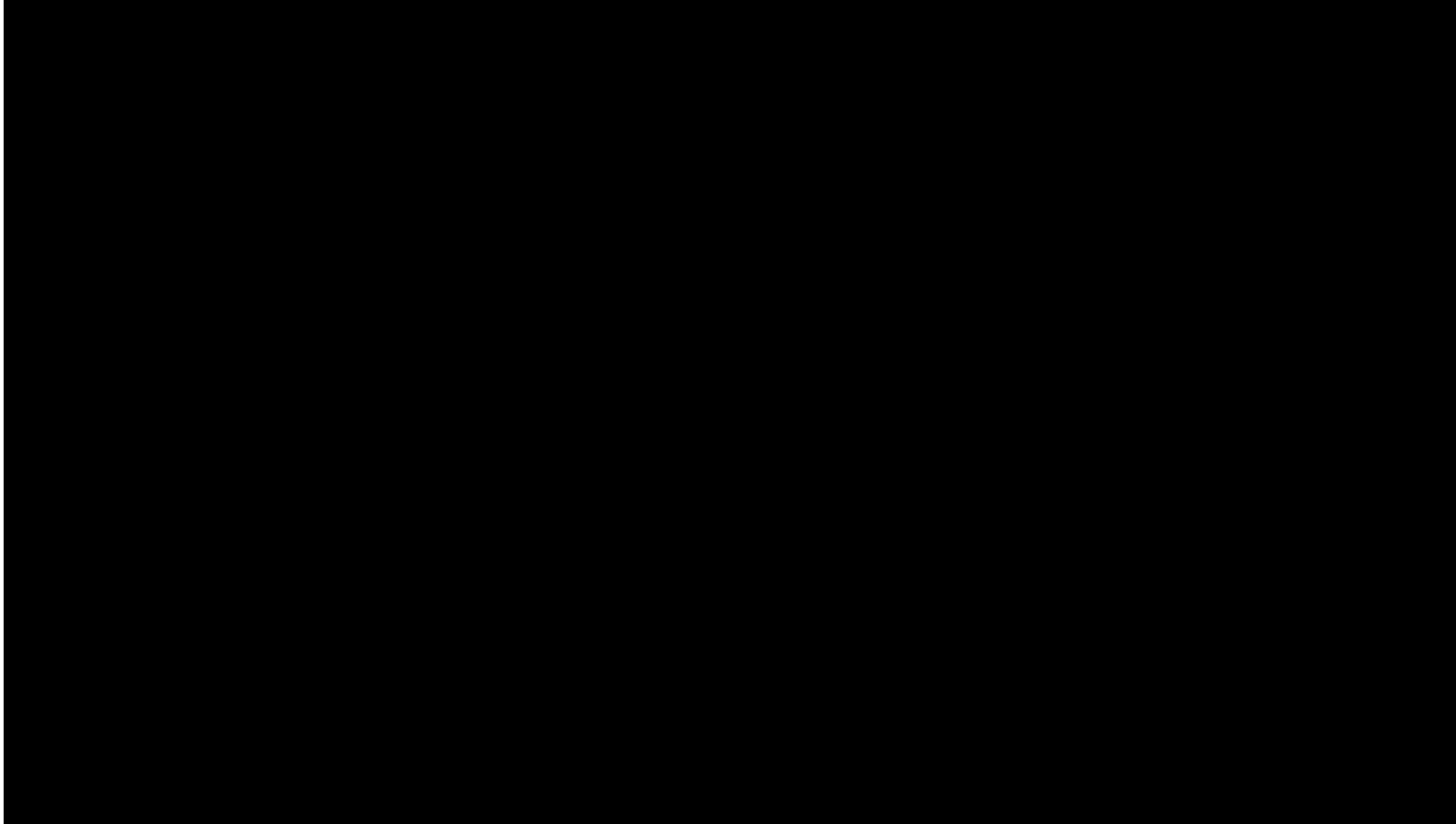


# FSCP Coffee Chat

November 17, 2023

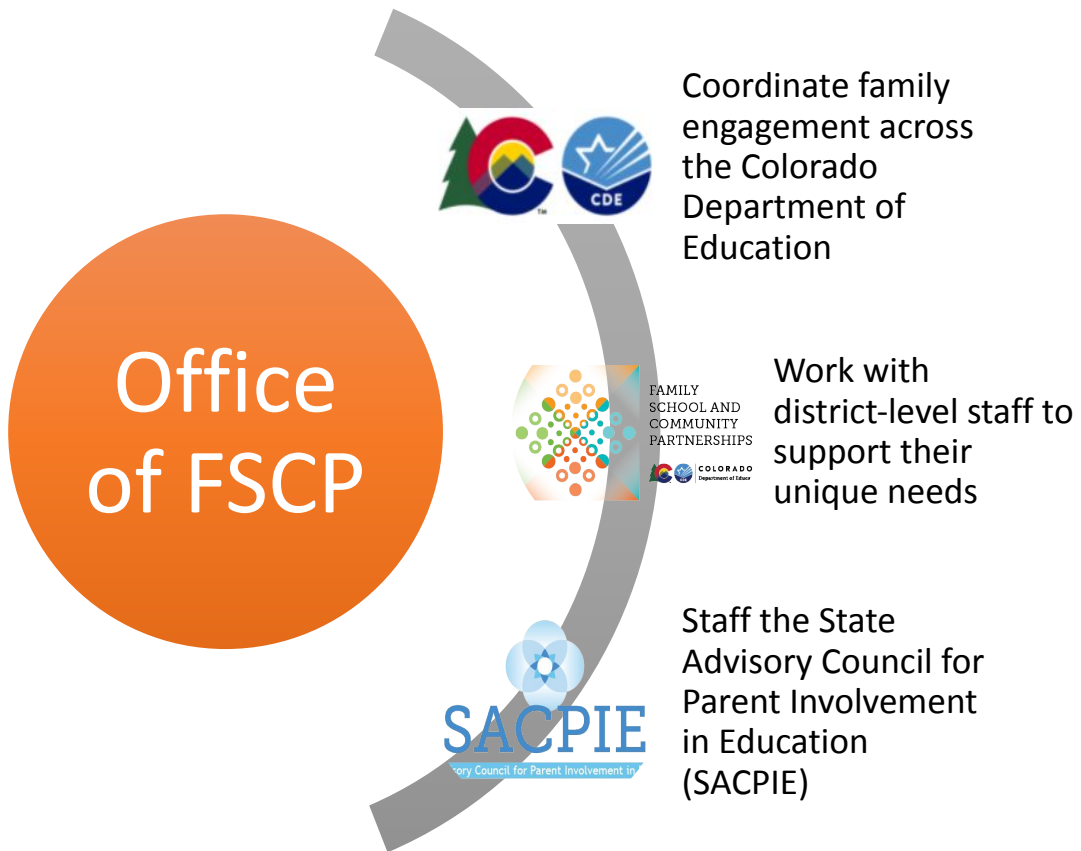
# Welcome and Introductions

# A Message from Commissioner Córdova



# Office of Family, School, and Community Partnerships

Systemic  
Support  
Structure



## Coffee Chats:

- Began February 2015
- Specific for district points of contact
- Opportunity to learn from each other
- Highlights promising practices
- Creates a community of collaboration

## Logistics:

- Meets monthly August-May
- Third Friday of the month
- Most virtual, some hybrid
- Problem of Practice during virtual chats



# Why THIS Coffee Chat?

**Annual FSCP District  
Leaders Retreat  
May 1-2, 2023.**



**Join us in Estes Park  
May 2-3, 2024!**

# Small Group Introductions

Name

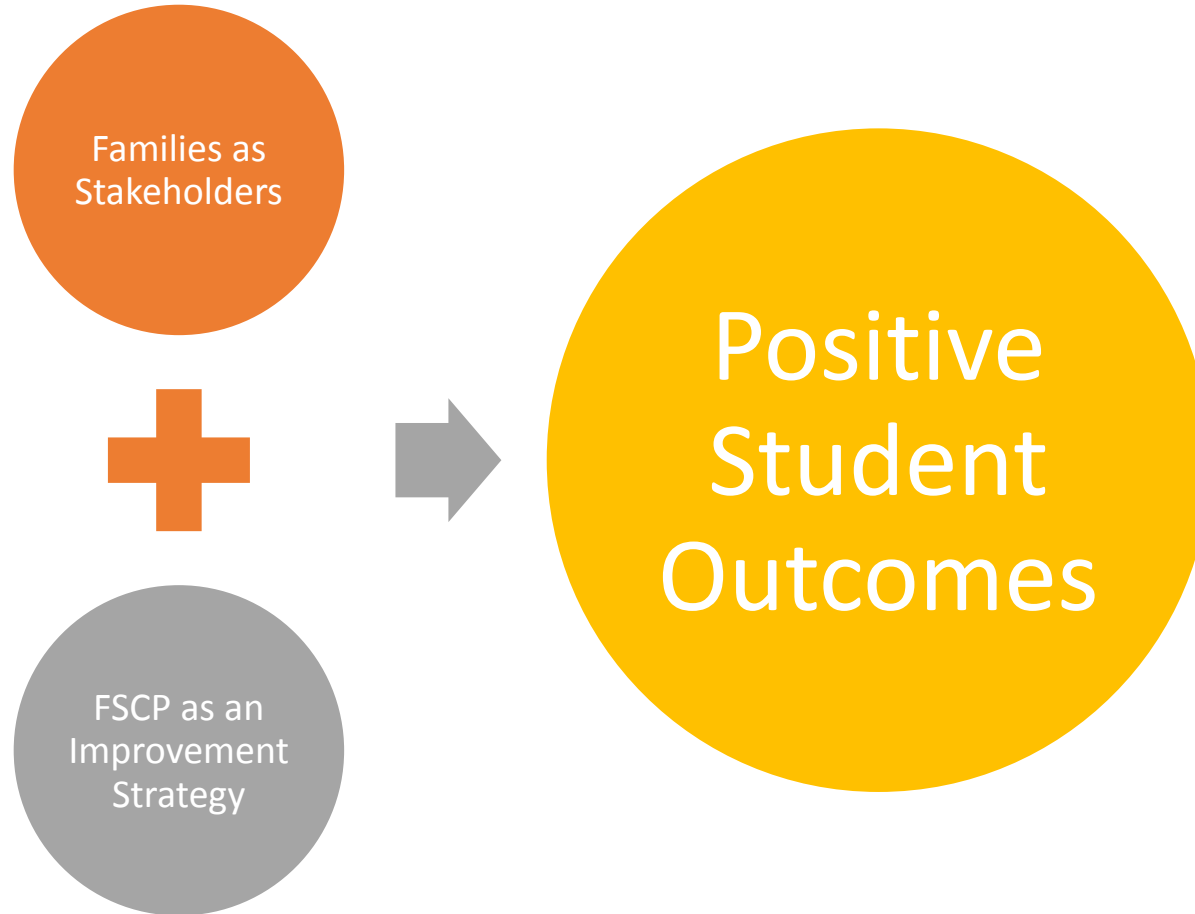
Role and District

Share one word that describes  
FSCP in your district now.

Share one word that you hope will  
describe FSCP in your district by the  
end of the year.

# Family, School, and Community Partnerships: An Essential Improvement Strategy

# The Why





# The Benefits of FSCP: Wins for Students and Families

## Students have:

- Higher grades and test scores
- Better attendance and engagement in class
- More positive attitudes and behavior
- Greater sense of efficacy and self-esteem
- Higher graduation rates and college/postsecondary attendance

## Families have:

- Better rapport with teachers and school staff
- Greater understanding of student progress and how to help

# The Benefits of FSCP: Wins for Districts, Schools, and Educators



More positive  
school climate

Higher morale and  
professional  
satisfaction

Greater retention  
of teachers

Increased  
multicultural  
awareness and  
appreciation

More support  
from families

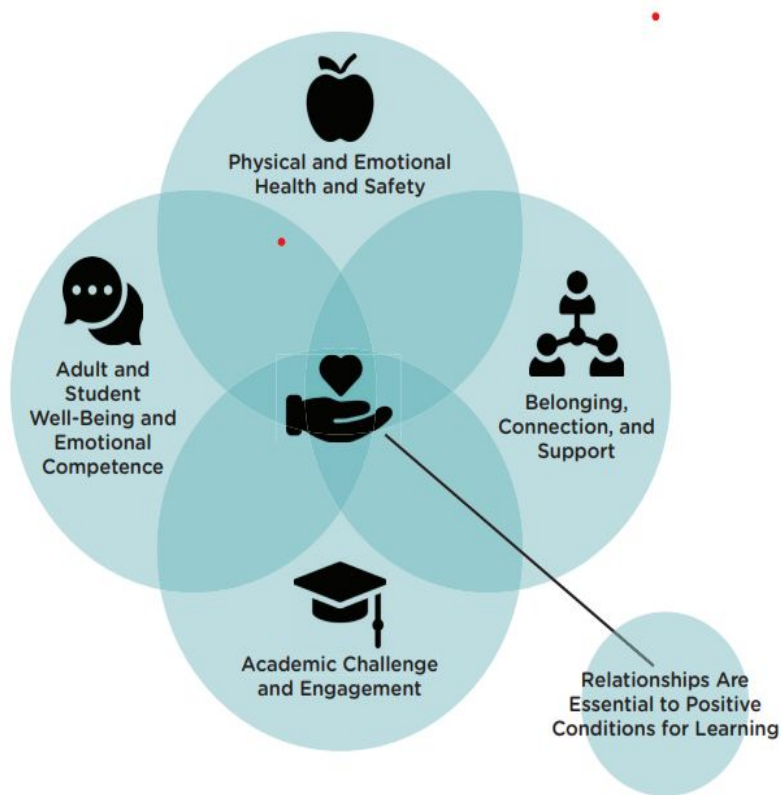
Better reputation  
and more support  
from the  
community

Reduced  
suspensions and  
high-risk behaviors

Increased high  
school graduation  
rates

# FSCP as an Improvement Strategy: Positive Conditions for Learning

Figure 1. Positive Conditions for Learning Lead to Students Being Engaged and Attending Regularly



## Positive Conditions for Learning:

- Relationships
- Physical/Emotional Health and Safety
- Belonging, Connection, and Support
- Academic Challenge and Engagement
- Adult and Student Well-Being and Emotional Competence

# The How: School-Level Partnerships

- Implementing the Framework of National Standards for Family-School Partnerships
  - Welcoming All Families into the School Community
  - Communicating Effectively
  - Supporting Student Success
  - Speaking Up for Every Child
  - Sharing Power
  - Collaborating with the Community
- Sharing Leadership
- Action Planning
- Evaluating

*Customized  
Comprehensive  
Continually Improved*

# Five Roles Families Play to Accelerate Student Learning



**COMMUNICATE**  
HIGH EXPECTATIONS



**MONITOR**  
THEIR CHILD'S PERFORMANCE



**SUPPORT**  
LEARNING AT HOME



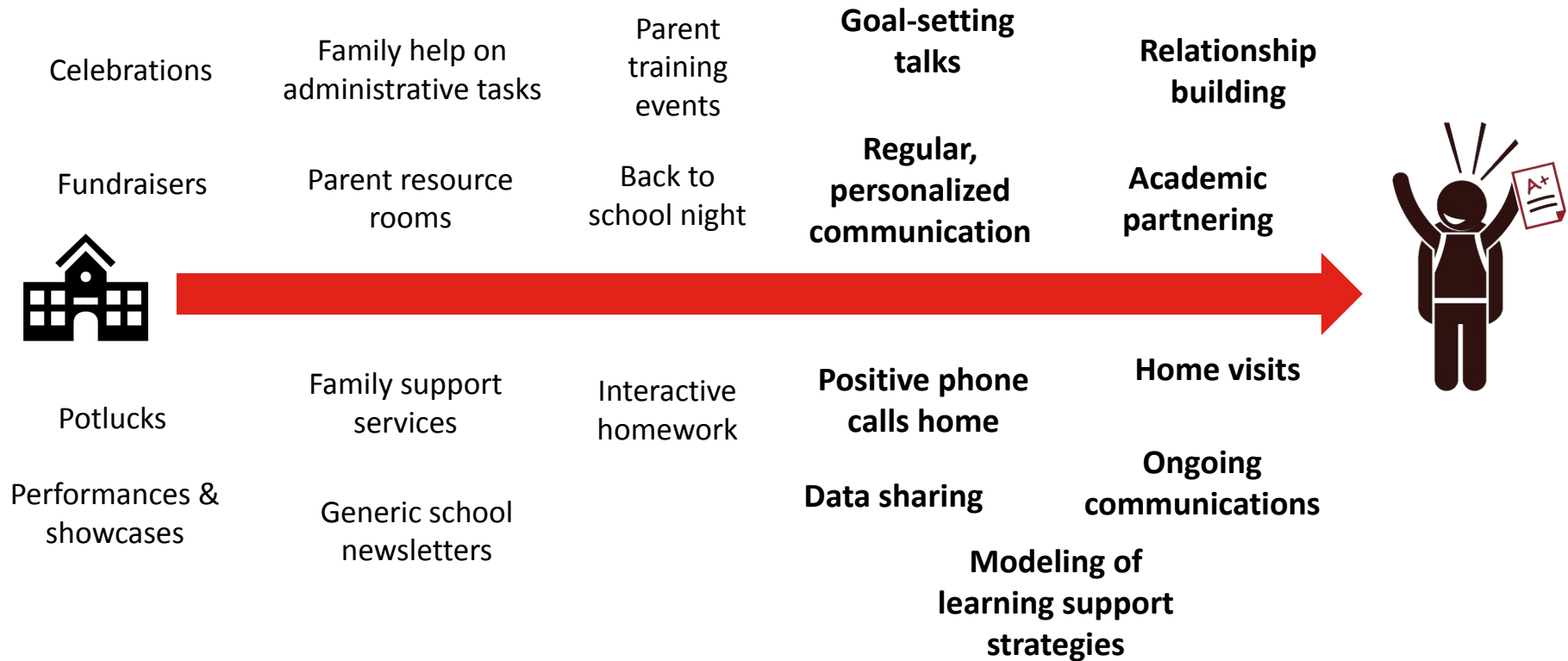
**GUIDE**  
THEIR CHILD'S EDUCATION



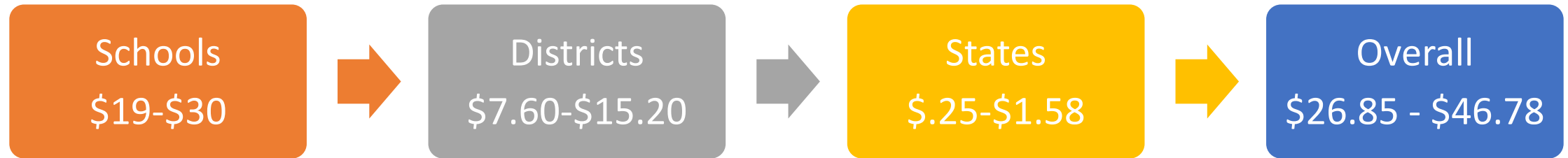
**ADVOCATE**  
FOR THEIR CHILD



# CONTINUUM OF IMPACT



# A Thrifty Improvement Strategy



- Figures suggest that in most places, the total cost for all three policy levels—school, district, and state—of between \$26.85 and \$46.78 per pupil per year will support the leaders and expenses for basic programs of family, school, and community partnerships, including:
  - FSCP activities/initiatives in schools’ UIPs.
  - Salaries, benefits, and program costs for district leaders at a ratio of 1 facilitator:30 schools.
  - Salaries, benefits, and program costs for state leaders.
- Dollar amounts adjusted for inflation in 2023.

# Alamosa's FSCP Journey

# FSCP Coffee Chat

## 11.17.23



# Who we are...

## Alamosa at a Glance



6

SCHOOLS



K-12

GRADES



37

EXTRACURRICULAR  
ACTIVITIES



136

TEACHERS



2200

STUDENTS



17

ATHLETIC TEAMS

## Alamosa Graduates Are



Future Ready



Confident



Resilient



Locally and  
Globally  
Connected



# We listened



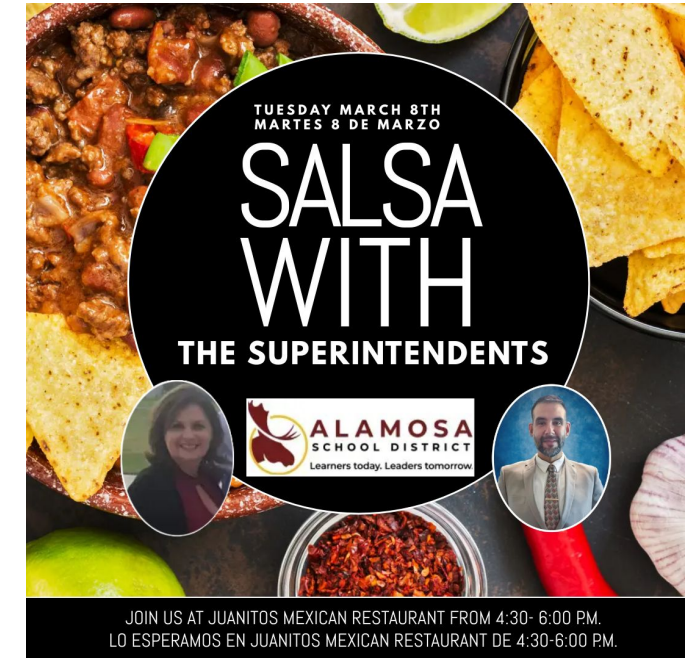


# We were present





# We listened some more





# CO-Creation





# Core Beliefs



Learners today.  
Leaders tomorrow.

## **CORE BELIEFS:**

*Alamosa School District...*

...understands that students' basic needs must be met before they can be expected to think, learn, and create deeply.

...has high expectations for each and every student.

...identifies, recognizes, and builds on the strengths of our students to ensure they grow through their skills.

...creates inclusive environments and celebrates the different cultures and heritages of our community.

## **VISION:**

Alamosa School District students grow academically, personally, and socially in partnership with their families and educators by learning and demonstrating resilience, confidence, global and social connection, and future ready skills.

## **MISSION:**

Alamosa School District provides safe, inclusive, challenging, and authentic learning experiences that prepare students to thrive in our community and beyond.

**ALAMOSA**  
SCHOOL DISTRICT

Learners today.  
Leaders tomorrow.



## Vision Statement

Alamosa School District students grow academically, personally, and socially in partnership with their families and educators by learning and demonstrating resilience, confidence, global and social connection, and future ready skills.



# Mission Statement

Alamosa School District provides safe, inclusive, challenging, and authentic learning experiences that prepare students to thrive in our community and beyond.



# ASD Strategic Plan

## FOCUS AREA ONE: High Quality, Student Centered Learning



### ***PRIORITY ONE: Students Demonstrate the Graduate Profile Skills***

Alamosa students access diverse learning opportunities, allowing them to apply graduate profile skills. Eventually, they will demonstrate the mastery of those skills through their senior capstone.

### ***PRIORITY TWO: Effective Teaching in Every Classroom***

Students in Alamosa Schools receive engaging instruction. Exploration into complex topics is supported by effective teaching. Understanding of content is achieved through a desire for knowledge.

### ***PRIORITY THREE: Job- Embedded Professional Development***

Alamosa educators receive professional development and support so they can consistently offer data-informed, individualized, and evidence-based instruction to students.

## FOCUS AREA TWO: Healthy Students and Staff



### ***PRIORITY ONE: Social Emotional Learning and Trauma Informed Care (SELTIC)***

Alamosa students learn in a safe, supportive, and collaborative culture. Systems of support are provided for their social, physical, emotional, and mental wellness.

### ***PRIORITY TWO: Staff Retention and Support***

Alamosa staff's social-emotional and mental health needs are supported by the district so they can thrive as leaders of learning.

## FOCUS AREA THREE: Family Partnership

### ***PRIORITY ONE: Family Partnership Strategies***

Families in the Alamosa School District have meaningful relationships with the educators. Communication between families and staff helps students achieve long-term success.

### ***PRIORITY TWO: Representative Parent and Family Leadership***

The representation of parent and family leadership roles in Alamosa Schools (school accountability committees, parent teacher associations, etc.) will mirror the demographics of the community it serves.





# CO-Production





# Alamosa Schools comes back to the neighborhood

by The Citizen    May 12, 2023



State Board of Ed to ASD: 'This team has done amazing things'

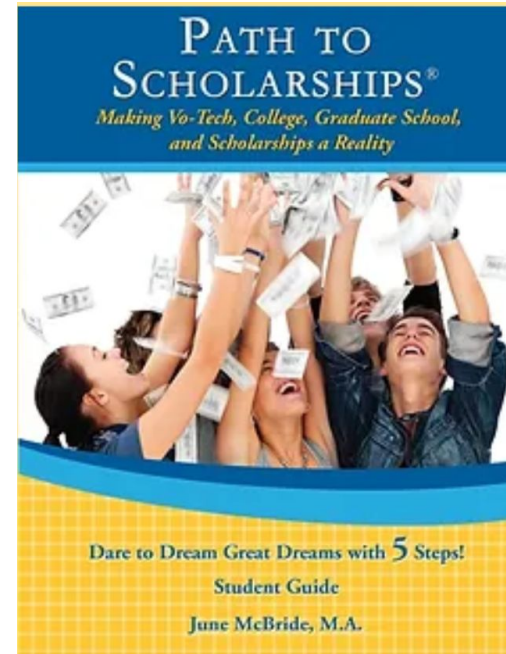


Photo by Luis Murillo Jamie Dominguez, founder of Shooting Stars Cultural and Leadership Center, addressing the State Board of Education, Commissioner of Education, ASD staff and visitors.



# CO-Production

- Voice Visits
- Interpretation Services
- Community Partnership Meeting
- Parent Academy



# Meet the Team

**Jamie Madigan**- District MTSS Coordinator

**Courtney Vigil**- District Family Engagement Coordinator

**Beth Quinlan**- Primary Parent Liaison

**Pedro Gonzalez-Ayala**- Secondary Parent Liaison



# Small Group Discussion

# Roles



Timekeeper



Notetaker – will share out with whole group



Facilitator – helps the group stay on track with each step

# Small Group Discussion



Reflect on what you heard from CDE and Alamosa.



Return to opening activity about your FSCP word (now and in the future) Is it the same?



What might need to be done differently in your district to help you get to your desired state?



# Reflection and Dialogue

The notetakers share with the whole group key takeaways and personal reflections on the small group's discussion. There is then time for whole group dialogue about strategies.





# Next Steps

1

Join a FSCP  
Collaborative  
Cohort.

2

Help promote the  
FSCP Principal  
Learning Cohort.

3

Attend the Annual  
FSCP District  
Leaders Retreat in  
May.

4

Peruse the free  
online FSCP  
courses.

5

Reach out to staff  
in the Office of  
FSCP any time!

# Thank you!



Office of Family, School, and Community Partnerships

Darcy Hutchins, Director  
[Hutchins\\_D@cde.state.co.us](mailto:Hutchins_D@cde.state.co.us)

Cheryl Cook, Special Projects  
[Cook\\_C@cde.state.co.us](mailto:Cook_C@cde.state.co.us)