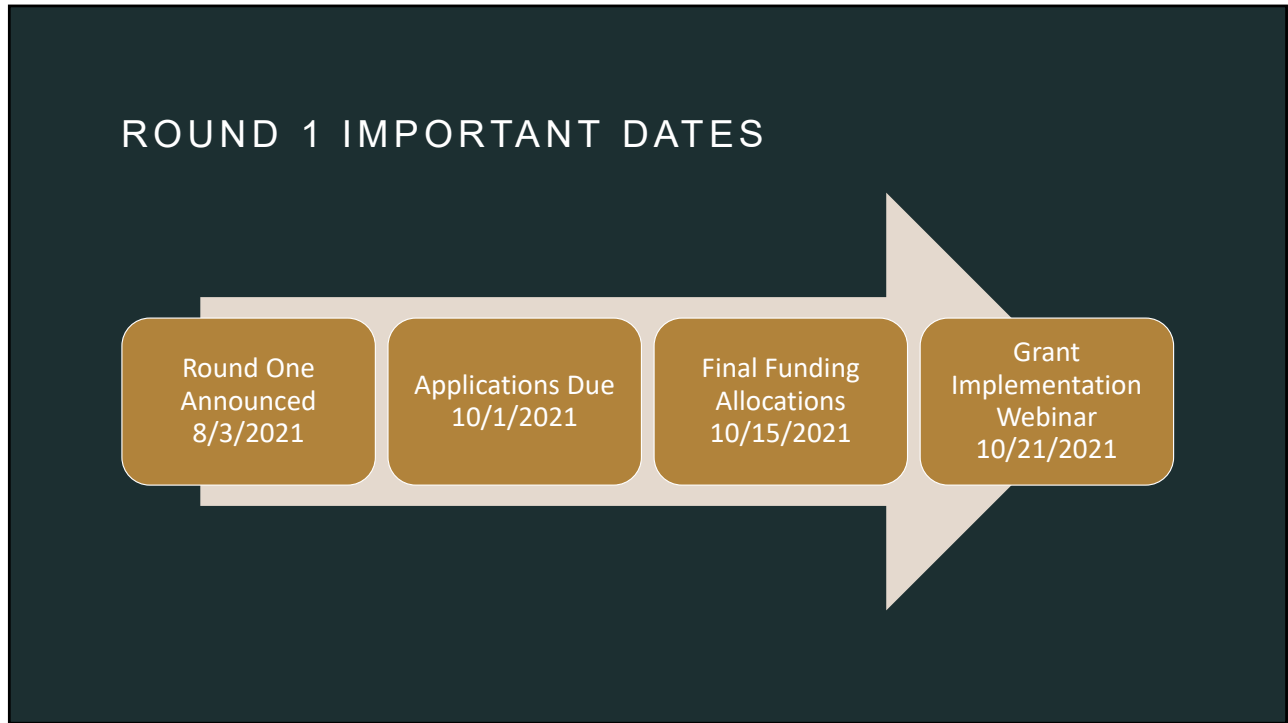





1



2



3



## GRANT INTENT

LSTA ARPA Grant funding is provided  
by the Institute of Museum and Library Services  
through the Colorado State Library  
to help communities respond directly and immediately to the  
pandemic,  
as well as to related economic and community needs  
through equitable approaches in digital inclusion and library services.

4

## FUNDING BASICS

- Federal Funds
- \$3,134,805 will be distributed
  - Round 1 \$2,100,356
  - Round 2 \$1,034,449
- Grant Funding Period: July 1, 2021 – September 30, 2022
- Reimbursement of expenditures only
- Must submit justification of expenditures (receipts, invoices, etc.)
- No match required
- Spend Quickly!
- No Supplanting



5

## WHO IS ELIGIBLE?

### School Libraries

- School district must be publicly funded and have at least one school library, which is defined as a dedicated facility located in and administered by the school that provides at least the following: an organized circulating collection, paid staff to oversee library collection, and an established schedule during which services of staff are available to students and faculty.
- School districts are the sole applicant on behalf of all school libraries in the district. One application per district.

6



## DUNS NUMBERS

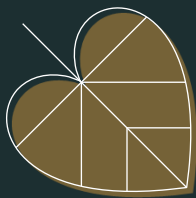
- Why do I need to include a DUNS number?
  - *Federal Funding Accountability and Transparency Act (FFATA)*
  - *The State Library must file a FFATA report for all awards > \$30,000*



7

## INDIRECT COSTS

- Indirect costs may be charged according to the following:
  - *Federally negotiated indirect cost rate (must provide documentation)*
  - *A rate negotiated between the Colorado State Library/ Colorado Department of Education and subrecipient*
  - *The minimum (de minimis) rate of 10% of a sub-recipient's direct costs.*



8



## ALLOWABLE EXPENDITURES

- Expenditures need to be in response to COVID-19 Pandemic
- Address the Digital Divide
- Technology- CIPA compliant
- Subscription service dates (databases, eBooks)
- Personnel costs - limited
- Digital educational resources for students (homework help)
- Self-checkout machines
- Touchless water fountains in the library



9

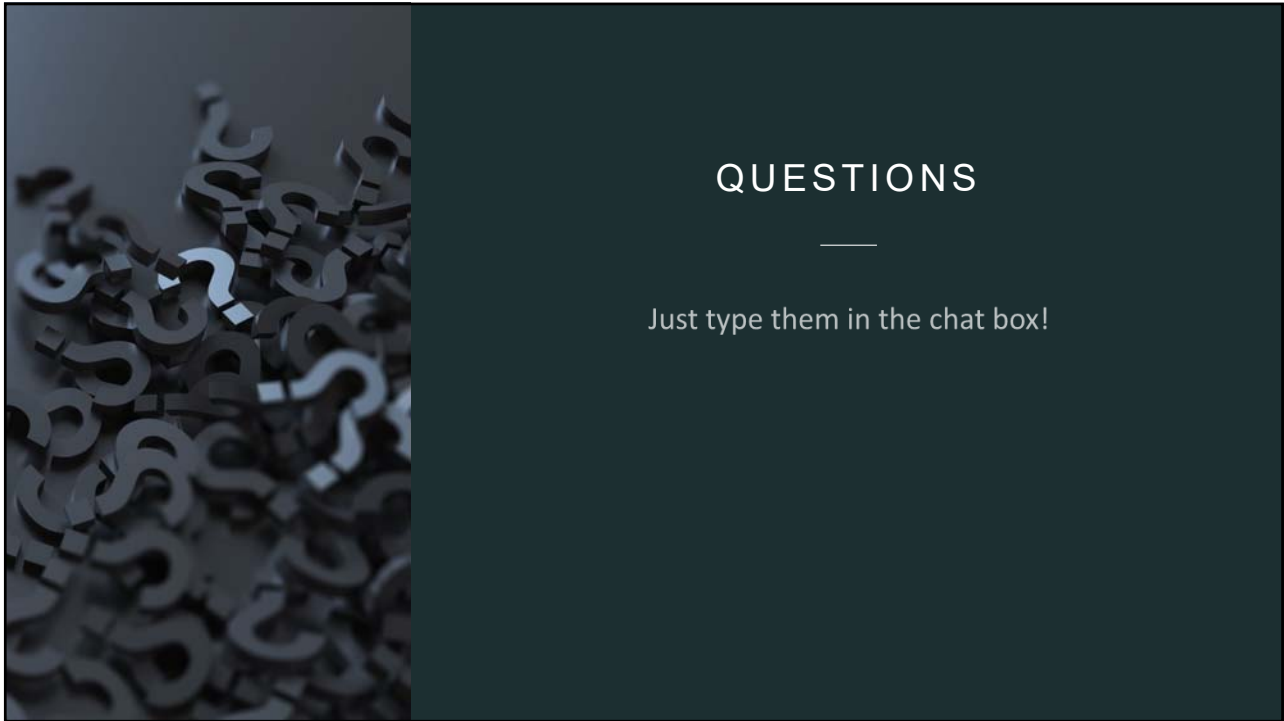


## NOT ALLOWABLE EXPENDITURES

- Supplanting
- Double dipping
- Focus should not be on professional development for librarians
- Construction
- Most installation costs especially if a professional is required (electrician, plumber, contractor, HVAC, etc.)



10



11