



COLORADO
Department of Education

Facility Insight



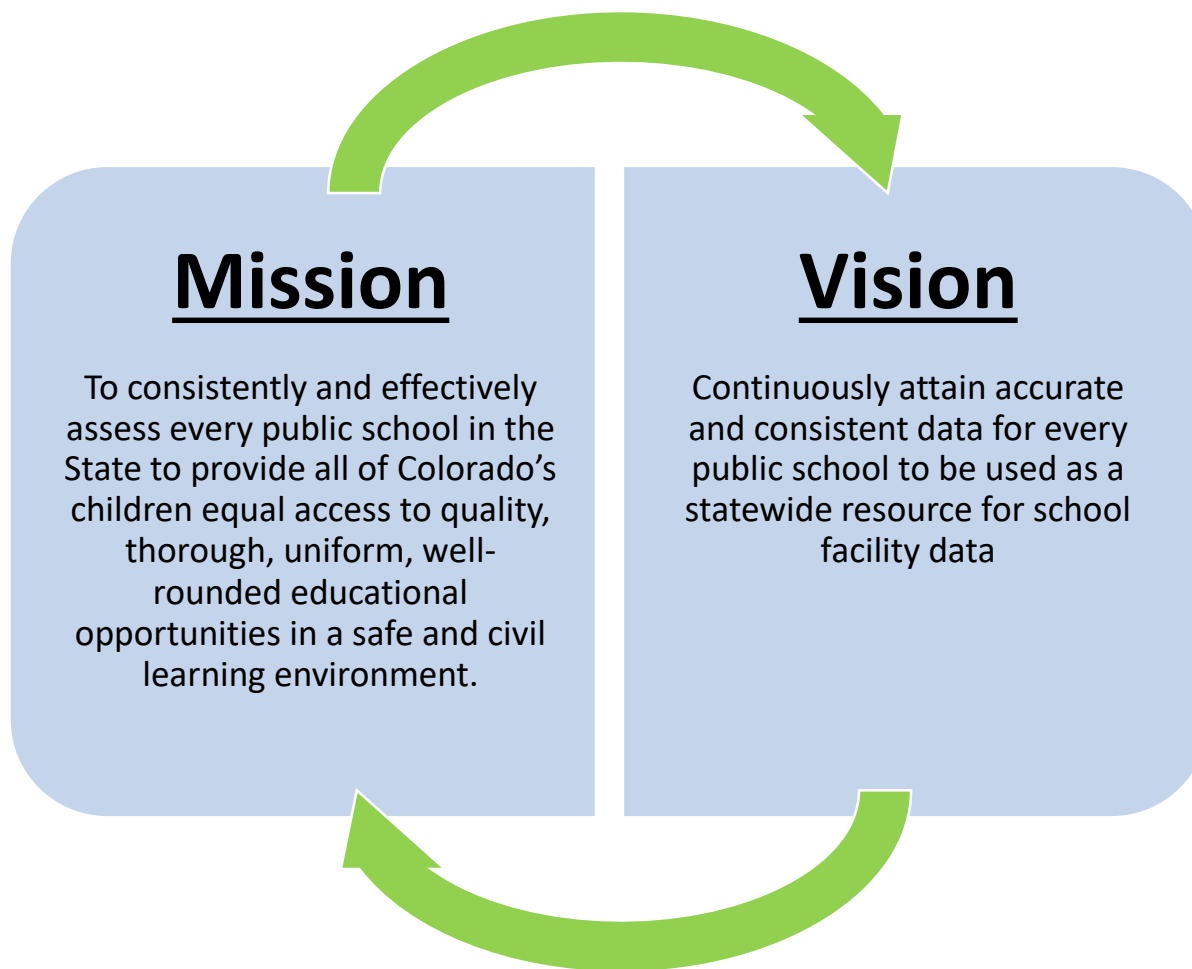
Building Excellent Schools Today
Facility Insight



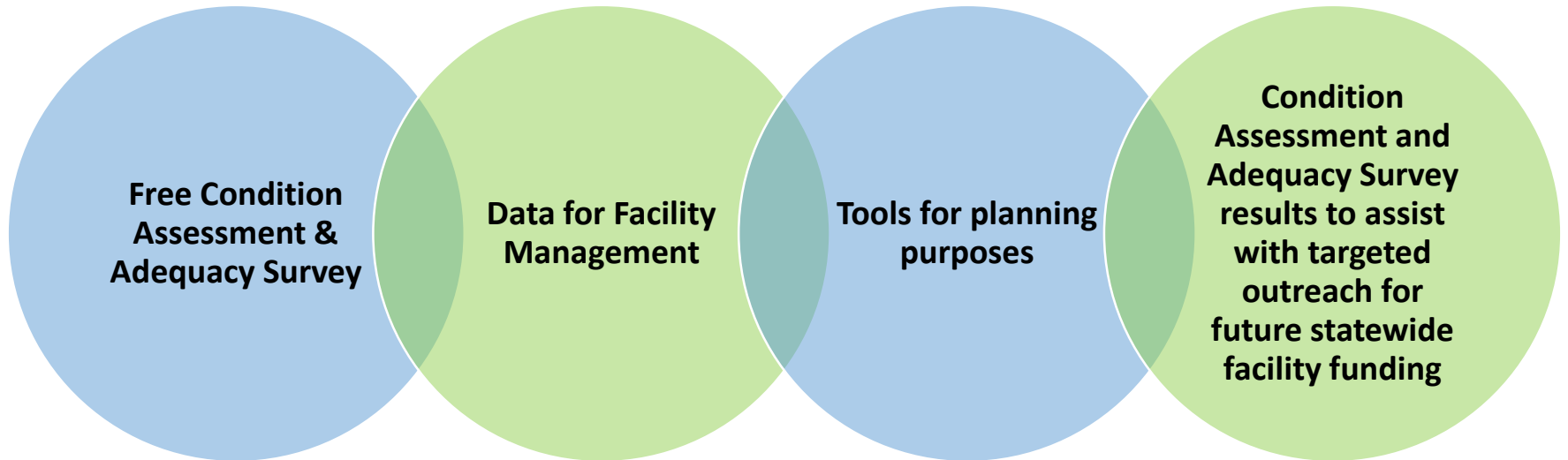
History

- FY2009-2010 Capital Construction Assistance Board (CCAB) was tasked with a Financial Assistance Priority Assessment of all Colorado public schools as part of the 2008 BEST Act
- FY2009-2010 ~13.9 billion identified in facility needs
- No assessments were conducted after the original assessment was completed in 2009
- FY2015-2016 The legislature authorized the Division of Capital Construction to hire in-house assessors under the Facility Insight Program and to continually assess schools throughout the state on a cyclical basis

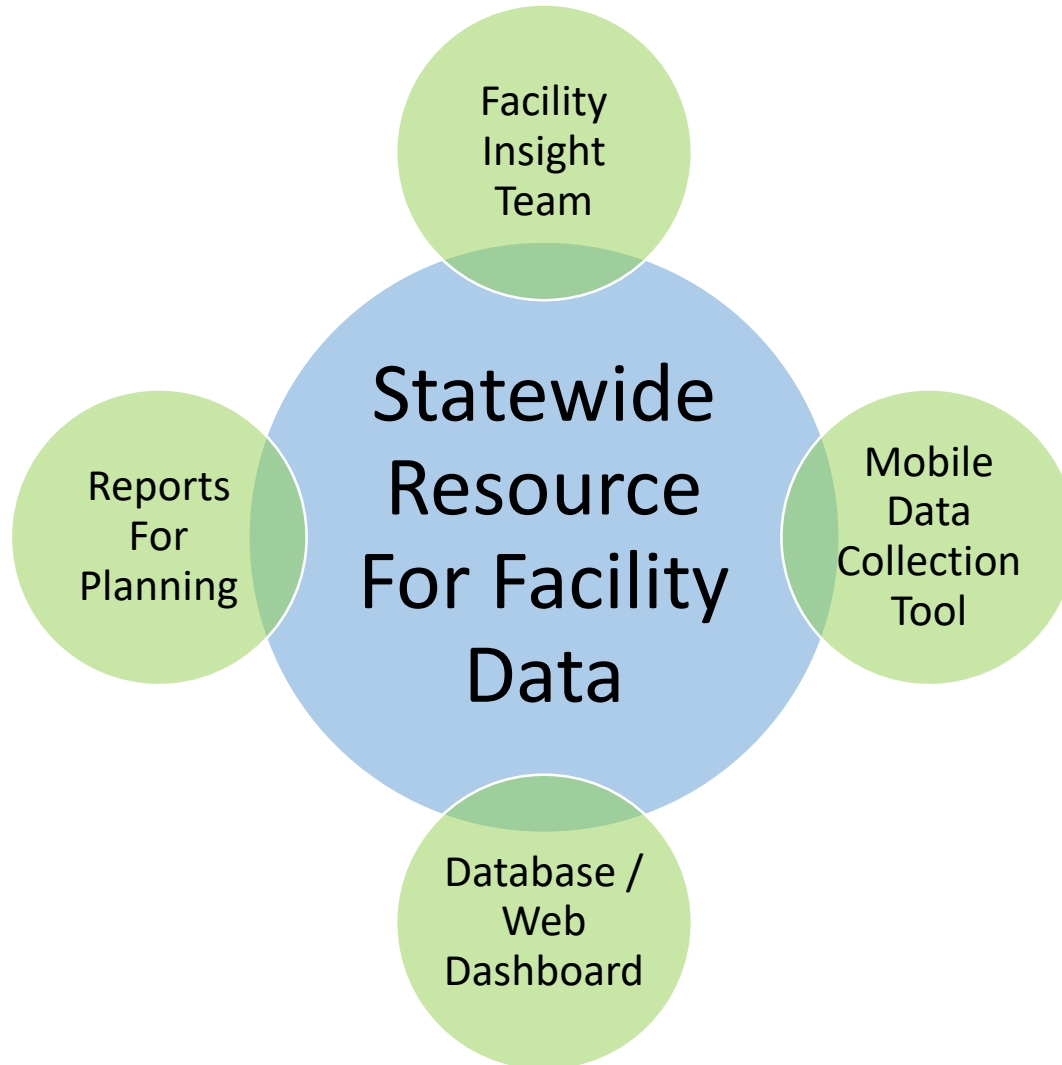
Goal



Public School Benefits



Framework for Success



Key Steps

Communication

- Division assessors are contacting schools to prepare them for assessment surveys and to schedule visits

Implementation

- Division assessors are visiting schools to complete assessments surveys

Result

- Data collected will be used by the state to make informed decisions on facility funding as well as schools for capital planning
- Summary data will be available through a public web portal

What to Expect

- Division assessors will contact schools at least 3 weeks in advance to schedule visits
- Requirements of schools will be sent in advance of site visit
- Division assessors will spend 2-3 days/school conducting surveys
- Report will be sent to the school and data published to the public web portal

What to Expect

Requirements of Schools:

- Point of contact
- Time to review adequacy questions
- Verification of assets
- List of capital projects
- Access to all areas of facility including roof
- Floor plans
- Notify building occupants
- Other reports/lists, i.e. roofing, engineering reports, etc.

Condition Assessment

Obtain Asset(Building) Information

- Descriptions, locations, area, floors, year constructed, year renovated, etc.

Obtain System Information

- Nonintrusive assessment of each building's major systems
 - Architectural, mechanical, and electrical
- What kind, how old, how much, condition, etc.

Determine Requirement Information

- The needs of the systems.

Adequacy Survey

The Adequacy survey was developed by a subcommittee of industry professionals and Division staff.

Consists of:

- Reviewing existing conditions
- Key items from the Division construction guidelines
- Evaluates items such as: egress, security, vehicle and pedestrian flow, etc.

Once each survey is completed, submitted, and approved, the software will score and weight each response resulting in an overall Adequacy score for the school.

Facility Insight Staff

Dustin Guerin

Supervisor, Facility Insight

303-866-6263

Guerin_D@cde.state.co.us

Priya Nye

Office Manager, Capital Construction

303-866-2153

Nye_P@cde.state.co.us

John Huerta

Regional Assessor – Central

Josh Jones

Regional Assessor - Central

Lucas Wade

Regional Assessor – Northwest

Marc Kimmett

Regional Assessor - Central

Mark Hillen

Regional Assessor – Southwest

Sean Donahue

Regional Assessor - Central

Steve Fagan

Regional Assessor – Northeast

Tim Cissell

Regional Assessor - Southeast

<http://www.cde.state.co.us/cdefinance/capconstassessment>

