

# Welcome Task Force Members & Guests

## A few notes prior to the meeting starting:

Task Force Members please have your camera on, audio muted, and relevant documents available at the beginning of the meeting.

- Welcome to the public who are watching the meeting via Live Streaming.
- If the public has any questions or comments regarding *transportation operations*, these can be sent via email to Susan Miller at [miller\\_s@cde.state.co.us](mailto:miller_s@cde.state.co.us)
- If the public has any questions or comments they can be sent via email to Jennifer Oakes at [Okes\\_J@cde.state.co.us](mailto:Okes_J@cde.state.co.us)

# SB 23-094 School Transportation Task Force



**September 30, 2024**

**Virtual Meeting**

# Overview of Today's Agenda

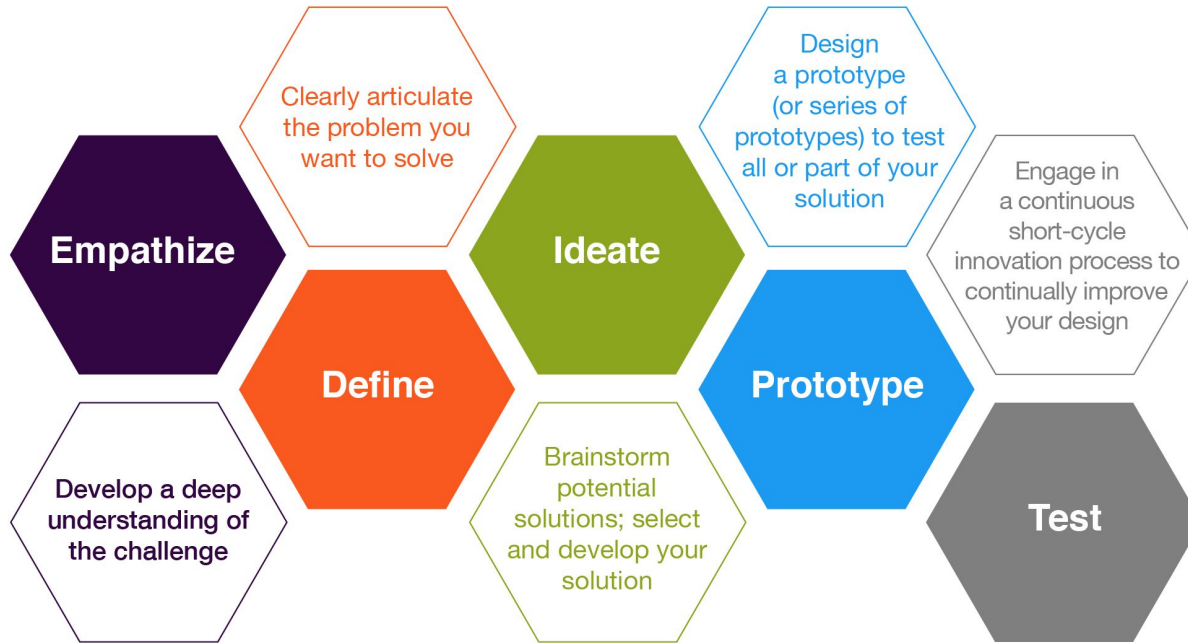
1. Agenda Item #1- Final Recommendations
2. Agenda Item #2- Access to School Choice
3. Agenda Item #3- Next Steps

# Guidelines for Interaction, Deliberation and Collaboration

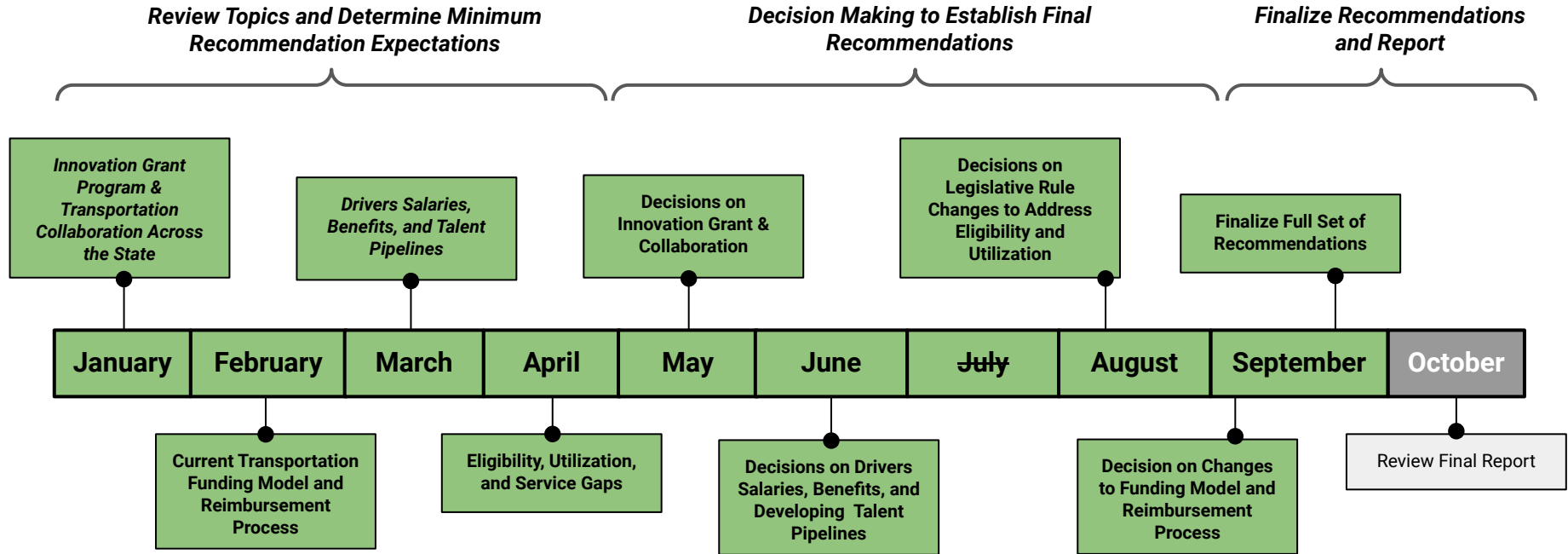
- Respect others
- Cameras on whenever possible
- High engagement from all members
- High level of trust with each other
- Assume positive intent
- Collaborate as a team to benefit our students
- Encourage open dialogue
- Respectful dialogue
- Enable every member to have a voice
- Consider other member's experience and knowledge
- Consider other member's viewpoints
- Avoid assumptions
- Avoid personal or professional motives
- Provide and review topics in advance
- Establish clear agendas and desired outcomes for each meeting
- Develop clear goals and objectives
- Keep the work task and outcome oriented
- Keep the interests of the task force and the needs of the students at the forefront of the work.
- Keep students at the center of the conversation

Key Norm Areas:  
*Decision Making Norm*  
*Equality of Process*  
*Conflict Resolution*

# Design Thinking



# Project Plan



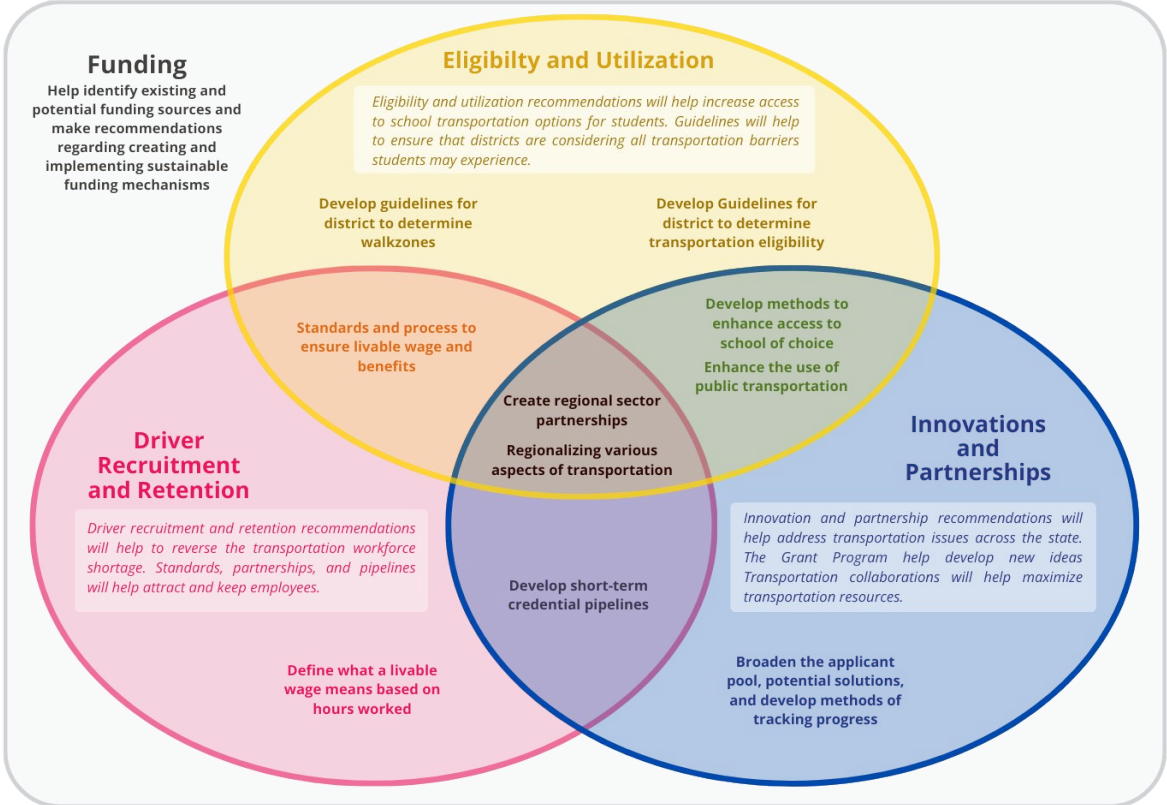
22-107-101 (2) THEREFORE, THE GENERAL ASSEMBLY DECLARES THAT IT IS IN THE BEST INTERESTS OF THE STATE TO DIRECT THE COMMISSIONER OF EDUCATION TO CONVENE THE COLORADO SCHOOL TRANSPORTATION MODERNIZATION TASK FORCE TO STUDY THE ISSUES FACING SCHOOL TRANSPORTATION SYSTEMS AND USE THE STUDY'S FINDINGS TO ***DEVELOP AND RECOMMEND POLICIES, LAWS, AND RULES TO IMPROVE PUBLIC SCHOOL TRANSPORTATION ACROSS THE STATE IN ORDER TO BETTER MEET STUDENT NEEDS AND ALLEVIATE BURDENS ON SCHOOL DISTRICTS.***

# Minimum Requirements Model



## GOAL

BETTER MEET STUDENT TRANSPORTATION NEEDS AND FOSTER EDUCATION EQUITY WHILE ALLEVIATING DISTRICT BURDEN





# **DRIVER RECRUITMENT AND RETENTION RECOMMENDATIONS**

**Recommendation 1: The state should fully support and invest in enhancing training, recruitment, and retention of ALL school transportation staff to help ensure success of the public school transportation reform proposed here.**

- A. *The state should support district efforts designed to increase staff pay and benefits.*
- B. *The state should support district efforts designed to eliminate barriers to the training of transportation staff. The state should support district efforts designed to recruit and retain staff in all facets of public school transportation.*
- C. *The state legislature should work with the Department of Education (CDE) and the Department of Motor Vehicle (CDMV) to review and update the current statutes.*

# Recommendation 2

**Recommendation 2: Districts should work towards providing competitive wages and affordable benefits to their transportation staff whenever possible.**

- A. *Districts should work towards providing regionally competitive wages within the industry to their transportation staff.*
- B. *Districts should work towards offering full-time hours to their transportation staff whenever possible.*
- C. *Districts should work towards finding more equitable methods for assigning extra routes/trips when available.*
- D. *Districts should work towards making benefits available to all transportation staff.*

# Recommendation 3

**Recommendation 3: Numerous current state initiatives that are working to develop sector partnerships and create short-term credential pipelines should incorporate the transportation sector.**

*A. The state should include the transportation sector in existing legislation.*

# **INNOVATION AND PARTNERSHIPS RECOMMENDATIONS**

# Recommendation 4

**Recommendation 4: The state should consider an ongoing Transportation Innovation Grant Program, similar to the one-time grant funding considered by House Bill 22-1395. The following changes to the original proposal should be considered.**

- A. *Efforts should be made to broaden the applicant pool.*
- B. *The selection process should be based on the identification of a significant community need.*
- C. *The selection process should be based on the long term vision and expected impact of the project.*
- D. *The selection process should not include any expectation of supplemental funding.*
- E. *Efforts should be made to make the process as simple, quick, and straightforward as possible.*
- F. *Metrics should be required in both the application and reporting components to help track impact.*
- G. *Feedback from stakeholders served by the grant as well as the grant recipients themselves should be required.*
- H. *The list of possible solutions, strategies, and services should be expanded.*

# Recommendation 5

**Recommendation 5: Collaborations between school districts and public transportation entities should be fostered and supported throughout the state.**

- A. *The state should work to expand the number and reach of school districts and public transit collaborations.*
- B. *The state should continue to reimburse districts for the cost for students utilizing public transportation.*
- C. *Whenever possible, the state should encourage public transportation entities to include schools within their routes.*

**Recommendation 6: State and/or regional transportation collaborations and partnerships should be investigated and developed to help address student need and district burden.**

- A. *Multi-stakeholder groups should be formed to discuss and investigate potential areas of collaboration and partnership.*
- B. *Feasibility studies should be conducted once focus areas are identified to help develop a plan for implementation.*



# **ELIGIBILITY AND UTILIZATION RECOMMENDATIONS**

# Recommendation 7

## **Recommendation 7: Districts should work towards making walk-zones as safe and accessible as possible for their students.**

- A. *Districts should be encouraged to utilize state and federal resources when developing, assessing, and adjusting walk-zones.*
- B. *The CDE should promote the above mentioned state and federal resources to districts and families across the state.*
- C. *The CDE should provide technical assistance to districts who are looking to utilize and apply for available resources.*
- D. *Districts should work to incorporate clear and comprehensive language into their communications that explain what safety standards are being utilized when developing, assessing, and adjusting walk-zones within the district.*

# Recommendation 8

**Recommendation 8: The state should support all districts across Colorado in the acquisition and utilization of routing and GPS software.**

- A. *The state should explore various cost effective options for districts to purchase and utilize routing and GPS software.*

**Recommendation 9: Districts should work towards increasing communication regarding available transportation with students and families within their district.**

- A. *Districts should work towards providing more specific information regarding transportation options to the families in their district.*
- B. *Districts should work towards utilizing a variety of resources and methods of communication to relay information to families.*

# FUNDING RECOMMENDATIONS

# Recommendation 10

**Recommendation 10: The state annually considers transportation funding as part of the categorical programs budget request. As the state reviews education funding, transportation must be addressed as it is a critical component to ensuring equitable educational opportunities to students across the state.**

- A. *The state should consider how transportation reimbursement percentages have decreased over time and make changes to increase percentages to at least the level that they were during FY2014-15.*

**Recommendation 11: Moving forward the state should utilize the Scenario Six (*Single-Factor*) reimbursement process developed by the subcommittee to the Financial Policies and Procedures Advisory Committee.**

- A. *The state should utilize the new process and include an additional \$10 Million allocation.*
- B. *The state should utilize the new process and calculate hold harmless amounts based on a three year rolling average of transportation costs.*
- C. *The state should utilize the new process and reevaluate the need for a hold harmless component every five years.*

# Recommendation 12

**Recommendation 12: The state should update current statute and related regulations to reflect the new transportation funding and reimbursement process.**

- A. *Current transportation statute and regulations will require edits to conform with the recommendations in this report.*





## Clarifying Questions

Is there content (*not specific wording*) that the recommendations are currently missing?

Is there content (*not specific wording*) that the recommendations do not convey as previously discussed?

Should the Transportation Task Force put forth the current list of recommendations to the Joint Budget Committee?

## Decision Needed

1. Recommendation Stated
2. Fist to Five Vote
3. Articulate Concerns\*
4. Discussion of Concerns\*
5. Restate Decision & Record Vote



No way. I don't support this decision and I am vetoing.

I have strong reservations but will support the decision and will not veto.

I am uncomfortable with the decision but can live with it.

This decision is okay with me.

I support this decision.

I strongly support this decision.

22-107-101 (2) THEREFORE, THE GENERAL ASSEMBLY DECLARES THAT IT IS IN THE BEST INTERESTS OF THE STATE TO DIRECT THE COMMISSIONER OF EDUCATION TO CONVENE THE COLORADO SCHOOL TRANSPORTATION MODERNIZATION TASK FORCE TO STUDY THE ISSUES FACING SCHOOL TRANSPORTATION SYSTEMS AND USE THE STUDY'S FINDINGS TO ***DEVELOP AND RECOMMEND POLICIES, LAWS, AND RULES TO IMPROVE PUBLIC SCHOOL TRANSPORTATION ACROSS THE STATE IN ORDER TO BETTER MEET STUDENT NEEDS AND ALLEVIATE BURDENS ON SCHOOL DISTRICTS.***

## 22-107-104 (2)(k) RECOMMENDATIONS FOR LEGISLATION OR RULES THAT MAY IMPROVE SCHOOL TRANSPORTATION, INCLUDING RECOMMENDATIONS FOR LEGISLATION OR RULES THAT DO NOT EXACERBATE THE MARGINALIZATION OF COMMUNITIES THROUGH SEPARATION WHILE PROTECTING PUBLIC FUNDS

### April-

- *Voted on minimum requirements of creating guidelines to assist districts in considering identified barriers to transportation including access to school of choice.*

### August-

- *Discussed various considerations and concerns and were moving towards a recommendation of having a future group tackle the issue in more detail.*
- *Discussed creating a value statement to accompany the recommendation but couldn't come to consensus on content.*

### September-

- *Developed draft recommendation with three components focused around state and district level goals.*

# Component A: Access to School Choice

- A. The state should work to improve transportation to all students and support initiatives that would make it easier for students to access their school choice.*
  - a. The state should help ensure that changes to transportation help address current financial and transportation limitations in districts across the state that currently hamper students' access to transportation to their school of choice.*
  - b. The state should work to change the current state statute to make it easier for districts and schools to work together to transport students to their school of choice.*
  - c. The state should support school districts in this work to help minimize local impact and maximize access for students.*

Do you approve of  
Component A?



**Please type your vote in the  
chat. If you choose to abstain  
from the vote, please indicate  
such in the chat.**

# Component B: Access to School Choice

*B. Districts should work towards providing transportation to all students to their school of choice, whether it is located within or outside the district boundaries.*

*a. Districts should work with neighboring districts to ensure that all students are able to access a high-quality education that works best for them.*

Do you approve of  
Component B?



**Please type your vote in the chat. If you choose to abstain from the vote, please indicate such in the chat.**



# Component C: Access to School Choice

C. The state could dedicate further time and resources to addressing how transportation changes can be made to help address Colorado students' access to school choice.

- a. Resources could be allocated to conduct further research into promising practices happening within Colorado and across the country regarding supporting transportation for students to access school of choice
- b. Resources could be allocated to analyze the immediate needs and potential long term impact of any changes to transportation that would help address access to school choice.
- c. Multi Stakeholder input could be collected to help answer several key logistical questions ahead of the development of a long term solution. Key questions could include but should not be limited to:
  - Who should be responsible for paying for transportation to choice schools?
  - Who should be responsible for providing transportation to choice schools?
  - Should there be limitations on how far a choice school can be from a student's home?
  - How should transportation within and potentially across districts be regulated?
  - How could transportation changes impact budgets and students within a district?
  - How should potential impacts to budgets and students within districts be handled?
  - How could changes be made to help ensure equity and sustainability for all stakeholders?

Do you approve of  
Component C?



**Please type your vote in the  
chat. If you choose to abstain  
from the vote, please indicate  
such in the chat.**

# Next Steps

## Review Final Report

TUESDAY October 8th @ 10AM

### Review and Finalize Final Report

- *AHEAD OF THE MEETING*
  - *Review Final Report*
  - *Email Kate and Susan questions or concerns regarding content*
- *DURING THE MEETING*
  - *Any issues will be discussed*

**Thank You!!**