

SPECIAL EDUCATION
TEMPORARY AUTHORIZATION

WHEN TO USE

TTE

SEE

TEI

Acronyms/ Definitions/ Limitations

- **TTE / SEE / TEI / MOD**: ALL ARE TIED TO **EMPLOYMENT**. You must be employed by an administrative unit (school district), BOCES, facility school or state operated program to be eligible
- **TTE**: Temporary Teacher Eligibility (*1 year approval, renewed annually with satisfactory progress, for a maximum of 3 years*)
- **SEE**: Special Educator Eligibility (*1 year approval, renewed annually with satisfactory progress, for a maximum of 3 years*)
- **TEI**: Temporary Educational Interpreter (*1 year approval, renewed annually with satisfactory progress, for a maximum of 3 years*)
- **MOD**: Modified TTE or SEE [*MOD does not apply to TEI*], (*1 year approval*)
- **PROGRESS**: Verification by your institution of higher education verifying that satisfactory progress has been made toward completion of your special education endorsement program, this documents proof of progress and must be submitted annually.

Acceptable CDE license for the TTE / SEE / TEI / MOD program is any license that is NOT

- 1, 3, 5 year Substitute Teacher License
- Emergency Authorization
- Career and Technical Authorization/Credential



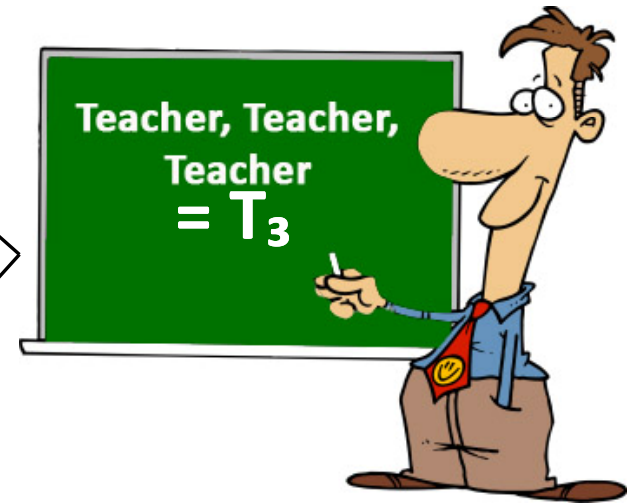
When to use TTE and not SEE?

SEE Example #1

- Sally Smith = SEE
 WHY *because she...*
- Holds PFTL in Elementary Education
- Employed as an Elementary SPED teacher
- Enrolled in SPED Generalist program at UCD

SEE Example #2

- Jason Day = SEE
 WHY *because he...*
- Holds PFTL in SPED Generalist
- Employed as a SPED Preschool Teacher
- Enrolled in UNC's ECSE program



= T₃ what does this mean?

1. This person holds a valid *teacher* (Educator) license with CDE
2. This person is employed as a *teacher*
3. This person is enrolled in a *teacher* special education endorsement program at an accredited institution of higher education

All three components equal: Teacher, Teacher, Teacher = T₃

***These examples reflect enrollment in approved special education endorsement programs at accredited institutions of higher education.*

When to use TTE and not SEE? *Cont.*

TTE Example #3

- Deb Martin = TTE
****WHY** because she...**
- Holds PFSL as a School Counselor
- Employed as a High School SPED Teacher
- Enrolled at Western State College in SPED Generalist program

TTE Example #4

- Jim Spears = TTE
****WHY** because he...**
- Holds a Principal License
- Employed as a Assistant Director of Special Education
- Enrolled in the Director of Special Education Program at UNC

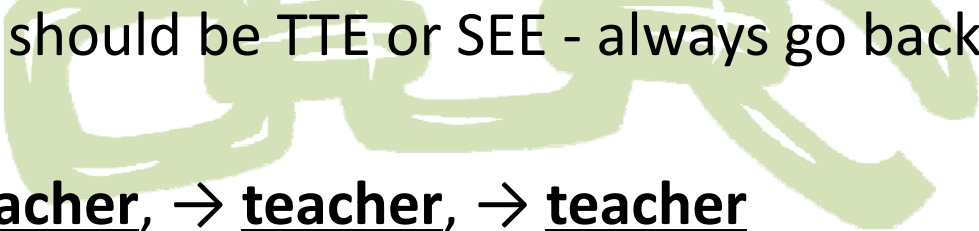
TTE Example #5

- Bob Jones = TTE
****WHY** because he...**
- Holds a INTL in Secondary Math
- Employed as a School Psychologist
- Enrolled in the School Psychology program at DU



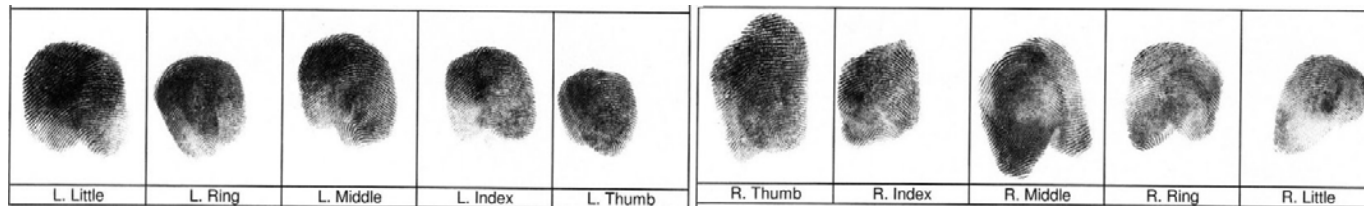
****These examples reflect enrollment in approved special education endorsement programs at accredited institutions of higher education.**

When to use TTE and not SEE?

- Not sure if should be TTE or SEE - always go back to the SEE “chain” of 
teacher, → teacher, → teacher
- If any links of the chain is broken → reverts to TTE

TTE: Temporary Teacher Eligibility

- TTE→ May hold Initial Teacher (Educator), Special Services, Principal or Administrator license or may not hold a license
 - **TTE:** Temporary Teacher Eligibility (*maximum 3 year approval*) renewed annually
 - You must be employed by an administrative unit (school district), BOCES, facility school or state operated program to be eligible
 - Completed by: Special education director, provider, and the college/university advisor
 - TTE is used for a Special Education Teacher, Special Service Provider, Special Education Administrator or Speech Language Pathology Assistant (SLPA)
 - If you have an existing license thru the Educator Licensing Unit you should not need Fingerprints & Background check
 - If you do not hold a valid license thru the Educator Licensing Unit, you will need Fingerprints & Background check as part of the Special Education Temporary Authorization (TTE) application.
 - TTE Application & Verification, 1st year
 - Subsequent 2nd or 3rd year Progress



SEE: Special Educator Eligibility

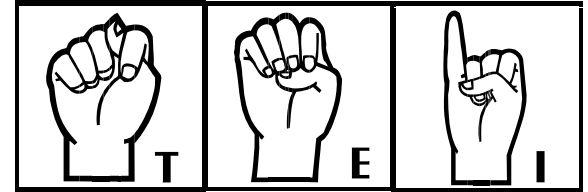
- SEE → MUST hold an Initial / Professional / Master Teacher (Educator) license
 - **SEE**: Special Educator Eligibility (*maximum 3 year approval*) renewed annually
 - SEE = **Teacher**, → **Teacher**, → **Teacher** = **T₃**
 - You must be employed by an administrative unit (school district), BOCES, facility school or state operated program to be eligible
 - Completed by: Special education director, provider, and the college/university advisor
 - **SEE is used exclusively for Special Education Teachers**
 - Already has Fingerprints & Background check
 - SEE Application & Verification, 1st year
 - Subsequent 2nd or 3rd year Progress

= **T₃** what does this mean?

1. Provider holds a valid **Teacher** (Educator) license with CDE
2. Provider is employed as a special education **Teacher** (K-12 or preschool)
3. Provider is enrolled in a special education **Teacher** licensure program at an accredited institution of higher education

All three components = Teacher, Teacher, Teacher = T₃

TEI: Temporary Educational Interpreter



- TEI → May or May Not hold a license
 - **TEI:** Temporary Educational Interpreter (*maximum 3 year approval*) renewed annually
 - You must be employed by an administrative unit (school district), BOCES, state facility school or state operated program to be eligible
 - Signature of BOTH the special education director and the educational interpreter required
 - A copy of the interpreter's AA or higher degree
 - EIPA Written (*Xerox copies of test results are acceptable*)
 - EIPA Performance with minimum 2.9 score (*Xerox copies of test results are acceptable*)
 - If you have an existing license thru the Educator Licensing Unit you should not need Fingerprints & Background check
 - TEI Application & Supporting Documentation, 1st year
 - Subsequent 2nd or 3rd year Application with documented progress

MOD: Modified SEE or TTE

- MOD → Holds an existing valid CDE license
 - **MOD:** Modified SEE or TTE is a 1 year approval
 - You must be employed by an administrative unit (school district), BOCES, facility school or state operated program to be eligible
 - Special education licensure program has been completed
 - Needs only passing score on PLACE/PRAXIS, or other required exam to qualify for Colorado licensure/endorsement
 - SEE or TTE Application Addendum with “MOD” written across the top
 - Upload a copy of college transcripts with your degree conferred
 - Upload copy of your PLACE/PRAXIS, or other required exam registration

Where did TTE come from?

in

ECEA Rules

Rules (for the) Administration of the
Exceptional Children's
Educational Act
1 CCR 301-8

3.04(2) - Temporary Teacher Eligibility
(TTE)

3.04(2) - Temporary Teacher Eligibility (TTE)

3.04 (2) If an administrative unit or facility school is unable to employ an individual who is appropriately certificated/licensed and endorsed, the director of special education may apply to the Department of Education for temporary teacher eligibility. Approval shall be effective for five school years for TTEs issued through the 1998-99 school year, and beginning with 1999-2000, shall be effective for three school years. Temporary teacher eligibility is nonrenewable and subject to the following conditions:

3.04 (2) (a) The individual shall possess a Colorado certificate or educator's license

3.04 (2) (b) The director of special education shall certify that, after reasonable efforts to hire an acceptable, appropriately endorsed individual, none could be found. Documentation of the search which was made to find an acceptable, appropriately endorsed individual shall be maintained by the administrative unit or facility school.

3.04(2) - Temporary Teacher Eligibility (TTE) *cont.*

- 3.04 (2) (c)** No later than 90 days after employment, the administrative unit or facility school shall provide to the Department of Education documentation of the individual's application to a program leading to endorsement in the area of request.
- 3.04 (2) (d)** At least annually, the administrative unit or facility school shall secure evidence of satisfactory progress toward completion of the endorsement program within the specified time allowed.
- 3.04 (2) (e)** If extenuating circumstances prevent the individual from meeting the requirements of Sections 3.04(2)(a) through 3.04(2)(d), the circumstances must be documented by the director of special education and submitted to the Department of Education for consideration before any decision to revoke the TTE is made.
- 3.04 (2) (f)** Application for a second temporary teacher eligibility will not be approved for the same person unless the endorsement program referenced in the request for the first TTE has been completed, or both endorsement programs could be completed within the same period specified in the initial request.

3.04(2) - Temporary Teacher Eligibility (TTE) *cont.*

- 3.04 (2) (f)** Application for a second temporary teacher eligibility will not be approved for the same person unless the endorsement program referenced in the request for the first TTE has been completed, or both endorsement programs could be completed within the same period specified in the initial request.

- 3.04 (2) (g)** Temporary teacher eligibility is issued to the administrative unit or facility school for the individual. Before a TTE will be transferred for an individual by the Department of Education from one unit or facility school to another, the second unit or facility school shall submit to the Department of Education verification that satisfactory progress was made toward the required endorsement during the last school year the individual was employed on the basis of a TTE.

- 3.04 (2) (h)** If an individual only needs recent credit and/or successful completion of the basic skills or content area examinations to qualify for the appropriate Colorado educator's license and endorsement, the administrative unit or facility school shall apply for both an emergency authorization and a TTE. Verification of enrollment in an appropriate university program is not required, but the Department of Education will only approve a TTE for one school year.

Still Confused...????

Contact:

Program Content and Requirements

Lauren Rossini (303) 866-6688

rossini_l@cde.state.co.us

General Inquiries and Forms

Liz Macek (303) 866-6736

macek_e@cde.state.co.us

