

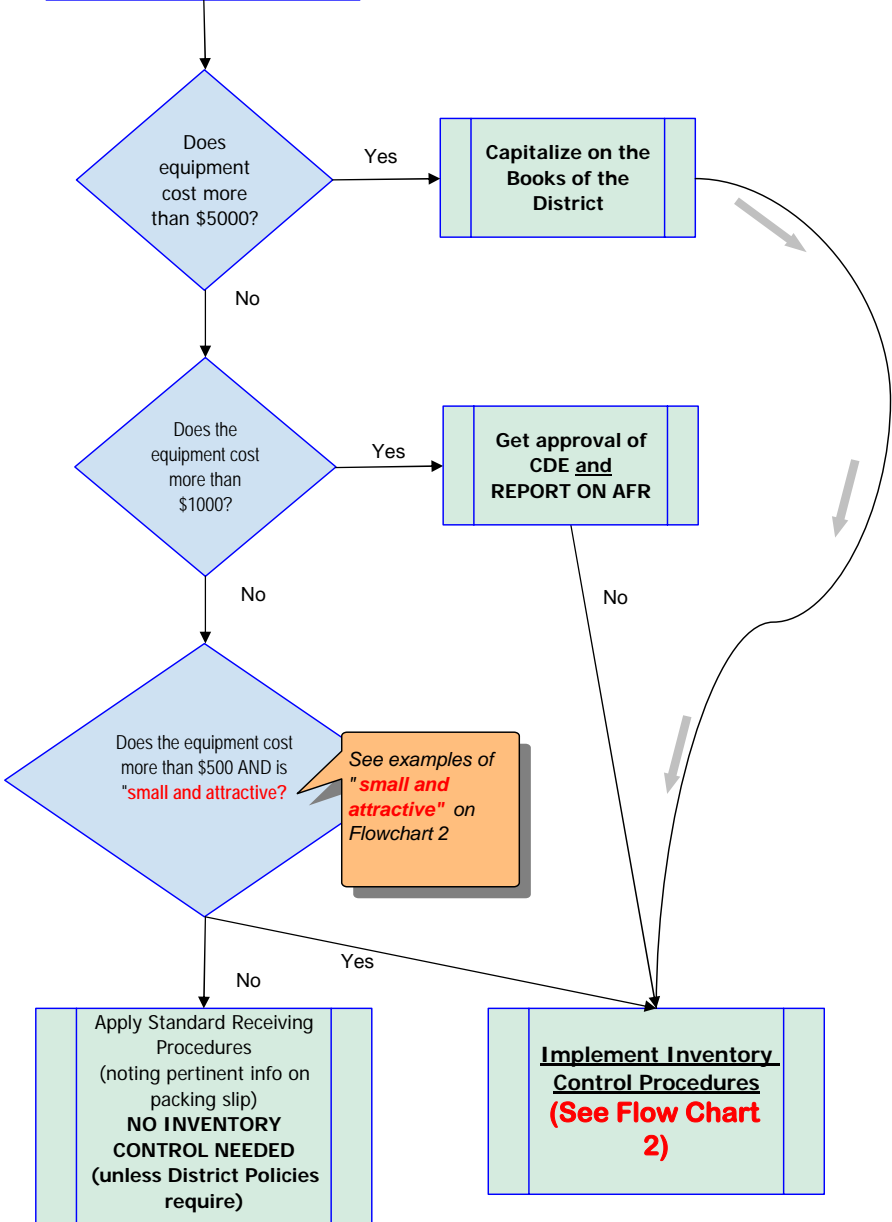
Flowchart #1 District Equipment Purchases with GRANT Funds

Purchase of Equipment Initiated and Approved at the District Level

STATE PURCHASING RULES APPLY UNLESS DISTRICT RULES ARE MORE RESTRICTIVE.

STATE RULES:

1. Asset costing more than \$5,000 must be capitalized.
2. Documented Quote is needed to purchase goods costing more than \$10,000. A Request for Proposal (RFP) is used when factors other than price must be considered in order to determine which offer would best meet the district's needs.



See examples of "small and attractive" on Flowchart 2