

NAEP Data Explorer

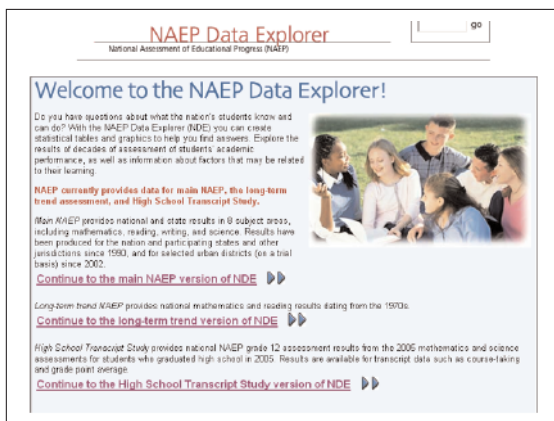
What is it?

The **NAEP Data Explorer** (NDE) allows users to create custom statistical tables and graphics using data from past NAEP tests. It is a rich and dynamic database of all NAEP data.

What can I do?

The NAEP Data Explorer has three different versions, each allowing you to perform sophisticated searches and comparisons of data:

- **Main NAEP Version** contains data for eight different subject areas since 1990, and selected urban districts since 2002.
- **Long-Term Trend Version** has data for national mathematics and reading results from the 1970s.
- **High School Transcript Study Version** provides data for grade 12 assessment results from the 2005 math and science assessments for high school students who graduated in 2005.



How do I access it?

1. Go to <http://nces.ed.gov/nationsreportcard/naepdata>.
2. Or, click **Analyze Data** on the NAEP home page at <http://nces.ed.gov/nationsreportcard/>.

How do I use it?

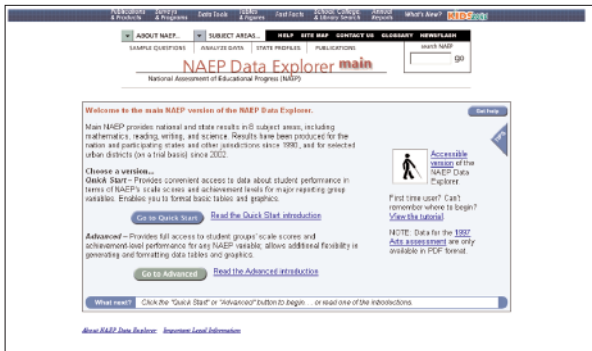
Click the version of NDE you want: the main version, the long-term trend version, or the High School Transcript Study version. The NDE operates in the same way for each of these, so the tutorial can help first-time users. After clicking on which version you want, click “View the Tutorial.”

The Main Version of the NAEP Data Explorer


Main NDE has two modes: Quick Start and Advanced.

- Use Quick Start if you are interested in accessing data about students' performance for major reporting group variables (such as comparing states, genders, ethnicities, etc.) and presenting that information in basic tables and graphics.
- Use Advanced mode if you also want to access thousands of variables, cross-tabulate multiple variables in n-way tables, and/or conduct regression analyses. You also have the option of combining multiple states and/or jurisdictions into a single “new” jurisdiction.

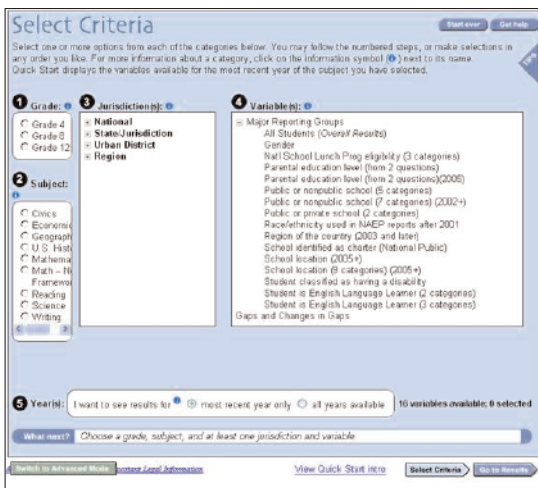
You can get started on either by clicking “Go to Quick Start” or “Go to Advanced,” or by reading one of the introductions. You will need to click to accept the terms of the NCES Data Usage Agreement that pops up.



Quick Start

Using the NAEP Data Explorer is easy. You may click the  if you are unsure of what something means.

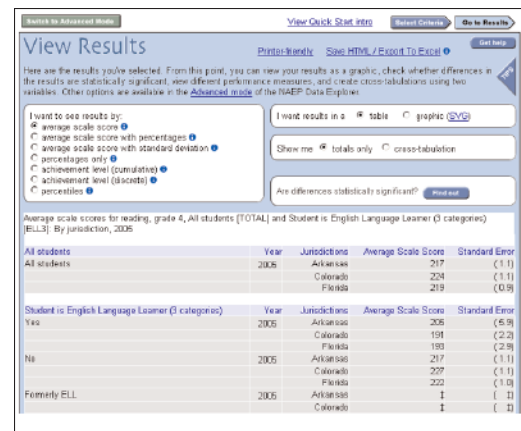
1. First, select your criteria:
 - a. Grade
 - b. Subject
 - c. Jurisdiction(s)
 - d. Variable(s)
 - e. Year(s)
2. Click “Go to Results”



View Results Screen

You may view and manipulate your results in several ways:

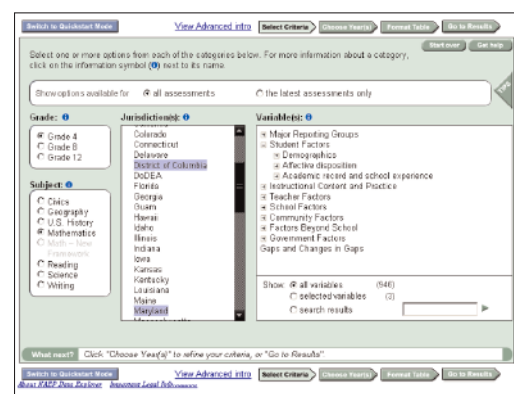
1. You can see your results by average scale scores, achievement levels, or percentiles.
2. The NDE tool also lets you view your results as a graphic instead of a table.
3. You may need to download SVG Viewer; the NDE tool will prompt you to do this if you need it.
4. You may cross-tabulate variables.



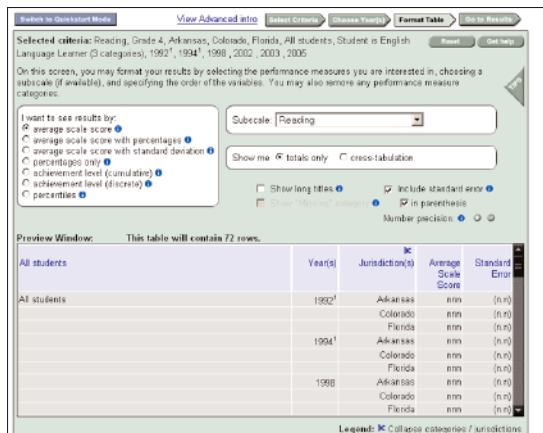
Advanced Mode

You can do all of the same things in Advanced Mode that you can in the Quick Start Mode, but there are also added features:

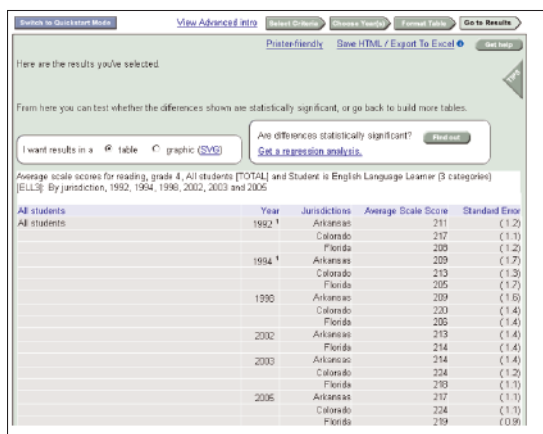
1. Vastly more variables to include in your data searches, such as student factors, teacher factors, instructional content and practice, school factors, community factors, factors beyond school, and government factors.



2. The ability to format your table, modifying how data will be viewed, including changing performance measure, cross-tabulating results, and choosing among subscales that are available for most subjects. Click “Format Table” to utilize this feature.



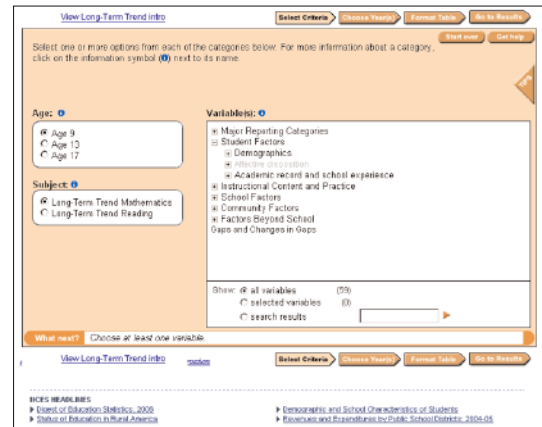
3. Regression Analysis. To use this, click “Go to Results” and check “Regression Analysis.”
 4. The capability to export your table as HTML or an Excel file. Click “Save HTML/Export to Excel.”



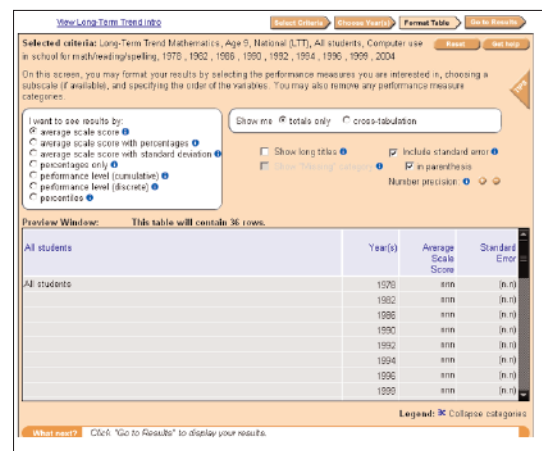
Long-Term Trend Version

The Long-Term Trend Version of NDE provides the ability to create data tables based on results from long-term NAEP data collected since the 1970s. To begin, simply click “Go to Long Term Trend.” Alternately, you can click on “Read the LTT Introduction” for added support.

1. First, select from the following criteria:
 a. Age
 b. Subject (Math or Reading)
 c. Variable(s)



2. Then, click on “Choose Year(s)” to refine your results.
 3. Click “Format Table” after you have selected the years for which you want results. You may then format your results by totals or cross-tabulation, and view it in a variety of ways, including average scale score and percentiles.

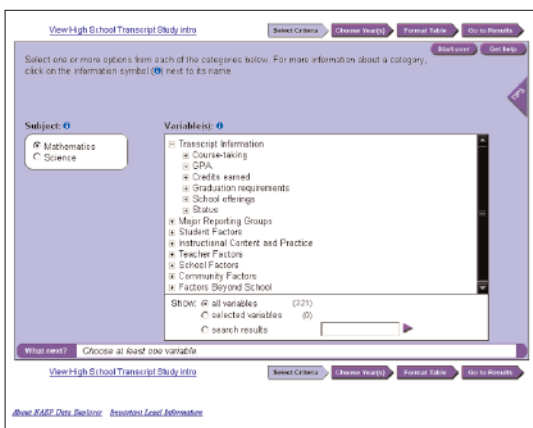


4. If you are ready to view your results, click “Go to Results.” If you are not satisfied with the data presented, click “Reset” to go back.

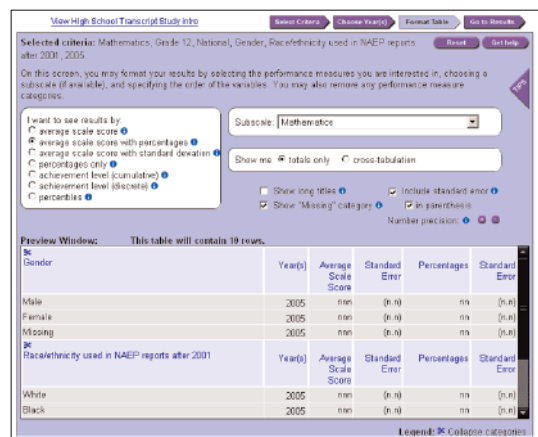
You may view your results in a table or as a graphic, as well as check for statistical significance. You can also export your data as HTML or an Excel file.


High School Transcript Study Version

1. To get started, click “Go to High School Transcript Study.”
2. Select the subject you want, and any of the variables you would like to see results for.



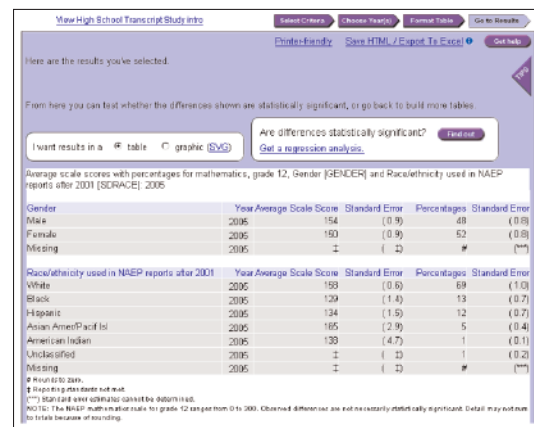
3. Click “Choose Year(s)” to select the available years you want information for.
4. Click “Format Table” after you have selected the years for which you want results. You may then format your results by totals or cross-tabulation, and view it in a variety of ways, including average scale score and percentiles. If you have questions



about what any category means, click the  button next to the phrase.

5. If you are ready to view your results, click “Go to Results.” If you are not satisfied with the data presented, click “Reset” to go back.

You may then view your results as a table or a graphic, check for statistical significance, save as HTML, export to Excel, or perform a regression analysis.



For extra help, click the triangle for TIPS on the particular page on which you are making selections.

Additional Help

1. For additional support with the NAEP Data Explorer, click “Get help.”
2. If you have questions or comments, submit them by clicking **CONTACT US**.

The National Assessment of Educational Progress (NAEP) is the only nationally representative and continuing assessment of what America’s students know and can do in various subject areas. Assessments are conducted periodically in mathematics, reading, science, writing, the arts, civics, economics, geography, and U.S. history. For the most recent results of assessments, visit The Nation’s Report Card website (<http://nationsreportcard.gov>). To see NAEP data, information about the NAEP program, and a schedule of future and past assessments and studies, explore this website (<http://nces.ed.gov/nationsreportcard>).