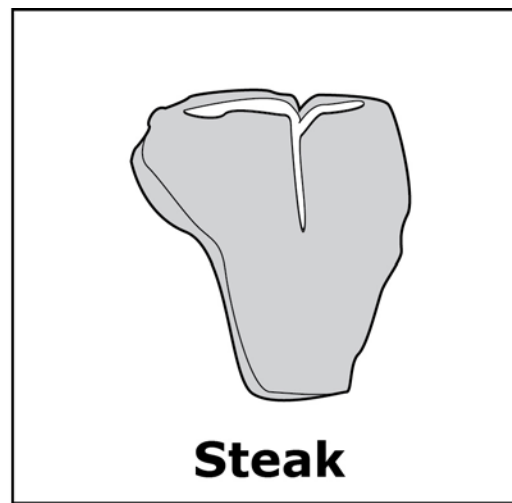
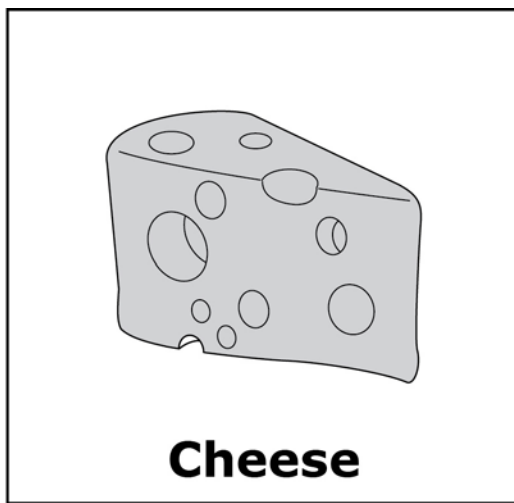
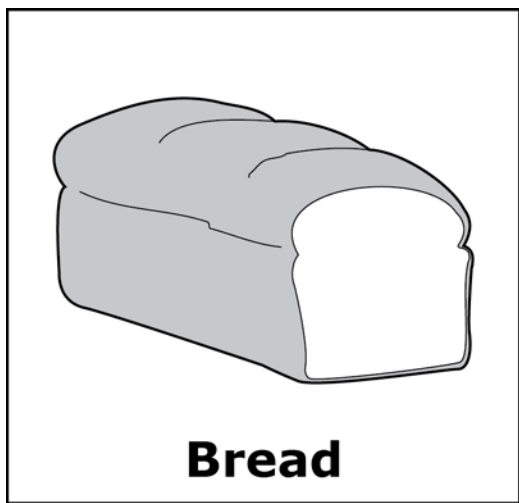


**Item 00:**

<p>Present the primary prompt to the student. Read the following prompt exactly as it appears below.</p> <p>Primary Prompt:</p> <p><b>The human body receives nutrients from food. Which type of food is a good source of carbohydrates?</b></p> <p>Point to and read each answer option aloud:</p> <p><b>Bread, Cheese, Steak</b></p> <p><b>Choose your answer.</b></p> <p>The student receives a score of 4 for a correct response.</p> <p>If the student does not respond, repeat the primary prompt and answer options <i>only once</i>, exactly as they appear.</p> <p>If the student responds correctly after the second presentation of the primary prompt, the student receives a score of 4.</p> <p>If the student responds incorrectly or does not respond after the repeating the primary prompt, move to Level 3.</p>	<b>4</b>
<p>Turn the page and present the additional prompt to the student.</p> <p>Present the primary prompt and answer options again, exactly as they appear above.</p> <p>The student receives a score of 3 for a correct response.</p> <p>If the student does not respond or responds incorrectly, move to Level 2.</p>	<b>3</b>
<p>Point to the correct answer and read aloud:</p> <p><b>Bread is a good source of carbohydrates.</b></p> <p>Present the primary prompt and answer options again, exactly as they appear above.</p> <p>The student receives a score of 2 for a correct response.</p> <p>If the student does not respond or responds incorrectly, move to Level 1.</p>	<b>2</b>
<p>If the student responds incorrectly at Level 2, the student receives a score of 1.</p>	<b>1</b>
<p>If the student does not respond at Level 2, the student receives a score of no response (NR).</p>	<b>NR</b>

**Correct answer:** Bread

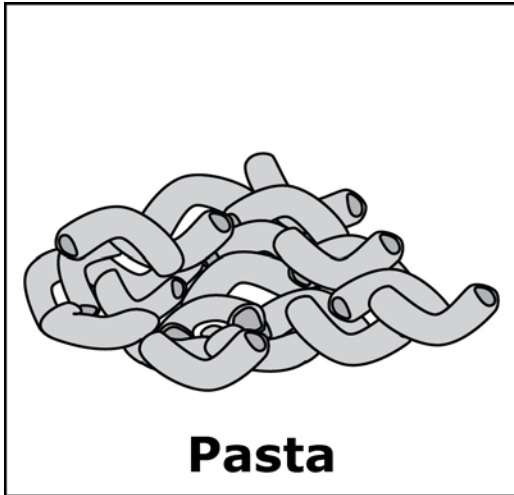


Present the additional prompt to the student. Point to the answer on the student-facing page and read the additional prompt exactly as it appears below.

Additional Prompt:

**This is an example. A food that is a good source of carbohydrates is pasta.**

Turn back and present the primary prompt and answer options again, exactly as they appear on the previous page.



**Pasta**