

Colorado Project AWARE Grant

Advancing Wellness And Resilience in Education



COLORADO
Department of Education

Health and Wellness Unit

OVERVIEW

Colorado's Project AWARE aims to build a comprehensive, coordinated and integrated school behavioral health services system. To support communities and schools to increase access to school- and community-based mental health services, Project AWARE increases collaboration between state, local and building-level stakeholders to increase coordination of state and local policy, improve systems integration, strengthen cross-organizational resources and ensure sustainability of programs and funding.

The model is based on an MTSS behavioral health framework. Behavioral health promotion is a significant component of the project, therefore, CDE has partnered with Colorado Department of Human Services, Office of Behavioral Health (OBH) to promote and strengthen behavioral health and prevention systems. The Health and Wellness Unit also manages the School Health Professional Grant (SHPG) which includes 68 LEAs grantees working to increase the presence of school health professional who address youth behavioral health need. Project AWARE will capitalize on collaborations and align efforts with behavioral health stakeholders across the state to improve mental health awareness and response. In addition to broader, statewide activities, Project AWARE has partnered with four local education agencies (LEAs) to build district infrastructure and capacity and support best practices to inform Colorado schools and communities interested in accomplishing similar goals.



FUNDING/CONTEXT

As a former grantee of project AWARE (2014 - 2019) The Substance Abuse and Mental Health Services Administration (SAMHSA) continues to award funding to state and local education agencies to expand the capacity for mental and behavioral supports nationwide.

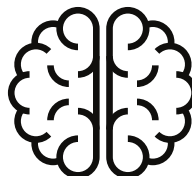
GOALS



Enhance the current state infrastructure for a coordinated, culturally-responsive approach to meet the behavioral health needs of students, families, and communities.



Increase the implementation of efforts within selected LEAs to improve or expand upon evidence-based behavioral health programs, services, and interventions for school-aged youth and families.



Increase capacity of LEAs through building behavioral health awareness and literacy of those who support school-aged youth and families to recognize behavioral health needs and connect them to appropriate services.

LOCAL EDUCATION AGENCIES (LEAs)

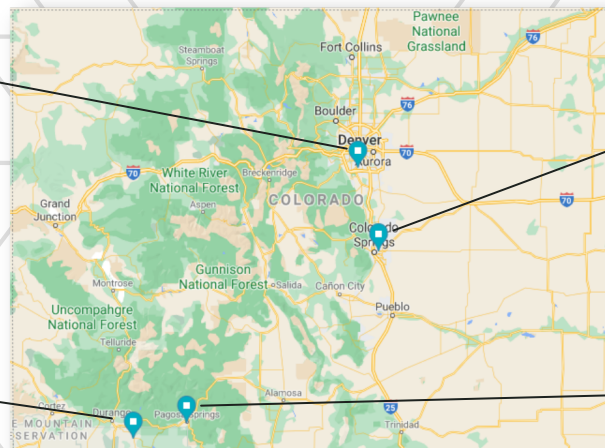
**LITTLETON
PUBLIC
SCHOOLS**

Arapahoe County
Metro
Suburban
~15,000 Students



**IGNACIO
SCHOOL DISTRICT 11-JT**

La Plata County
Southwest
Rural
~700 Students



El Paso County
Central
Urban
~26,000 Students



Archuleta County
Southwest
Rural
~2,000 Students



CONTACT US

cde.state.co.us/healthandwellness/projectaware

Morgan Seiler, Ed.S.

Program Coordinator

seiler_m@cde.state.co.us

720-501-8349

Kyle Pacqué, M.A.

Co-Coordinator, CDHS-OBH

kyle.pacque@state.co.us

Mario Rivera, M.S.

Program Evaluator

rivera_m@cde.state.co.us

Phyllis Reed, M.Ed.

Assistant Director of Health and Wellness

reed_p@cde.state.co.us



Advancing Wellness and Resilience in Education



COLORADO

Department of Education

Project AWARE, Office of Health and Wellness
Colorado Department of Education
201 E Colfax Avenue, Room 300
Denver, CO 80203