



COLORADO

Department of Education

Assessment Work Group

Colorado Department of Education

April 27, 2017

Goals

- Clarify charge from the SBOE
- Review potential additions to the menu:
- Develop recommendations

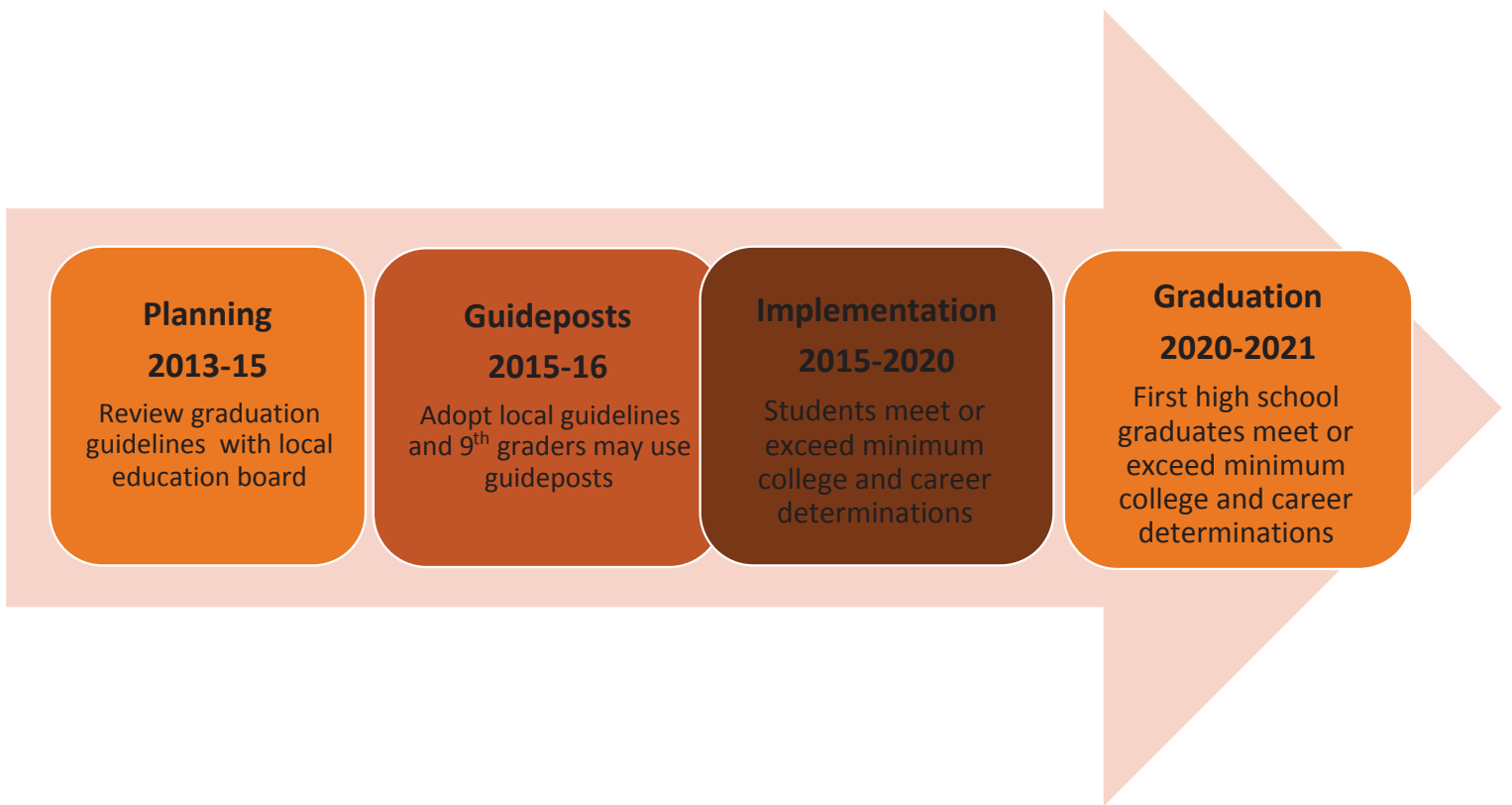
Agenda

- Overview of the day
- Review of our charge
- Presentations
 - High School Equivalency Exams
 - GED
 - HiSet
 - TASC
 - TABE
 - NWEA - MAP
- Working Lunch
- Discussion and Recommendations
 - PSAT, CP, GED, HiSet, TASC, TABE, NWEA

Introductions

- Participants
- Guests
- Share:
 - Name
 - Where you are from and who you “represent”

Implementation Timeline – Lunch Discussion



Our Charge

- Provide recommendations to the CDE for additions and revisions to the Graduation Guidelines Menu
 - Identify options that no longer work
 - Revise cut-scores or other indicators of PWR
 - Identify new demonstrations of PWR in ELA and math that could be added to the menu

Norms

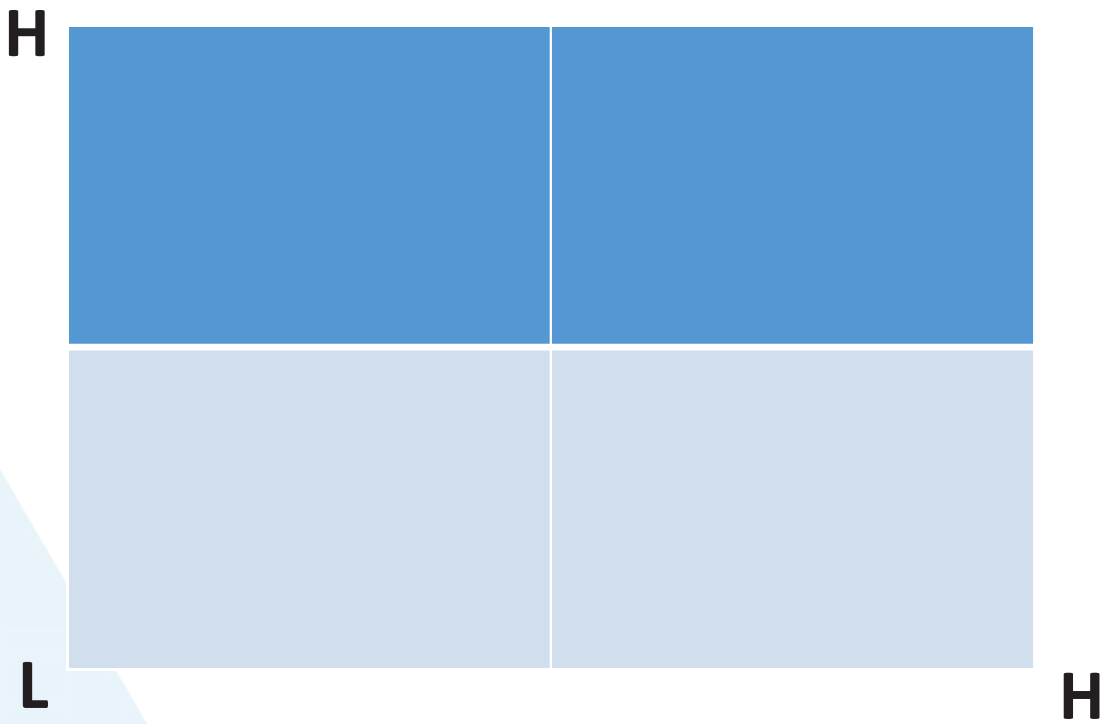
- Participate - be present and contribute
- Speak your mind - this is a safe space
 - Nothing shared without agreement from the group
 - No parking lot conversations
- Be a problem-solver
 - Identify both issues/concerns and possible solutions
- Honor thoughts of all
- Monitor balance between listening and speaking
- Help to ensure that all voices are heard
- Provide feedback on the process and product

Decision-Making

- Reach consensus
 - “I can support the general view of the group, even if I don’t agree with every specific point”
- If we cannot reach consensus, the facilitator will make the decision based on the general feeling of the group
- If need be, we can produce a “minority opinion”

Dimensions to Consider when adding to the Menu

Utility



Available to all Districts

Things to Consider

- What does the measure add to the menu?
- Is it “aligned” with postsecondary and workforce readiness?
- Is it feasible for most districts to implement?

Small Groups

- Recorder (specifics/details)
- Reporter
 - General concepts
 - Only add new ideas
 - Don't duplicate

Measure _____

+

-

Measure _____

**HSE
TABE
NWEA**

**ACCUPLACER , IB, & SAT cut scores
PSAT
Digital Badges
CPASS**

Meeting Evaluation

Next Meeting June 7 – Lowry Conference Center

- **What worked?**
- **What would make the meeting more effective?**