



ESSA Application for School Improvement (EASI)

October 2017

Agenda

- Provide background and context for the development of the EASI process
- Introduce the basic structure of the EASI application, including the routes, eligibility, cross cutting elements and available funding and service opportunities
- Walkthrough the available technical assistance during the application process



Agenda

- Provide background and context for the development of the EASI process
- Introduce the basic structure of the EASI application
- Walkthrough the available technical assistance during the application process

10/19/2017

3



ESSA State Plan Development



APPROVAL*

- Colorado Department of Education
- Governor's Office
- State Board of Education
- ESSA Committee of Practitioners

* Letter approval is required in the federal law.

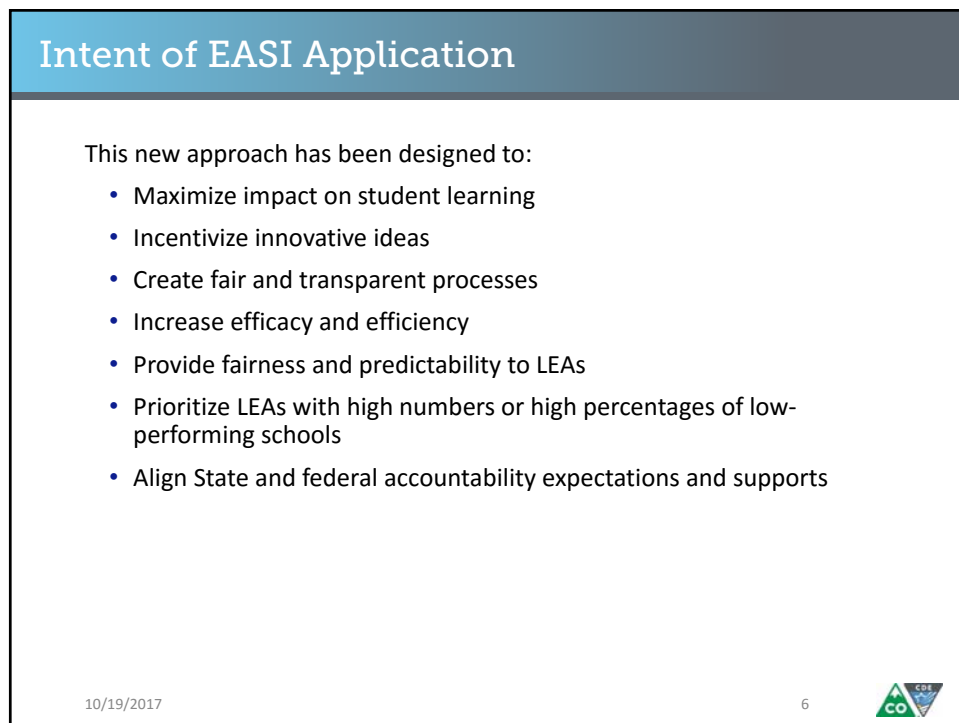
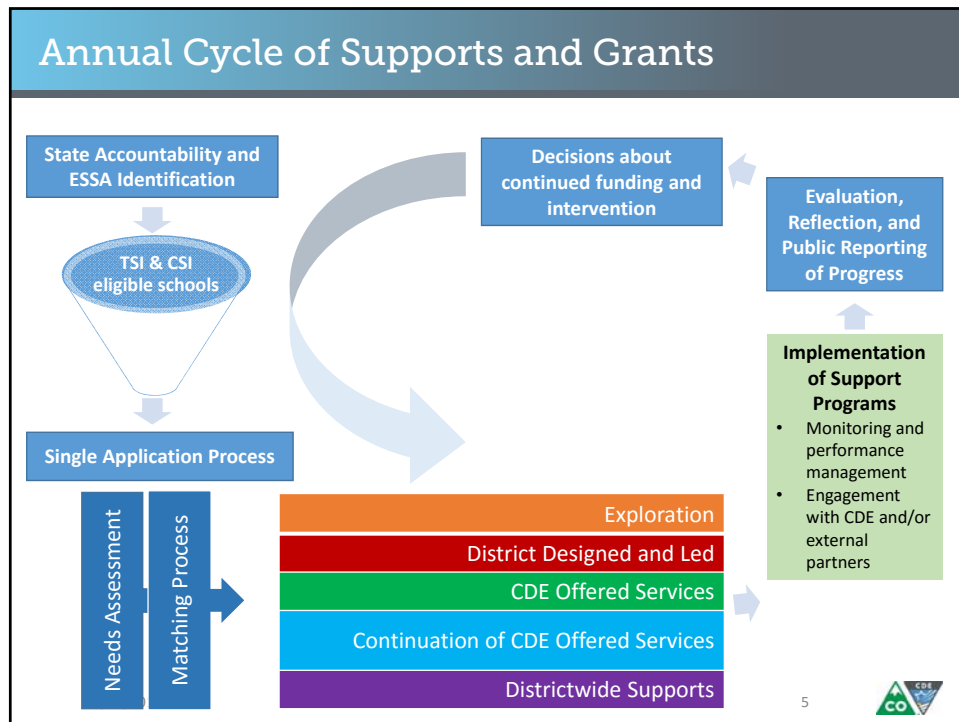
CRITICAL PARTNERSHIPS FOR INPUT THROUGHOUT THE PROCESS

- General Assembly
- School Districts
- Education organizations
- Advocacy Groups
- Parents, students & community

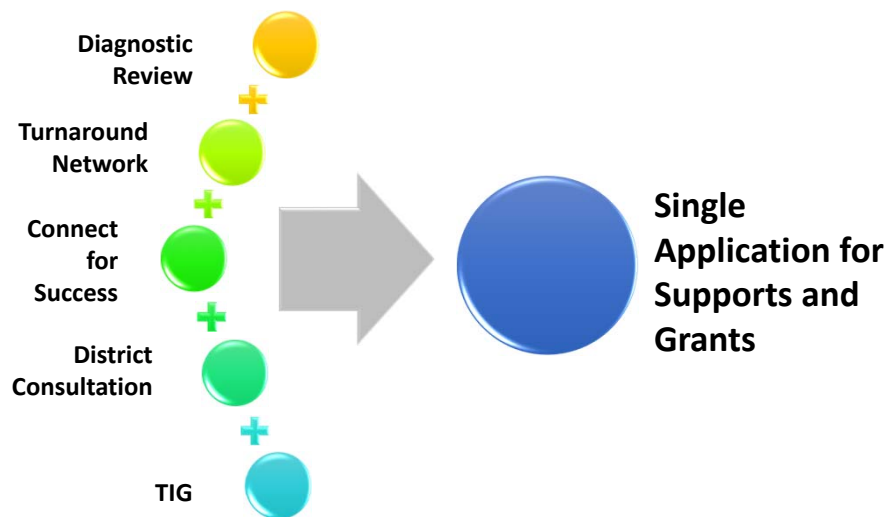
10/19/2017

4





Moving to a Needs Based Approach



10/19/2017

7



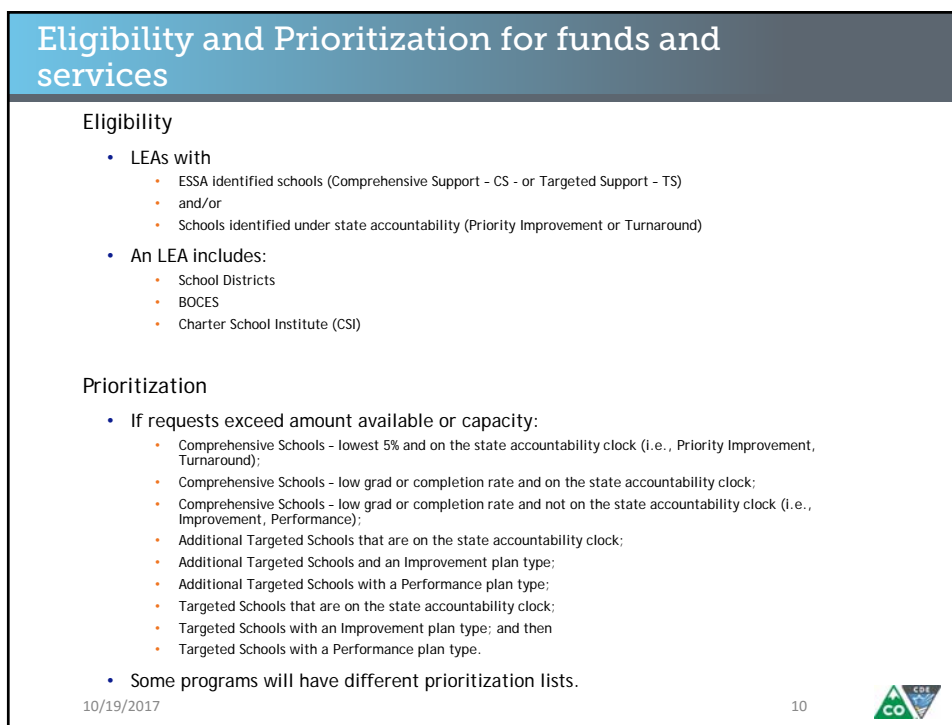
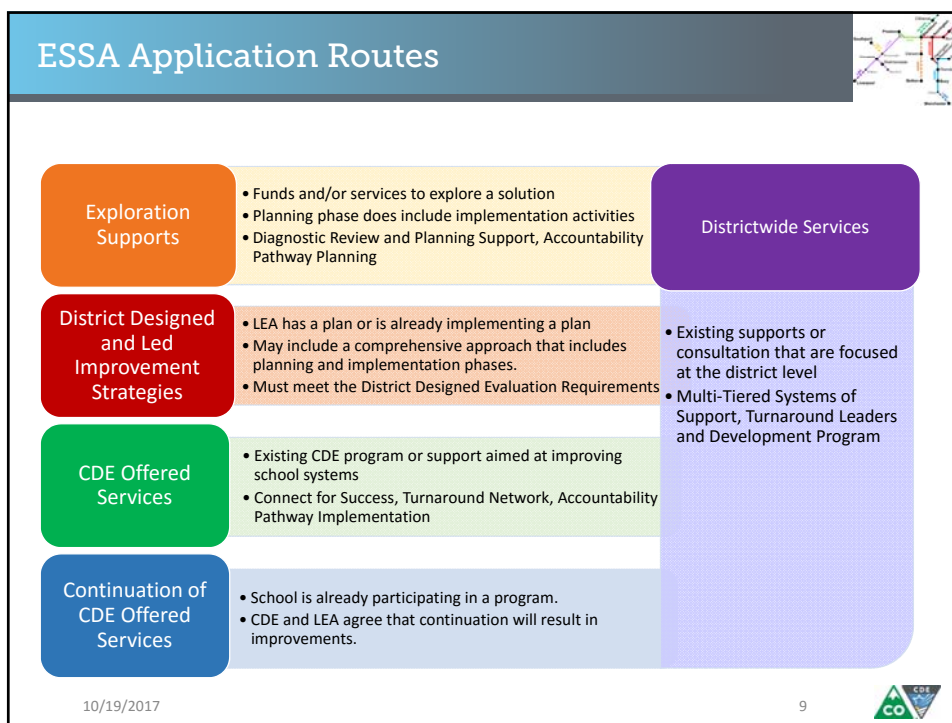
Agenda

- Provide background and context for the development of the EASI process
- Introduce the basic structure of the EASI application
- Walkthrough the available technical assistance during the application process

10/19/2017

8





Eligibility and Program Options

Services and Funding Opportunities	ESSA Identified Only	ESSA and State Clock	State Clock Only
Exploration Supports Route			
Diagnostic Review and Planning <i>No DR in last 2 years</i>	Yes	Yes	No
Accountability Pathways Planning <i>Year 3-5 on clock</i>	No	Yes	CDE consultation only
Stakeholder and Community Engagement Planning	Yes	Yes	CDE consultation only
District Designed and Led Improvement Strategies Route			
District Designed and Led	Yes	Yes	No
CDE Offered Services Route			
Connect for Success – Must be elementary or K-8 – No current Turnaround Network or TIG participation	Yes	Yes	No
Turnaround Network <i>No current Connect for Success or Tiered Intervention Grant</i>	Yes	Yes	Services only
Continuation of CDE Offered Services Route			
This route only applies to schools currently participating in CDE offered services, including the Turnaround Network, Tiered Intervention (TIG) and Connect For Success. Schools have already met continuation requirements, so LEAs do not need to reapply within this application.			
Districtwide Support Route (May stand alone or work in tandem with another route)			
CDE Consultation	Yes	Yes	Services only
Colorado Multi-Tiered System of Supports (CO-MTSS)	Yes	Yes	Services only
School Turnaround Leaders Development	No	Yes	Yes

10/19/2017

11



Available Funds

- Approximately \$9.5 million for district with schools identified through ESSA
- Approximately \$1.9 million for the state School Turnaround Leaders Development Grant
- The amount of funding a LEA may apply for is dependent on the chosen route(s). Within the Menu of Supports, each support within the routes lists the number of available slots and amount of funds available.

10/19/2017

12



Duration of Grants

- Dependent on the support program and the availability of funds, grants may be awarded for up to three years.
- Districts and schools will participate through the 2018-2019 school year, with additional years contingent upon successful participation in program activities and commitments.

10/19/2017

13



Cross-Cutting Elements



- Stakeholder Engagement
- Improvement Planning
- Evidence-based Interventions (EBI)
- Evaluation and Reporting
- Reasonable and Necessary

10/19/2017

14



Cross-Cutting Element: Stakeholder Engagement

- Meets federal and state requirements
- Stakeholders may include but are not limited to:
 - School leaders
 - Teachers
 - Parents
 - Local board
 - School Accountability Committee
- Expectations to include stakeholders at all phases of implementation (e.g., planning, initial implementation)

10/19/2017

15



Cross-Cutting Element: Improvement Planning

ESSA Planning Requirements	UIP Connection	CS	TS	Additional TS
LEA ensures a plan is developed with stakeholders (including school leaders, teachers and parents).	Data Narrative – Brief Description	◆	◆	◆
Plan is informed by student performance against state-determined long-term goals (i.e., School Performance Framework).	Data Narrative – Current Performance	◆	◆	◆
Plan includes evidence based interventions.	Major Improvement Strategy or Action Step	◆	◆	◆
Plan includes a school-level needs assessment.	Data Narrative – Trend Analysis, Priority Performance Challenge, Root Cause Analysis	◆		
Plan addresses resource inequities.	Data Narrative – Root Cause Analysis and Action Plan	◆		◆
School, LEA and SEA must approve plan.	ESSA requirements are documented within the UIP template.	◆		
Only LEA approves plan prior to implementation.	LEA may choose the format, including the UIP, to document ESSA requirements.		◆	◆
Upon approval and implementation, SEA monitors and periodically reviews plan.	CS schools on accountability clock submit Jan 15. CS schools not on accountability clock submit April 15 for CDE review.	◆		
LEA monitors and review plan, upon submission and implementation.	LEA sets timeline.		◆	◆

10/19/2017

16



Cross-Cutting Elements: Evidence Based Interventions (EBI)

Four levels of evidence:

Must meet level 1-3 for ESSA School Improvement	Tier 1 – Strong Evidence	Supported by one or more well-designed and well-implemented randomized control experimental studies.
	Tier 2 – Moderate Evidence	Supported by one or more well-designed and well-implemented quasi-experimental studies.
	Tier 3 – Promising Evidence	Supported by one or more well-designed and well implemented correlational studies (with statistical controls for selection bias).
	Tier 4 – Demonstrates a Rationale	Practices that have a well-defined logic model or theory of action, are supported by research, and have some effort underway by an SEA, LEA or outside research organization to determine their effectiveness.

10/19/2017

17



Cross-Cutting Elements: EBI (cont.)

- Strategies must fit the district/school context:
 - Need (student and school system priorities)
 - Precision (clear definition of the proposed intervention)
 - Efficiency (reasonable adoption period, sustainable after grant period)
 - Skills (staff have the ability or will be trained to implement the strategy)
 - Cultural relevance (the intervention and its outcomes are valued by stakeholders)
 - Resources (time, funding, materials, staff)
 - Organizational support (district and school leaders are invested and involved)

Based upon framework from Horner, Blitz and Ross (June 2014)

10/19/2017

18



Cross-Cutting Elements: EBI (cont.)

- Resources:
 - The Evidence for ESSA website provides the most up-to-date and reliable information on programs that meet ESSA evidence standards: <http://evidenceforessa.org>
 - The What Works Clearinghouse reviews the existing research on different programs, products, practices, and policies in education: <https://ies.ed.gov/ncee/wwcc/>
 - Reading interventions for early literacy (READ Act): <http://www.cde.state.co.us/coloradoliteracy/readact/programming>
 - Four Domains for Rapid School Improvement from the Center for School Turnaround: http://centeronschoolturnaround.org/wp-content/uploads/2017/02/CST_Four-Domains-Framework-Final.pdf

10/19/2017

19



Cross-Cutting Elements: Evaluation and Reporting

All applicants receiving funds must provide documentation through:

- The UIP*. The LEA's UIP will be reviewed during the typical UIP timelines (e.g., schools on the accountability clock by January 15 and all others by April 15) using the [Quality Criteria](#); and
- An Annual Financial Report (AFR).
- Some programs may have additional reporting requirements.

*For TS and Additional TS schools, the LEA may document requirements outside of the UIP.

10/19/2017

20



Cross-Cutting Element: Reasonable and Necessary



- Grants must be grounded in local needs
- Type and amount of cost should not exceed what a “prudent person” would pay under the same circumstances
- Costs are recognized as ordinary and required for the institution to operate program
- Costs must be essential to fulfill proper and efficient administration of program
- Generally allowable costs are:
 - Customary
 - Allowed by circulars, regulations, policy and guidance
 - Disclosed in the budget submitted to CDE
 - Approved in advance through the budget

10/19/2017

21



Agenda

- Provide background and context for the development of the EASI process
- Introduce the basic structure of the EASI application
- Walkthrough the available technical assistance during the application process

10/19/2017

22



Individual Technical Assistance

Upon request, Individual Technical Assistance is available beginning **October 18, 2017**. To request technical assistance:

For General Questions:

Laura Meushaw
303-866-6618 |
Meushaw_L@cde.state.co.us

For Online Application Technical Assistance:

Anna Young
303-866-6250 | Young_A@cde.state.co.us

General Application Questions	Laura Meushaw (Meushaw_L@cde.state.co.us or 303-866-6618) Kim Burnham (Burnham_K@cde.state.co.us or 303-866-6916)
Online Application Technical Assistance	Anna Young (Young_A@cde.state.co.us or 303-866-6250) Delliah Collins (Collins_D@cde.state.co.us or 303-866-6850)
Budget Questions	Evan Davis (Davis_E@cde.state.co.us or 303-866-6129)
Exploration Supports Route	
Diagnostic Review and Planning	Laura Meushaw (Meushaw_L@cde.state.co.us or 303-866-6618) Jennifer Morgan (Morgan_J@cde.state.co.us or 303-866-5499)
Accountability Pathways Planning	Brenda Baurisch (Baurisch_B@cde.state.co.us or 303-866-6174)
Stakeholder and Community Engagement Planning	Lisa Medler (Medler_L@cde.state.co.us or 303-866-6993) Darcy Hutchins (Hutchins_D@cde.state.co.us or 303-866-5921)
District Designed and Led Improvement Strategies Route	
District Designed and Led	Brad Bylma (Bylma_B@cde.state.co.us or 303-866-6937) Laura Meushaw (Meushaw_L@cde.state.co.us or 303-866-6618)
CDE Offered Services Route	
Connect for Success	Laura Meushaw (Meushaw_L@cde.state.co.us or 303-866-6618)
Turnaround Network	Lindsay Jaechel (Jaechel_L@cde.state.co.us or 303-866-4104)
Districtwide Support Route	
Colorado Multi-Tiered System of Supports (CO-MTSS)	Scott Ross, PhD (Ross_S@cde.state.co.us or 303-866-6853)
School Turnaround Leaders Development	Peter Sherman (Sherman_P@cde.state.co.us or 303-866-6758)
CDE Consultation	
Improvement Planning	Lisa Medler (Medler_L@cde.state.co.us or 303-866-6993) Erin Lofren (Lofren_E@cde.state.co.us or 303-866-6642) Jennifer Morgan (Morgan_J@cde.state.co.us or 303-866-5499)
Services for English Learners	Morgan Cox (Cox_M@cde.state.co.us or 303-866-6784)
Services for Students with Disabilities	Toby King (King_T@cde.state.co.us or 303-866-6964) Wendy Sawtell (Sawtell_W@cde.state.co.us or 303-866-6749)
Early Literacy	Alex Frazer (Frazer_A@cde.state.co.us or 303-908-1096) Donna Bright (Bright_D@cde.state.co.us or 303-866-6002)
Dropout Prevention and Student Re-engagement	Judith Martinez (Martinez_J@cde.state.co.us or 303-866-6127)
High Leverage Family and Community Engagement Strategies	Darcy Hutchins (Hutchins_D@cde.state.co.us or 303-866-5921)
School Board Training (in partnership with the Center for School Turnaround)	Peter Sherman (Sherman_P@cde.state.co.us or 303-866-6758)

10/19/2017

23



Office Hours

Virtual Office Hours

Dedicated technical assistance time with CDE staff members (via web-conference) may be scheduled in 15-30 minute time slots on the following dates:

Thursday, October 26: 1:30 pm – 3:30 pm

Tuesday, November 7: 10:00 am – 11:30 am

Wednesday, November 15: 12:30 pm – 2:30 pm

Tuesday, November 21: 12:00 pm – 2:00 pm

Monday, November 27: from 2:00 pm – 3:00 pm

To register for office hours, visit

www.SignUpGenius.com/go/5080545AAAA2AA2FE3-easi.

10/19/2017

24



Application Information Webinar

An application training webinar will be held on **Tuesday, October 31, 2017, from 2 – 3:30 p.m.** Register for this technical assistance via Eventbrite at <https://easiwebinar.eventbrite.com>.

If you have questions or issues regarding registration, email CompetitiveGrants@cde.state.co.us.

10/19/2017

25



Application Access

Applications for the ESSA Application for School Improvement (EASI) Grant will be submitted online at the link below.

To Access the Application: each interested LEA must designate an **Application Contact** and submit the name and contact information at the following link:
<https://www.surveymonkey.com/r/EASlappaccess>.

Once contact information has been submitted, access instructions will be emailed to the Application Contact.

10/19/2017

26



Application Timeline

Oct 31	Application Information Webinar
Oct 26, Nov 7 Nov 15, Nov 21 Nov 27	Virtual Office Hours
Dec 6, 2017	Applications due to CDE
Dec 2017	Review of Applications
Jan 12, 2018	Applicants will be notified of application status.
Jan - Feb 2018	LEAs receiving grants will work with CDE to finalize grant activities, budget, and an implementation timeline.

10/19/2017

27

