



COLORADO
Department of Education

2017 Equity and Excellence Conference: Expand Your Equity Toolkit



November 2nd - November 3rd, 2017

Hilton Denver Inverness Hotel
200 Inverness Drive West
Englewood, CO 80112

**Lunch
is
provided**

"This material was developed under a grant from the Colorado Department of Education. The content does not necessarily represent the policy of the U.S. Department of Education, and you should not assume endorsement by the Federal Government."



COLORADO

Department of Education

Exceptional Student Services Unit and
Unit of Federal Program Administration
1560 Broadway, Suite 1100
Denver, CO 80202-5149

Dear Colleagues,

We are excited to welcome you to *Equity and Excellence: Expand Your Equity Toolkit*, marking the third annual cooperative effort of the Exceptional Student Services and Federal Programs Units to produce a professional learning opportunity for the education community in Colorado. We are so pleased that you have joined us for two information-filled days of learning, networking, inspiration, and of course, expanding your toolkit for providing all students equitable access to a high quality education.

As a participant in this year's conference, you will have the opportunity to choose from a variety of exciting sessions that will provide you with tools that you can take back to your schools. The content of these sessions covers a broad landscape of topics, including culturally responsive instructional practices, whole child supports, recruitment and retention of excellent teachers, meeting individual learning needs, supporting early learning, and effective parent and family engagement. Every session was carefully selected to address current local and statewide opportunities.

As we consider innovative and effective strategies for meeting the needs of all students, we will hear from people who are making it work. Thursday's keynote speaker, Dr. Rosemarie Allen, an Assistant Professor in the School of Education at Metropolitan State University of Denver and a Global Leader representing the United States at World Conferences across the globe, will share with us her work to ensure teachers are aware of how issues of equity, privilege, and power impact teaching practices. Later on Thursday, we will be treated to a special address by NASSP National Secondary Principal of the Year and 2016 CASSP Colorado Middle Level and Secondary Principal of the Year, Dr. Tom Dodd. On Friday, Dr. Darcy Hutchins, Family Partnership Director for the Colorado Department of Education, will facilitate a panel of educators who have built successful family-school partnerships.

Again, welcome to Equity and Excellence. The Colorado Department of Education is dedicated to supporting the advancement and improvement of our education system. As we all strive for equity and excellence, let us work together to achieve better results for all of Colorado's children.

Sincerely,

Patrick Chapman
Executive Director- Federal Programs Unit

Paul Foster
Executive Director- Exceptional Student Services Unit



2017 Equity and Excellence Conference: Expand Your Equity Toolkit

Your Conference Planner

Day 1 Breakouts

Times	Conf. Room	Title/Presenter	Notes
10:45 to 12:00			
1:45 to 3:00			
3:15 to 4:30			

Day 2 Breakouts

Times	Conf. Room	Title/Presenter	Notes
10:45 to 12:00			
1:30 to 2:45			
3:00 to 4:30			

2017 Equity and Excellence Conference: Expand Your Equity Toolkit

Agenda for Thursday, November 2, 2017 Hilton Denver Inverness

- 7:30 — 10:30 Registration
- 9:00 — 9:15 Welcome - [Alpine Ballroom](#)
Katy Anthes, Commissioner, Colorado Department of Education
Melissa Colman, Associate Commissioner, Colorado Department of Education
- 9:15 — 10:15 Keynote - [Alpine Ballroom](#)
Dr. Rosemarie Allen
- 10:15 — 10:45 Break (Self-Advocate Marketplace open)
- 10:45 — 12:00 Breakouts (please choose one):
Session #1A — Lessons Learned from the High Achieving Schools Study and English Language Proficiency Act Excellence Award Evaluation -- [Aspen](#)
Session #1B — Be an Equity Ambassador! -- [Conference Room A](#)
Session #1C — A School District and Local Police Department's United Focus: Creating a Community that Cares -- [Conference Room C](#)
Session #1D — Strategies for Recruitment and Retention of Rural Educators -- [Alpine 1](#)
Session #1E — IEP Facilitation and Successful Strategies -- [Conference Room B](#)
Session #1F — Access, Equity, and Opportunity: Why the Course Placement Process Matters -- [Alpine 4](#)
- 12:00 — 1:30 Lunch Keynote:
Tom Dodd, Principal, Leshar Middle School in Poudre School District -- [Alpine Ballroom](#)
- 1:45 — 3:00 Breakouts (please choose one):
Session #2A — Social and Emotional Learning: A Pathway to Culturally Responsive Schools -- [Aspen](#)
Session #2B — Rigor for Every Student Using the Depth and Complexity Framework -- [Conference Room A](#)
Session #2C — Powerful Tools to Help Kids Rise Above Stress and Trauma, Build Their Resilience and Create Positive Change in Their Lives -- [Conference Room B](#)
Session #2D — Writing Intervention/IEP Goals Designed to Close Achievement Gaps, Simple but Profound Errors and How to Fix Them -- [Conference Room C](#)
Session #2E — Inclusive School Communication: Tips for Engaging Families Online and Off -- [Alpine 1](#)
Session #2F — What's 2Gen and How Can it Help Engage Families? -- [Alpine 4](#)
- 3:00 — 3:15 Break (Self-Advocate Marketplace open)
- 3:15 — 4:30 Breakouts (please choose one):
Session #3A — A District Approach to the Special Education Identification Process with ELL Students -- [Conference Room C](#)
Session #3B — Shared Practices: Exceptional Student Services Parent and Community Connections -- [Conference Room B](#)
Session #3C — Equity in IDEA: Gearing Up for Significant Disproportionality Regulation Changes -- [Conference Room A](#)
Session #3D — Leveraging Health and Wellness in Support of Positive Student Outcomes for All Students -- [Alpine 1](#)
Session #3E — Effective Leadership Strategies for High Impact Family Partnerships -- [Aspen](#)
Session #3F — Family Voice: Bringing Diverse Leadership to Our Schools -- [Alpine](#)

***Self-Advocate
Market Place is
open all day on
Thursday!***



*For women that would like
to use a Mother's Room,
please see the conference
registration desk.*

2017 Equity and Excellence Conference: Expand Your Equity Toolkit

Agenda for Friday, November 3, 2017 Hilton Denver Inverness

8:45 — 9:00 Welcome Back -- [Alpine Ballroom](#)

9:00 — 10:30 Family-School Community Partnerships Panel -- [Alpine Ballroom](#)

Darcy Hutchins, Colorado Department of Education

Tracie Apel, Jeffco Public Schools

Michael James, Jeffco Public Schools

Susan Kimes-Demboski, Jeffco Public Schools

10:30 — 10:45 Break

10:45 — 12:00 Breakouts (please choose one):

Session #4A – ¡Sí, Se Puede! Bringing Spanish Speaking Parents to the Forefront of Your Classroom -- [Conference Room A](#)

Session #4B – Creating Effective Educator Talent Systems to Grow and Retain Educators -- [Aspen](#)

Session #4C – SWAAAC: Supporting Assistive Technology in Education -- [Alpine 1](#)

Session #4D – Accommodations on Colorado State Assessments -- [Alpine 4](#)

Session #4E – Building Partnerships for Learning: Attending to Family and Community Engagement -- [Conference Room B](#)

Session #4F – Lessons Learned from the Eagle County School District Instructional Coaching Model -- [Conference Room C](#)

12:00 — 1:15 Lunch - Build Your Personal Toolkit Discussion -- [Alpine Ballroom](#)

1:30 — 2:45 Breakouts (please choose one):

Session #5A – Fostering Equity and Excellence: ESSA Updates and Trauma-Informed Strategies for Students in Foster Care -- [Conference Room A](#)

Session #5B – SOS! Social Emotional Learning for Staff and Students -- [Aspen](#)

Session #5C – A Roadmap for SED Programming: the New CDE Quality Indicators for Serious Emotional Disability (SED) -- [Alpine 1](#)

Session #5D – P-3 Early Learning Strategies -- [Alpine 4](#)

Session #5E – Serving the Unique Needs of Families -- [Conference Room B](#)

Session #5F – Indicator 8 Parent Survey Data and Parent Partnership Efforts for Families Who Have Students with Disabilities -- [Conference Room C](#)

2:45 — 3:00 Break

3:00 — 4:30 Optional Networking Meetings

New ESSA Program Administrators: Meet your CDE contacts and learn about resources available to make your job easier! - [Aspen](#)

Metro Special Education Directors – [Alpine 2 & 3](#)

Southern Special Education Directors – [Alpine 1](#)

Northern Special Education Directors – [Alpine 4](#)

Pikes Peak Special Education Directors – [Conference Room A](#)

Outback Special Education Directors – [Conference Room B](#)

Facility Schools Directors – [Conference Room C](#)

Thursday, November 2nd, 2017

Breakout Session Description

Session #1A Lessons Learned from the High Achieving Schools Study and the English Language Proficiency Act Excellence Award Evaluation

Topic Area: *Culturally Responsive Instructional Practices*

Focus: *Leadership Practices*

Presenters: *Nazanin Mohajeri-Nelson, Colorado Department of Education, Linnea Hulshof, Colorado Department of Education, Barbara Vassis, Colorado Department of Education, Ann-Mari Westerhoff, Summit School District, Jill Heil, Summit School District, Kim Easdon, Harrison School District, Stephanie Johnson, Lewis-Palmer School District 38, John McCay, Poudre School District, Caroline Gaudiani, DSST, Christine Hendricks, Poudre School District*

CDE has conducted comprehensive evaluations of schools identified as high achieving based on the performance of their disaggregated groups and districts identified as high performing based on the achievement and growth of their English Learners. CDE will share the results of the evaluation findings, including lessons learned from onsite visits and reports submitted by award recipients. This session will provide a summary of the evidence-based practices that have contributed to the success of these schools, particularly practices noted to be common across awardees. A panel of school and district representatives will share their expertise, experience and journey toward achieving high performance. Session attendees will have an opportunity to pose questions and engage in discussions with panelists.

Session #1B Be an Equity Ambassador!

Topic Area: *Culturally Responsive Instructional Practices*

Focus: *Instructional Practices*

Presenters: *Lauren Jones, Colorado Community College System*

Engagement, Placement and Relationships with our students begins with experiencing Cultural Literacy and Educational Equity in their learning. Join us in this interactive deep dive, and walk away with a toolkit and access to great resources to utilize as you become an Ambassador of Equity. Navigate the circulating equity practices including micromessaging, mindset, implicit bias, stereotype threat, self-efficacy. We will utilize the teachings of National Alliance for Partnerships in Equity (NAPE) and the pedagogy of Career & Technical Education (CTE) to navigate the activities, lessons, mindsets and behaviors circulating equity practices. Experience interactive and experiential activities that support equity endeavors.

Session #1C A School District and Local Police Department's United Focus: Creating a Community that Cares

Topic Area: *Whole Child Supports*

Focus: *Leadership Practices*

Presenters: *Montina Romero, Fountain-Fort Carson School District 8, Lisa Zimprich, Fountain-Fort Carson School District 8, Sergeant Moses Cho, Fountain-Fort Carson School District 8, Corporal Matthew Sanchez, City of Fountain Police Department*

The Fountain-Fort Carson School District and Fountain Police Department will discuss the year-long journey to implement a comprehensive School Resource Officer Program that embraces prevention. Also, a thorough threat and suicide risk assessment process, that supports a safe and secure learning environment, will be discussed with participants. A question and answer session as well as a walk through of relevant documents, including how to utilize student information systems to store and track data, and supports will be provided.

Session #1D Strategies for Recruitment and Retention of Rural Educators

Topic Area: *Recruitment and Retention of Excellent Teachers*

Focus: *Leadership Practices*

Presenters: *Dr. Harvey Rude, Colorado Center for Rural Education, Dr. Lori Reinsvold, Colorado Center for Rural Education, Dr. Rob Reinsvold, Colorado Center for Rural Education, Megan Quitter, Colorado Center for Rural Education, Dr. Robert Mitchell, University of Colorado, Colorado Springs*

The Colorado Center for Rural Education is implementing a five-year Rural Educator Recruitment and Retention project in cooperation with the Colorado Department of Higher Education. The intended audience for this presentation is educators from BOCES and rural school districts. The goals of the session are to: (1) describe current pipeline initiatives to increase the number of educators in rural schools; (2) describe the Rural Teaching Scholars program that supports student teachers from Colorado IHEs for placement in rural schools; (3) outline the supports available to rural educators pursuing Concurrent Enrollment Educator Qualification; and (4) outline the supports available to rural educators pursuing National Board Teacher Certification. The participation data and impact evaluation will be shared on each of these topical areas.

Thursday, November 2nd, 2017

Breakout Session Description

Session #1E IEP Facilitation and Successful Strategies

Topic Area: *Effective Parent and Family Engagement*

Focus: *Leadership Practices*

Presenters: *Mary Anne Fleury, Colorado Department of Education, Missy Sieders, PEAK Parent Center*

Results Driven Accountability is not just the name of a team within Exceptional Student Services Unit. Results Driven Accountability is the accountability framework from the U.S. Office of Special Education Programs based on the foundation that compliance is necessary but not sufficient to improve student outcomes. Come join us in a conversation about student outcomes, results driven accountability and next steps.

Session #1F Access, Equity and Opportunity: Why the Course Placement Process Matters

Topic Area: *Culturally Responsive Instructional Practices*

Focus: *Policy*

Presenter: *Dr. Philip Bernhardt, Metropolitan State University of Denver*

The course placement process frequently creates hidden barriers that makes it difficult for students to access certain academic pathways. This issue is often absent from school-wide discussions about course-taking, college readiness, and student learning. If our goal is to increase access to coursework that prepares students for higher education, “how” students gain access must be understood. Participants will be challenged to examine course placement practices in their school/district and consider strategies to increase access, opportunity, and equity.

Session #2A Social and Emotional Learning: A Pathway to Culturally Responsive Schools

Topic Area: *Culturally Responsive Instructional Practices*

Focus: *Leadership Practices*

Presenter: *Elizabeth Domangue, Harrison School District*

Social-emotional Learning (SEL) is a process of acquiring knowledge and skills related to five core competencies. The five competencies have a direct correlation to meeting the academic and social-emotional needs of our students and ourselves (as educators). This is especially important as we strive to develop schools and classes that are inclusive, positive, and excellent for all learners. This session will use the SEL model to create a more culturally competent learning environment—one that all students deserve. The model considers the following components: self-awareness, responsible decision making, relationship skills, social awareness, and self-management. These are critical competencies for the development of culturally responsive schools and learners.

Session #2B Rigor for Every Student Using the Depth and Complexity Framework

Topic Area: *Culturally Responsive Instructional Practices*

Focus: *Instructional Practices*

Presenters: *Karen Kendig, Colorado Department of Education, Jacquelin Medina, Colorado Department of Education*

The Depth and Complexity Framework is a comprehensive model for inquiry based learning, collaborative student discussions and rigorous standards based instruction for all students. A key component of the Depth and Complexity Framework is the use of visual prompts to focus student thinking and doing. This method differentiates the rigor of thinking at the level of student learning. Qualitative data and observation of students’ thinking processes informs teacher guided and student selected differentiation that nurtures student strengths for success. The presentation will include interactive partner sharing and small group engagement using the Depth & Complexity prompts. People who influence or facilitate professional development and aim to increase capacity to provide rigorous instruction for every student, using any standard and any curriculum, will want to attend.

Session #2C Powerful Tools to Help Kids Rise Above Stress and Trauma, Build Their Resilience and Create Positive Change in Their Lives

Topic Area: *Whole Child Supports*

Focus: *Instructional Practices*

Presenters: *Dianne Maroney, Imagine Project, Bernadette Musetti, Loyola Marymount University*

This session is for educators, counselors, administrators, and youth leaders who would like tools for helping students cope with stress and trauma. Participants will learn the impact of stress and trauma on children and teens in the classroom, at home, and throughout adulthood. The Imagine Project 7-step expressive writing process will be taught and experienced by participants. These tools are simple, effective, and profound in helping kids cope with stress and trauma. Participants will be able to take the tools back to their work place and easily implement them.

Thursday, November 2nd, 2017

Breakout Session Description

Session #2D Writing Intervention/IEP Goals Designed to Close Achievement Gaps, Simple but Profound Errors and How to Fix Them

Topic Areas: *Meeting Individual Learning Needs*

Focus: *Leadership Practices*

Presenters: Jon Paul Burden, Weld RE-4 School District, Jennifer Sedaghat, Weld RE-4 School District

This session will walk participants through a new method of IEP and RtI goal writing with goals that are designed to close achievement gaps. Typically, intervention goals are designed to improve skills, but often are actually set too low to make grade level improvements. This session will highlight the fallacies of those models and provide a new template for goal writing, instructional targets and overall improved student achievement. Session includes examples, research, and handouts for ready application when participants return to the school.

Session #2E Inclusive School Communication: Tips for Engaging Families Online and Off

Topic Areas: *Strategies for Effective Parent and Family Engagement*

Focus: *Leadership Practices*

Presenters: Kristina Saccone, Partner & Purpose, Kasey Lynch, Ellis Elementary School, Akudo Nwokeukwu, Place Bridge Academy, Heather Wilson, School Deets

The session will begin with an interactive survey to assess the audience's current communications plan. Then the panel will discuss lessons learned, directed to the audience's specific needs. Included will be both online and offline strategies for engaging diverse populations in school communications, as well as ways to take a data-driven approach to communications. Participants will learn ways to use that data to better understand what information parents want and how to get that information to them in the most effective way possible, particularly with families that do not speak English at home.

Session #2F What's 2Gen and How Can it Help Engage Families?

Topic Areas: *Supporting Early Learning*

Focus: *Leadership Practices*

Presenters: Judith Martinez, Colorado Department of Education, Tara Smith, Office of the Governor

The 2Gen approach promotes intergenerational opportunities for families that face economic challenges and unique barriers to school engagement. This workshop explores applying a 2Gen approach in schools and communities. Attend to receive an overview of 2Gen, plus explore tools and resources to expand opportunities for children, their parents and families "together" and move away from fragmented efforts in addressing needs and supporting educational and economic success.

Session #3A A District Approach to the Special Education Identification Process with English Language Learner Students

Topic Areas: *Culturally Responsive Instructional Practices*

Focus: *Leadership Practices*

Presenters: Laura Hess, St. Vrain Valley School District, Emily Scott, St. Vrain Valley School District, Timothy Sanford, St. Vrain Valley School District, Amy Moore, St. Vrain Valley School District, Eileen Maresca, St. Vrain Valley School District, Kristy Roome, St. Vrain Valley School District

Round table discussion and presentation for district level and building based teams to support team making decisions in the evaluation process for English Language Learners. Goals of the presentation will be to provide audience members with decision making tools to enhance the evaluation process for students with second languages. Participants will be engaged through opportunities to participate in round table discussions and activities. Activities will be based on how to incorporate the C-LIM with other evaluation and data collection tools to support decision making for students with English Language Learner concerns.

Session #3B Shared Practices: Exceptional Student Services Parent and Community Connections

Topic Areas: *Strategies for Effective Parent and Family Engagement*

Focus: *Leadership Practices*

Presenters: Stephanie Johnson, Lewis Palmer School District, Michelle Nay, Lewis Palmer School District

The session is aimed to share successful parent, school and community connection practices within the Special Education and English Learner community. We will discuss ways to strengthen district family liaison positions as well as lessons learned. Specific topic areas will include successful programming, effective communication strategies, advocacy skills, ways to empower parents, connecting with community resources and identifying as well as addressing gap areas.

Thursday, November 2nd, 2017

Breakout Session Description

Session #3C Equity in IDEA: Gearing Up for Significant Disproportionality Regulation Changes

Topic Areas: *Culturally Responsive Instructional Practices*

Focus: *Policy*

Presenters: *Miki Imura, Colorado Department of Education, Vicki Graham, Colorado Department of Education, Fran Herbert, Colorado Department of Education, Michael Ramirez, Colorado Department of Education, Dennis Rastatter, Boulder Valley Re-2 School District, Laura Hess, St. Vrain Valley School District*

The regulation regarding significant disproportionality (34CFR§330) was amended in December 2016 and will be in effect starting in the 2018-19 school year. In this session, Colorado Department of Education Exceptional Student Services personnel will share how this regulation change will affect Colorado and its administrative units and districts from data, fiscal, and monitoring perspectives. Local Special Education Directors and Title Directors are encouraged to join. The session will also include updates from the most recent significant disproportionality stakeholder meetings, in which Colorado's definition of significant disproportionality is determined.

Session #3D Leveraging Health and Wellness in Support of Positive Student Outcomes for All Students

Topic Areas: *Whole Child Supports*

Focus: *Leadership Practices*

Presenters: *Erin Loften, Colorado Department of Education, Frank Reeves, East Grand School District, James Chamberlain, Fraser Valley Elementary Principal, Andrea Pulskamp, Colorado Education Initiative*

This session will address how the East Grand School District is leveraging health and wellness in support of positive student outcomes for all students. There will be specific focus on health and wellness data sources that can be used to inform Comprehensive Needs Assessments and monitor effectiveness of implementation. Partners from CEI and CDE will describe how data and the UIP process can be leveraged in both meeting compliance expectations and in meeting the needs of the whole child.

Session #3E Effective Leadership Strategies for High Impact Family Partnerships

Topic Areas: *Strategies for Effective Parent and Family Engagement*

Focus: *Leadership Practices*

Presenters: *Darcy Hutchins, Colorado Department of Education, Lisa Steffen, Colorado Department of Education*

This session will offer strategies for district leaders as they support schools in developing comprehensive and sustainable family-school-community partnership structures. Participants will discuss how to implement research based strategies to support district-level leadership, develop school leaders and facilitate best practice in schools. Presenters will share local and national examples of promising partnership practices.

Session #3F Family Voice: Bringing Diverse Leadership to Our Schools

Topic Areas: *Strategies for Effective Parent and Family Engagement*

Focus: *Leadership Practices*

Presenter: *Patti Schmidt, Colorado State University*

At this interactive session, we will explore parent leadership and how to create a welcoming environment that successfully engages parents and families in school improvement plans. Come to learn more and discuss innovative leadership and engagement tools that all schools and districts can use to start the conversation on how to effectively engage parents in our schools in a leadership capacity.

We will end this session by exploring different engagement strategies and learn about a free leadership and civic engagement class offered through Colorado State University, called the Family Leadership Training Institute (FLTI). FLTI is a free community-based class open to any adult and youth around the State of Colorado and is transforming how schools, districts, and community partners approach some of their most difficult community issues. This innovative approach features creating an environment where youth, schools, and parents cocreate the solutions to the community issues weighing our schools and communities down. Additionally, we will highlight stories from around the state on how this evidenced-based program is creating positive changes for youth and families.



Friday, November 3rd, 2017

Breakout Session Description

Session #4A ¡Sí, Se Puede! Bringing Spanish-speaking Parents to the Forefront of Your Classroom

Topic Areas: *Culturally Responsive Instructional Practices*

Focus: *Instructional Practices*

Presenter: *Steve Foster, Denver Public Schools*

For this session our main objective is to help improve the effectiveness of educators in order to include Spanish-speaking families in the conversation regarding the success of their students. We will discuss tools for teachers wishing to gain Spanish proficiency, whether or not they are able to participate in an immersion program. We will also collaborate on strategies to use with non-English speaking parents and community members in order to help facilitate an inclusive school community.

Session #4B Creating Effective Educator Talent Systems to Grow and Retain Educators

Topic Areas: *Recruitment and Retention of Excellent Teachers*

Focus: *Leadership Practices*

Presenters: *Mary Bivens, Colorado Department of Education, Colleen O'Neil, Colorado Department of Education*

While there are many techniques to cultivate top talent, many organizations with effective human capital systems embrace the same best practices. In this session, you will learn how to create Effective Educator Talent Systems to grow and retain our educators through attracting quality talent with diverse backgrounds, using strategic recruitment systems that engage top candidates through targeted outreach and support, and developing selection processes that evaluate candidates' fit and expected performance on central job responsibilities.

Session #4C SWAAAC: Supporting Assistive Technology in Education

Topic Areas: *Meeting Individual Learning Needs*

Focus: *Instructional Practices*

Presenter: *Maureen Melonis, Colorado Department of Education*

Utilizing AT to ensure that all students are prepared for success in society, work and life. During this interactive breakout, participants will learn more about the statewide SWAAAC program which supports positive student outcomes through assistive technology. This session will highlight key aspects of the program and share resources to help districts serve students. Recent success stories, new technologies available and exciting data will be highlighted. The session will highlight effective use of data to influence AT service delivery in the state.

Session #4D Accommodations on Colorado State Assessments

Topic Areas: *Meeting Individual Learning Needs*

Focus: *Policy*

Presenter: *Mindy Roden, Colorado Department of Education*

This session will provide information on the current state assessments, including what accessibility features and accommodations students may have for each assessment. The intended audience is teachers and district level staff. The session will be interactive and participants will be encouraged to ask questions. Data on accommodation usage will be shared along with national recommendations regarding assessment of students with disabilities.

Session #4E Building Partnerships for Learning: Attending to Family and Community Engagement

Topic Areas: *Strategies for Effective Parent and Family Engagement*

Focus: *Leadership Practices*

Presenters: *Maria Elena Garcia, M.E. Garcia Educational Consulting, Inc., Ceri Dean, Dean Education Consulting*

You think you selected perfect strategies for family and community engagement. Then, during implementation, things don't go as planned. In this session, we examine research, promising practices, and useful tools and resources for school staff to use to strengthen relationships with families and community members, particularly in culturally diverse communities. A focus will be on helping school staff understand how their own cultural experiences and backgrounds influence their beliefs and assumptions about families and community members, and consequently influences their efforts to engage others in support of student learning.

Friday, November 3rd, 2017

Breakout Session Description

Session #4F Lessons Learned from the Eagle County School District Instructional Coaching Model

Topic Areas: *Culturally Responsive Instructional Practices*

Focus: *Instructional Practices*

Presenters: Susan Elliott, Eagle County School District, Shannon Peterson, Eagle County School District, Dana Reynolds, Eagle County School District

Eagle County School District implemented an instructional coaching model five years ago. Since that time, the model has been re-constructed to offer more meaningful support to general education teachers, special education teachers, and service providers. The new model utilizes a request-based system that allows coaches to provide timely and structured support to staff based on instructional goals. During the presentation, we will provide information about the need to change the model, as well as data and feedback we have received from our staff members about the support they have received since the new model was implemented in the 2016-2017 school year.

Session #5A Fostering Equity and Excellence: ESSA Updates, and Trauma-Informed Strategies for Students in Foster Care

Topic Areas: *Whole Child Supports*

Focus: *Instructional Practices*

Presenter: Kristen Myers, Colorado Department of Education

Current Data: 2015-16 Colorado education data indicates there were 5,073 students in foster care at any given time. Approximately 30% of these students were on an IEP, and the majority were identified as having a serious emotional disability or specific learning disability. Children in foster care have likely experienced trauma in the events leading up to entering the foster care system, which frequently influences the way in which they learn and interact socially. The Every Student Succeeds Act (ESSA) contains specific foster care provisions to provide youth involved in the foster care system access to an equitable and stable education program.

Session #5B SOS! Social Emotional Learning for Staff and Students

Topic Areas: *Whole Child Supports*

Focus: *Instructional Practices*

Presenter: Lori Bitar, SOS Education Services

Being a teacher can be isolating and sometimes you need a morale boost, some reassurance that what you do matters, and some fun ideas for personal and professional development. In this session, you will gain new strategies for you and your students in Social Emotional Learning that will support you in unleashing your inner Super-H.E.R.O. Participants will be able to: increase awareness of strategies and techniques for personal and professional SEL growth and develop a plan to implement SEL learning and goals.

Session #5C A Roadmap for SED Programming: The New CDE Quality Indicators for Serious Emotional Disability (SED)!

Topic Areas: *Meeting Individual Learning Needs*

Focus: *Instructional Practices*

Presenters: Julia Wigert, Colorado Department of Education, Londi Howard, Colorado Department of Education

This session is intended for instructional or special education leaders that oversee programming for students with serious emotional disabilities (SED) or teams designing programming for students with SED. This session will cover intended uses for the indicator tool, as well as an overview of the development and research basis for each of the domains of the quality indicators. Participants will learn about targets for SED programming in the domains of instruction, behavior systems, behavioral health and wellness, family and community partnerships, and more. Additionally, participants will learn how the tool can be used as a self-evaluation tool to action plan and monitor progress in implementing high quality programming for students with SED.

Friday, November 3rd, 2017

Breakout Session Description

Session #5D P-3 Early Learning Strategies

Topic Areas: *Supporting Early Learning*

Focus: *Leadership Practices*

Presenter: Emily Kielmeyer, Colorado Department of Education

Are you thinking about why a preschool to 3rd grade approach to elementary education is important and what it means for instruction and for increasing student outcomes? Looking for information on successful strategies being implemented in Colorado schools and districts? Join us for this interactive session to learn more about P-3 tools, and resources to support early learning strategies.

Session #5E Serving the Unique Needs of Families

Topic Areas: *Strategies for Effective Parent and Family Engagement*

Focus: *Leadership Practices*

Presenters: Remy Rummel, Douglas County School District, Cynthia Close, Douglas County School District, Natasha Straayer, Douglas County School District

This session will focus on DCSD's ELD family and community engagement practices. Educators (teachers, administrators, family liaisons, etc.) are invited to explore frameworks for serving English Learners and their families. Participants will engage in discussion and practice around: analyzing the data necessary to create a successful family and community engagement framework, specific strategies that meet a variety of unique family needs, and an understanding of how shifting practice in DCSD has engaged and reunited families with the DCSD's ELD department.

Session #5F Indicator 8 Parent Survey Data and Parent Partnership Efforts for Families Who Have Students with Disabilities

Topic Areas: *Strategies for Effective Parent and Family Engagement*

Focus: *Leadership Practices*

Presenters: Miki Imura, Colorado Department of Education, Joyce Thiessen-Barrett, Colorado Department of Education, Sarah Belleau, Poudre School District, Rachael Browning, Weld Re5J School District, Julie Goldberg, Eagle County School District, Jocelyn Walters, Centennial BOCES

Join us for a discussion and presentation on the statewide results of our Indicator 8 Parent Survey Data from across the state of Colorado. This breakout session is presented in collaboration with four special education directors and the Exceptional Student Services Unit. Strategies and tools will be provided to generate ideas on how districts can increase their response rates, increase their parent partnership efforts, and how data can be used to improve outcomes for students. Due to the high correlation between parent involvement and academic success, this overview of data results, along with strategies and tools for increased participation and partnership efforts appear vital to ongoing special education improvement in the state.



Colorado Department of Education



Katy Anthes, Ph.D., is the Colorado Commissioner of Education. Named commissioner of education in December 2016, Dr. Katy Anthes is widely respected for her commitment to listen to diverse perspectives and develop solutions that are founded on productive middle ground. Keeping students' best interests as her top priority, she focuses on providing high quality expertise and support to districts and educators working to enhance student achievement. Dr. Anthes has been with CDE since 2011, serving as interim Commissioner, Chief of Staff, interim Commissioner for Achievement and Strategy and Executive Director of Educator Effectiveness. In that role, she led CDE's efforts to evaluate, support and retain highly effective educators in Colorado. In addition, Dr. Anthes was responsible for rolling out the state's educator evaluation and development system, pursuant to Senate Bill 10-191. In her past position as a partner with the Third Mile Group, Anthes led and researched major education initiatives for state, district and national organizations on a variety of education issues and projects including; the Colorado School Leadership Academy Board, the Expanded Learning Opportunities Commission and as an evaluator for several district education programs across the state.

Anthes worked with numerous national education organizations at The Third Mile Group, such as the Council for Chief State School Officers, the National Governor's Association, The National Commission for Teaching and America's Future, American Institutes for Research, and many more. Prior to founding the Third Mile Group, she had seven years of research, policy work and leadership experience at the Education Commission of the States focusing on school and district leader effectiveness. Anthes holds a Ph.D. in public policy and a master's degree in public affairs from the University of Colorado Denver. She did her undergraduate work at the University of Oregon. Anthes lives in Denver and is an avid runner and soccer enthusiast. Upon being appointed Commissioner of Education, Dr. Katy Anthes became Colorado's first female commissioner in 65 years, preceded only by the state's inaugural commissioner Nettie S. Freed in 1950-51.

Melissa Colman is the Associate Commissioner of Student Learning Dr. Melissa Colman was appointed associate commissioner of student learning at the Colorado Department of Education in January 2017. Melissa has been in public education for 28 years, serving at CDE for the past eight years. Among her roles at CDE, Melissa has served as the state's mathematics content specialist, and mostly recently, as the Executive Director of Teaching and Learning. Before coming to the department, Melissa was the district K-12 mathematics coordinator for a Denver metro area school district, and she taught middle school mathematics for 15 years. As a classroom teacher, Melissa received recognition for her teaching expertise, including National Board Certification and the Presidential Award for Excellence in Mathematics and Science Teaching, the highest award a mathematics or science teacher can receive. Melissa has her Ph. D. in Educational Leadership and Innovation from the University of Colorado at Denver. Her master's degree in is Interdisciplinary Studies in mathematics, science, and technology from the University of Northern Colorado.



Patrick Chapman is the Executive Director of Federal Programs at the Colorado Department of Education. In that role, he oversees the implementation of several of the Federal Elementary and Secondary Education Act programs as well as Colorado's English Language Proficiency Act programs. Prior to working at CDE, he was a Research Analyst for the American Association for Protecting Children, Director of Community Resources for the Southwest Mental Health Center, and an Instructor for Developmental Pathways. He holds Bachelor's Degrees in Psychology and Sociology and a Master's in Social Psychology. He also received graduate certification in Alternative Dispute Resolution at the University of Denver which he tries to utilize daily in his role at CDE.

Paul Foster brings to CDE deep experience in school and district leadership serving students with disabilities and their families. Specifically, he has 20 years of experience as a director of special education in rural, urban, and suburban Texas school districts and 11 years as a classroom teacher, garnering a wealth of knowledge that will serve Colorado's diverse settings well. Paul earned his bachelor's degree in Special Education, master's degree in Educational Psychology, and doctoral degree in Educational Administration and Leadership from Baylor University where he has also served as adjunct professor in the School of Education.



Meet the Keynotes

Rosemarie Allen has served as a leader in early childhood education for over 30 years. Her life's work is centered on ensuring children have access to high quality early childhood programs that are developmentally and culturally appropriate. She is currently an Assistant Professor in the School of Education at Metropolitan State University of Denver. Her classes are focused on ensuring teachers are aware of how issues of equity, privilege, and power impact teaching practices. Rosemarie has served in directorship roles with the Colorado Department of Human Services, most recently in the Division of Youth Corrections (DYC). As Director of Programs at DYC, she was responsible for the education, health, and mental health of all adjudicated youth in the State. She was also responsible for the professional development of all Division staff members in order to ensure state-wide culture change. From 2007-2012 Rosemarie served as the Director of the Division of Child Care. In that role, she oversaw the State's child care licensing program, the federal child care assistance program, the redesign of the State's quality rating and improvement system, the implementation of the State's professional development plan, and assisted in the creation of Colorado's early learning guidelines. She recently served on President Obama's "My Brother's Keeper" initiative, Early Childhood Task Force. Dr. Allen also launched the Institute for Racial Equity and Excellence that will serve as the lead agency for ensuring equity in educational practices throughout the nation.



Rosemarie is a respected keynote speaker, presenting on Culturally Responsive Practices, Cultural Competence, Micro-Aggressions, Racial Disproportionality, Privilege, Power and Intersectionality, etc. She also has the distinct honor of being appointed as a "Global Leader" to represent the United States at World Conferences across the globe. Rosemarie earned her B. A. from California State University, Master's of Education from Lesley University and Doctorate in Equity and Leadership in Education at the University of Colorado, Denver. Rosemarie is married to Don Allen and they have two amazing children. Jasmine is a Couples and Family therapist in Denver, Colorado and Clarence is a Senior at Howard University in Washington, D.C.



Tom Dodd: The 2017 NASSP National Secondary Principal of the Year and 2016 CASSP Colorado Middle Level and Secondary Principal of the Year, Dr. Tom Dodd is in his 13th year as principal of Leshar Middle School, an International Baccalaureate (IB) World School in Fort Collins, Colorado serving 770 students grades 6 – 8. Leshar is the first Colorado school to be recognized as a 2017-21 Gold Level Bike Friendly Business by The League of American Bicyclists, was redesignated as a 2017-2020 National Forum to Accelerate Middle Grades Reform/CAMLE School to Watch after being initially recognized from 2014-17 and an NASSP Breakthrough School in 2017 after being initially recognized in 2012, as well as a 2016 CHAMP School of Character, 2016 SafeRoutes to School National Partnership Hubsmith Award Nominee, and 2014 USDE Green Ribbon School. Tom served as the Region 2a Director with the CASSP Board representing the school districts in Boulder, Clear Creek, Gilpin, Jefferson, and Larimer counties from 2015-17, and has been elected

to a 3-year term as CASE President-elect/President/Past-president beginning in 2017-18. Tom served as vice principal of Aspen (CO) High School from 2001-03, and as associate principal, teacher, wrestling and football coach at Eagle Valley High School (Gypsum, CO) from 1995-2001. He earned his Ph.D. in Educational Leadership and the Donald J. Willower Outstanding Dissertation Award in 2015 and Superintendent License in 2005 from Penn State University (University Park, PA) while an assistant editor of the American Journal of Education and the certification officer for the Education Policy Studies Department from 2003-05. He earned his Principal License in 1999 from Colorado State University (Fort Collins, CO), two MAs in Secondary Education/Social Studies and Health, Physical Education, and Recreation in 1995 from Adams State University (Alamosa, CO) while an instructor of exercise physiology/leisure science and assistant wrestling coach from 1993-95, and a BA in History/Secondary Education in 1992 from Susquehanna University (Selinsgrove, PA).

Meet the Keynotes

Darcy Hutchins, Ph.D. in Education Policy from the University of Maryland—College Park, is the Director of Family Partnerships for the Colorado Department of Education (CDE). She provides support to districts to implement family partnership programs for student success, particularly through parent participant on school and district accountability committees. In her role at CDE, Dr. Hutchins staffs the State Advisory Council for Parent Involvement in Education (SACPIE). She also teaches in the School of Education at University of Denver and serves on various advisory boards. Before joining CDE, Dr. Hutchins worked eight years as a Senior Program Facilitator at the National Network of Partnership Schools at Johns Hopkins University. In this role, she provided technical assistance to districts across the country to implement school, family, and community partnership programs. She began her career as a first grade teacher in Baltimore City Public Schools. Dr. Hutchins has conducted several research studies about the impact of school- and district-level leadership on school, family, and community collaboration, as well as evaluation projects. She has multiple book and article publications, including *Family Reading Nights* (Eye on Education, 2014) and *Multicultural Partnerships Involve all Families* (Eye on Education, 2012).



Susan Demboski is the Family Engagement Liaison at Shelton Elementary and has spent a decade devoted to enriching families' experiences with the school community. Family engagement is the collaboration between families and educators that accelerates student learning. By working together, we build and support families to be empowered, active participants in the life of the school. They feel welcomed, valued, and connected to each other, to school staff, and to what students are learning and doing in their academic lives. We can see family engagement in 6 key areas: Welcoming Environment, Effective 2-way Communication, Supporting Student Success, Speaking Up for Every Child, Shared Power, and Decision Making Collaborating with Community

Michael James is a twenty year veteran of public education. Currently the Principal of Jefferson Jr./Sr. High School in Edgewater, Colorado, Michael was also an Assistant Principal and Teacher. Michael has extensive experience in working in Title 1 schools and is known for creating a strong connection with communities and parents. In addition, Michael is a motivational speaker who has spent more than 15 years inspiring youth to be better leaders in their schools and communities.



Tracie Apel serves as an outreach and engagement specialist in the communication services department at Jeffco Public Schools. She works to increase Family, School, and Community Partnerships at the school level and well as with the larger community. A graduate of the University of Colorado, she has accounting, auditing and marketing experience for both corporate and nonprofit organizations.

Meet the Presenters

Sarah Belleau, has over 25 years of experience in the field of education, focusing on instruction and advocacy for children with disabilities. Currently, Sarah is the Director of Integrated Services for Poudre School District, a district of 57 schools/programs and 30,000 students. In the past, she has worked in Colorado and Wyoming. She has a BS in Occupational Therapy (CSU), an MA in Elementary Education and Early Childhood Special Education (UNC), additional graduate studies and endorsements in Severe Needs: Cognitive (UNC); Special Education Leadership (UNC); and Educational Leadership: Principalship (CSU). Sarah has been a therapist, elementary special education teacher, early childhood special education teacher, instructional and behavioral coach, coordinator, assistant director of special education and the director of special education. Participation on state committees is an important commitment and Sarah has served on several committees addressing the state plan, SLD, and finance. In 2012, Sarah was awarded the Employee of Year Award by the City of Fort Collins Commission on Disabilities.

Philip Bernhardt is an Associate Professor of Secondary Education. From July 2013 - August 2017 he served as the founding Chair of the Department of Secondary, K-12 Education and Educational Technology. His professional development interests and expertise include co-teaching, backwards design, performance assessment, effective instructional practices, new teacher mentoring and induction, and supporting middle and high schools establish course placement norms to help students access advanced-level coursework. Dr. Bernhardt has spent almost two decades working in public schools, including eight years as a secondary social studies teacher working in co-taught classrooms. He also has experience as an AVID teacher and has coached soccer and basketball at a number of high schools in the Washington, DC area. Dr. Bernhardt regularly presents at national and regional conferences on topics that include the barriers to higher education, academic tracking, teacher professional development, curriculum design and assessment, teacher education program design and teacher preparation, induction, and mentoring.

Lori Bitar is a visionary thought leader and award-winning education expert in supporting struggling students in academics and behavior. Her company, SOS! Education provides support for those seeking assistance in teaching, training, tutoring, and mentoring. She works with schools, districts, and in classroom settings to support highly engaging, empowering, and effective instruction in best practices for teaching and learning. Lori earned her BA in Psychology and Teacher Education from the University of Illinois and her MS in Reading K-12 from Nova Southeastern University. She has over 27 years of educational experiences in all sectors of the market: private, public, and charter schools. She is a former Disney American teacher nominee, Teacher of the Year, and the proud recipient of a Governor's TOP 100 middle school award.

Mary Bivens is the Director of Educator Development at the Colorado Department of Education. Mary oversees the offices of Educator Effectiveness and Educator Preparation and Development. These offices focus on the continuum of educator development from pre-service to inservice. Supporting districts, BOCES and Educator Preparation Programs to attract, prepare, support, and retain Colorado's educators. Prior to her current work with CDE, Mary focused on supporting districts with implementation of evaluation systems that meet the requirements of state legislation around educator evaluations including leading CDE's Educator Effectiveness Liaison Network with over 30 districts across the state who are focusing on improving their evaluators' skills around observation and feedback to teachers. Before joining the Colorado Department of Education, Mary was an elementary teacher for 14 years prior to becoming a district leader developing a peer evaluation program in one of the state's largest districts.

Rachael Browning is the Director of Special Education in Weld County School District RE-5J. She holds a Master's Degree from the University of Northern Colorado and a Bachelor's Degree from Colorado State University as well as certification in Educational Leadership from the University of Denver. Rachael has served students, staff and families in special education as a teacher, consultant, coordinator, assistant director and director since 1997 both in facilities and public school settings.

Jon Paul Burden is the current Director of Exceptional Student Services for the Weld RE-4 School District in Windsor, Colorado. The 2017-2018 school year is his 10th with the district. Prior to serving Weld RE-4, Jon Paul served the Colorado Department of Education as a Senior Consultant for the Exceptional Student Services Unit, specializing in secondary transition. Prior to the Department of Education, Jon Paul was both a special education teacher and a Teacher on Special Assignment (TOSA) for the Greeley 6 School District. Jon Paul has his Masters of Arts from the University of Northern Colorado in Moderate Needs Special education with additional non-degree licensures in Early Childhood Special Education, Transition Specialist, and Special Education Administration. In his "free" time Jon Paul teaches as an adjunct professor for the University in the special education graduate program. Jon Paul resides in Severance Colorado with his wife and two teenage daughters. Jon Paul also enjoys consulting with school districts and other educational agencies regarding transition focused improvements.



Meet the Presenters

James Chamberlin has served as a central office administrator, high school principal, middle school principal, elementary principal as well as a Spanish and social studies teacher, dean of students, and athletic director over his 27 year career in Colorado public education. Currently, he is the Fraser Valley Elementary principal in the East Grand School District. Additionally, he serves as an adjunct instructor for the MA teacher education program at Adams State University in the areas of assessment, curriculum, instruction, and the psychology of learning. He obtained his BA from the University of Northern Colorado, MA from Adams State College, and Ph.D. from Colorado State University. Dr. Chamberlin has been recognized as Administrator of the Year by Shape Colorado 2015. Fraser Valley Elementary has received the John Irwin School of Excellence award as well as the Governor's Distinguished Improvement awards and a Healthy School Champion Gold Award for 2016.

Sergeant Moses Cho began his police career with Fountain Police Department in 1999. In 2004, he was assigned to the Fountain-Fort Carson School District 8 as the sole School Resource Officer. Sergeant Cho has held numerous specialized assignments with the police department such as Homeland Security Investigation and Federal Human Trafficking Task Forces, Lead Firearms Instructor, Crisis Intervention trainer, Standardize Field Sobriety Test Instructor and Intoxilyzer 9000 Instructor. In 2016, Sergeant Cho had the opportunity to return to the school district as the Sergeant of the SRO unit. Sergeant Cho now leads a team of seven School Resource Officers to ensure the safety of students and staff.

Ceri Dean, PhD, has more than 25 years of experience providing training, coaching, and technical assistance to educators at multiple levels. Prior to establishing Dean Education Consulting in 2016, she served as Senior Fellow and Vice President of Field Services at McREL, participating in McREL's overall management and strategy development and overseeing the development and delivery of McREL's training, technical assistance, and consulting services. She also served as the director of large-scale projects, including REL Pacific and the North Central Comprehensive Center, and managed McREL's role in several national level programs including the U.S. Department of Education's Model Professional Development Awards. She is the author or coauthor of numerous reports, a book on instruction, a school improvement program, and a toolkit for family engagement. She has developed and presented over 300 workshops on a variety of topics, including standards, mathematics teaching, assessment, instructional strategies, leadership, professional development planning and evaluation, and system improvement. Ceri is a former high school mathematics teacher with a B.S. in Atmospheric Science and Mathematics Education (SUNY Albany) and an M.S. in Atmospheric Science (Colorado State University).

Kim Easdon has worked for Harrison School District since 2001 where she began her educational career as a second grade teacher. She has worked at Soaring Eagles as a literacy coach for K-5 and as an assistant principal for seven years. She is currently the Principal of Soaring Eagles Elementary, an award winning school (2009 and 2017 – Blue Ribbon Winner; 2011 – Title I Distinguished School Recipient; 2014 and 2017 – High Achiever's Grant Recipient; 2017-John Irwin School of Excellence). Mrs. Easdon earned her Bachelor of Arts degree in Psychology and her Master of Arts in Curriculum and Instruction from the University of Colorado-Colorado Springs. Her various roles in Harrison include Assessment Coordinator, PLC Facilitator, RtI/MTSS Coordinator, Building Accountability Committee Facilitator, and PTO representative.

Susan Elliott is in her 19th year of Special Education. She has a bachelors in Special Education and a reading endorsement. She is currently in a Master's Program for Mental Health counseling. Her experience includes settings in elementary, middle, and high school. She recently moved from Orlando, Florida to Eagle, Colorado where she is now an instructional coach for the Eagle County School District.

Elizabeth Domangue completed her doctorate at Louisiana State University in the College of Education's Kinesiology Department with an emphasis in pedagogy-achievement motivation theories. Elizabeth has had extensive training in pedagogy, curriculum, assessment and evaluation, coupled with various teaching experiences (i.e., K-12, college, international for English Language Learners, non-school settings such as summer and after-school programs). She has six publications in peer-reviewed education journals and has presented at 16 national education conferences. Dr. Domangue is currently the proud Principal of Panorama Middle School in Harrison School District Two. She is committed to being an educational thought leader who works collaboratively to develop a school culture that is rigorous academically, socially and emotionally safe, and innovative--meeting the changing needs of our students and the world. Dr. Domangue believes that access to an excellent learning experience is a civil right.

Mary Anne Fleury is currently the Early Dispute Resolution Specialist in the Exceptional Student Services Unit at CDE. Previously, she was an MTSS Implementation Consultant for the Office of Learning Supports part-time, as well as an instructor at the University of Northern Colorado. She was the Director of Exceptional Student Services for 7 years in the Lewis-Palmer School District, and prior to that, was a special education and general education teacher. Her passion for facilitation work began in 1995, when she founded and directed a non-profit organization that provided education, information, and advocacy for parents and educators of children with disabilities. She has sat on all sides of the table, as an educator, parent of a child with disabilities, advocate, and administrator, and her current role has brought her full circle to a main passion in her career. Currently, she is finishing her Ph.D. at UNC in Special Education with a minor in Educational Leadership, focusing on MTSS.

Meet the Presenters



Steve Foster is a 7th grade teacher and subject lead at McAuliffe International School. Endorsed in linguistically diverse education. English Language Acquisition and Social studies teacher. Program Coordinator for Spanish4educators, which offers Spanish language and cultural immersion opportunity each summer in Guatemala specifically for educators.

Maria Elena Garcia - M.A., is the founder of M.E. Garcia Educational Consulting, Inc., a Colorado licensed K-12 principal and teacher; former managing consultant in the Center for Systems Transformation at McREL International; school improvement specialist/manager (Educational Service District in Washington State); school district federal projects manager, middle school assistant principal, extended day high school principal; science and math program coordinator; teacher. Over 15 years consulting in state, national and international levels and conducted more than 150 consultative and training sessions in such topics as comprehensive continuous improvement planning, leadership development, data use, research based instruction, culturally responsive education, English language development, equitable learning opportunities, family and community engagement. Co-author of a Toolkit of Resources for Engaging Family and Community as Partners in Education (2016), an IES peer-reviewed publication focused on strengthening partnerships with families and community members to support student learning. Currently serves on the Colorado State Review Panel tasked with reviewing schools' turnaround and priority plans.

Caroline Gaudiani attended Harvard University and graduated in 2003 with a degree in English and American Literature and Language. She then joined New York City Teaching Fellows, teaching English in a high school in Brooklyn while getting her Masters in Teaching at Pace University. She attended Stanford University's Graduate School of Business, completing her MBA in 2008. She then served as a teacher and administrator at KIPP: Bayview Academy for two years before moving to Denver to become an assistant principal at Montbello High School. When she joined Montbello High School it was beginning a major turnaround effort that Caroline was excited to join, however, within 3 months of her beginning there, the political landscape changed and it was announced that Montbello would be a phase out school instead. Caroline committed to seeing the, then freshmen, class of 2014 through to their graduation, as she felt passionately that she didn't want this last group of Montbello students to be left behind. Then, inspired by DSST: Green Valley Ranch High School's success in the same community, and by the promise of joining a deeply values-driven culture, she joined DSST as a School Director in Training.

Julie Goldberg, Director of Special Education, Eagle County Schools. Graduated California State University, San Marcos with B.A. in Education Specializing in Special Education and Minor in Spanish and Autism Specialist Certification. Worked in Poway Unified School District as a Special Educator until relocating to Colorado. Worked as a Special Educator, English Language Learner Teacher and taught Spanish to English speakers in Eagle County Schools. Received Masters in Educational Leadership and received Principal and Special Education Director licensure. Adjunct Professor at Colorado Mountain College, Assistant Special Education Director at Mountain BOCES for a few years then Director of Special Education at Roaring Fork Schools for over 5 years until returning to Eagle County Schools and serving as Assistant Director and presently Director of Special Education.

Vicki Graham is a supervisor for the Fiscal and Operations Team in the Exceptional Student Services Unit (ESSU) of the Colorado Department of Education (CDE). Vicki supports the fiscal work of administering the Federal Individuals with Disabilities Education Act, the State Exceptional Children's Educational Act and the Special Education Fiscal Advisory Committee (SEFAC), which distributes \$4 million in state funding for special Education. Vicki has participated in presenting several fiscal conferences, webinars and on-site technical assistance visits for directors of special education, as well as, fiscal and business personnel in Administrative Units (AU) across the state. Vicki enjoys providing technical assistance to AUs around fiscal issues such as Maintenance of Effort, allocations, allowable uses and Coordinated Early Intervening Services. Vicki has both state level and district level perspectives in her 16 years of experience between CDE and Jefferson County Public Schools (Jeffco). Vicki has been with the CDE for 8 years. Prior to joining CDE, Vicki worked for 8 years at Jeffco where she spent 4 years working in accounting and an additional 4 years in grants accounting, with a focus on Title I.

Christine Hendricks has been the principal at Tavelli for 8 years. Prior to moving to Fort Collins she was a principal and teacher in Wyoming for 22 years. Christine has a Masters in Educational Administration from the University of Wyoming. Tavelli is a STEAM focused school which celebrates diversity and wellness. The Colorado Department of Education has recognized Tavelli as a High Achieving school through data driven instruction, assessment capable learners and targeted interventions and enrichments. Tavelli received the John Irwin School of Excellence and Governor's Distinguished Improvement in 2016.

Meet the Presenters

Fran Herbert is the Results Driven Accountability supervisor in the Exceptional Student Services Unit at the Colorado Department of Education (CDE). She has participated in developing the “Culturally and/or Linguistically Diverse (CLD) Resource Toolkit” at the CDE a resource to help prevent disproportionate representation of minorities in special education. Fran is a Speech Pathologist who has worked in both the clinical and educational fields with a focus on bilingual speech and language development. She has provided numerous trainings on a state and national level on the appropriate referral and evaluation of culturally and/or linguistically diverse students who may have exceptional needs, as well as trainings in support of para-educators. Fran Herbert is the Results Driven Accountability supervisor in the Exceptional Student Services Unit at the Colorado Department of Education (CDE). She has participated in developing the “Culturally and/or Linguistically Diverse (CLD) Resource Toolkit” at the CDE a resource to help prevent disproportionate representation of minorities in special education. Fran is a Speech Pathologist who has worked in both the clinical and educational fields with a focus on bilingual speech and language development. She has provided numerous trainings on a state and national level on the appropriate referral and evaluation of culturally and/or linguistically diverse students who may have exceptional needs, as well as trainings in support of para-educators.

Laura Hess is the Executive Director of Special Education at St. Vrain Valley Schools. Laura is in the second year at St. Vrain Valley and previously has worked in the Chicago area as a Special Education Director, Coordinator and Educator as well as an educator Southern California. Ms. Hess holds a MA in School Leadership from Concordia University and a MA in Curriculum and Instruction from California State University as well as a teaching credential in Moderate/Severe Disabilities from National University in La Jolla, CA.

Jill Heil is a native Coloradan who has been teaching English Language Development at Summit High School, in Breckenridge, CO for 12 years. Prior to that she taught at Colorado Mountain College. She is certified in English Secondary Education and has a masters in Culturally and Linguistically Diverse Education. Additionally, she is co-teaching Algebra I, coaching and department head serving on the Leadership Team.



Londi Howard works as the School Psychology Intern for the CDE's Exceptional Student Services Unit's. Her role as the Intensive Supports Coordinator provides communication, technical assistance, and support to school based mental health professionals across the state. She is currently enrolled in the Child, Family, and School Psychology (CFSP) program as a Doctoral student at the University of Denver. Prior to her time in Colorado she worked as a community director for 13 years with U.S. Military and International students in Germany, the United Kingdom, Belgium, and Malaysia. Her current focus is on transient lifestyles, and how they affect students with high and low incidence disabilities' social-emotional outcomes.

Linnea Hulshof earned her Master's degree in Curriculum and Instruction through the Boettcher Teachers Program in partnership with the University of Denver, where she is now pursuing a doctoral degree in Curriculum and Instruction as well. She spent ten years working as a classroom teacher where she developed a passion for Expeditionary Learning and gained extensive experience working in the primary grades. Her love for travel and adventure then took her overseas where she worked for five years in an international setting in schools in both Indonesia and Venezuela. Her past experiences with AmeriCorps and Peace Corps reflect her enthusiasm for service and her desire to contribute to the community. Now she is part of the Office of Culturally and Linguistically Diverse Education at the Colorado Department of Education where she works as the English Language Proficiency Act Coordinator.

Darcy Hutchins, Ph.D., is the Family Partnership Director for the Colorado Department of Education (CDE). She provides support to districts to increase family engagement, particularly through parent participant on school and district accountability committees. She also staffs the State Advisory Council for Parent Involvement in Education (SACPIE).

Miki Imura is a Supervisor of data accountability and achievement in the Colorado Department of Education, Exceptional Student Services Unit. In her role, she supervises special education data collections, works with internal and external data inquiries, and reports to U.S. Department of Education Office of Special Education Programs (OSEP) with Colorado's data regarding students in special education. Miki is part of the results driven accountability team, supporting the administrative units with their transition to the academic-results-based programming in special education. Miki received a Ph.D. from the University of Oklahoma with concentration on social psychology and statistics.

Meet the Presenters

Stephanie Johnson is the English Language Coordinator for Lewis Palmer School District in Monument, CO. She is in her ninth year as Coordinator and has 21 years in education spanning K-Higher Education. She has a doctorate in Education and a master's degree in Human Behavior and another in Counseling Psychology. She is an EL herself with German as her other language.

Laura Jones MA, NCC a licensed school counselor, nationally certified counselor, past expeditionary learning instructor and past Statewide Outreach Coordinator for Colorado's free guidance website: [CollegelnColorado](http://CollegelnColorado.com). Currently, she is the Career & Technical Education (CTE) Program Director for Special Populations, Counseling and Equity with the Colorado Community College System (CCCS), serving k-12 school districts and postsecondary institutions by providing trainings that help support the implementation of comprehensive career guidance, equity & inclusivity of programming and collaborative efforts that parallel Colorado's education initiatives that support Career Literacy and Meaningful Career Conversations.

Karen Kendig is a Gifted Education Specialist at the Colorado Department of Education. She is the primary facilitator for statewide professional development in "Engaging Student Thinking through the Depth and Complexity Framework". Her expertise is grounded in over 30 years working with gifted students and families. She has experienced many years of successful classroom instruction and assessment in gifted programs, as well as experience as a regional consultant. In this role she has helped districts development and implement quality gifted programming. Currently, Karen also serves as the Coordinator for Gifted Education in the Elizabeth School District.

Emily Kielmeyer BA, MA Ed, is the School Readiness and P-3 Manager with the Office of Early Learning and School Readiness at CDE. Prior to joining CDE, Emily taught kindergarten and also had experience teaching 1st grade and preschool. Emily took on this roll outside of the classroom to have a greater impact on Colorado kids and teachers. She believes that best part of her job is working with and supporting the many outstanding educators across the state, while advocating for what is best for kids.

Erin Loften works in the Improvement Planning office at CDE. She supports districts, schools and various educational stakeholders in continuous improvement processes and meeting accountability expectations through planning. She has worked in schools, non-profits and higher education and has a master's degree in Ed Psych-Research and Evaluation. Her passions are finding ways to connect work that is valuable to stakeholders and making planning work meaningful.

Kasey Lynch is the Dean of School Culture at Ellis Elementary School. In her time in education, she has served as a 2nd and 3rd grade classroom teacher. She obtained my Master's Degree from the University of Colorado - Denver in Urban Education: Curriculum and Instruction Design, and she obtained a certificate in Professional Project Management, which helped prepare her with the skills and tools necessary for her current role. Kasey's entire career in education has been in Title I, low-income schools, serving diverse populations of people, from Hispanic/Latino, to African American, Hmong, and Somali.

Eileen Maresca is an Instructional Program Consultant and District Assessment Team member with the St. Vrain Valley Schools, Special Education Department. After spending fifteen years as a Special Education Teacher and ten years as an ESL Specialist, Eileen understands the importance of making thoughtful decisions regarding language difference vs. disability. Eileen has been involved in developing district professional development related to; Sheltered Instruction Observation Protocol (SIOP), how to develop language and literacy skills for preschool students who are dual language learners (DLLs), and CLD Factors and the Special Education Referral Process. Eileen aided in developing a thorough Special Education referral process for the district that is being implemented this school year. Eileen holds a BA from the University of Northern Colorado in Special Education and a MA from the University of Colorado in Education, Equity, and Cultural Diversity.

Dianne Maroney, RN, MSN is the Executive Director of The Imagine Project, Inc. She received her Master in Psychiatric/Mental Health Nursing from the University of Colorado Health Science Center. Dianne founded The Imagine Project after working with children and teens in her private practice in Denver, and then creating an avenue for kids to heal from the emotional impact of stress and trauma. Dianne has traveled across the country reading and hearing the powerful stories of all types of children, attaining an important insights into the psyche of our kids today. She is an international speaker and has written multiple award winning books including, The Imagine Project: Helping Parents, Teachers & Kids Cope with Drama, Trauma, & Stress (Yampa Valley Publishing, August 2017).

Judith Martinez is the Director of Dropout Prevention and Student Re-engagement at CDE. Her work is dedicated to reducing Colorado's dropout rate and increasing credential attainment. This work involves analyzing trends in education data, supporting best practices and seeking viable options for all students, especially those who face unique challenges and barriers. Prior to joining CDE, she was the Director of the National Center for School Engagement and Deputy Director of Family and Community Education and Support, a nonprofit group committed to positive parenting and prevention of child abuse and neglect. Judith is a Denver native. She received her high school diploma, Bachelor of Arts and master's degree from Colorado institutions. In August, she completed 10 years at CDE and recently received the 2017 Alumni Appreciation Award from CU in the City for her work in education.

Meet the Presenters



John McKay has a bachelors and masters in social work and started his career working for social services in Wichita Kansas. He started his career in education as a school social worker in a middle school. Since then, he has worked as a middle school counselor, soccer coach, developed a alternative online high school, high school soccer coach, assistant principal of two elementaries, director of state and federal programs, high school principal, and currently works as the director of Language, Culture, and Equity for Poudre School District. He is a proud father of twin 5th graders.

Jacquelin Medina is the State Director for Gifted Education. Her long-term career expands general education and administration, as well as over 30 years serving the needs of gifted students, families, and educators. Jacquelin leads efforts in Colorado for continuous improvement in the recognition and programming for students with exceptional potential.

Maureen Melonis, MNS, CCC-SLP/L, is Director of Assistive Technology Partners. She is also a Senior Research Instructor and Assistive Technology Specialist in the Departments of Physical Medicine and Rehabilitation, Bioengineering and Pediatrics at the University of Colorado Denver | Anschutz Medical Campus. Ms. Melonis serves as an assistive technology consultant to the Colorado Department of Education, Exceptional Student Services Leadership Unit and serves as Principal Investigator for early intervention and assistive technology services in the state. She earned her Master's degree from Arizona State University as a Speech-Language Pathologist, and worked in private practice, public schools and multi-site preschool networks before joining the University in 1998. In her role at the University, Ms. Melonis has developed numerous training curriculums around assistive technology, adult learning strategies and curriculum development. Her technology development and application research has focused on language development and augmentative and alternative communication (AAC) as well as early childhood. Ms. Melonis has presented at state, national and international conferences on assistive technology and has published numerous resources in the field.

Nazanin Mohajeri-Nelson is the director of the Data, Program Evaluation, and Reporting Office in the Colorado Department of Education's Unit of Federal Program Administration. In 2006, she earned her Philosophy of Doctorate degree from the Colorado State University in Applied Social Psychology with an emphasis in lifespan development and program evaluation. She received her NIMH-funded postdoctoral research training at the University of Minnesota, Institute of Child Development, where her focus was on evaluating the effectiveness of school-based interventions. Currently she oversees the office responsible for federal accountability, program evaluation of federally-funded programs, and meeting federal reporting requirements.

Amy Moore (MA, CCC-SLP) is a speech-language pathologist in St. Vrain Valley. She delivers services in both Spanish and English with the goal of developing and supporting academic language skills for the PK-5 students that she serves. She has been exploring issues around distinguishing language impairment from language difference as a clinician for several years. She is excited to have the opportunity to work with this team to develop a process to use evidence-based methods to account for language difference when evaluating ELLs for special education.

Bernadette Musetti, PhD. is currently Associate Professor and Director of Liberal Studies at Loyola Marymount University in Los Angeles. Bernadette has devoted her career to working with in-service and pre-service teachers to better meet the needs of students in diverse classrooms, which has included an extensive focus on English Learners, differentiating instruction, and designing curriculum. She earned her BA degree in history at Mills College, her MA in TESOL--Teaching English to Speakers of Other Languages at the Monterey Institute of International Studies, and a PhD in Curriculum & Instruction: Language, Literacy & Culture at the University of California Davis.

Kristin Myers, MA, LPCC, Licensed School Counselor, is the State Coordinator for Foster Care Education at the Colorado Department of Education. She is also a doctoral student at the University of Northern Colorado in the Counselor Education and Supervision program. In addition to her work at CDE, Kristin is working on her dissertation on foster care education. Kristin worked as a school counselor for 10 years prior to seeking her doctorate, and has significant experience in working with students with disabilities.

Michelle Nay is the Family Liaison for Special Education for Lewis Palmer School District. She started this position in 2010. Her educational background is a Master's Degree in Education from George Mason University and a Bachelor's of Arts from Haverford College.

Robert Mitchell is an Assistant Professor in the College of Education at the University of Colorado Colorado Springs. He has previously taught in numerous levels of education, being a classroom teacher in the elementary, middle and high school levels. Prior to joining UCCS, Robert was the Director of Educator Preparation at the Colorado Department of Higher Education.

Meet the Presenters

Akudo Nwokeukwu is the Community Outreach Coordinator at Place Bridge Academy. Along with her role at Place Bridge, Akudo has worked in Denver Public Schools as a School of Choice Liaison, engaging families in the district's school choice process. She has a Masters in Public Administration from the University of Colorado at Denver.

Colleen O'Neil serves as the Executive Director of the Educator Talent Unit at the Colorado Department of Education. The unit encompasses the offices of educator preparation and development, educator licensing and enforcement, and educator effectiveness. Colleen holds her teacher, principal and superintendent license in the state of Colorado. Prior to her current work with CDE, Colleen was the director of curriculum, career and technical education for the South Dakota Department of Education where she facilitated the work of three offices and worked with the Secretary of Education and Governor's Office. Colleen also worked at Greeley-Evans School District as the chief human resource officer, an elementary school administrator and the director of strategic planning. She has also served as project manager and assessment specialist for CDE, chief learning officer for an eLearning company and a middle and high school English teacher and coach.

Shannon Peterson started her educational career as a reading interventionist in Denver, and has worked in Eagle County School district for the past 13 years. Shannon has experiences as a second grade teacher, special education teacher, and instructional coach. She has a master's degree in culturally and linguistically diverse education and special education.

Andrea Pulskamp is the Senior Project Manager at The Colorado Education Initiative overseeing Colorado Healthy Schools Smart Source, an assessment and reporting system of school health policies and practices. Andrea has overseen the development and implementation of numerous data collection efforts related to health in schools including the Healthy Kids Colorado Survey/YRBS and CDC's School Health Profiles and has a passion for working with schools to use their health and wellness data to identify needs and inform action. Andrea has a master's degree in public administration from the University of Colorado-Denver and a bachelor's degree in anthropology from the University of Colorado-Boulder.

Megan Quitter is Project Coordinator at the Colorado Center for Rural Education at the University of Northern Colorado. Megan earned her M.A. in Ed Psych at the University of Colorado at Denver and her B.A. at Southern Illinois University at Carbondale. She has been an elementary school teacher, Director of Education at Wings Over the Rockies, and Rural Education Outreach Coordinator at Western State University where she developed partnerships between institutions of higher education, alternative educator licensure providers, and the Colorado Department of Higher Education.

Michael Ramirez, M.A., Supervisor, General Supervision and Monitoring, Exceptional Student Services Unit. Since coming to Colorado Department of Education in, January 2000, Michael provided leadership and support regarding: Approved Facilities, Response to Intervention, Multi-Tiered Systems of Support (MTSS), Positive Behavioral Interventions and Supports, and Special Education. Presently, Michael is a student at the University of Colorado, Denver, where he is completing a Doctor of Education, Leadership for Educational Equity (EdD) degree. Prior to working at CDE, Michael worked in one eligible facility for over 15 years. There he created, developed, promoted and provided administrative leadership in a school for at-risk youth. His unique background situates him as a cross-system's thinker and collaborator. During his tenure at CDE, Michael has provided trainings, technical assistance and consultation on various topics, including: practices for effective behavior supports, Special Education guidance documents, implementation science and the development of a MTSS.

Dennis Rastatter has 22 years of experience in education. 17 of those years have been dedicated to working on behalf of people with disabilities. Currently, Dennis is the Executive Director of Special Education for the Boulder Valley School District. He has a BS in Special Education from the Pennsylvania State University and a MA in Special Education from the University of Northern Colorado. In the past Dennis has worked in the Thompson School District where he served as The Director of Student Support Services and the Director of Student Outreach. Dennis lives in Estes Park with his two teenage sons.

Frank Reeves has been an educator for 28 years in Nebraska, Wyoming and Colorado. He taught social studies for 16 years, was a high school principal for 7 years and in 2012 he became the Superintendent of Genoa-Hugo School District in Hugo, CO. Genoa-Hugo is a very small district of approximately 175 students. During his tenure there Genoa-Hugo was recognized as one of only two rural districts in Colorado to close achievement gaps while raising scores in all categories of state testing. Frank is now in his second year as the Superintendent of East Grand School District in Granby, Colorado. This year East Grand School District was recognized as Accredited with Distinction for the first time.

Lori Reinsvold is Co-Director of the Colorado Center for Rural Education and Acting Director of the Mathematics and Science Teaching Institute (MAST) at the University of Northern Colorado. She holds a doctorate in Educational Psychology from UNC, a M.S. and B.S. from Purdue in biology and chemistry, and has taught K-12 teachers, undergraduates, and graduate students in Indiana and Colorado. Her research focuses on power relations between educators and students, and how the discourse interactions support student understanding of science. The author of numerous journal publications, Dr. Reinsvold has been the recipient of a number of federal, state, and private grants. She is Co-Principal Investigator on a 5-year, \$2.2 million grant, Supporting Rural Educator Recruitment and Retention, from the Colorado Department of Higher Education.

Meet the Presenters

Rob Reinsvold is an Associate Professor in the School of Biological Sciences and Co-Director of the Colorado Center for Rural Education at the University of Northern Colorado. He earned his Ph.D. in forest biology at Purdue University, his M.S. at Colorado State University and his B.A. at Humboldt State. Author of more than two dozen peer-reviewed research publications, Dr. Reinsvold is a Teaching and Learning Faculty Fellow with Center for the Enhancement of Teaching and Learning at UNC. He is currently serving as Co-Principal Investigator on the Supporting Rural Educator Recruitment and Retention grant.

Dana Reynolds is joining ESD from California where she has been a Special Education Teacher, Interventions Specialist and Program Specialist.. Her career of 17 years has covered grades K-9 in Mild to Moderate disabilities. She has an endorsements in Autism, English Language Learners and a Masters in Instructional Leadership.

Mindy Roden currently serves as the Special Education Assessment Consultant for the Assessment Unit at the Colorado Department of Education. Mindy brought 25 years of diverse special education experience to her current role at the Department of Education. She has worked as a classroom teacher for students with various disabilities including Autism, Specific Learning Disabilities, Intellectual Disabilities, and Serious Emotional Disabilities. Mindy has also served as a district special education administrator and a researcher and consultant for the University of Kentucky and edCount where she specialized in alternate assessment for students with the most significant cognitive disabilities. Mindy moved to Colorado in 2009 and earned her PhD in Special Education from the University of Illinois in 2010.

Montina Romero, Ph.D. is the Assistant Superintendent of Student Support Services in Fountain-Fort Carson School District 8(FFC8). She has served in public education for 21 years, 7 as an elementary teacher, 3 years as a school psychologist, and the last 11 years as a district administrator. For the past two years, Dr. Romero has been responsible for FFC8's safety and security initiative to include partnerships with local law enforcement. Her desire is to eliminate silos and to build collaborative cultures that support the whole child. She has worked closely with the Colorado Department of Education on Response to Intervention and Multi-Tiered Systems of Support practices. Additionally, she is identified as a leader in special education across Colorado.



Kristy Roome is a District School Psychologist and District Assessment Team member at St. Vrain Valley School District. She has over 8 years experience as a school psychologist, and has worked in districts in Colorado and central New York State. In the last year, Kristy aided in developing a thorough Special Education Referral process in SVVSD and is also part of a district team working towards increasing cultural competence in ELL assessment practices for Special Education evaluations. Kristy holds a BS from Cornell University in Human Development and a MS/Certificate of Advanced Study (Ed.S) from The University at Albany/SUNY in Educational Psychology and Methodology, and School Psychology. She is a Nationally Certified School Psychologist.

Harvery Rude is the Director of the Colorado Center for Rural Education, former Executive Director of the Bresnahan-Halstead Center, and Professor Emeritus in the College of Education and Behavioral Sciences at the University of Northern Colorado. Dr. Rude holds his Ed.D. and M.A. from UNC and a B.S. from Minnesota State University. Since 1980, Dr. Rude has held a variety of positions at UNC, including Director of the School of Special Education and Associate Dean of the College of Education. Widely sought as a presenter and consultant, Dr. Rude has authored or co-authored over 100 publications. He has presented throughout the continental and non-contiguous United States and in such diverse locales as Saudi Arabia, Lithuania, China, Thailand, Canada, Taiwan, Germany, and Australia. He has served as professional consultant and advisor to universities in Saudi Arabia and China and to the Thailand Commission on Higher Education. Since 2014, he has served on the Bureau of Indian Affairs Education Advisory Board. Dr. Rude's research interests include teacher leadership, teacher quality, innovation in distance education, and culturally responsive systems.

Remy Rummel, M.Ed. has worked for 20 years in the field of education. Ms. Rummel has experience with learners in grades K-20 as a classroom teacher, instructor, literacy, and ELD specialist. Ms. Rummel is currently the English Language Development Coordinator for Douglas County School District, and she is a doctoral student at the Denver campus of the University of Colorado.

Corporal Matthew Sanchez is a patrol officer with the City of Fountain Police Department. He performs the duties of responding to calls for service, enforcement of traffic regulations and laws, and is currently a School Resource Officer for Fountain-Fort Carson School District 8. Corporal Sanchez has been a sworn Police Officer since July 2013. He is certified as a Standard Field Sobriety Test (SFST) Officer and an Advanced Roadside Impaired Driving Enforcement (ARIDE) Officer. Corporal Sanchez graduated in January 2012 with a bachelor degree in Criminology from Colorado State University-Pueblo and graduated from the Pueblo Law Enforcement Academy in 2013.

Meet the Presenters

Tim Sanford is a speech therapist with St Vrain Valley Schools' District Assessment Team. His primary roles have been to help building teams examine intervention and/or evaluation plans for students who are English Learners as well as carrying out communication assessments. For several years he was also Elementary Bilingual Coordinator. Realization of learning needs happened for him when a 3rd grade child from a class in which he was volunteering stated "Oh I can't read".

Patti Schmitt has worked in the non-profit field in Larimer County for 20 years as a leadership and civic engagement professional. She currently is the Family Leadership Training Institute (FLTI) of Colorado Assistant State Project Coordinator with Colorado State University Extension in the State Office. Her work involves; providing technical assistance to FLTI sites around the state, creating tools and trainings to support community leadership, and facilitating state-wide groups to support the success of the 11 family leadership sites in Colorado. Prior to Patti's state role with FLTI, she was the Larimer County FLTI Site Coordinator. Serving in this role, she lead a coalition of partners to create the first two-generation FLTI site in the nation in Larimer County and was instrumental in co-developing a youth leadership and civic engagement curriculum. Furthermore, Patti grew the diversity and number of community members who apply to this program every year and now this program has a waiting list of people who want to sign up for a 20 week leadership and civic engagement program.

Emily Scott works currently as a special education administrative coordinator in St. Vrain Valley Schools. Emily holds a BS in Education, a Masters in Occupational Therapy and a Certificate in Educational Leadership. It was through her work as an occupational therapist, that she has always looked to remove the barriers that may be in the way of her clients and students. Through education, compensation or adaptation, Emily has helped many clients overcome the obstacles they have faced. Emily has worked in many settings which include home health, hospitals, outpatient settings, and universities; however, the school system draws her back to combine that love of teaching with finding a solution to whatever barrier a student may have to learning.

Jennifer Sedaghat is the Coordinator for Exceptional Student Services in the Weld Re4 School District in Windsor, Colorado. She works directly underneath the Director of Exceptional Student Services and one of her main roles is to insure Indicator 13 compliance for all secondary IEPs. Prior to her current role in Windsor, Jennifer was the Transition Specialist for Weld County School District 6 in Greeley, Colorado. When not busy working within the schools in her district, Jennifer is also the Colorado Council for Exceptional Children Past President, the Colorado DCDT Past President, and the current Courage to Risk Conference Presenter Chair. Jennifer enjoys consulting and presenting on transition related topics at various state, regional and national conferences. In her free time, Jennifer enjoys spending quality time with her husband and three beautiful children.

Missy Sieders, the loving mom of a daughter with a disability, works at PEAK Parent Center as a Parent Advisor & Early Dispute Resolution Project Coordinator. She uses her advocacy knowledge and skills to help other families learn how to get the supports and services their children need to be successful in school and in life. Missy has more than a decade of experience in project management, marketing, course development, communications, organizational development, performance consulting, training delivery, and human resources. Missy's broad organizational development and consulting skills include communications, meeting and group facilitation, assessment, employee and executive development, classroom and virtual delivery, coaching, 360° feedback, competency models, change management, and process/systems analysis. Missy completed post-graduate work in human resource development at Webster University and graduated with high honors from Michigan State University with a bachelor of science degree in industrial engineering.

Tara Smith, the Two Generation Program Coordinator for the Office of Governor John Hickenlooper, is helping coordinate and expand the statewide adoption of 2Gen approaches in Colorado. Through the Parents and Children Thriving Together (PACTT) Two Generation State Policy Network initiative, she is working with representatives from state and local government and other partners to embed 2Gen across programs, policies, organizations, and systems to ensure Colorado parents and children are valued, healthy, and thriving. Prior to joining the Governor's Office, Ms. Smith was actively involved in efforts to reform the state's health care system. She most recently served as the Strategy and Policy Manager for the Colorado State Innovation Model (SIM), a 4-year, \$65 million initiative aimed at transforming health care delivery and payment structures through the integration of physical and behavioral health. Before joining SIM, she worked to improve Coloradans access to health care, assisting with the implementation of the ACA's health insurance marketplace reforms as a Rate Analyst at the Colorado Division of Insurance. Ms. Smith received an MA in Medical Anthropology from the University of Colorado-Denver, and a BS in International Politics with a concentration in Science and Technology in International Affairs from Georgetown University.

Lisa Steffen works at the Colorado Department of Education as a Project Coordinator for the Improvement Planning Unit. She has a Bachelor's Degree from UC San Diego and a Master's degree in Public Policy from the CU Denver. She serves on the public policy council of Junior League of Denver, and has served on the board of directors for the Young Education Professionals.

Meet the Presenters

Natasha Langjahr Straayer, M.Ed. has worked in education for over twenty years as a classroom teacher, literacy interventionist, gifted education facilitator, professional developer, and district coordinator for gifted education. She currently serves as a Director of Educational Programming for Douglas County School District in Colorado. Ms. Straayer holds her master's degree in Curriculum and Instruction from Lesley University, Cambridge, MA, and a bachelor's degree in both English Literature and Education from Bradley University, Peoria, IL.

Joyce Thiessen-Barrett is currently the Coordinator of Family-School Partnering for the Exceptional Student Services Unit at the Colorado Department of Education. Before working at the Colorado Department of Education, she was a classroom teacher in Nova Scotia Canada, Colorado, and Montgomery County Schools, in Maryland before moving back to her home state of Kansas. After moving to Kansas, Joyce spent 29 years serving in the public schools as a teacher, a Director of Gifted Education and a Special Education Director. Joyce's educational background includes degrees and advanced study in Education and Sociology, Educational Psychology, Educational Leadership, and Special Education Administration.

Barbara Vassis brings a fiscal lens and a programmatic lens to the Federal Programs Unit's Office of Data, Program Evaluation and Reporting (DPER) at CDE. She gained these perspectives through nearly a decade at CDE in the offices of ESEA Programs and Grants Fiscal Management prior to transitioning to DPER, as well as from district-level grant administration and non-profit grant writing.

Jocelyn Walters is the Special Education Director of Centennial BOCES. She has served as the director for the past seven years. She began her career in the field of special education servings as a school psychologist. Jocelyn takes a systems approach to the field of special education and has facilitated training for RtI, PBIS, and Healthy Systems. She is applying approaches from a system framework to ensure all parents experience meaningful parent participation across the administrative unit.

Julia Wigert Ed.S., NCSP, is the School Psychology Specialist for the Exceptional Student Services Unit at the Colorado Department of Education. As School Psychology Specialist at CDE, she provides statewide leadership in the areas of school mental health, Serious Emotional Disability (SED), and professional competencies of school psychologists. She has experience working in schools implementing Response to Intervention, Positive Behavior Intervention and Supports (PBIS) and spent five years primarily serving students with Serious Emotional Disabilities (SED) in center programs and in general education settings. In addition she has served on the Colorado Society of School Psychologists (CSSP) board and is this year's CSSP President-Elect.

Ann-Mari Westerhoff is an English Language Development coach and co-teacher at Upper Blue Elementary School in Summit RE-1. She has been in this role for 11 years and active in the education of Language Learners from K-Adult for 24 years. She has a Masters in Multicultural Elementary Education and is currently studying for a certificate in Educational Leadership.

Heather Wilson is the co-founder of School Deets. Before leaving the classroom, she was a bilingual instructor in Denver Public Schools. She and her co-founder, elementary school teacher Anna Kuvler-Fensler, were both working moms, juggling their passion for education with the realities of parenting. Along with preschool pick up and drop off, they had Girl Scouts, coached sports teams, all while trying to keep up with everything going on their kids' classrooms. Despite their experience in the system as teachers, managing information from so many different sources got to be overwhelming. Heather realized it likely was even more difficult for someone who did not speak English. So, School Deets was born: a single platform that provides the information parents want in the language they need. Heather and Anna also are running buddies, having trained together for half marathons and a triathlon. Their mantra, whether running a race or building a company, is to enjoy the journey.

Lisa Zimprich, Ed.S. has spent the last 11 years of her career working in Fountain-Fort Carson School District 8 (FFC8), initially as a school psychologist and currently as the Assistant Director of Student Support Services. Ms. Zimprich leads the district mental health team of over 35 school psychologists, counselors, and social workers, and is responsible for mental health service delivery, risk assessments, and crisis response and postvention services for the school district. Her leadership has helped FFC8 become a model for school mental and behavioral health supports and programming across the state. She has a passion for developing systems that proactively identify needs for students and families and addressing those needs with evidence-based, collaborative solutions.



Meet the Exhibitors

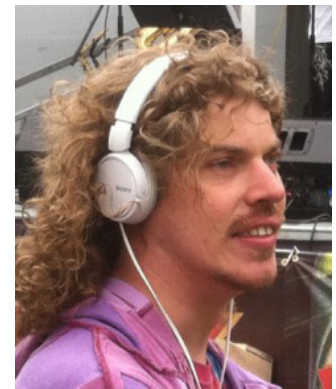


Jake Dion, Artist

As a self-taught artist with autism, Jake Dion is passionate about animals-especially elephants, volunteering at the zoo, gardening in his own yard and his art. Jake's detailed drawings are renderings of animals and things that touch his heart. His drawings have a distinctive detail and texture about them. The texture comes from difficulty regulating pressure in his hand, but leads to a multi-dimensional effect that people enjoy. Jake calls himself a "Surgeon Artist" because he likes to fix the animals he draws. Broken tusks and torn ears are restored. He feels like he is helping the animals by mending them. Be sure to see more of Jake's work on his website at <http://www.jakedionartist.com/>.

Chris Patton, Lopsided Heart Creations

Chris Patton is a poet, and lines from his poetry appear on the t-shirts that he makes and sells through his business, Lopsided Heart Creations. In 2005, as a high school senior, Chris teamed with Youthbiz, a local non-profit, to create silk-screened t-shirts. His classmates helped select lines from his poetry and 16 of them became Chris' first t-shirt creations. He was the first self-employed person with a disability to receive start-up funding through the Denver Department of Vocational Rehabilitation. Since that time, Chris has sold his products at educational conferences, local arts festivals, and through his website, www.lopsidedheartcreations.com. Though Chris speaks very little verbally, he uses a variety of keyboards to communicate his thoughts. It is his greatest desire to use his words and unique voice to create positive change and make an impact on our world.



Candice Reeves, Candesign

Candice Reeves is a 31 year old young woman who is kind loving and warm. She has a syndrome called 13Q- which is a deletion in the long arm of the 13th chromosome. She is a joy to be around, and has touched so many lives in a positive way. Candice loves horseback riding, dancing, plays, live performances, hiking, parties and making beaded jewelry and art. Candice loves shopping for beads, and never makes two items alike. She enjoys sharing her craft, and is a wonderful sales person helping individuals chose which item to purchase.

Rob Schaffner, Be Cool Company

Rob Schaffner lives in Colorado Springs, Colorado. He graduated from Rampart High School in 1992 with honors, excelled in his Marketing Class, and was a member of the Rampart marching band, percussion section. He enjoys playing basketball and softball and is a loyal fan of the Colorado Rockies, the Denver Broncos and the Air force Academy football team. He is a long-time member of a regular Saturday night bowling league. After high school, Rob worked for 15 years at a local grocery store. He and his dad, Bob Schaffner, then began creating natural stone home and office products, and in 2009, Rob started his "Be Cool Company." Rob gets his inspiration for his products from nature, especially the Garden of the Gods and other natural rock formations.. He started by creating unique stone business card and cell phone holders and later his inventory grew to include decorative stone kitchen and home products, including coasters, trivets and cheeseboards.



Meet the Exhibitors

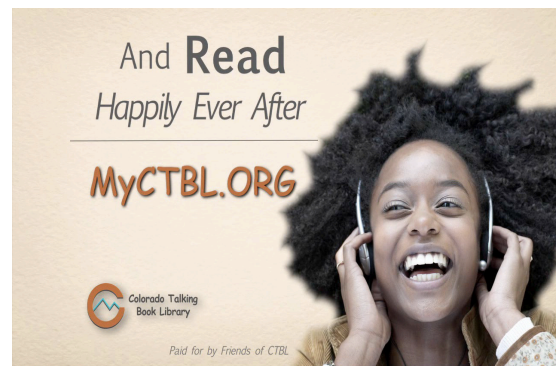
Hannah Simons, Hannah's Essentials

Hannah Simons, a young lady born with a genetic disorder called Williams Syndrome, loves music and animals, and is passionate about great smelling cosmetics. Her mother Helga, who is passionate about protecting the environment and growing things, has been trained in Permaculture and Herbology. Together they developed an amazing line of natural cosmetics, pure aromatherapy and organic teas. Hannah's Essentials skin care products are gentle and effective, helping to regain and maintain the natural balance of your skin, promoting health and well-being. The products are composed of purely organic and natural ingredients, infused with healing herbs, essential oils and much LOVE! Most of the herbs used in the products are grown on their urban, organic Permaculture farm. All of their products are tested and used, not by animals, but by their own family and friends. The products are FREE of gluten, cruelty, paraben, mineral oils, harsh preservatives, petrolatum products, artificial fragrance and dyes! www.hannahsessentials.com



Emily Zimmermann, InspirationZ

Emily Zimmermann grew up in South Carolina with three siblings and her parents. Emily received a one-in-a-million brain tumor diagnosis when she was a freshman in high school. Her entire family rallied as they made the journey together. Four surgeries, blindness and other physical challenges are now part of Emily's life. Now completely blind, Emily graduated from high school with honors and recently received a bachelor's degree in Speech Communications at Metropolitan State University of Denver (May 2017). She struggles with many challenges on a daily basis, but she does not let those challenges stop her. She is just one month into a paid internship at Charter Communications, testing phone apps for accessibility. www.brokencrayonsejz.com

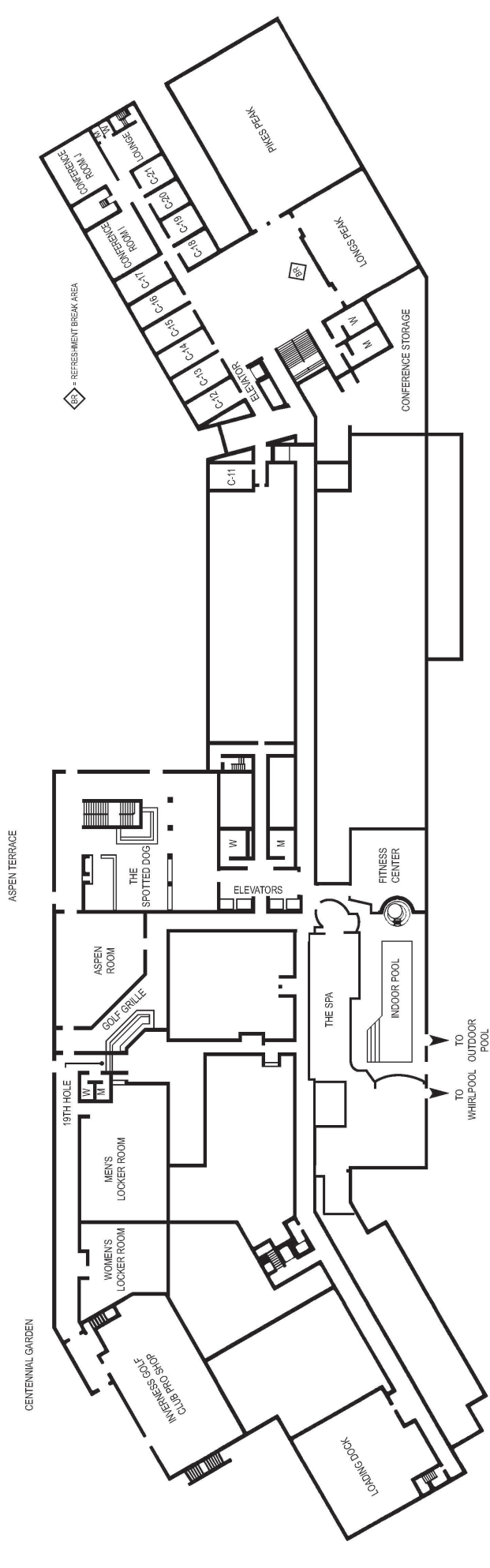


Colorado Talking Book Library

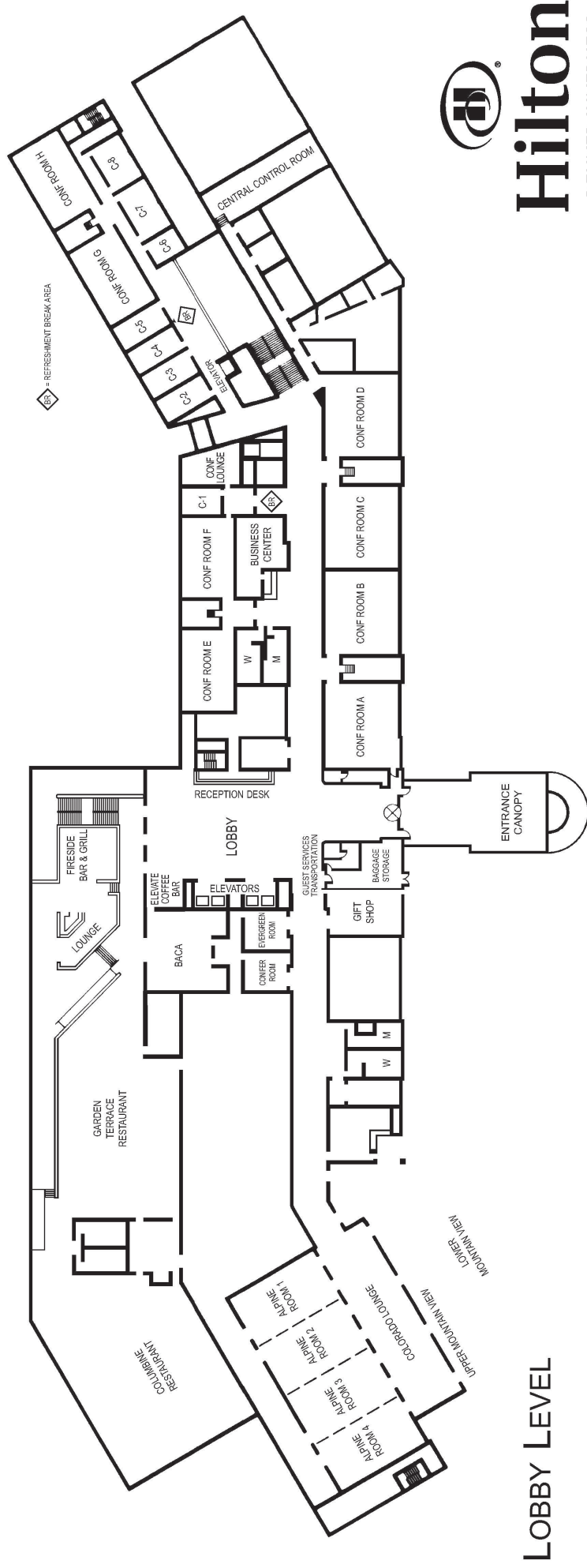
For people who can't read standard print, The Colorado Talking Book Library provides free audio, Braille, and large print books to keep them connected to reading, stories and adventure. Books go through the mail postage paid and are sent automatically based on reading interests. Books can also be downloaded to a personal smart device through the BARD Mobile iOS & Android app. For more information, call the library at 800-685-2136 or www.myctbl.org and click Get Started.

Notes

[illegible]



GROUND LEVEL



LOBBY LEVEL