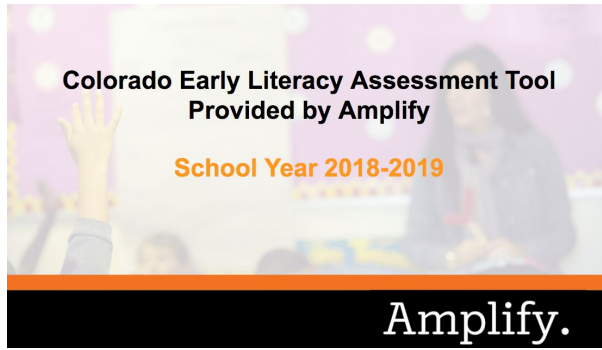
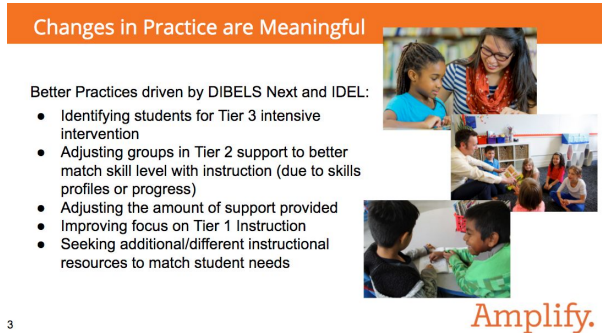


<p><b>Slide 1: Introduction</b></p> <p>Thanks for taking time to listen in. We are excited to continue our collaboration and partnership with you! For the past 5 years we have had the privilege to support you, the Read Act and the ELAT program with mCLASS: DIBELS Next as your Early Literacy Assessment Tool.</p>	
<p><b>Slide 2: Changes in Practice are Meaningful</b></p> <p>The changes that teachers are making using the Amplify platform are changes that we know will result in better student learning. Teachers are identifying students for intervention, they're adjusting intervention groups to better match skill level with instruction. They are tailoring the amount of support provided for those students and teachers are improving their focus on Tier 1 instruction, understanding that quality core instruction is the best first step to improving outcomes for kids. Additionally they're also able to better match resources to student needs.</p>	

### Slide 3: Supporting the Colorado READ Act

In partnership with schools throughout CO, we will:

- Support teachers as they implement the READ act by identifying and creating individual READ Plans for SRD students.
- We will provide high quality assessments that link directly to early literacy skills.
- We will provide Tools for teachers to make meaningful decisions based on data.
- We will provide opportunities for Literacy skill practice for students that can be done at school or at home.
- And We will provide customer care support on all aspects of the platform.

Additionally for the 2018-2019 school year, we have made updates to mCLASS in response to feedback from teachers and administrators across Colorado. I am going to walk you through a few of these new features now.

### Supporting the Colorado READ Act

Full support to districts in implementing the READ Act by assisting teachers in identifying and creating individual READ Plans for SRD students.

- **Interim Assessments:** mCLASS:DIBELS Next; mCLASS:IDEL (Spanish)
- **Diagnostic Assessment:** DIBELS Deep
- **Teacher Planning Tools:** Student activities, parent letters, small grouping, item analysis
- **Student Literacy Practice:** Boost
- **Customer Care Support:** Covering all aspects of the platform.

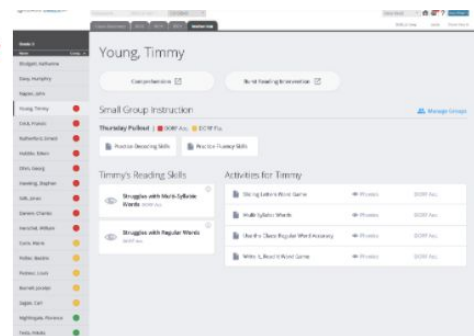


Amplify.

### Slide 4: Updates

To begin with we are really excited to show you the new mCLASS instruction page that is available to teachers. mCLASS instruction will allow teachers to view detailed information about each student in their class all in one place! So as Timmy's teacher I am now able to quickly see which small groups he is part of, a list of the reading skills that Timmy is struggling with based on his latest DIBELS NEXT data.

### Updates for SY18-19

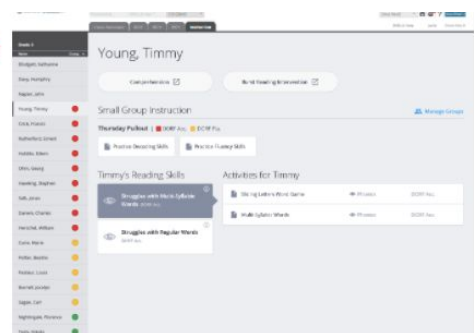


9

### Slide 5: Instructional Activities

And I am able to immediately access instructional activities that I can utilize with Timmy to fill his gaps.

### Updates for SY18-19



10

## Slide 6: Comprehension Lessons

Additionally, I will have access to comprehension focused lessons and passages.

comprehension mCLASS Instruction Home

Grade 1 Grade 2 Grade 3 Grade 4 Grade 5 Grade 6

### Lessons

**Small Group**

- Looking For Evidence F
- Digging Deep F
- Using Vocabulary HF

**One on One**

- Find the Main Idea F
- Reviewing the Facts HF
- Read with a Pencil HF

### Passages

**Fiction**

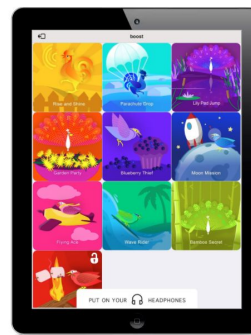
- The Dinosaur Games
- Puff the Puppy
- Sully and the Octopus

**Non-Fiction**

- All About Rainforests
- Night Life
- Supply and Demand

## Slide 7: Boost

Another great addition to the mCLASS platform is the Boost app. This mobile app allows students to continue practicing their skills outside of intervention.

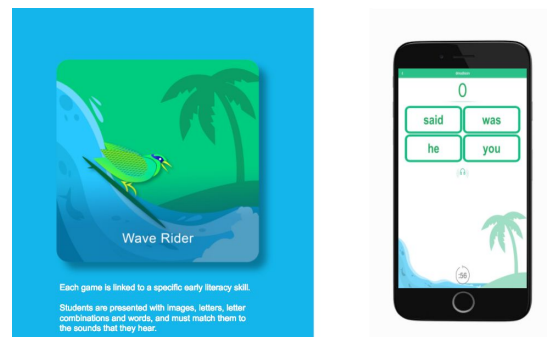


**Boost**  
iPad/ iPhone practice app that gives students additional practice at home or school.

- Phonological Awareness
- Letter-Sound Knowledge
- Blending
- Regular Word Recognition
- Irregular Word Recognition
- Letter Combination Knowledge
- Advanced Phonics Word Recognition

Amplify.

The app has several games through which students can practice skills ranging from phonological awareness to advanced phonics. (back to instruction page)

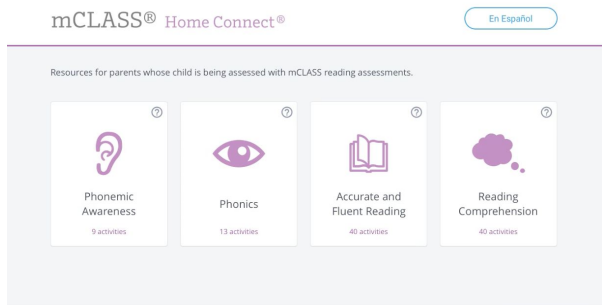
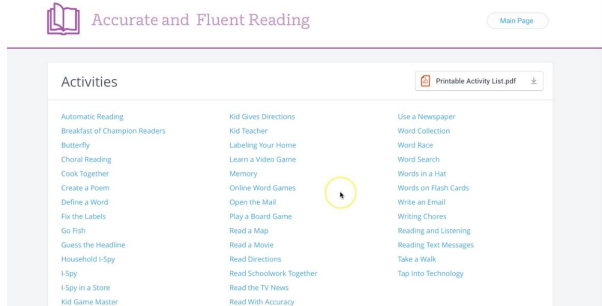


And, from mCLASS instruction, I can see my students progress with the games.

Print QR Code BOOST STATS Boatman, William Log Out

DISTRICT: Write your Burd ID# SCHOOL: Burd Math CLASS OR GROUP: Burd Test FROM: March 08, 2018 TO: March 15, 2018

STUDENTS +	LAST ACTIVE	PROGRESS + COMPLETION	ID	PLAYTIME
New Student	-	PA LS BL RW HW LC AP	0%	-
Student S1	-	PA LS BL RW HW LC AP	0%	-
Student S2	-	PA LS BL RW HW LC AP	0%	-

<p><b>Slide 8: Parent Resources</b></p>	
<p>Another exciting addition to the mCLASS platform is a new Parent Resource Site. Many of you have asked for an expanded set of resources and tools that can be shared easily with parents and this site is the answer to that request. The site will be in addition to the home connect letters that you have access to. Parents can learn more about each literacy area and access lots activities that they can use at home to support their students.</p>	
<p>Activities are available in English and Spanish.</p>	
<p><b>Slide 9: Ending Slide</b></p>	
<p>We have a team that can answer any Amplify platform questions that you may have. Please contact Karen Cushman with questions about our assessment and tools.</p>	<p><b>We're Here for You!</b></p> <p>Amplify has a team standing by to help with any questions you may have about our platform. Please contact Karen Cushman (<a href="mailto:kcushman@amplify.com">kcushman@amplify.com</a>).</p> 