



TOUCHING BASE

JUNE 2010

PUTTING PROVEN METHODS OF READING RESEARCH IN THE CLASSROOM
TO INCREASE STUDENT ACHIEVEMENT ACROSS COLORADO

Reading First Sustainability

Dear Colorado Reading First Participants,

As the Reading First Grant comes to a close, the Colorado Reading First (CRF) staff would like to thank you for your participation in the largest and most focused early reading initiative ever undertaken.

During the grant cycle, CRF impacted 54 districts, 85 schools, countless teachers, numerous principals, and over 10,000 students. The impact of Reading First has been far reaching and the components of Reading First continue to expand to other programs and initiatives.

As a Reading First school, you have gained knowledge of “best practices” in teaching reading, including scientifically based reading research (SBRR), the 90+ minute reading block, intervention for strategic and intensive students, and data driven instruction. Leadership for reading implementation was practiced by principals, reading coaches, lead teachers, and Building Leadership Teams.

The goal for the future is to continue to implement the Reading First model by using the training and knowledge received from CRF to support all learners.

Sustainability is the ability of a staff to maintain the core beliefs and values (culture) of a program and use them to guide program adaptations over time while maintaining improved or enhanced outcomes.

-Adapted from Century and Levy, 2002

The following Reading First core beliefs and values are sustainable and will provide a framework for supporting all students in reading:

- 90 minute reading block using a core reading program based on scientific reading research
- An additional 30 – 60 minutes of instruction for strategic and intensive students
- Systematic and explicit instruction
- Active engagement strategies
- Frequent progress monitoring
- Data discussions through grade level meetings and team collaboration
- Data driven instruction
- Walk-throughs with feedback
- Knowledge of SBRR in decision making
- Peer coaching/observations

Thank you so much for being a part of the Colorado Reading First Team. You have made a tremendous difference in the lives of students.

Best regards,
Sandra Nance M.Ed.
Director Colorado Reading First

POINTS OF SPECIAL INTEREST

- Letter From CRF
- DIBELS End Of Year Scores
- DIBELS Next Institute
- DIBELS Next Transition Workshop
- LETRS Early Childhood Training

CRF DIBELS END OF YEAR SCORES 2005-06 TO 2009-10

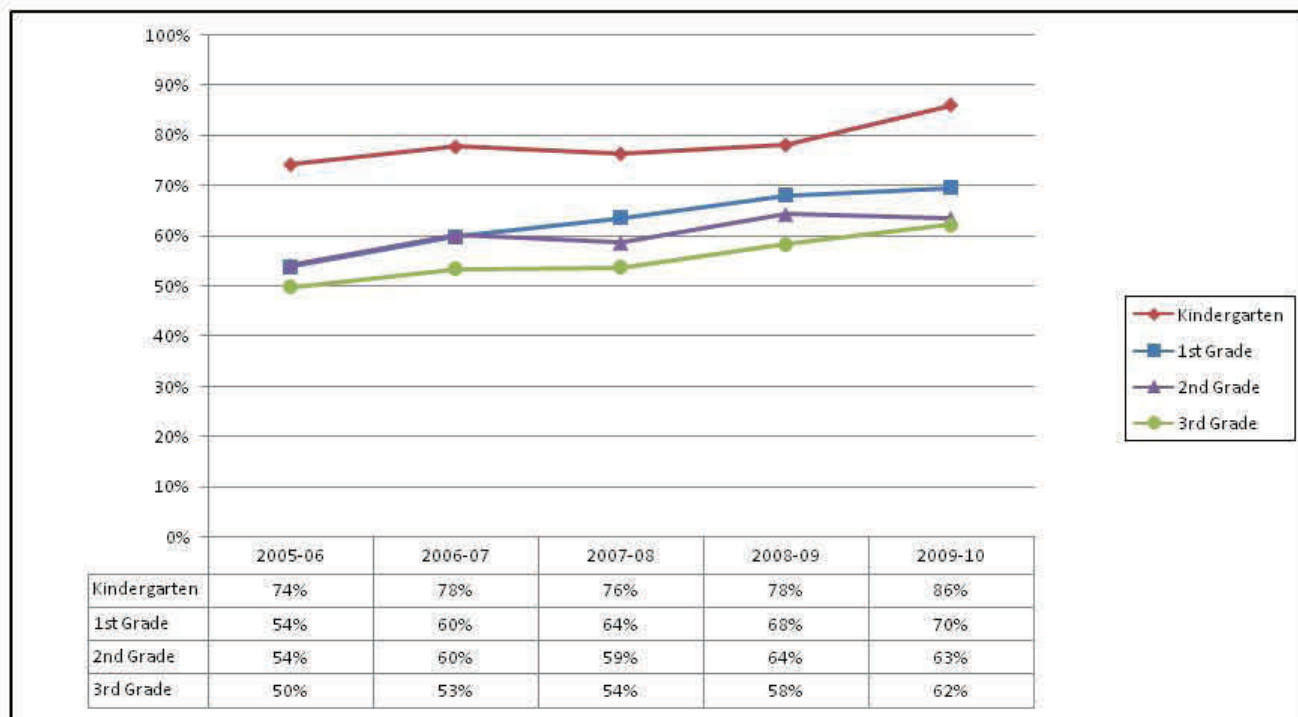
The line graph below depicts the percent of students scoring at benchmark on the Spring (end-of-year) DIBELS assessment from 2005-06 to 2009-10. Students scoring at benchmark are shown separately by kindergarten, 1st, 2nd, and 3rd grade. Several patterns are clear:

1. CRF students in *all* grades experienced an upward trend in the percent of students scoring at benchmark from 2005-06 to 2009-10.
2. The largest percentage of students scoring at benchmark are in kindergarten, followed by those in 1st grade, then those in 2nd grade, with the smallest relative percentage of students scoring at benchmark in 3rd grade. This pattern remains fairly constant over time.
3. The greatest increase in percent of students scoring at benchmark from 2008-09 to 2009-10 was in kindergarten (8% increase).
4. The greatest increase in percent of students scoring at benchmark from 2005-06 to 2009-10 was in 1st grade (16% increase).

Although no causal claims can be made, these data suggest participation in Colorado Reading First (CRF) is *associated* with an increase in the percentage of students in all grades scoring at benchmark on the Spring DIBELS assessment overtime. (Information provided by Ellie Spindler CRF Data Coordinator)



University of Oregon DIBELS Distribution Report Data
Cohort I & Cohort II Combined Spring Benchmarks
 Percent of Students in Kindergarten – 3rd Grade on Benchmark
 2005-06 through 2009-10
 Cohort I & Cohort II Student N= 767 – 1018



DIBELS Next Institute

Colorado Reading First (CRF) is hosting a **DIBELS Next Training Institute**, scheduled to take place **June 15-18, 2010**, in Denver.

The primary goal of this training is to help educators become proficient in using *DIBELS Next* data to plan and evaluate the effectiveness of their reading instruction. The secondary goal is for educational systems to build capacity so they will reduce their reliance on outside organizations (e.g., outside trainers and consultants) to provide professional development.

Registration has been expanded to include more than two participants per school. (if you would like to register additional personnel contact Jacob Heiney: Heiney_J@cde.state.co.us)

The **DIBELS Next Institute** will be held at the Sheraton Denver West: 260 Union Blvd., Lakewood, CO 80228. For reservations please call: 888.627.7027. Registration and breakfast will open daily at 7:30 a.m., with training beginning at 8:30. Training will conclude daily at 4:30 p.m., except for Friday, June 18, when training will conclude at 3:30 p.m.

(To register please click: <http://www.cde.state.co.us/scripts/DIBELSNextTrainingReg10/registration.asp>)



DIBELS Next Transitions Workshop

July 29, 2010

Colorado Reading First is hosting a **DIBELS Next Transition** workshop on July 29, 2009. This training will be held at the Sheraton Denver West: 260 Union Blvd., Lakewood, CO 80228. For reservations please call: 888.627.7027.

This one-day workshop will briefly review the foundations of DIBELS, provide a description of the changes to all **DIBELS Next** measures, and offer training and practice on administering

and scoring the new measures.

This workshop is intended for participants already trained in DIBELS.

In addition, current DIBELS Mentors attending this workshop will receive training materials to train users on DIBELS Next.

To register personnel for this training please visit the following Web link:

<http://www.cde.state.co.us/scripts/DIBELSNextTransitionTrainingReg10/registration.asp>



**COLORADO DEPARTMENT
OF EDUCATION
COLORADO READING FIRST**

Literacy Grants and Initiatives
Colorado Reading First
201 East Colfax Avenue, Room 307
Denver, CO 80203

Sandra Nance
Director, Colorado Reading First

Gena Feury
Principal Consultant

Phone: 303.866.6756
Fax: 303.866.3294

E-mail: Heiney_J@cde.state.co.us

WE ARE ON THE WEB!

[HTTP://WWW.CDE.STATE.CO.US/
COLORADOLITERACY/CRF/
INDEX.HTM](http://www.cde.state.co.us/coloradoliteracy/crf/index.htm)

PUT READING 1ST!

CRF Announcements

LETRS Early Childhood For Educators

August 9-10, 2010

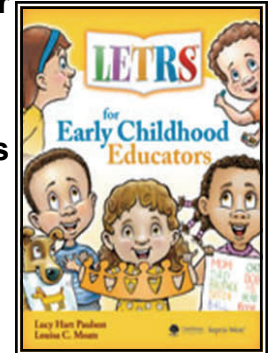
Colorado Reading First is hosting a **LETRS for Early Childhood Educators** training August 9-10, 2010. Registration for this training opportunity will be opened in early July.

The **LETRS for Early Childhood Educators** supplemental module provides quality professional development for early childhood educators who are interested in helping young children build a strong foundation in early literacy skills. The program explores descriptions of language and literacy development in ways that create a deeper understanding of these important processes while offer-

ing practical strategies for building these skills in young children.

LETRS for Early Childhood Educators

is appropriate for educators working with pre-school and kindergarten students as well as early elementary students who are experiencing difficulty with the literacy process.



If you have questions please contact Sandra Nance (nance_s@cde.state.co.us)

June 2010 - CRF Calendar

MON	TUE	WED	THU	FRI	S/SU
31	1	2	3	4	5/6
7	8	9	10	11	12/13
14	15	16	17	18	19/20
DIBELS Next Institute—Sheraton Denver West, 260 Union Blvd, Lakewood, CO For Hotel Reservations: 1.888.627.7027					
21	22	23	24	25	26/27
28	29	30	1	2	3/4
5	6	7	CRF July 2010 Events DIBELS Transition Training: July 29, 2010, location see page 3		
			CRF August 2010 Events LETRS Early Childhood: August 9-10, 2010, location TBD		