



COLORADO
Department of Education

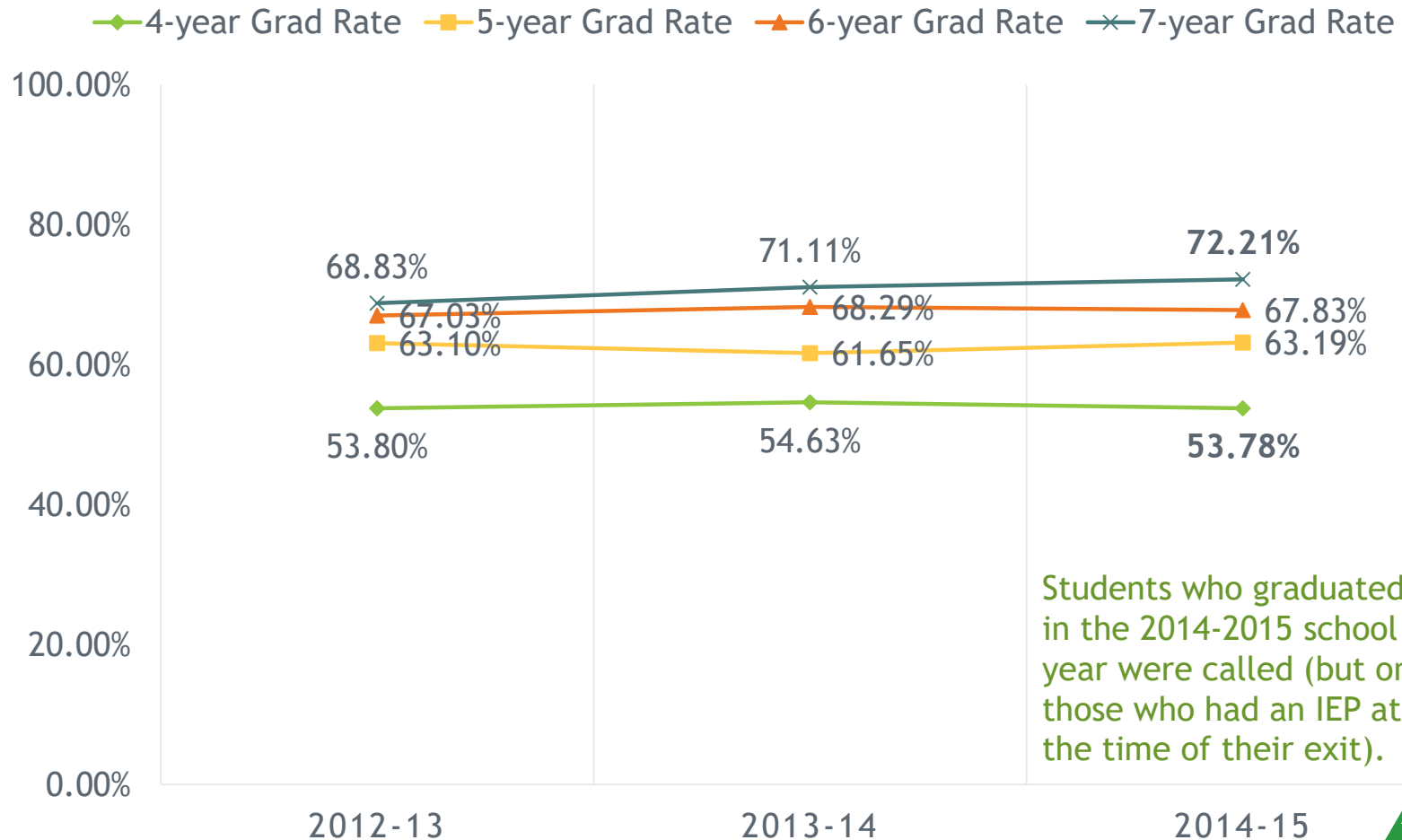
2016 Post-school Outcome Interview Results

State Summary

October 2016

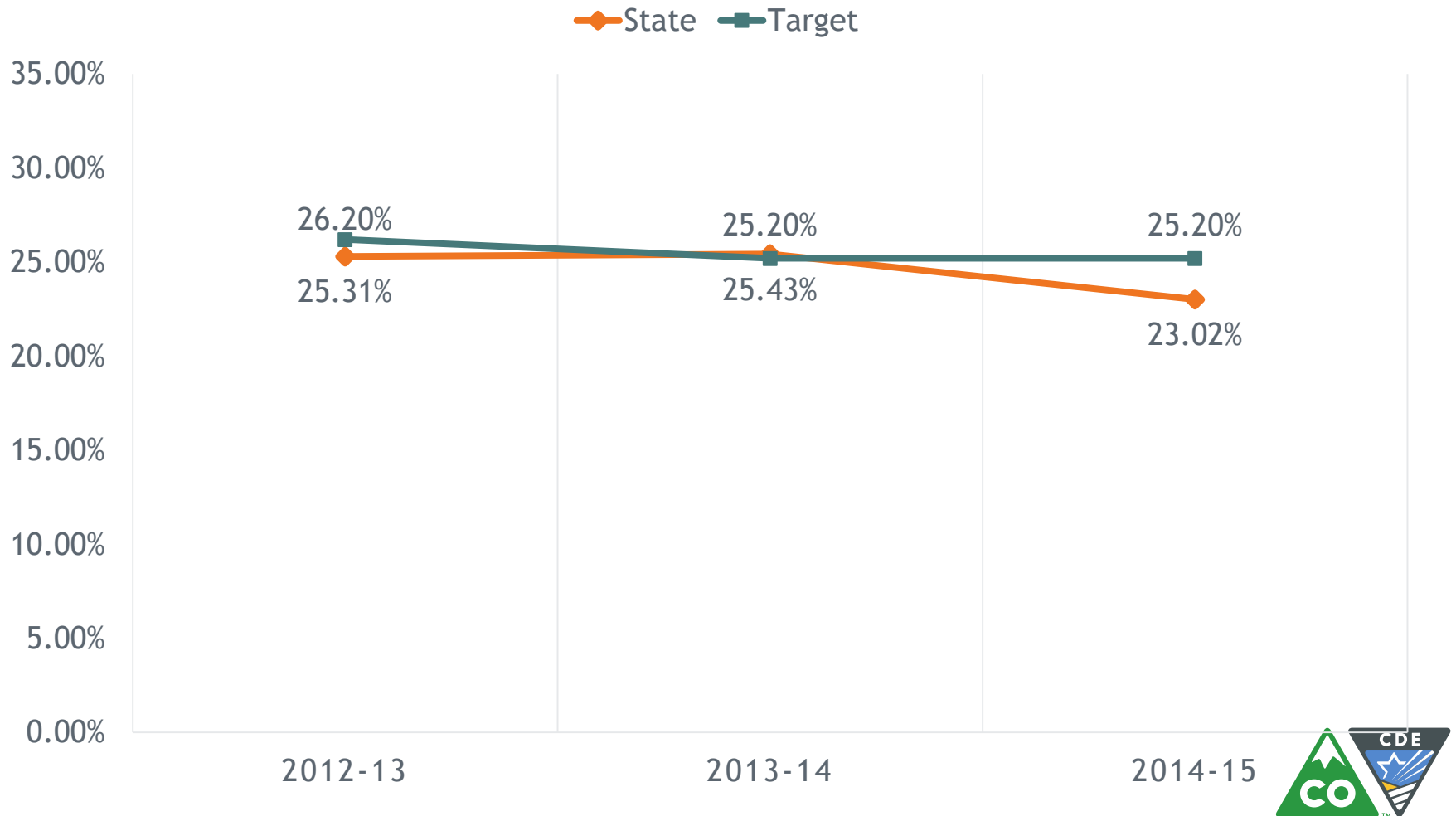
Graduation Rates

Let's review the state's grad and dropout rates before examining the PSO interview results!



Dropout Rates

Let's review your AUs' grad and dropout rates before examining the PSO interview results!



Post-school outcome interview

- **What are we measuring?**
 - What Colorado's former students with IEPs are up to 1 year after they exit from high school.
- **Why?**
 - So that AUs and the state learn if their programs worked/didn't work, and to use the information for review and improvement of their current programs.
 - Indicator 14 for OSEP.
- **How?**
 - Between May and September 2016, AUs called their former students who exited high schools during the 2014-2015 school year.
 - All interviews were recorded in the Data Management System.

Thank you AU directors, transition coordinators, social workers, and people in any other position who made this interview process happen!!

This report summarizes the results of the post-school outcome interviews in the state.



Interview Participation

Post-school Outcome Interview 2016



Quick Stats

As a state,

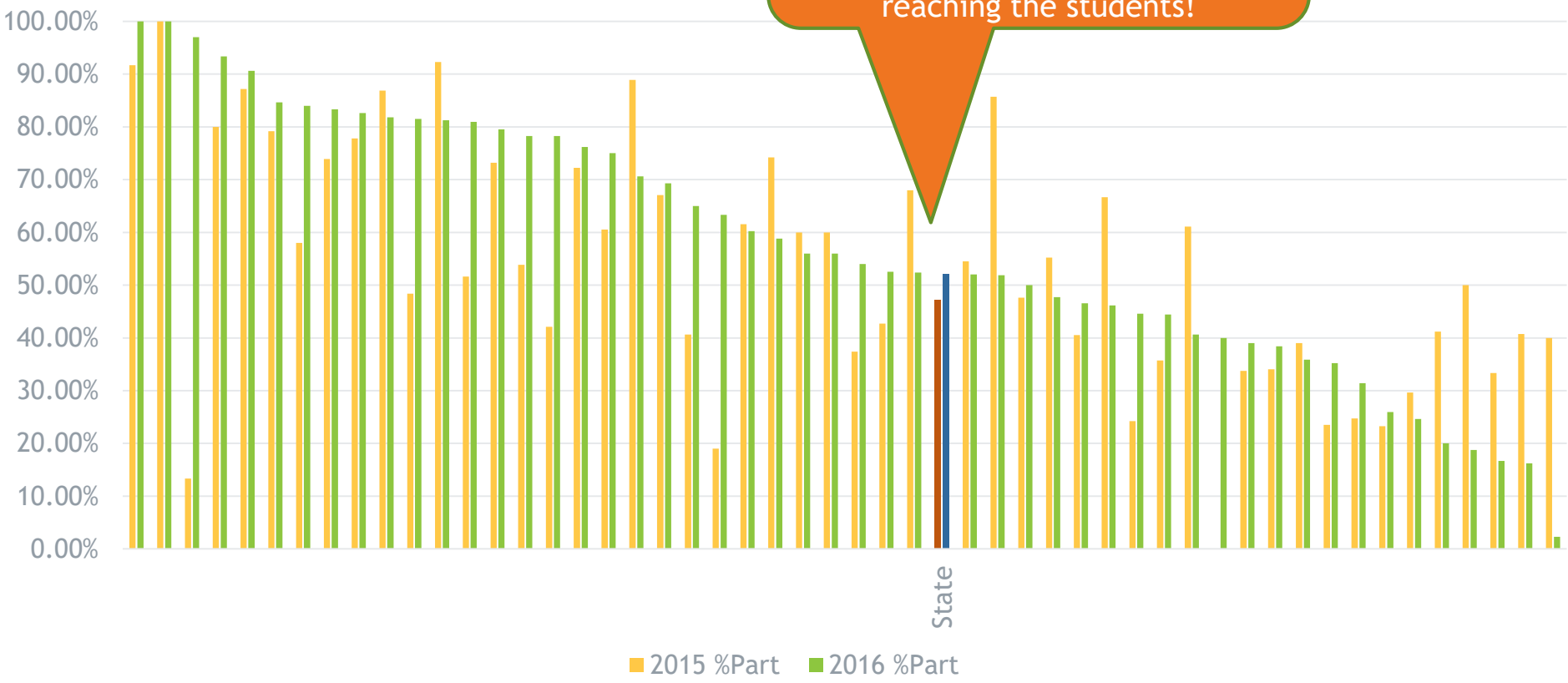
- We had approximately **4473 exiters** in SY2014-15
- **3320** of them were selected in the interview sample
- This sample was reduced by 53 students who either returned to HS or passed away.
- Among the remaining 3267 students, **1701 (52.1%)** participated* in the survey

*Participated = Indicated as “interview began” and answered the minimal 2 questions (enrolled and worked).

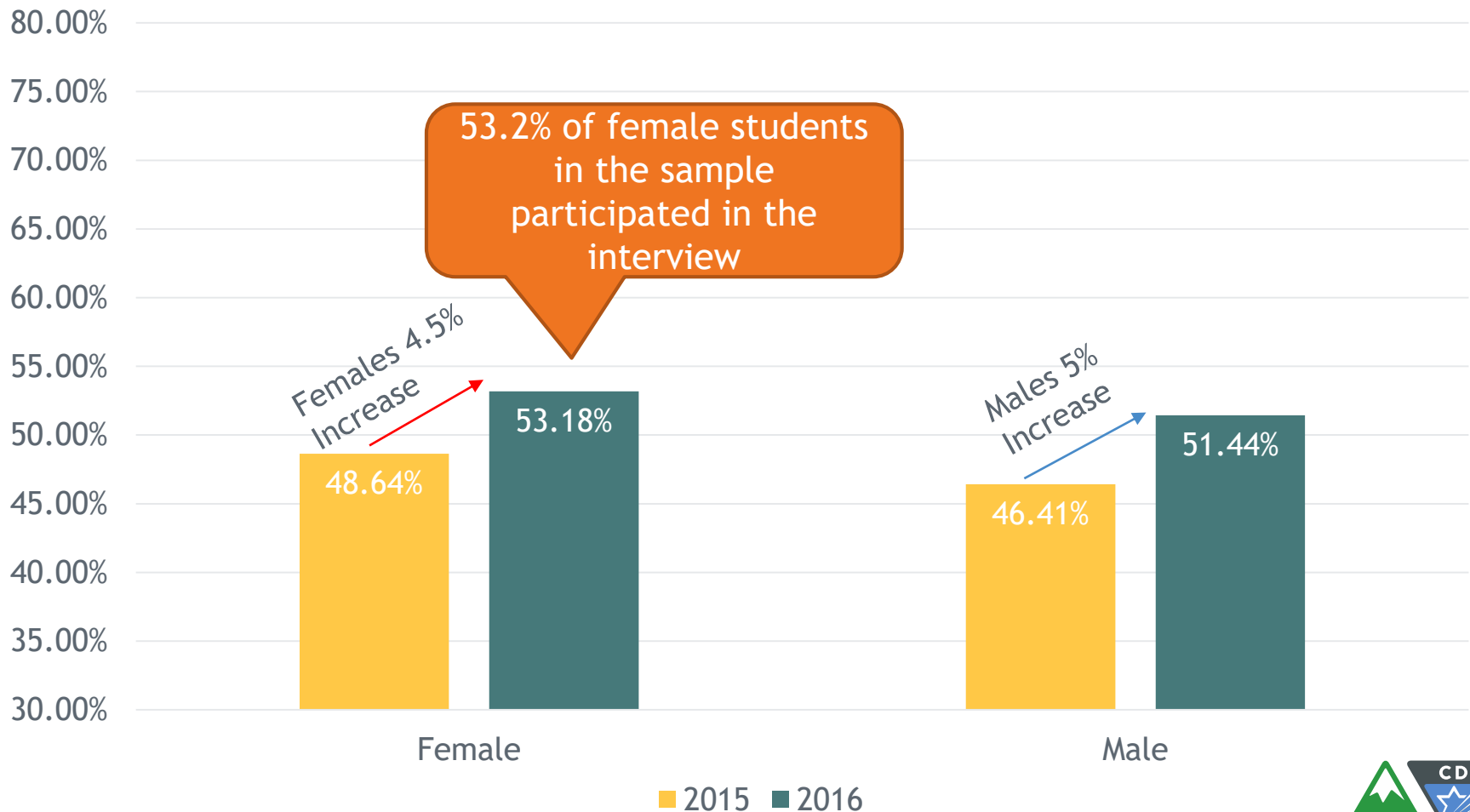


Many AUs increased participation rates this year!

As a State, our participation rates increased from 47.2% to 52.1% this year! Thanks to all the AUs who put so much effort into reaching the students!

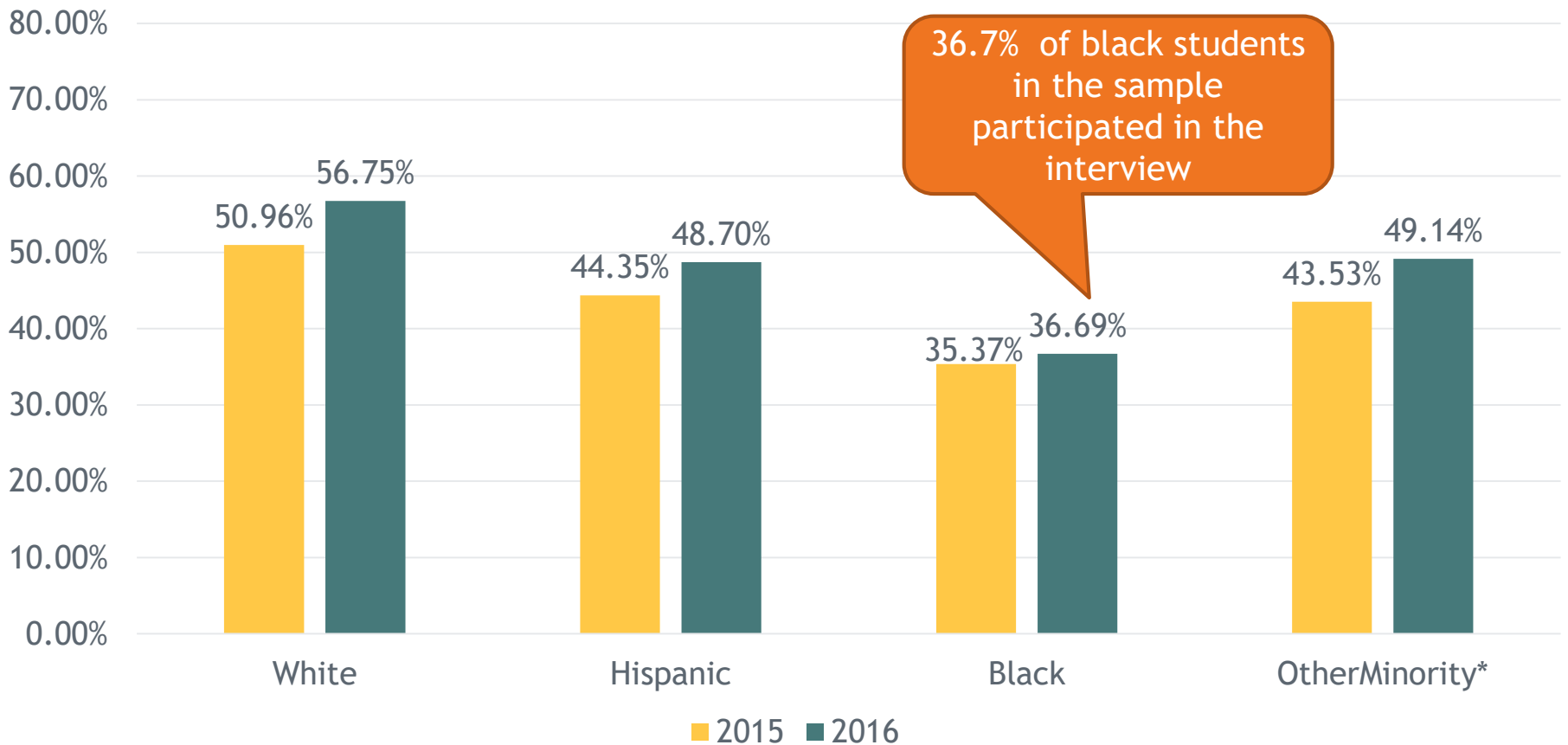


Who participated in the interview? - Gender



Who participated in the interview? - Race

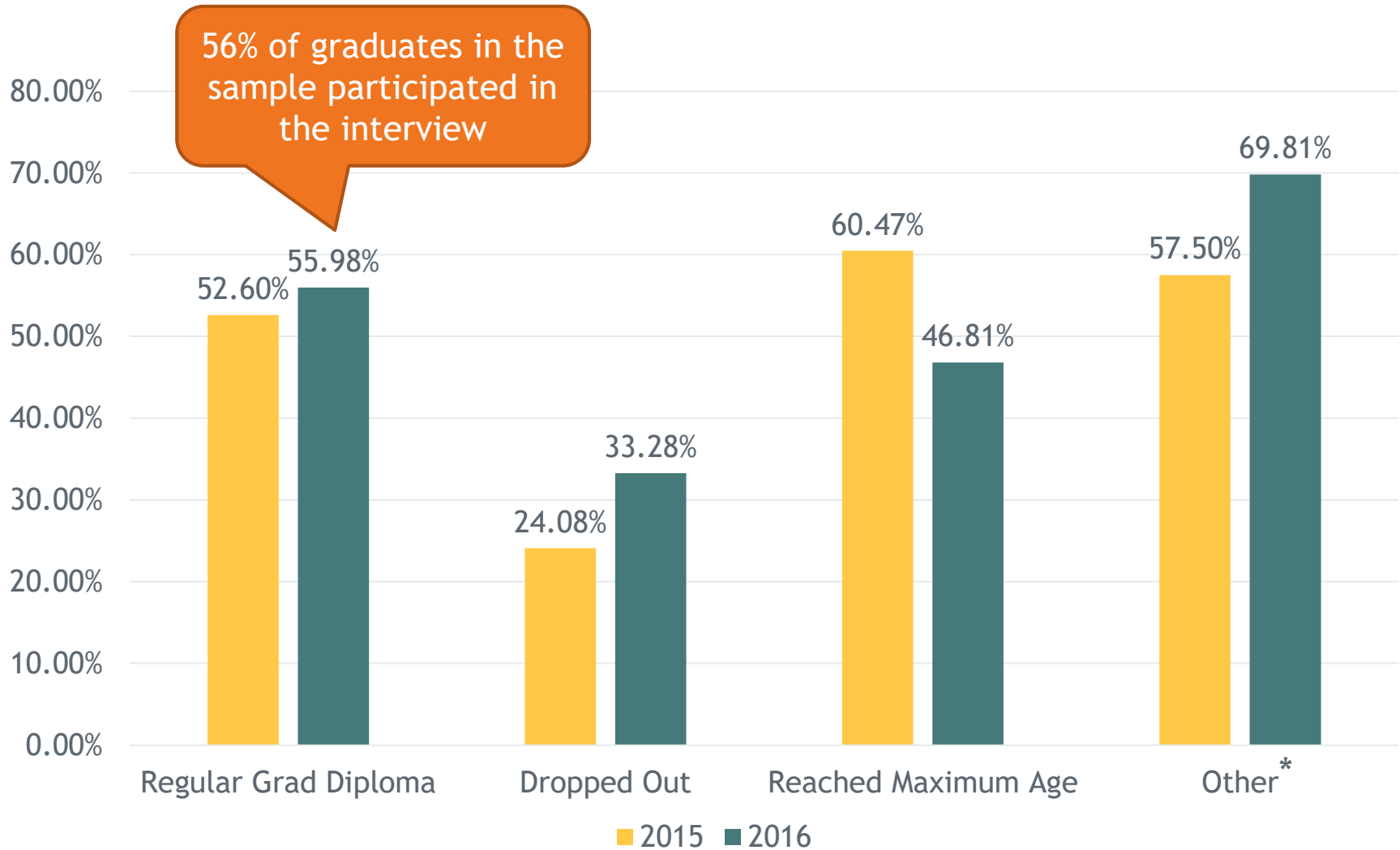
All races increased participation rates. White students increased the most at +5.8%



*"Other Minority" includes American Indian/Alaska Native, Asian, Hawaiian/Pacific Islander, and Two or More Races.



Who participated in the interview? – Exit Category

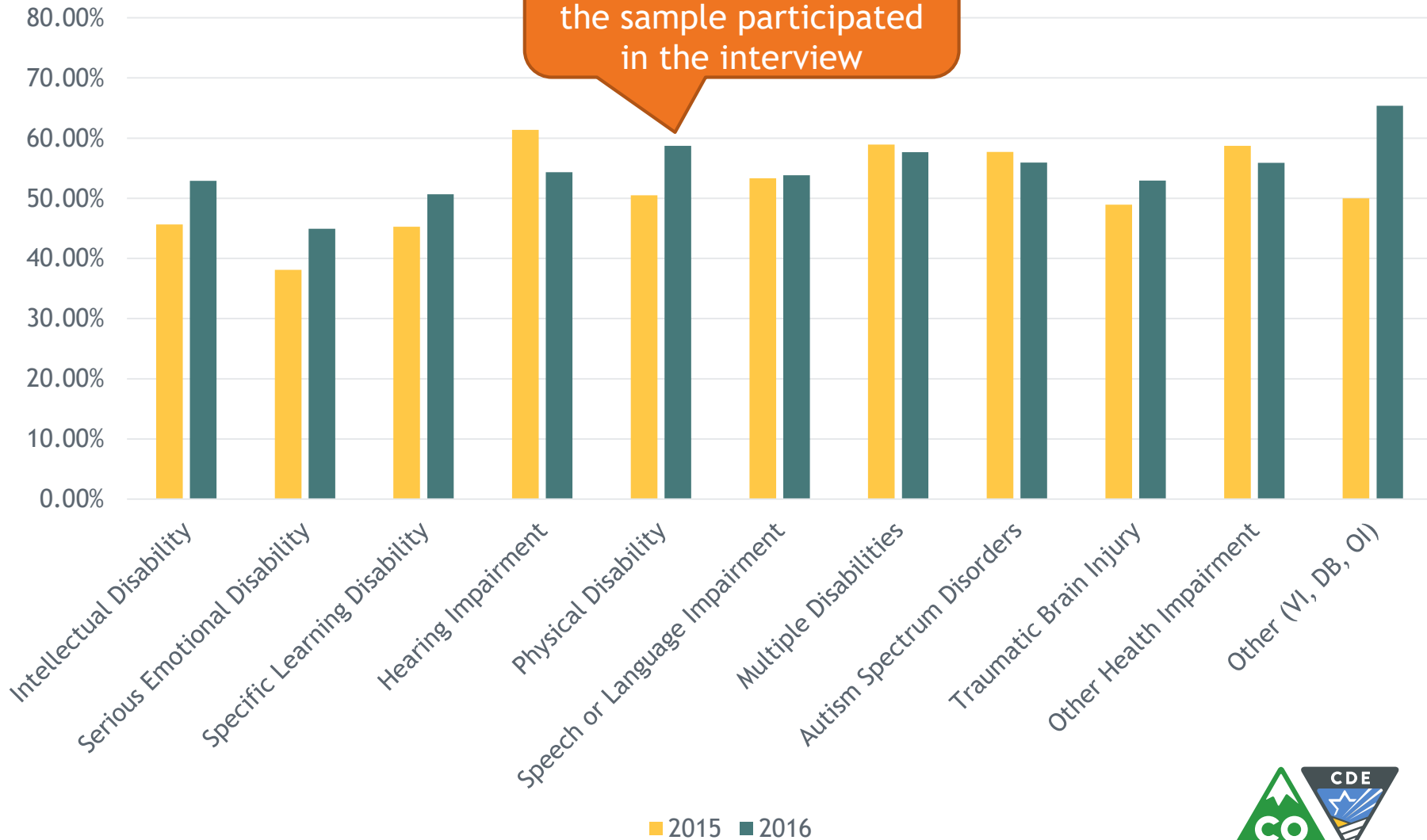


*"Other" includes students who received non-diploma certificate and GED.



Who participated in the interview? – Disability

58.7% of Students with physical disabilities in the sample participated in the interview



Interview Participation Summary

Yay!!

- As a state, the participation rate increased from 47.2% to 52.1%!
- The participation rates increased across gender, race, exit categories, and disabilities.

Things to ponder upon...

- Although 52.1% participation rate is great, we can't be satisfied yet. How can we increase participation rates?
- We are not doing a good job reaching out to black students...
- We want to reach out to more students who have dropped out. We increased the participation rates of students who dropped out, but they are still under-represented. How??



Post-school Outcomes

Post-school Outcome Interview 2016



Example Interview Questions

■ Postsecondary School

- At any time since leaving high school, have you ever been enrolled in any school, job training, or education program?
- At any time since leaving high school, were you enrolled in a 2-year or 4-year college or university?
- Did you complete an entire term?

■ Employment

- At any time since leaving high school, have you ever worked?
- How many hours do/did you work each week?

■ Agency Link

- Did you participate or are you currently participating in a Division of Vocational Rehabilitation Service such as the School to Work Alliance Program (SWAP)?

■ School-related Info

- Did you participate in services for students ages 18-21 in your school district?



4 categories of post-school outcomes

When we examine the data and report to OSEP (office of Special Education Programs) at USED, we use 4 categories of post-school outcomes:

■ Enrolled in Higher Ed

- Youth has been enrolled on a full- or part-time basis in a community college (two year program) or college/university (four or more year program) for at least one complete term, at any time in the year since leaving high school.

■ Competitively Employed

- Youth has worked for pay at or above the minimum wage in a setting with others who are nondisabled for a period of 20 hours a week for at least 90 days at any time in the year since leaving high school. This includes military employment.

■ Enrolled in other postsecondary education or training

- Youth has been enrolled on a full- or part-time basis for at least 1 complete term at any time in the year since leaving high school in an education or training program (e.g., Job Corps, adult education, workforce development program, vocational technical school which is less than a two year program).

■ Some other employment

- Youth has worked for pay or been self-employed for a period of at least 90 days at any time in the year since leaving high school. This includes working in a family business (e.g., farm, store, fishing, ranching, catering services, etc.).



Measurements ABC

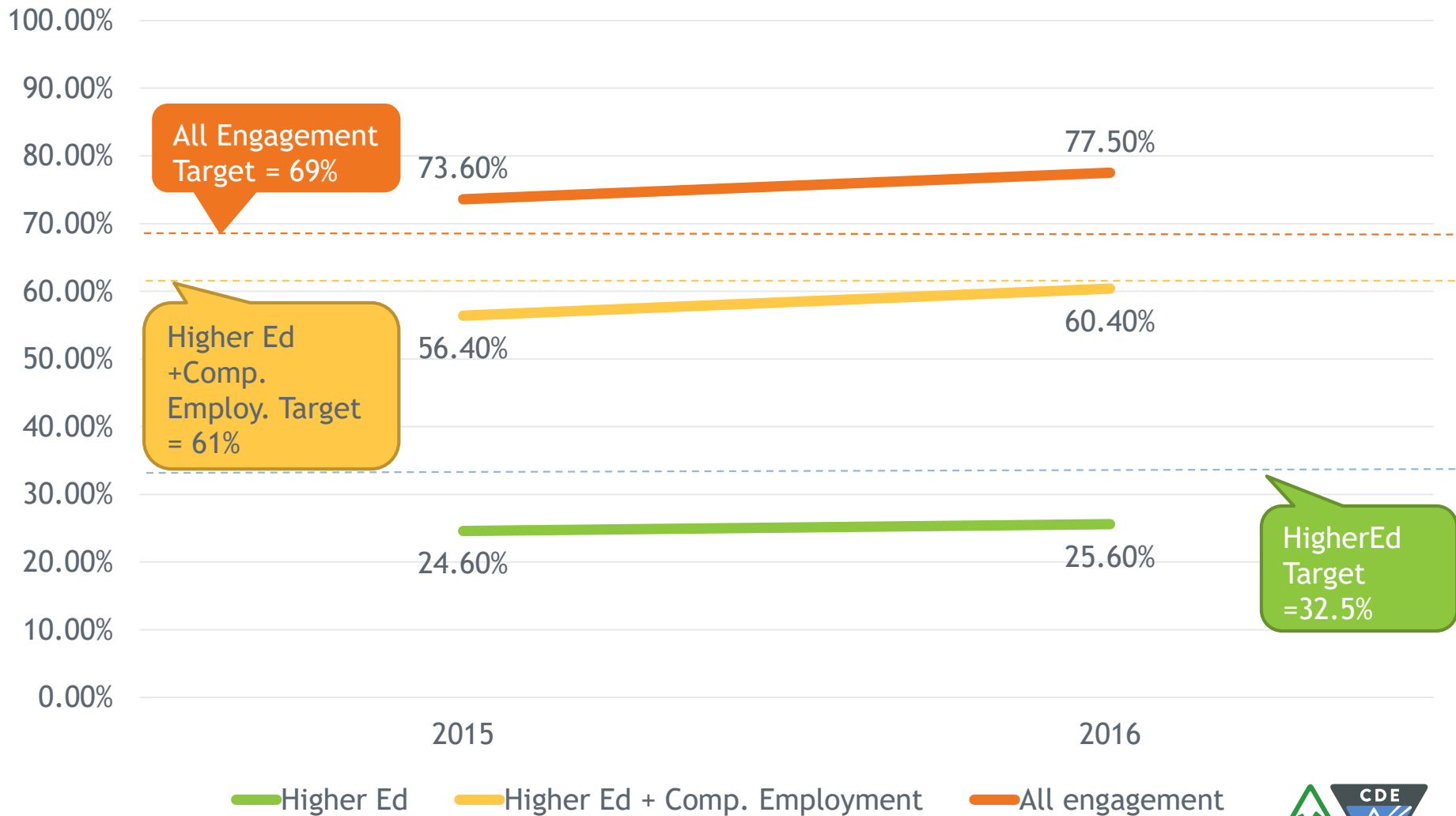
The 4 PSO categories feed into measurement ABC under State Performance Plan Indicator 14, upon which Colorado and AUs are evaluated.

- **Enrolled in Higher Ed**
 - **Competitively Employed**
 - **Enrolled in other postsecondary education or training**
 - **Some other employment**
- Higher Ed = Measurement A
- Higher Ed + Competitive Employment = Measurement B
- All Categories = Measurement C

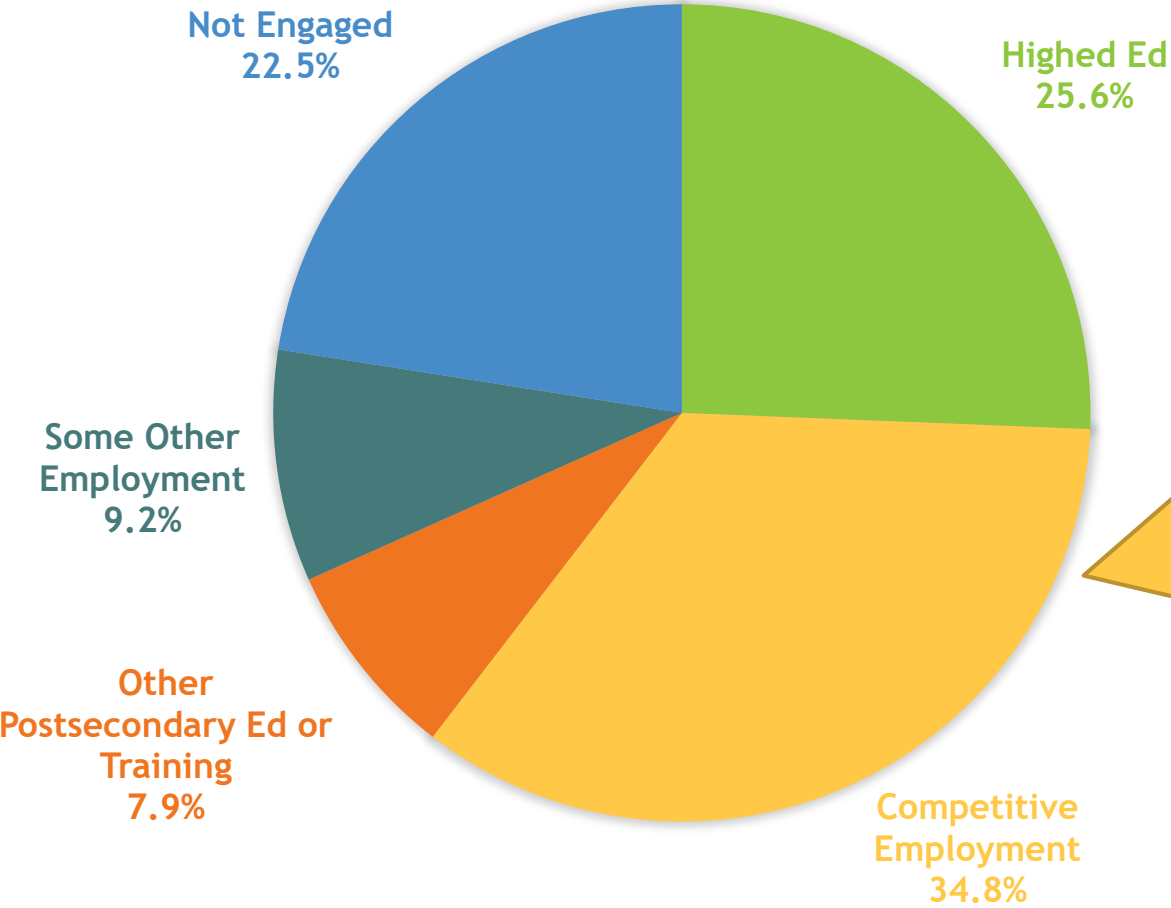
When a student is not in any of the above categories, the student is considered as “Not Engaged in the Community.”



Indicator 14 Results



State Post-school Outcomes



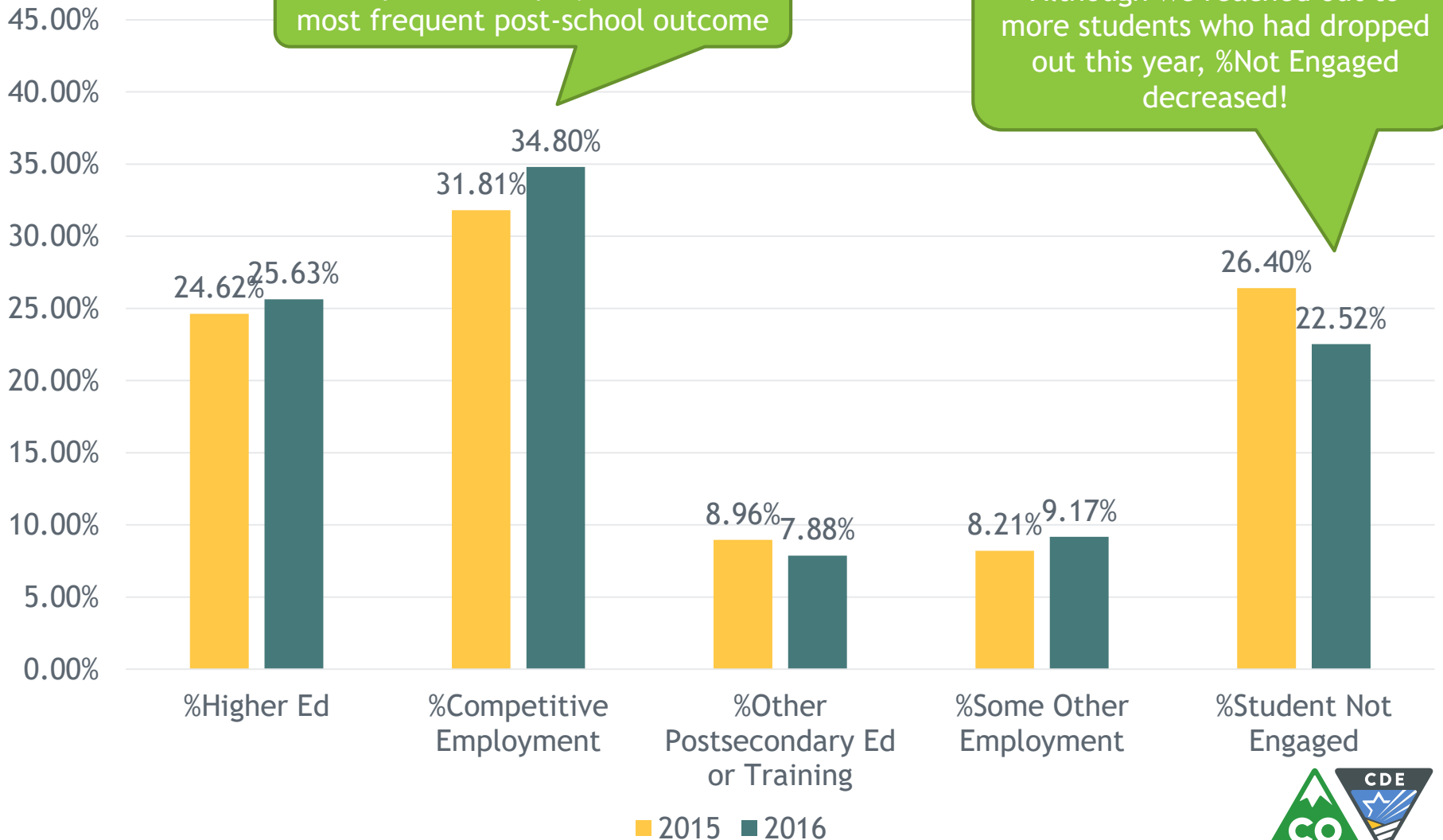
Out of 1701 students who participated in the interview, 34.8% were competitively Employed!



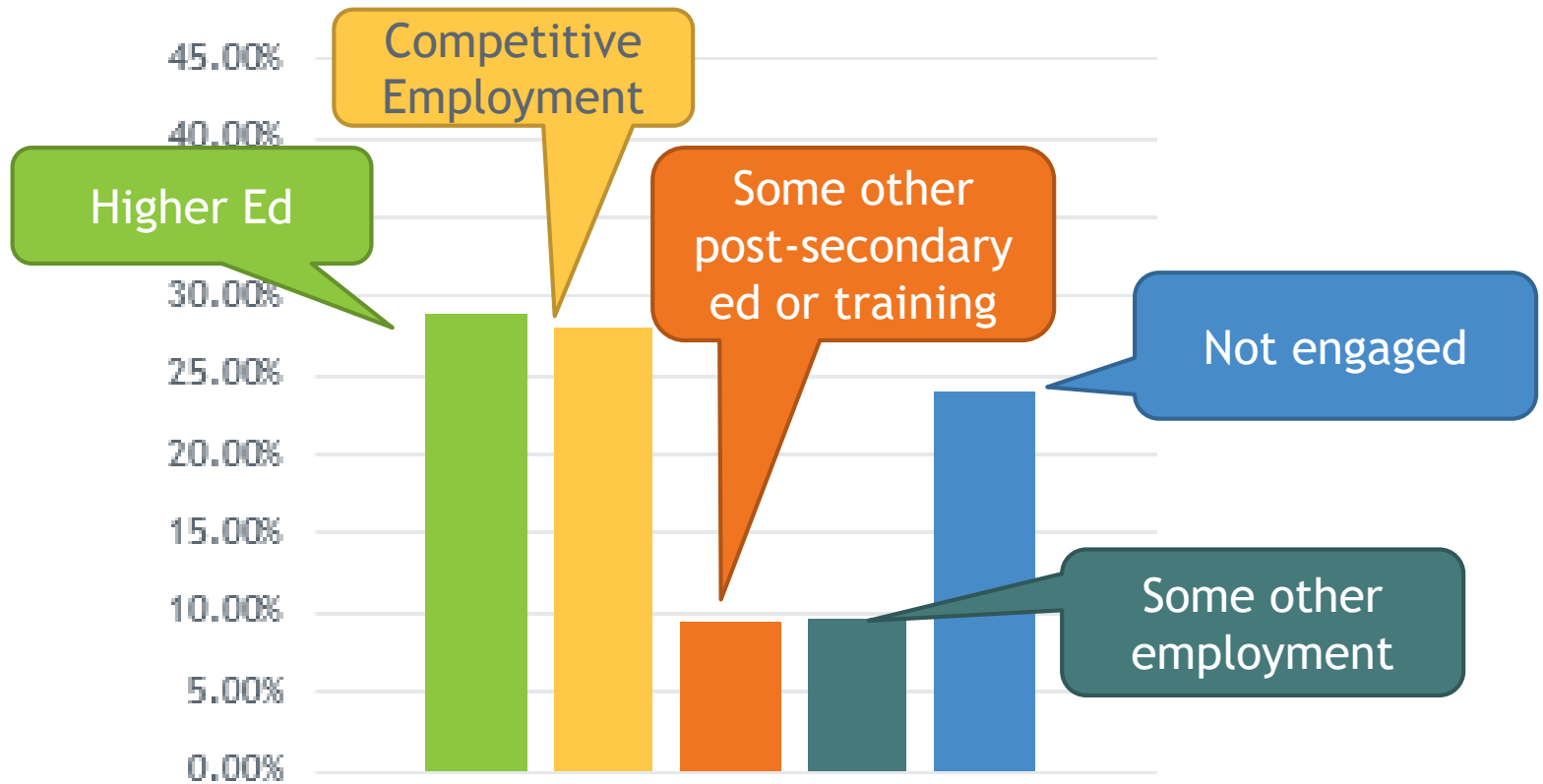
State PSOs 2015 and 2016

Competitive Employment is the most frequent post-school outcome

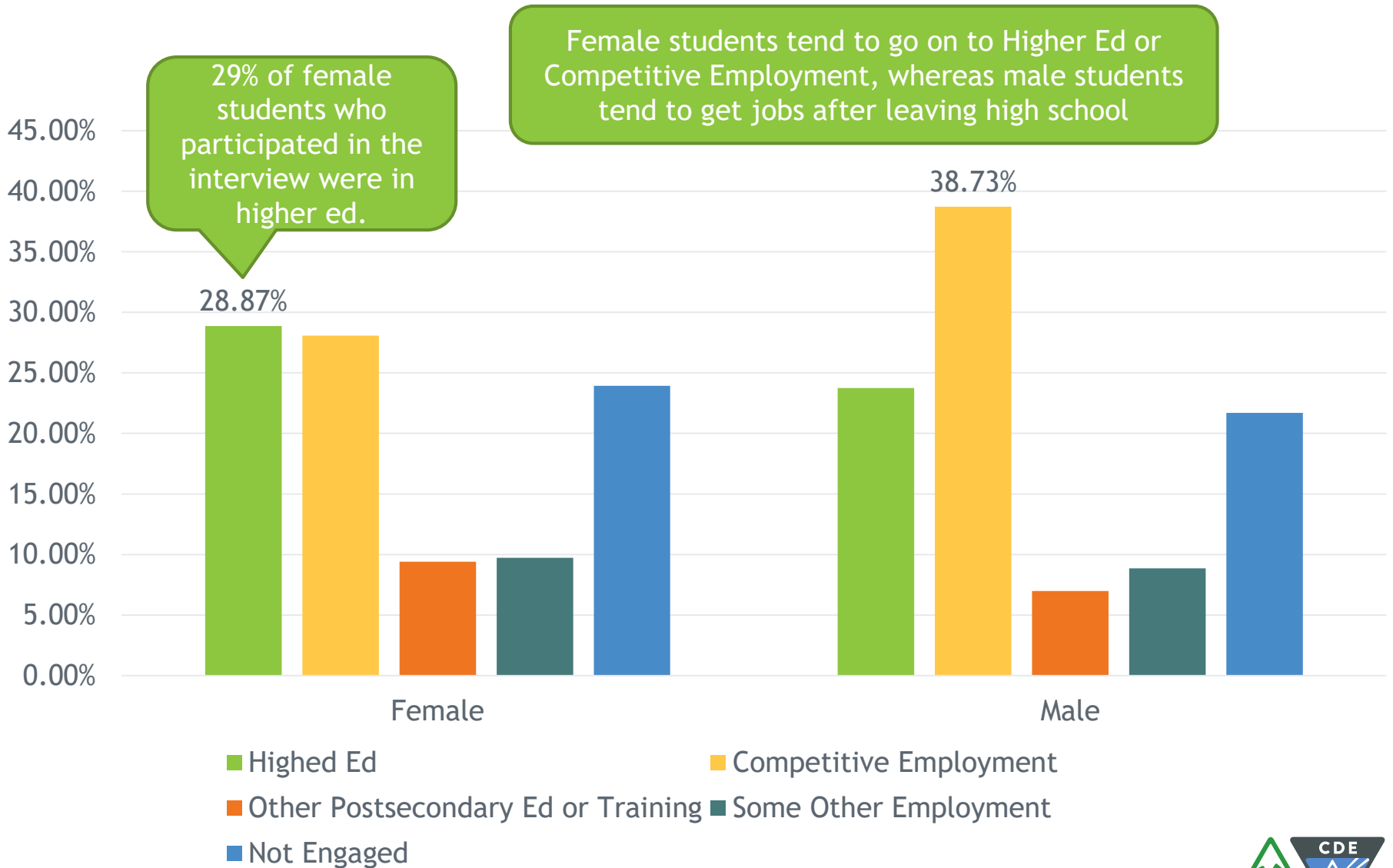
Although we reached out to more students who had dropped out this year, %Not Engaged decreased!



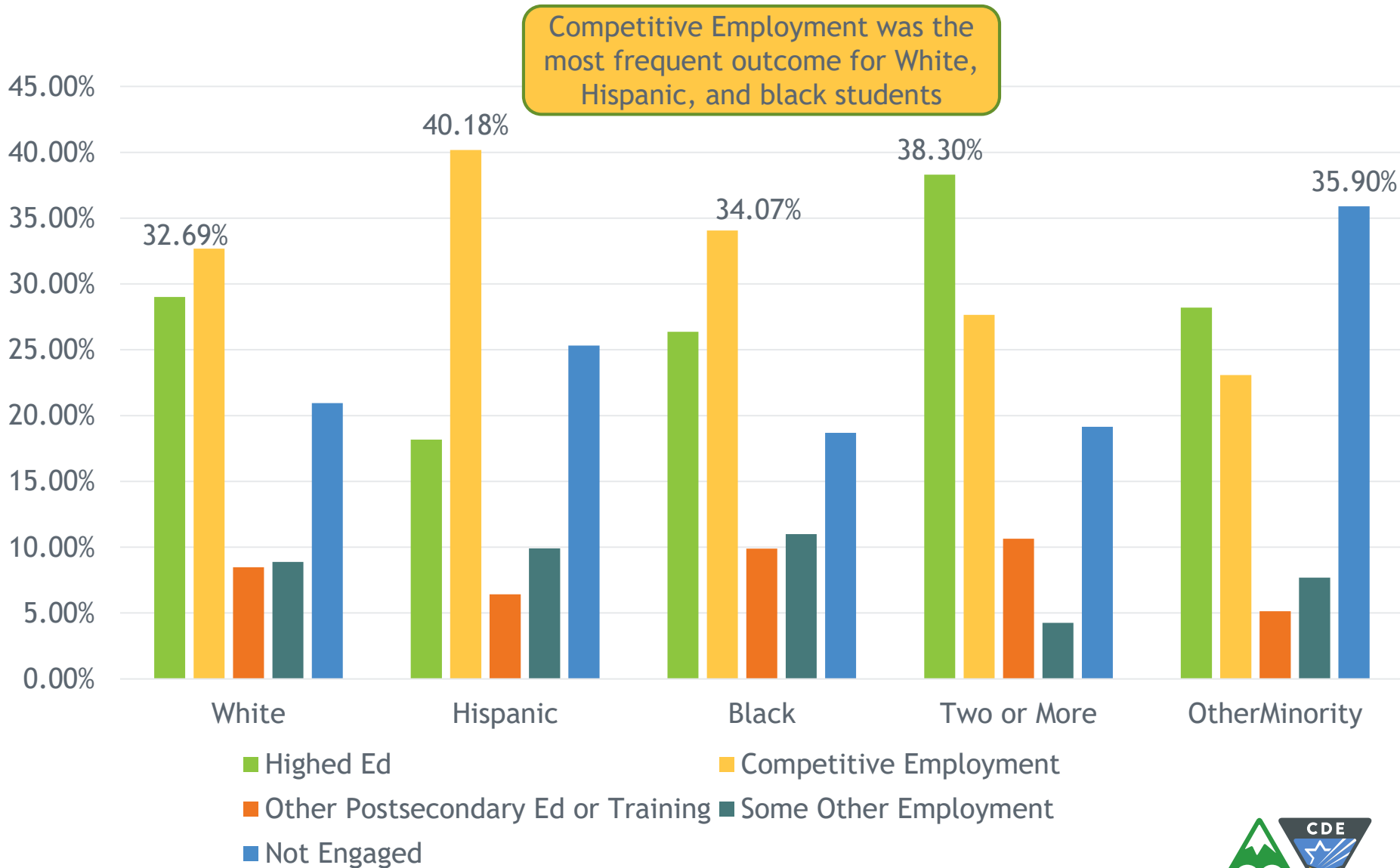
Color-Coding for Outcome Slides



Post-school outcomes - Gender



Post-school outcomes - Race

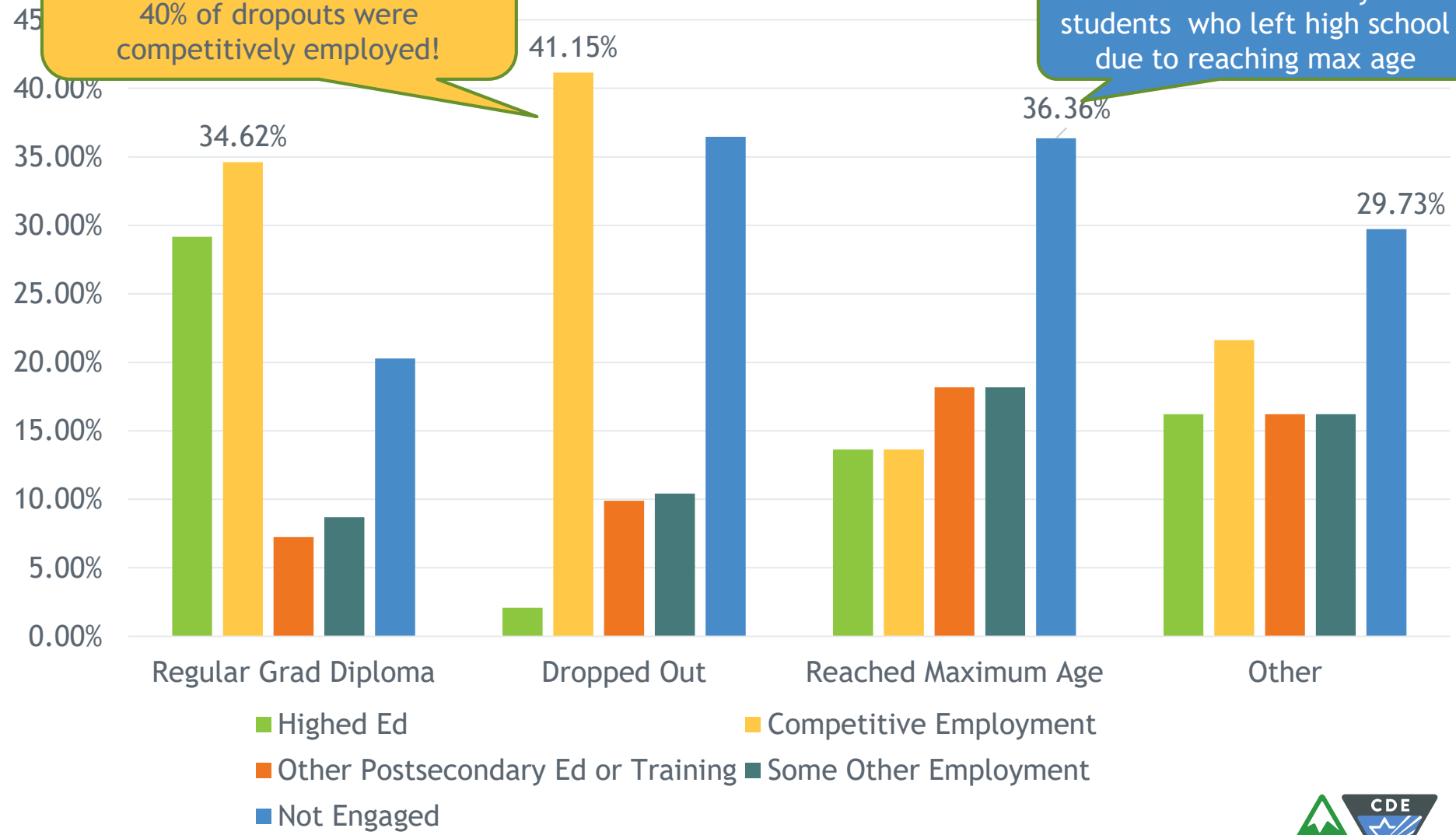


*"Other Minority" includes American Indian/Alaska Native, Asian, and Hawaiian/Pacific Islander

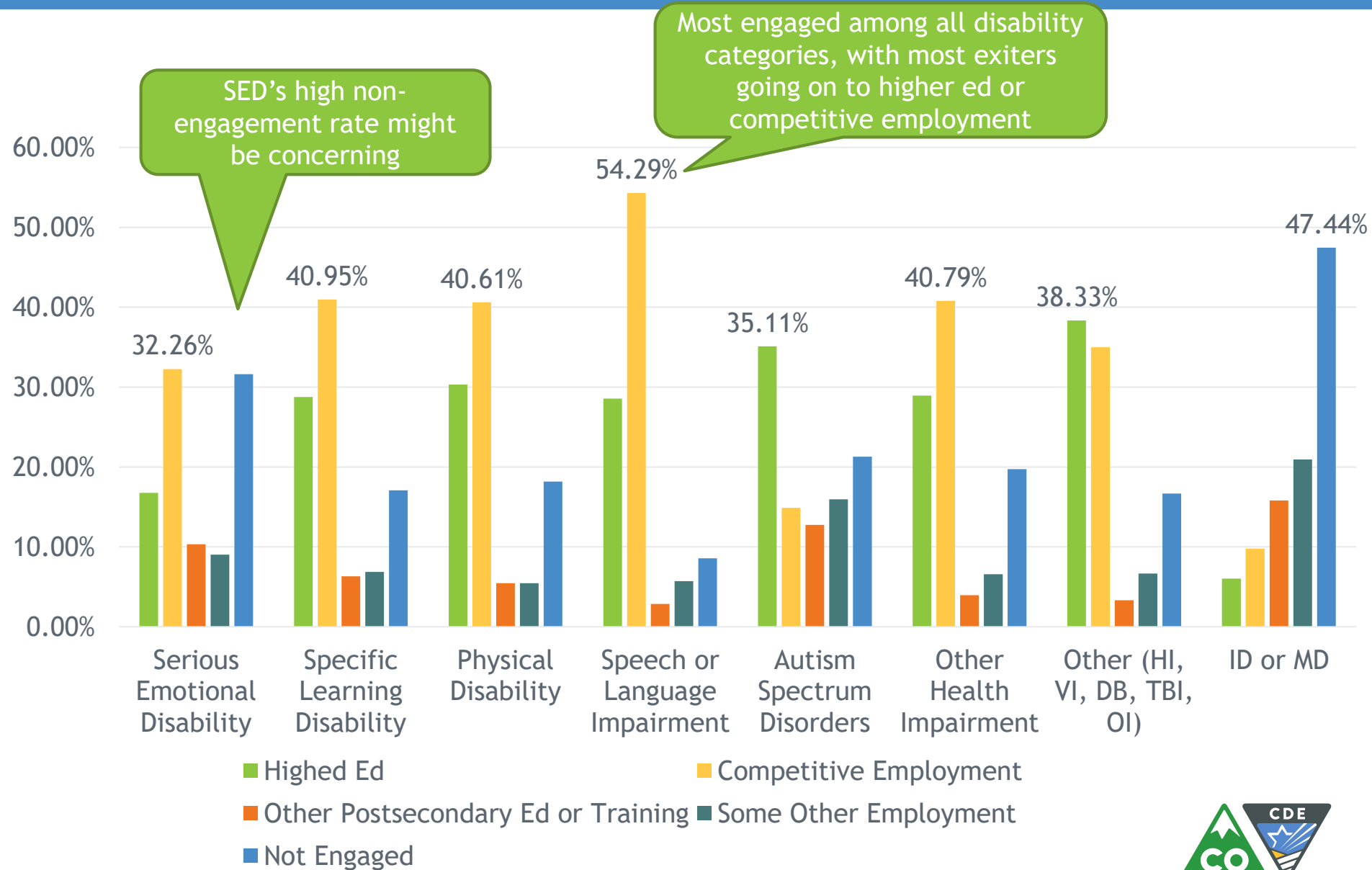
Post-school outcomes – Exit Categories

At least among the students whom we were able to reach, 40% of dropouts were competitively employed!

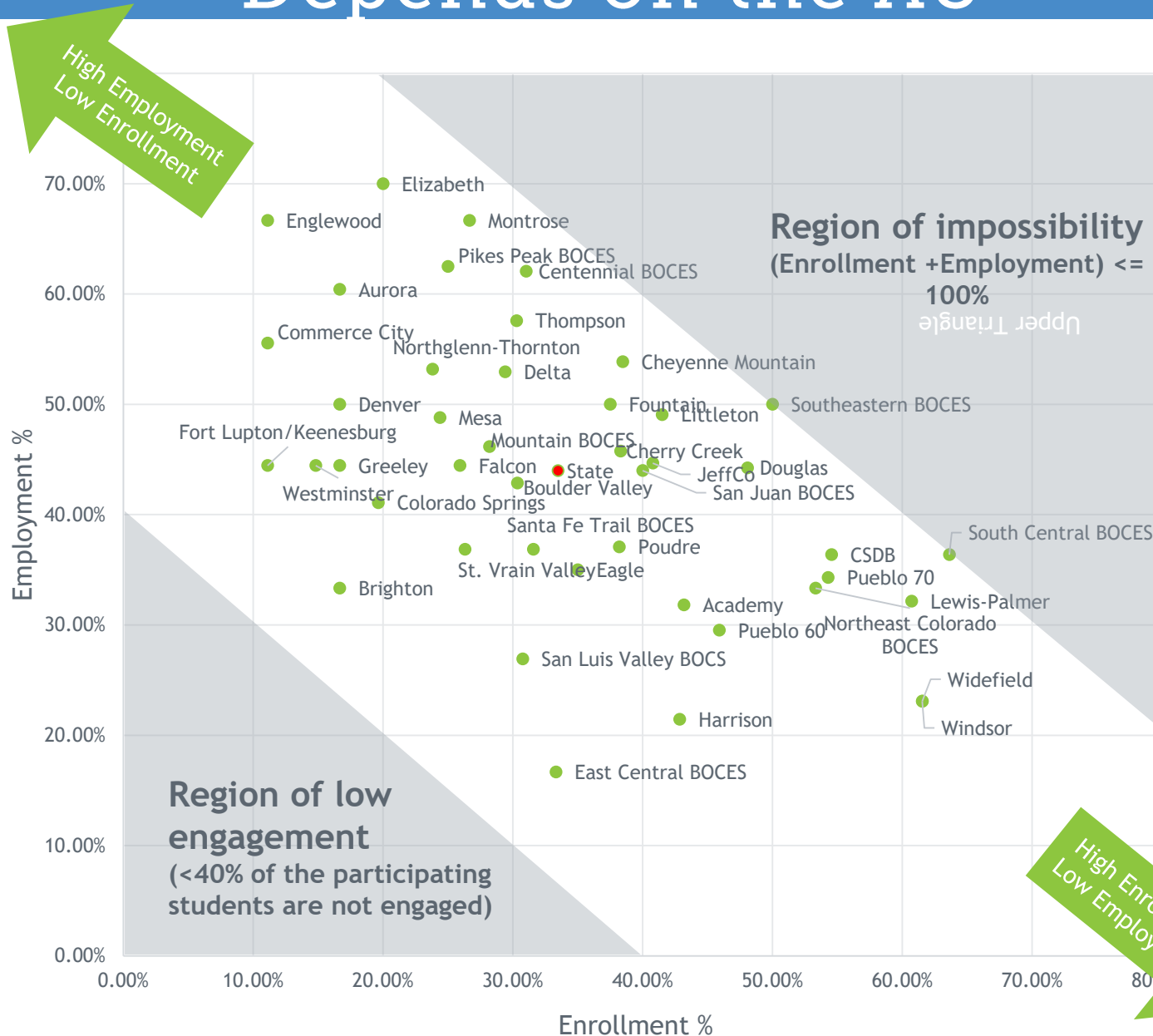
The most at-risk may be students who left high school due to reaching max age



Post-school outcomes - Disability



Enrollment vs. Employment? Depends on the AU



Post-school outcome summary

Yay!!

- As a state, **77.5%** of high school exiters were in secondary school/training or employed!
- At least among the students whom we were able to reach, **40%** of dropouts were competitively employed!

Things to ponder upon...

- 36% of students who left high school due to reaching maximum age were not engaged in the community. This is the highest among all exit types. How could this be?
- 32% of students with SED were not engaged. Why? This is the highest non-engagement after ID/MD.
- What are the contributing factors for the AU to be more/less on the enrollment- or employment-side? How can we better serve AUs given this info?

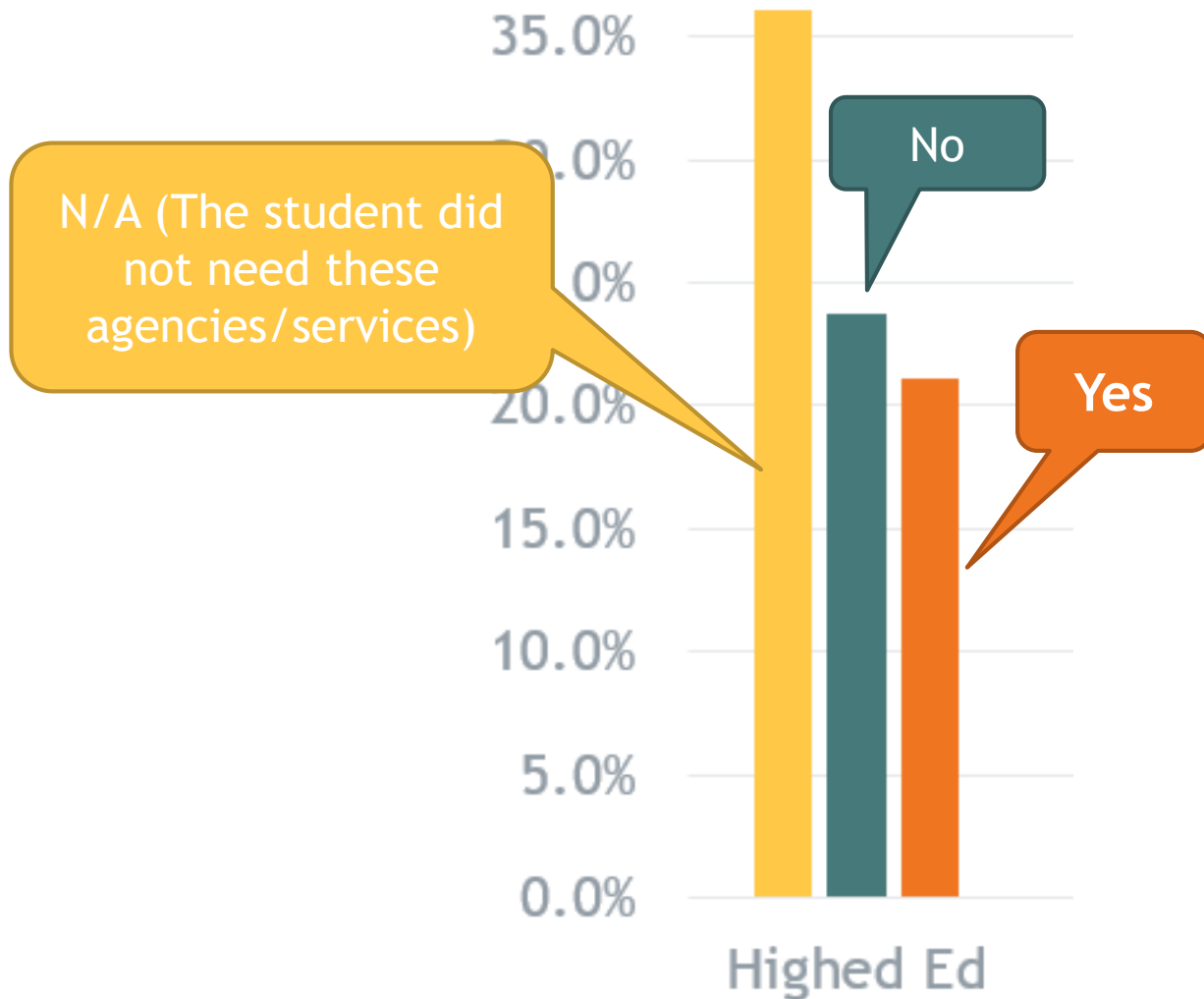


Additional Post-school Supports

Post-school Outcome Interview 2016



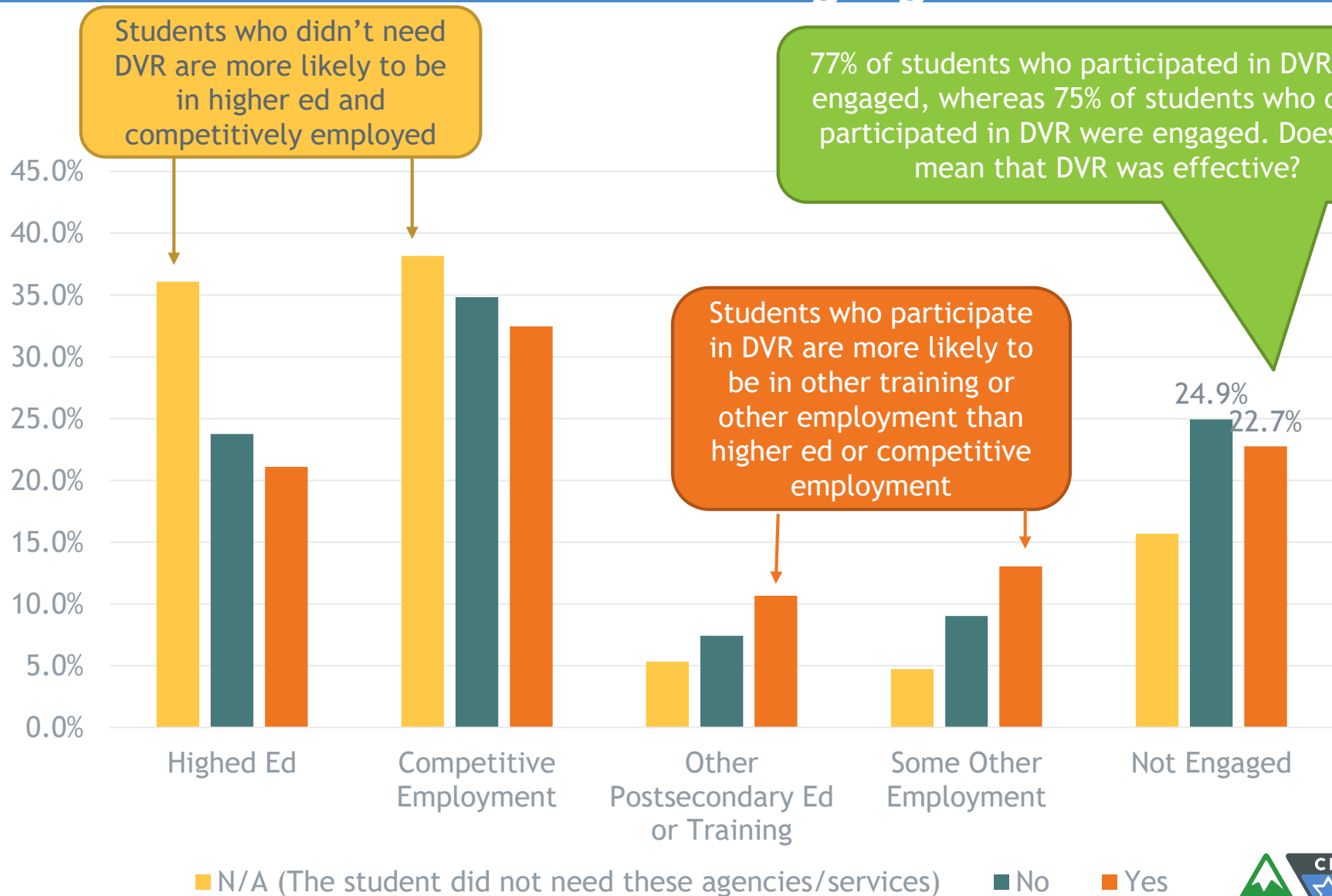
Color Coding for DVR, 18-21 and Adult Agency Slides



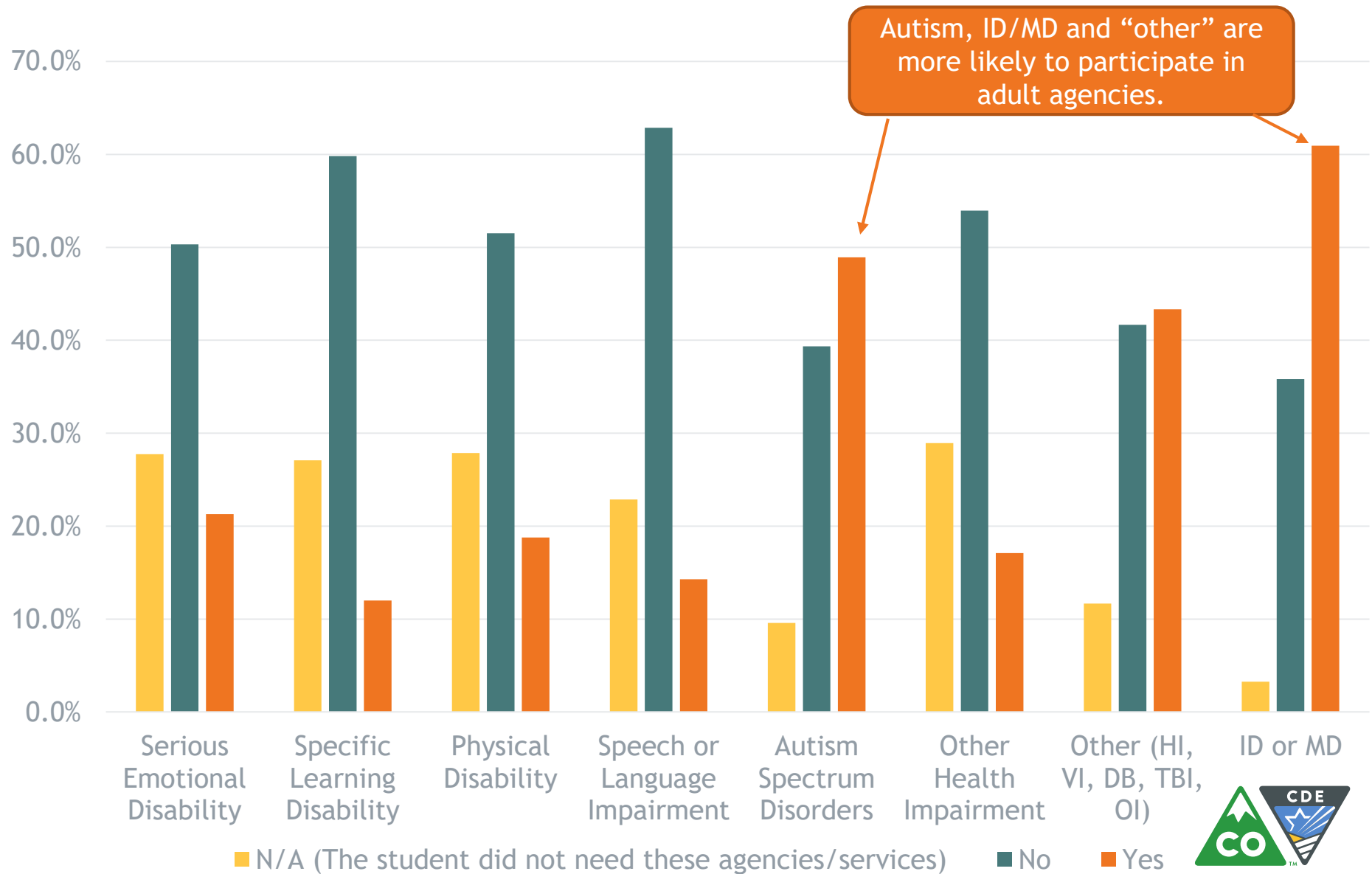
No: the student did not participate in the agencies/services, even though he/she needed them.

Yes: the student participated in the agencies/services.

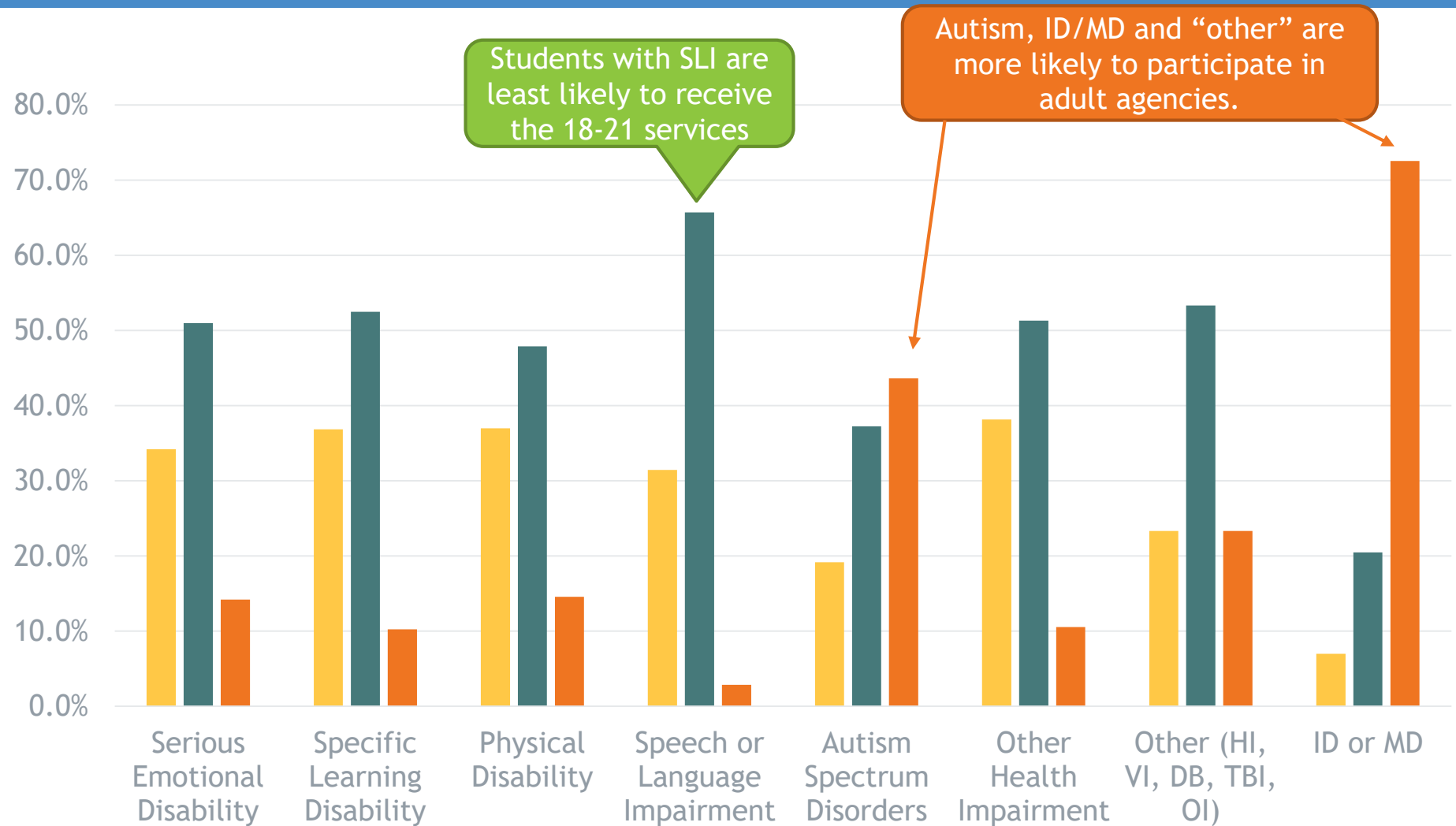
Were students who participated in DVR more engaged?



Did students who needed adult agencies receive them?



Did students who needed 18-21 services receive them?



■ N/A (The student did not need these agencies/service due to on-time graduation)
 ■ No
 ■ Yes



Questions?

- If you'd like to chat about any of the following;
 - the PSO interview contents
 - Secondary transition
 - Increasing graduation and decreasing dropout
 - How to engaged students in the community after they exit high school
- Contact the ESSU Secondary Transition Team!!
 - Gail Lott lott_g@cde.state.co.us
 - Gloria Howell Howell_g@cde.state.co.us
 - Katie Oliver Oliver_k@cde.sate.co.us
- If you'd like to chat about the PSO data, please contact Miki Imura (imura_m@state.co.us)

