

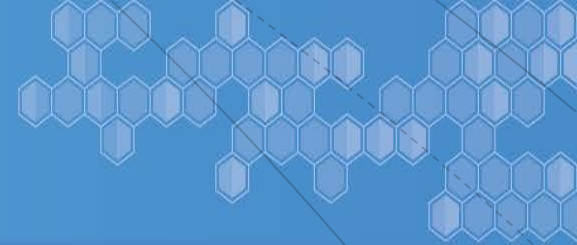
Access, Learning, & Literacy (ALL) Team

The ESSU's Technical Assistance,
Professional Learning, and
Resource Support Team

**New Directors'
Orientation 2021**



COLORADO
Department of Education



**Kids Mean the
World to Us**

**Every Kid, All
Kids ...**

Each Kid

Who We Are



- Consultants in each disability category, special education and related service disciplines
- eLearning Specialists
- Secondary Transition and School to Work Specialists
- Structured Literacy Specialists
- See attached handout for names of ALL Team members, their subject matter expertise, and contact information. This does not include our 30+ Part Time Employees who support our work in the field.

One Federal Grant

**CO Services to Children & Youth with
Combined Vision & Hearing Loss
(aka CO DB Project) .**



- Free customized TA
- Annual Child Count
- DB Webinar Series
- Family Training and Support
- Interveners Preparation / Coaching and Support
- Summer Institute



Three Interagency Agreements

- School to Work Alliance Program (SWAP) – with DVR
- Center for Inclusive Design and Engineering within UCD (formerly CO Assistive Technology Project)
- Colorado Instructional Materials Center (CIMC) on the campus of the Colorado School for the Deaf and the Blind

Key Roles

Training, TA, and Resources

Tiered virtual
and face-to-face
professional
learning and TA

Statewide
Listservs and
Office hours

Develop &
disseminate
resources



Supports During the Pandemic

COVID-19 Resources Specific to Special Education:

<https://www.cde.state.co.us/cdesped>

Learning supports for Students with Disabilities:

<https://www.cde.state.co.us/cdesped/covid19-studentlearning>

Office Hours:

<https://www.cde.state.co.us/cdesped-covid19>

CDE Professional Development

Colorado Department of Education

Professional Development



Posted professional learning content that is ALWAYS available, as well as a calendar of professional development across the school year.

<http://www.cde.state.co.us/cdeprofessionaldevelopment>

ALL TEAM – Focus on Access



- [Center for Inclusive Design and Engineering](#)

SWAAAC

A Center for Inclusive Design and Engineering (CIDE) Project
in Partnership with the Colorado Department of Education



[Loan Library](#)

[Training and Support](#)

www.swaaac.org





ALL TEAM

Focus on ACCESS

Accommodation Manual

Professional learning events / documents are specific to accessibility needs / key in-person and virtual strategies.

Two E Learning Specialists creating online professional learning materials that are accessible anytime, anywhere to anyone.

ALL TEAM - Eligibility

- Guidance documents for eligibility categories:
 - ASD ID/ MD OHI
 - SED SLD SLI
- Toolkit and Statewide Training for the Educational Evaluation of ASD
- Heads up – Visual Impairment, Including Blindness is on the docket for a criteria update.
- Additional assistance by request for specific eligibility categories

Specially Designed Instruction – Affective Needs / SED / Behavior

8-week online course:

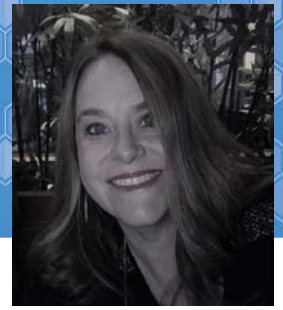
- FBA and BIP Development.
- Social Emotional Learning
- On Demand Webinars
- By Request Trainings that are customized to needs.

https://www.cde.state.co.us/cdesped/sd-emotional_sed_trainings#Other

- CDE is partnering with the Colorado Council for Children with Behavioral Disorders (CCCCBD) providing a 3-part virtual Affective Needs Conference
- 2 days conference on Restorative Practices In November
- Monthly Office Hours, 1st Tuesday of each month starting at 8:00 a.m.



Specially Designed Instruction Autism Spectrum Disorder



Educational Identification of Autism- (Registration Open)

- Round 1 (virtual – 8/24/21); Round 2 (virtual – 10/20/21) and Round 3 (in person in Grand Junction – 3/2/22); Advanced – April 7, 2022

Office Hours – every Friday at 9:00 a.m.

Autism Literacy Institute (Registration Open)

- Tier 1 (Begins 9/29/21 and Tier 2 (Begins 1/18/22)

Tri-State Collaborative (Colorado/Kansas/Nebraska)

- Free webinars (45-60 min)-
- <http://www.cde.state.co.us/cdesped/sd-autism#support>



Specially Designed Instruction – Blindness / Visual Impairment



- Braille Competency Testing / Mentoring
- BVI Office Hours
- CDE State BVI Conference – Science of Reading for BVI
- O&M State Seminar
- Regional Low Vision Evaluation Clinics
- TVI / O&M Specialist Mentors
- Unified English Braille Technical Training

Specially Designed Instruction Deaf and Hard of Hearing



Monthly Statewide Zoom Meetings and Trainings supports the needs of professionals providing services to students who are Deaf and Hard of Hearing

Skills Training for Educational Interpreters , four 7.5 skills on-line trainings provided by CDE for educational interpreters throughout the school year.

D/HH Mentors are provided as requested by the AU to professionals working with DHH students and/or to administrators supervising D/HH programs.

Educational Audiology Collaboration opportunities for educational audiologists to connect across the state.

Specially Designed Instruction – Mental Health (MH)



Technical Assistance & Individualized Coaching

Office Hours - Special Education Evaluation Themed
Regional Meetings for SBMH

Individualized Trainings for Groups

- Special Education Evaluation
- Trauma and Special Education
- Engagement of Families with Disabilities
- Golden Thread Philosophy
- Mental Health Interventions and Supports for SwD
- Progress Monitoring and Data Collection
- Comprehensive model of MH intervention

Specially Designed Instruction – Mental Health (MH) cont.



Large Scale Trainings and PD Opportunities

- Cognitive Behavior Intervention for Trauma in Schools (CBITS)
- Colorado Society of School Psychologist Annual Conference & Summer Institute
- Colorado School Social Work Annual Conference
- Suicide Symposium with the School Safety Resource Center
- Working with Culturally and Linguistically Diverse families during the evaluation process, how to ensure engagement collaboration with the Colorado School Bilingual Mental Health Network

Specially Designed Instruction Speech Language Impairment

Strategies to Write Informational Text for Students support language development for writing informational text (online)

Journal Club four topics for PL communities or individual participation (online)

SLPA Supervision for new supervisors of SLPA (online)

Social Communication and Engagement Triad learn strategies to support the development of communication skills for students with complex communication needs. (online)

Communication Rating Scales instructional videos
(OnDemand)

Live Virtual trainings on Kimochis a social emotional learning method to support the keys to communication by learning new words to express feelings and new strategies to deal feelings

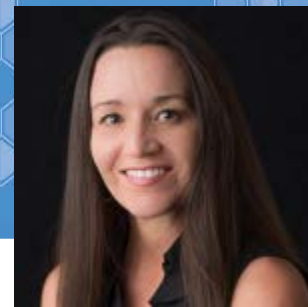


Specially Designed Instruction – Significant Support Needs



- Online Modules on Instructional Strategies
- Book Studies
 - *Comprehensive Literacy for ALL* (5 groups – Fall of 2021)
 - *Behaving to Belonging* (inclusion)
- Dynamic Learning Map Online Professional Development
- Healthy Relationships for Students with SSN: with focus on the Comprehensive Health and Wellness Standards – in collaboration with the SIE Center at Children’s Hospital
- Universal, Targeted, and Customized TA through the SSN Network
- Model Site Development and Maintenance (QIs)
- Capstone for Students with Significant Support Needs Workshop (3 regional sessions – October 2021)

Specially Designed Instruction – Specific Learning Disability



Reading

- Assessing, Preventing and Overcoming Learning Disabilities online professional learning
- Equipped for Reading Success online professional learning

Writing

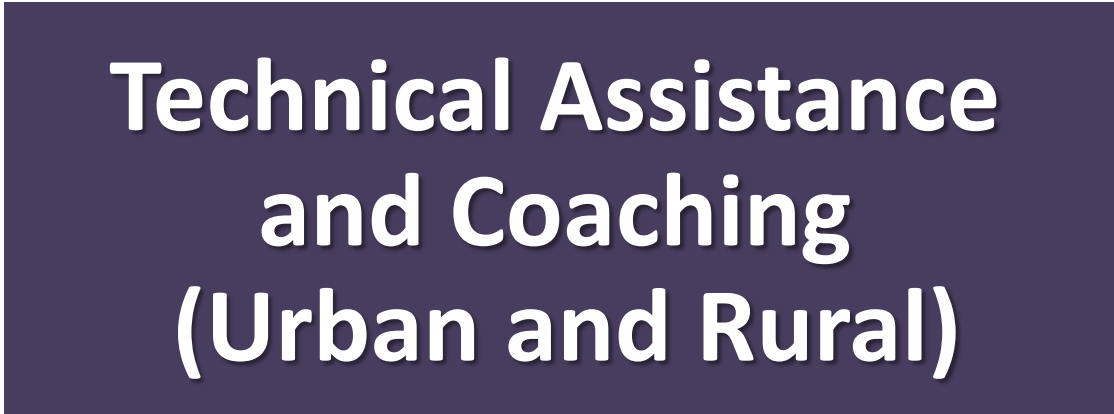
- Strategies to Write Informational Text for Secondary Students

Math

- What About Math? Live and archived webinars
- Mathematics Success for All: Principles to Action for Struggling Learners. An on-demand webinar series

SLD Eligibility

- A Comprehensive Model for Specific Learning Disability Evaluations: Using the *Building Blocks of Brain Development* to Understand and Assess Learning Disabilities (Fall pilot for SPED directors only. Spring 2022 statewide launch)



- 

Personnel Recruitment for AUs!

- Job postings on CDE ESSU listservs
- Job postings with national organizations
- Work, as invited, with Human Resource personnel in Colorado AUs
- Support of preservice program requirements and development



Our Goal – What is Helpful to You!

- Please encourage your staff to participate in ALL Team trainings and Office Hours. They are advertised on the CDE website and across ESSU listservs.
- Be in touch with recruitment and retention needs.
- Let us know your customized training and TA needs. We are currently working closely with the general supervision efforts. Extra trainings are tied to FTE and funds.

