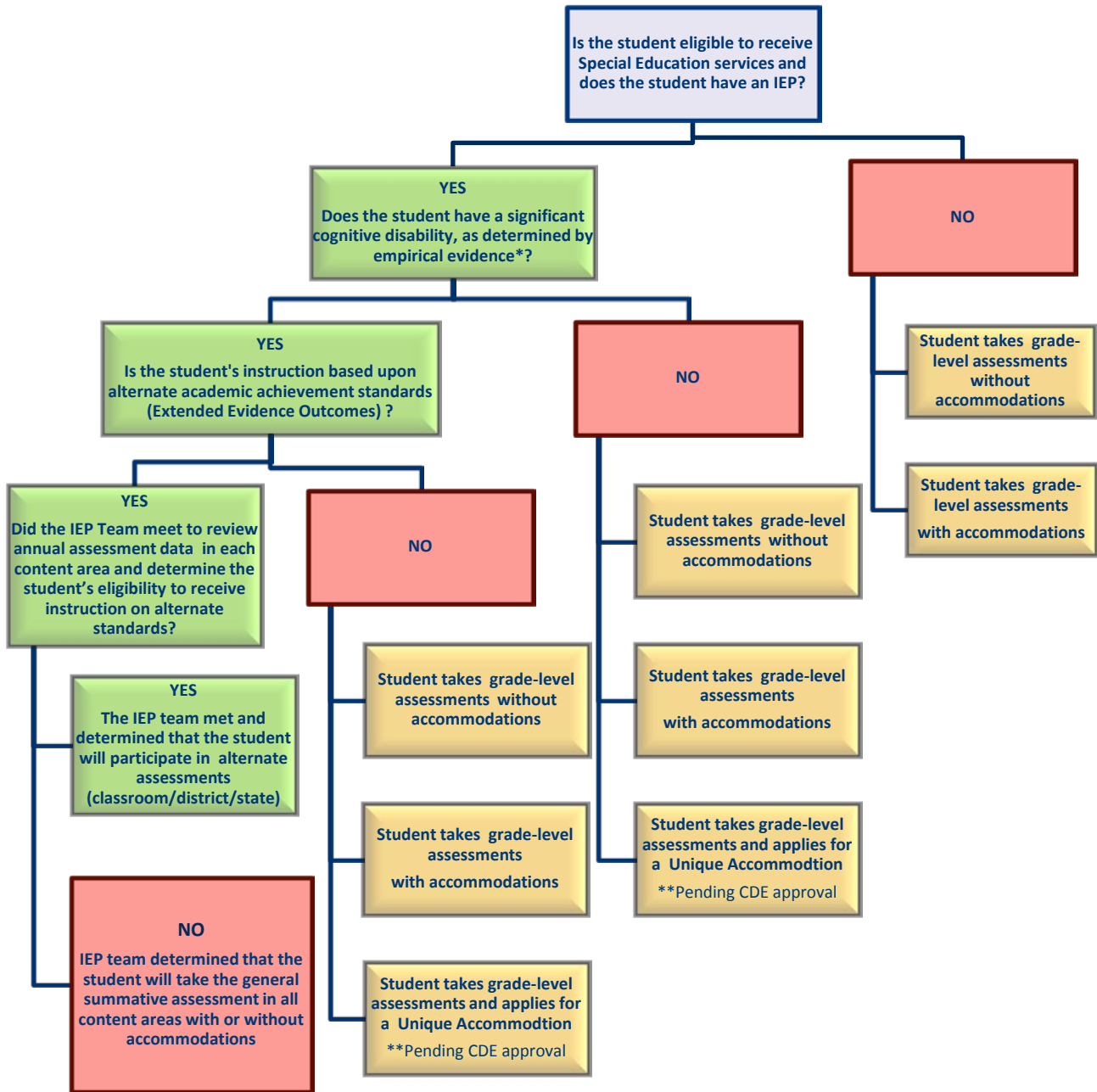


Decision-Making Process Flow Chart for Determining Academic Achievement Standard and Participation in Alternate Assessment based on Alternate Academic Achievement Standards



*Empirical Evidence may include, but is not limited to, standardized educational testing, professional evaluation data, and evaluation instruments deemed valid by the professional field.

** **“Pending CDE approval”** is to be documented in the assessment accommodation section of the IEP and the appropriate form submitted to CDE for Unique Accommodation Requests.