

Colorado Department of Education



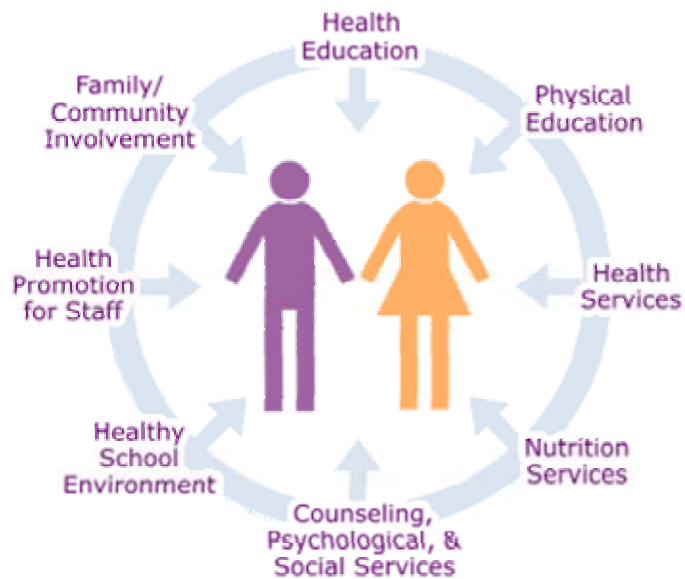
A Closer Look at the 8 Components of Coordinated School Health

The coordinated school health model consists of eight interactive components. A coordinated school health program consists of eight components: health education, physical education, health services, nutrition services, health promotion, counseling, environment and family and community. Schools by themselves cannot, and should not be expected to, address the nation's most serious health and social problems.

Families, health care workers, the media, religious organizations, community organizations that serve youth, and young people themselves also must be systematically involved. However, schools could provide a critical facility in which many agencies might work together to maintain the well-being of young people.

The state of Colorado has awarded grants to Summit County School District, Boulder School District, and East Grand School District to establish state models of coordinated school health.

Coordinated school health programs, as conceived and promoted by the Centers for Disease Control and Prevention's Division of Adolescent and School Health (CDC-DASH) and adopted by the Colorado Department of Education, consist of eight interactive components.



Visit: <http://www.cde.state.co.us/cdeprevention/index.htm>