

Feedback Site

BEST Statewide Facility Assessment

Here's how to access your school's facility assessment reports online:

To login, direct your Internet Explorer browser window to the following url:

<http://comet.parsons.com/eCOMET/code/feedback/default.asp?db=Colorado%20DOE>

Database name: Colorado DOE

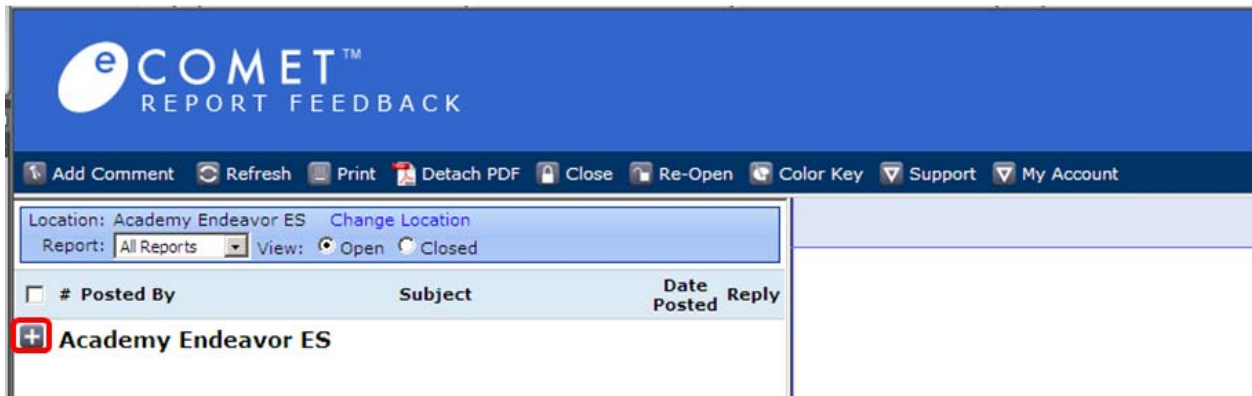
Your username is as follows: Initial of your first name and last name all in lower case (as an example for Sara Jones Username would be: sjones)

Contact the database administrator listed below for your password.

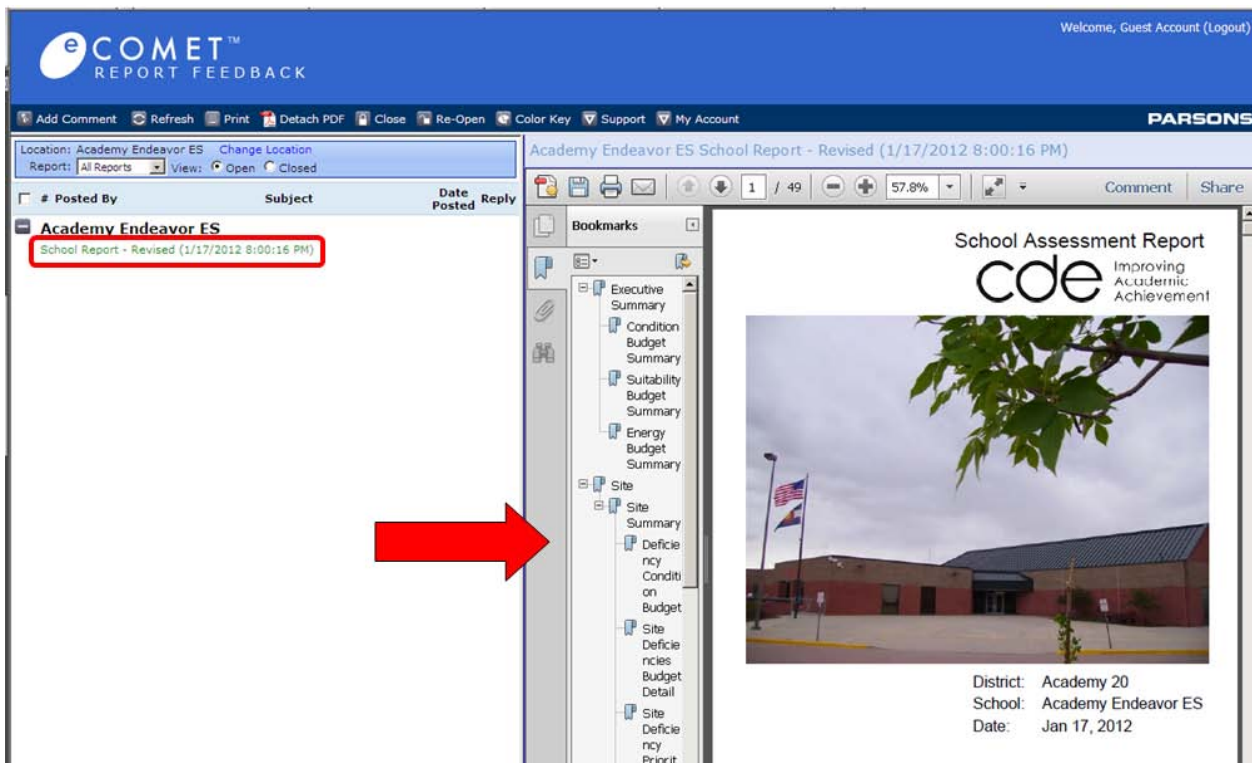
Once you've logged in, you can start reviewing your report and adding comments. Simply select change your location on the left and select your district, then your school.

The screenshot displays the eCOMET Report Feedback web application. The main interface has a blue header with the eCOMET logo and the text 'REPORT FEEDBACK'. Below the header is a navigation bar with icons for 'Add Comment', 'Refresh', 'Print', 'Detach PDF', 'Close', 'Re-Open', 'Color Key', 'Support', and 'My Account'. The main content area shows 'Location: Academy Endeavor ES' and a 'Change Location' button. Below this is a table with columns for '#', 'Posted By', and 'Subject'. The table contains one entry for 'Academy Endeavor ES'. A 'Select Location' dialog box is open, showing a tree view of locations. The tree view starts with 'CDE' and includes 'Academy 20', 'Tier2', and 'Academy Endeavor ES' (which is highlighted with a red box). Other locations listed include 'Academy Intl Bac ES', 'Air Academy HS', 'Antelope Trails ES', 'Aspen Valley HS', 'Challenger MS', 'Chinook Trail ES', 'Da Vinci Academy (ES)', 'Discovery Canyon Campus', 'Douglass Valley ES', 'EAC', 'Eagleview MS', 'Edith Wolford ES', 'Explorer ES', 'Foothills ES', 'Frontier ES', 'High Plains ES', 'Liberty HS', and 'Mtn Ridge MS'.

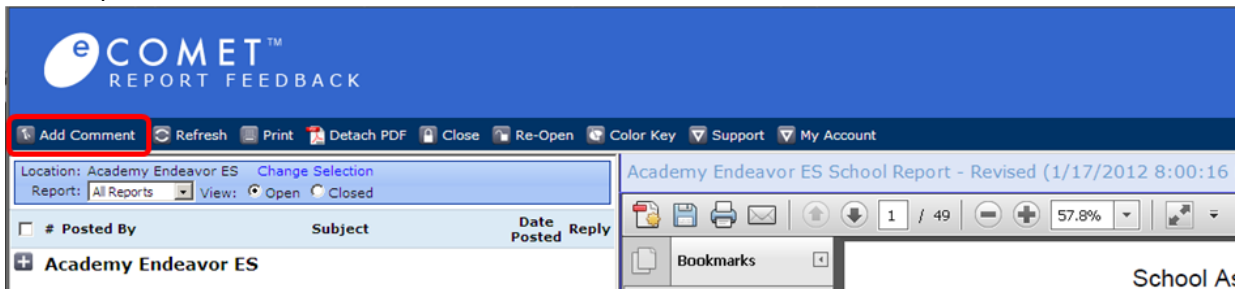
Once you have selected a location, click on the plus next to the school name to view a list of reports.



Click on the report you would like to view. It will be loaded in the reading pane on the right.

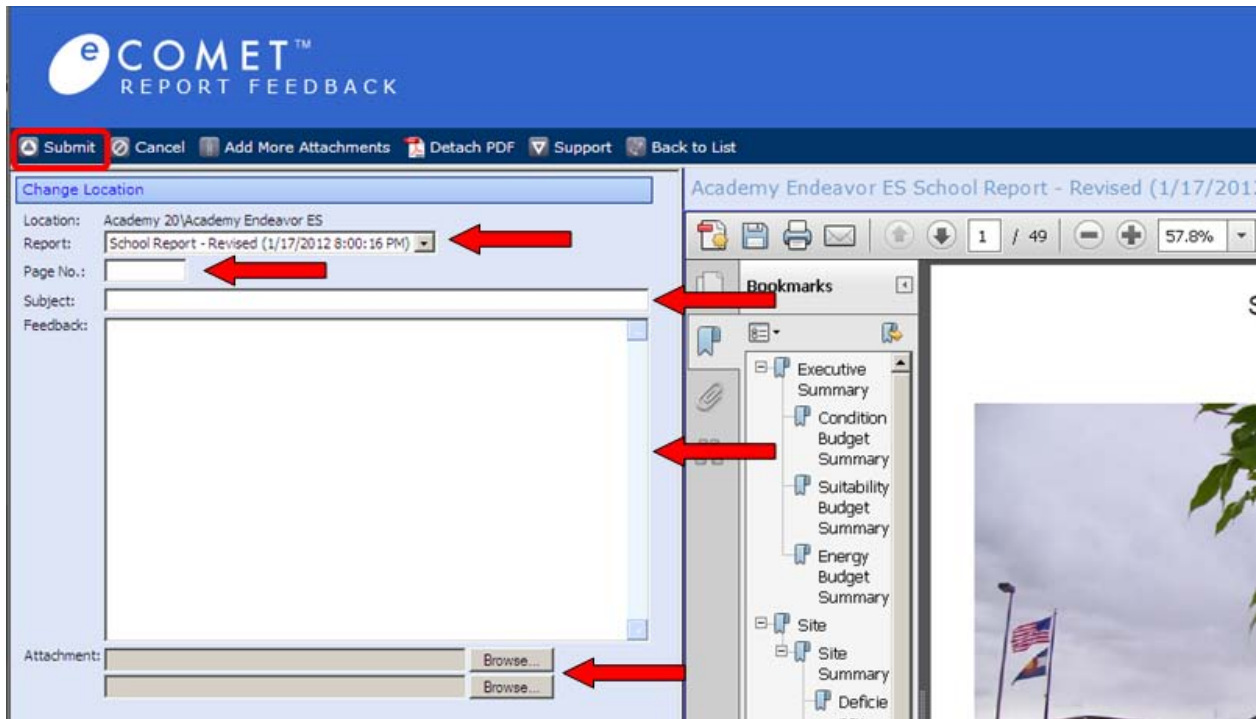


Review the report, and when you're ready to make comments, click on the "Add Comment" button located in the top left hand corner of the main toolbar.

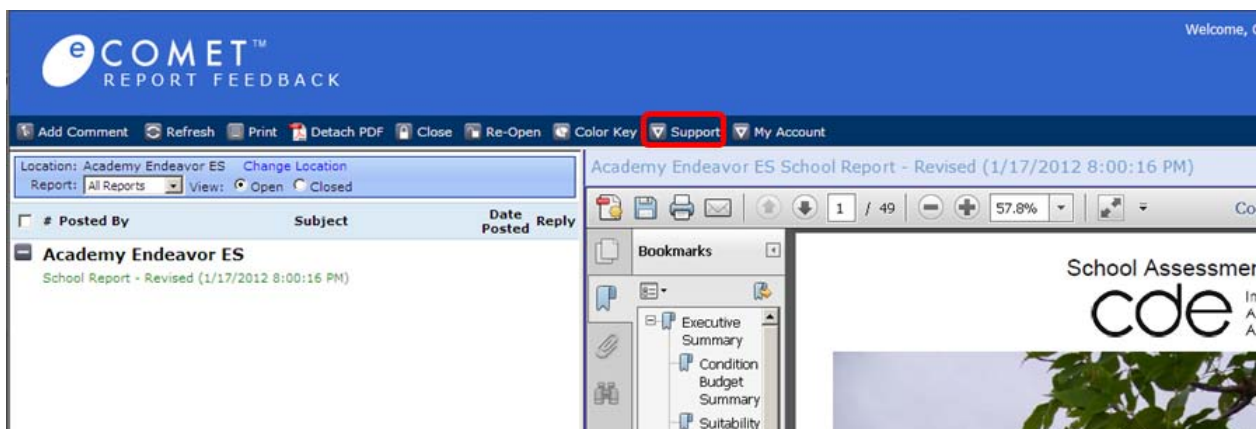


The comment screen will be loaded, and will allow you to fill out the appropriate information, **be sure** that the appropriate report is selected in the dropdown. Also **be sure to include:** the page number you're referring to, a subject and your comment. Attachments can also be added if necessary such as pictures of the deficiency or a professional study to reinforce the comment. When finished click on "Submit" in the upper left hand corner of the main toolbar.

THERE IS NO NEED TO COMMENT ON SECTIONS OF THE REPORT THAT YOU AGREE WITH.



For further Help, please click on the "Support" button on the main tool bar. You will find a Start Guide, FAQ, Glossaries and Unifomat information here.



If you have trouble accessing the database:

CHECK YOUR INTERNET SETTINGS:

- a. COMMENTS is only supported in MS Internet Explorer 6 or better as a web browser. If you use another browser such as Safari, FireFox, etc, you will not be able to access the database.
- b. INTERNET EXPLORER: Check your security settings. Go to TOOLS / POP UP BLOCKER and turn it OFF.
- c. Go to TOOLS / INTERNET OPTIONS and click on TRUSTED SITES on the Security tab. Click on the SITES button and ADD a Site. Type http://*.parsons.com and add it to your trusted sites. Click close to exit.
- d. Close your IE browser and reopen.
- e. Click on this link and launch <http://comet.parsons.com/eCOMET/code/feedback/default.asp?db=Colorado%20DOE>

If this fails to correct the problem, then we believe it is an internal issue on your end. Please contact your IS manager and see if your internal IE access is limited to certain sites, or if your firewall is restricting COMET access as a blocked site. Check to see if you can access the COMMENTS site from your home personal computer – if you are successful from home, this will almost certainly then point to a school firewall restriction.

If you have additional questions don't hesitate to contact the database administrator:

Dustin Guerin, LEED AP BD+C
Senior Consultant
Division of Capital Construction Assistance
Colorado Department of Education
1525 Sherman St., Suite B17
Denver, CO 80203
P: (303)866-6263
F: (303)866-6186
guerin_d@cde.state.co.us
www.cde.state.co.us/cca