



COLORADO
Department of Education

Introduction to English Language Learner Count Funding Factor Audit

School Auditing Office

Date: **9/13/2021**

Detailed Agenda

1. Who is the School Auditing Office?
2. 2021 Student October Count Date
3. English Language Learner Funding Factor
4. English Learners
5. English Language Learner Count Audit Process and Documentation



Who is the School Auditing Office?

The School Finance Unit at CDE:

- Calculates the “Total Program” funding based on district-reported data included in the yearly Student October Count data submission
- Calculates the Transportation reimbursement based on the CDE-40 data submitted yearly in September

Within School Finance, **the School Auditing Office:**

- Conducts compliance audits verifying that the data reported by districts in those data collections was accurate
- Provides technical guidance and support to districts throughout the year

2021 Student October Count Date

Student October Count Day 2021

The 2021 pupil enrollment count date will be:

Friday, October 1, 2021

September							October							November						
Su	Mo	Tu	We	Th	Fr	Sa	Su	Mo	Tu	We	Th	Fr	Sa	Su	Mo	Tu	We	Th	Fr	Sa
			1	2	3	4						1	2		1	2	3	4	5	6
5	6	7	8	9	10	11	3	4	5	6	7	8	9	7	8	9	10	11	12	13
12	13	14	15	16	17	18	10	11	12	13	14	15	16	14	15	16	17	18	19	20
19	20	21	22	23	24	25	17	18	19	20	21	22	23	21	22	23	24	25	26	27
26	27	28	29	30			24	25	26	27	28	29	30	28	29	30				
							31													

The 11-day count window extends from **9/24/21 – 10/8/21** for districts operating a 5-day school week

- Districts with scheduled days off during this time and/or a 4-day school week must adjust accordingly

The alternative preschool count date will be **Monday November 1, 2021** (for districts who elect to use it)

Alternative Count Date

- The deadline to request an alternative count date is Wednesday, September 15, 2021
- Request should be submitted to Kate Bartlett (bartlett_k@cde.state.co.us) via email
- Request should include:
 - The reason why the district or school is requesting the alternative count date.
 - The proposed alternative count date.
 - The corresponding proposed 11-day count period.
 - A copy of the district and or school calendar.

English Language Learner Funding Factor

Background

- SB21-268 was signed on June 11, 2021
- Makes changes to the Public School Finance Act of 1994 (school funding formula)
- One of those changes is the new “English language learner funding factor” that is now included in the school finance formula for total program funding
 - Total program funding now includes per pupil funding + at-risk funding + ELL funding, etc...
- The School Auditing Office will include the district’s English Language Learner count in the periodic compliance audits of each district’s Student October count data, starting with FY2021/2022
 - Students coded as English Learners will be sampled randomly
 - The district will provide **documentation** to support the determination of language proficiency

Criteria

Students must meet the criteria in both boxes below to be included in the ELL Count:

Student October Count data:

- Grade level: K-12
- Funding codes: 80, 82, 85, 91, 92, 94, 95
- Language Proficiency:
 - 1 - NEP (Non-English Proficient)
 - 2 - LEP (Limited-English Proficient)

Not specifically reported in the Student October Count:

- Students must still be within the five-year services window defined in ELPA
 - Districts may not have visibility into five-year timelines, as this is tracked at the state level

English Learners: Identification and Assessments

Disclaimer



When identifying English Learners (ELs) and reporting their English language proficiency level, districts must follow Colorado's Standardized Requirements and Processes for the [Identification](#) and [Redesignation](#) of English learners.



For information about services for ELs, please refer to CDE's [English Language Development Guidebook](#) and [Provisional Identification Procedures](#) documents.



The guidance in the ELL Count Audit Resource Guide is not intended to supersede or contradict any program-specific guidance; the intent of the Guide is to outline documentation requirements that are subject to audit.



Further, the documentation provided at the time of audit should be compiled from the district's already-existing body of evidence (i.e., districts should not be creating new documentation specifically for English Language Learner (ELL) Count audit purposes).

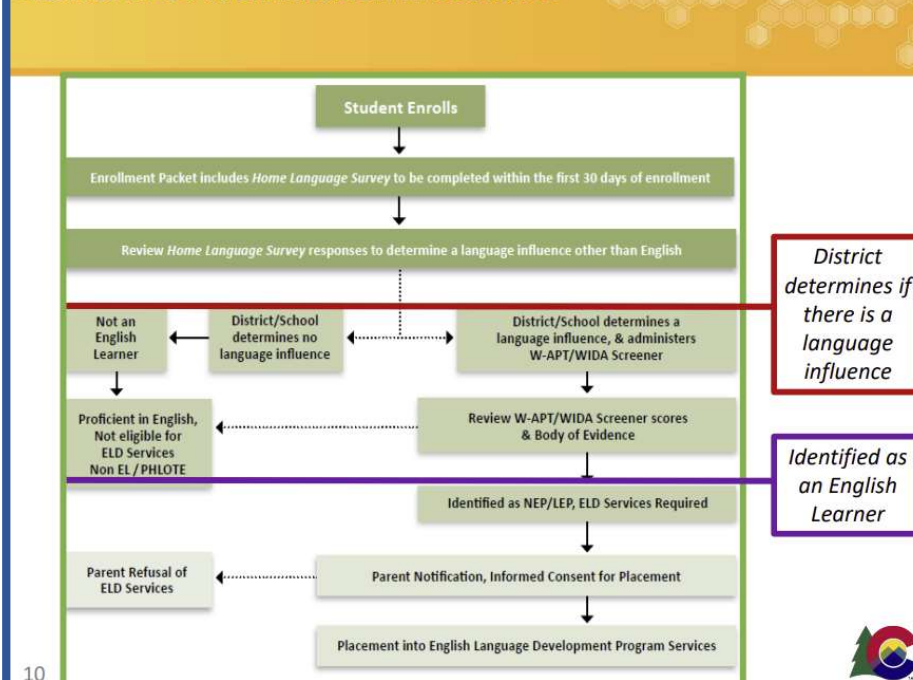
EL Identification and Coding Training

For more information about the EL identification process, please refer to the “Colorado English Learner Identification & Data Coding” training:

http://www.cde.state.co.us/DataPipeline/snap_studentOctober.asp

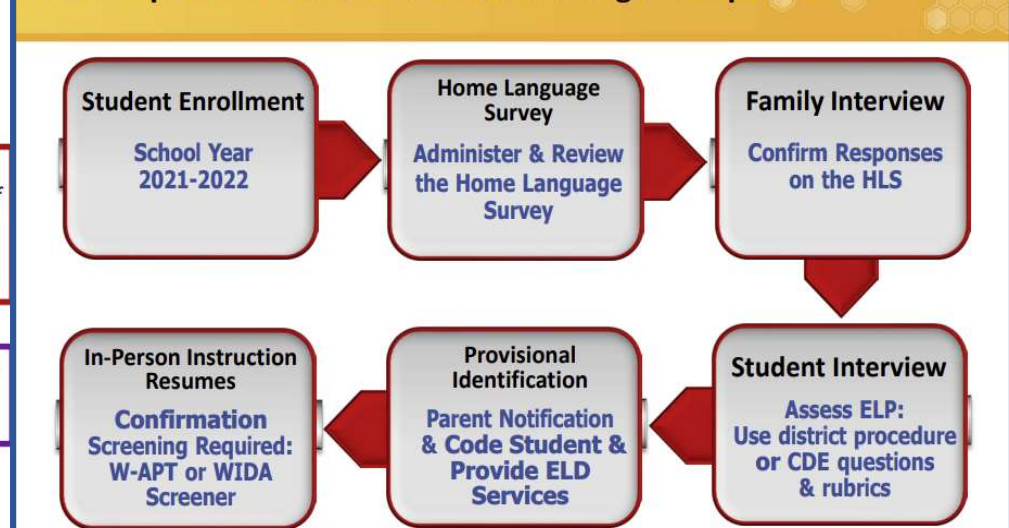
<http://www.cde.state.co.us/datapipeline/elcodingwebinar>

Standardized Identification Procedures



Interim Identification Procedures

When in-person Standardized EL Screening is not possible



Districts that are subject to settlement agreements or consent decrees relating to English learners must seek guidance from the district's legal counsel as to whether the provisional procedures would be consistent with the terms of the applicable agreement/deed.



English Learner Identification, Coding & Assessment Contacts

- **ELD Programs**

- Visit www.cde.state.co.us/cde_english
- **Morgan Cox** at cox_m@cde.state.co.us
- **Doris Brock-Nguyen** at brock-nguyen_d@cde.state.co.us

- **EL Data Coding & Reporting**

- Visit http://www.cde.state.co.us/datapipeline/snap_studentoctober
- Visit http://www.cde.state.co.us/datapipeline/inter_student

- **Assessment Office (ACCESS/ALT ACCESS)**

- Visit <http://www.cde.state.co.us/assessment/ela>
- **Heather Villalobos Pavia** at villalobospavia_h@cde.state.co.us

English Language Learner Count Audit Documentation & Resources

ELL Count Website and Audit Resource Guide


https://www.cde.state.co.us/cdefinance/auditunit_ell_count

[Home » School Auditing Office](#)

English Language Learner Count

SCHOOL AUDITING OFFICE

English Language Learner Count



2021 Count Date: Friday, October 1

Summary

Each year all public school districts across the state of Colorado participate in the Student October Count data submission to the Colorado Department of Education (CDE). The purpose of this data collection is to obtain required student-level data as provided for by state statute, including information regarding students' funding eligibility as outlined in the Public School Finance Act of 1994 (Section 22-54-101, C.R.S.). The Colorado Department of Education collects these data through the Data Pipeline with the Information Management Services (IMS) unit of CDE overseeing the collection.

School Finance Division Home

School Auditing Office

[At-Risk Count](#)

[English Language Learner Count](#)

[Pupil Count](#)

[Transportation](#)

[Training and Office Hours](#)

[Contact Us](#)

Capital Construction

Grants Fiscal

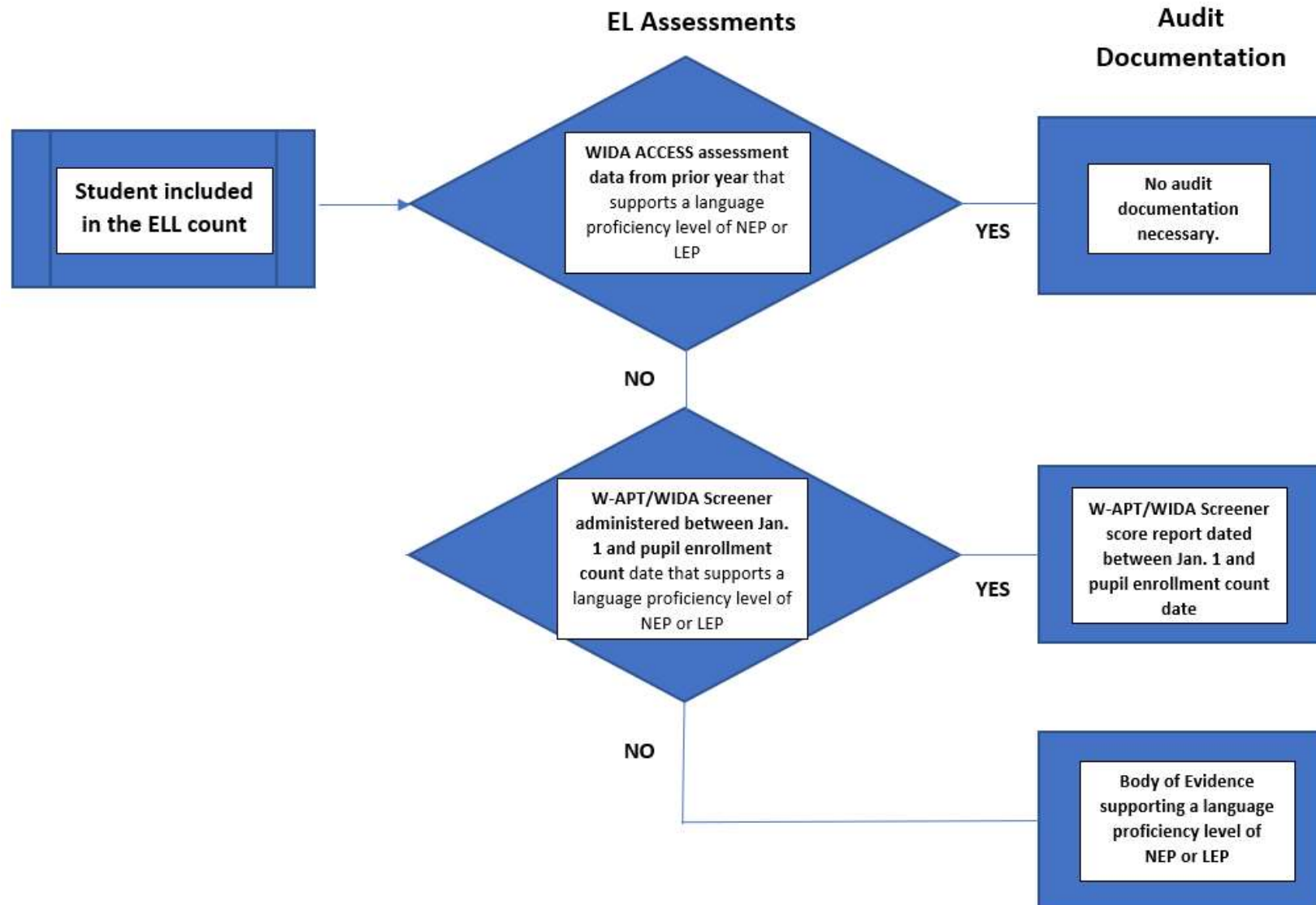
School Nutrition (OSN)

School Transportation

About Us

Contact Us

ELL Count Audit Documentation Flowchart



English Language Learner Count Audit & Funding Factor Contacts

- English Language Learner Count- Audit
 - School Auditing Office
 - audit@cde.state.co.us
 - Rebecca McRee, School Auditing Office Supervisor
 - mcree_r@cde.state.co.us
- English Language Learner Count- Funding Factor
 - Tim Kahle, School Finance Program Director
 - Kahle_t@cde.state.co.us

Questions?