

## Alternate Assessment Eligibility Criteria Worksheet

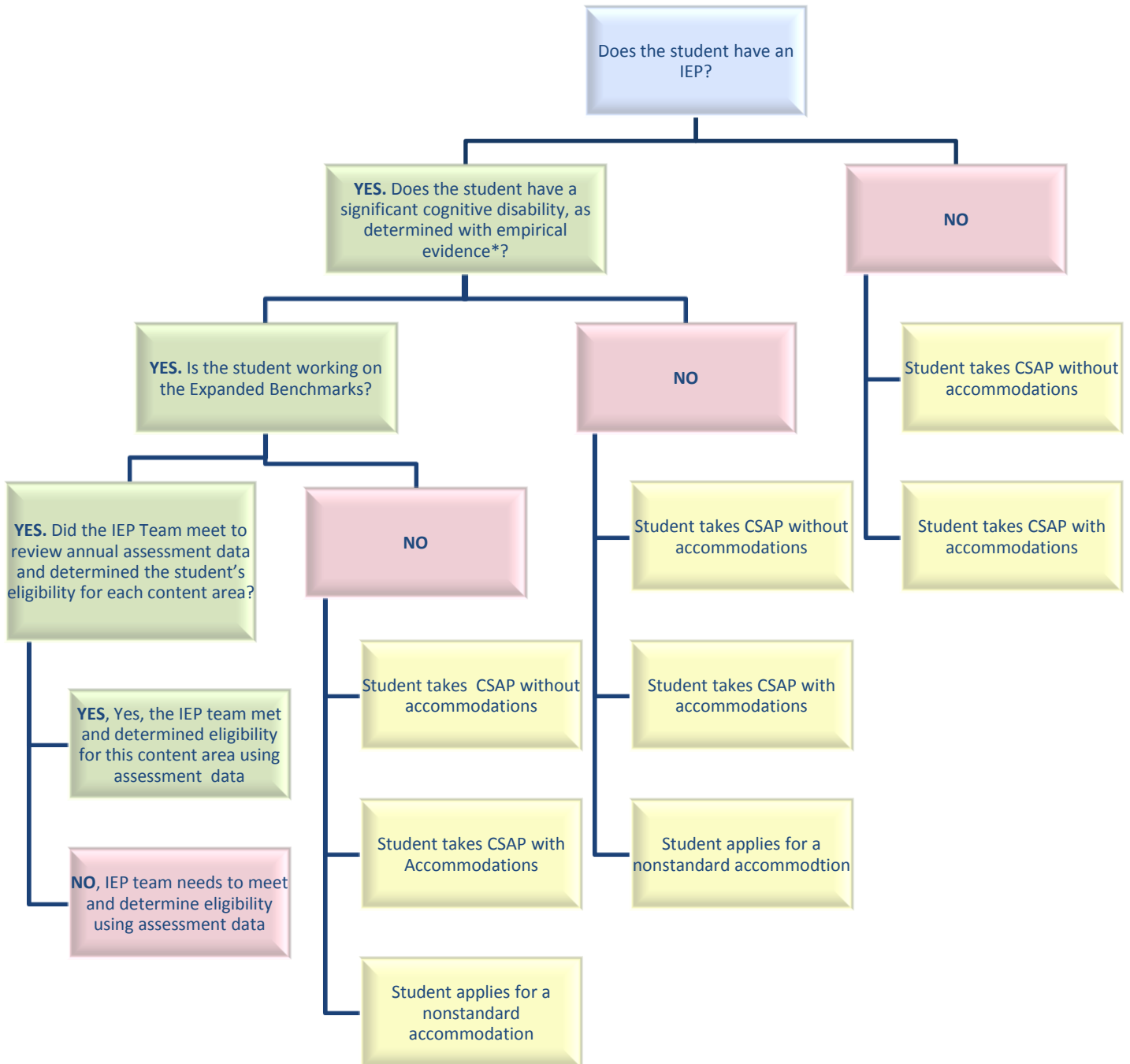
In order to be eligible for an alternate assessment in Colorado (CSAPA, 11<sup>th</sup> Grade Alternate, district alternates, etc.) all of the following criteria must be met for each content separately and on an annual basis.

<b>Criteria #1:</b>	<b>Response</b>		
Does the student have an Individualized Education Program (IEP)?	<input type="checkbox"/> Yes. Continue on to Criteria #2. <input type="checkbox"/> No. Stop here, the student does not qualify for alternate assessments.		
<b>Criteria #2:</b>	<b>Response</b>		
<p><b><u>Evidence of a Significant Cognitive Disability</u></b>            The student exhibits a significant cognitive disability as determined through empirical evidence (educational testing results, evaluation team results, etc.) and it is documented on the IEP. Students who qualify will have significant cognitive impairments, commensurate abilities in the content areas and adaptive behavior impairments.</p> <p>* Note: Students with overall cognitive and/or adaptive behavior abilities within the average range are not considered significantly cognitively disabled.</p>	<input type="checkbox"/> Yes. Continue on to Criteria #3. <input type="checkbox"/> No. Stop here, the student does not qualify for alternate assessments.		
<b>Criteria #3:</b>	<b>Reading/ Writing</b>	<b>Mathematics</b>	<b>Science</b>
Is the student working on the Expanded Benchmarks (alternate standards)?	<input type="checkbox"/> Yes for reading/writing. Continue on to Criteria #4. <input type="checkbox"/> No. Stop here, the student does not qualify for an alternate assessment	<input type="checkbox"/> Yes for mathematics. Continue on to Criteria #4. <input type="checkbox"/> No. Stop here, the student does not qualify for an alternate assessment	<input type="checkbox"/> Yes for Science. Continue on to Criteria #4. <input type="checkbox"/> No. Stop here, the student does not qualify for an alternate assessment
<b>Criteria #4:</b>	<b>Reading/ Writing</b>	<b>Mathematics</b>	<b>Science</b>
Did the IEP Team meet to review annual assessment data and determine the student's eligibility for each content area?	<input type="checkbox"/> Yes, the IEP team met and determined eligibility for this content area using assessment data <input type="checkbox"/> No. Student will take the regular assessment with or without accommodations	<input type="checkbox"/> Yes, the IEP team met and determined eligibility for this content area using assessment data <input type="checkbox"/> No. Student will take the regular assessment with or without accommodations	<input type="checkbox"/> Yes, the IEP team met and determined eligibility for this content area using assessment data <input type="checkbox"/> No. Student will take the regular assessment with or without accommodations

# Flow Chart to Determining Alternate Assessment Eligibility

(CSAPA, 11<sup>th</sup> Grade Alternate, District Alternate)

Please note: eligibility must be determined individually for each content area being assessed



**\* Note: Students, who have a significant cognitive impairment, will also have commensurate abilities in the content areas and adaptive behavior impairments.**