

Measuring Student Progress for over 40 Years!

Since 1964, NAEP has been the only ongoing nationally representative indicator of what American students know and are able to do in key subject areas.

Also known as *The Nation's Report Card*, NAEP strives to be inclusive of all students.

The first national assessments were conducted in 1969. Voluntary assessments for states began in 1990. In 2003, NCLB mandated NAEP grades 4 and 8 Reading and Mathematics Assessments.



NAEP 2009 is Coming!

Who will take NAEP? NAEP 2009 will be administered to a statewide sample of students in grades 4, 8, and 12. The No Child Left Behind (NCLB) Act mandates that selected districts and schools participate in the grades 4 and 8 reading and mathematics assessments. Pam A. Sandoval, the Colorado NAEP State Coordinator at CDE, notified the selected district superintendents, DACs and administrators in May and June of their selection for 2009 NAEP.

What will NAEP assess? In 2009, NAEP will give paper-pencil operational and field assessments in the subjects of Mathematics, Reading Science in grades 4, 8 and 12. A small number of schools will be assessed in Civics, U.S. History and Geography and either with a hands-on or interactive computer test in Science.

When will NAEP be administered?

Assessment Window
1/26/2009 – 3/6/2009

Where can you find additional information? Contact Pam A. Sandoval, Colorado NAEP State Coordinator, at 303-866-6643 or via e-mail at sandoval_p@cde.state.co.us or visit the Colorado NAEP web site at:

http://www.cde.state.co.us/cdeassess/documents/NAEP/index_naep.html

NAEP: Myth or Truth?

Myth: The NAEP State Coordinator selects the districts/schools to be assessed.

Truth: The national office under the U.S. Department of Education uses a *Sample Design* which consists of all of the counties in the U.S.A. These are aggregated and then certain ones are chosen based upon a number of variables, i.e., location, population, percent of minority students. No school with eligible students is screened out.

Myth: The school must provide testing administrators and proctors for the assessments

Truth: No school personnel are required to give the tests. NAEP contracts and trains all testing administrators and proctors who administer the assessments at all participating schools.

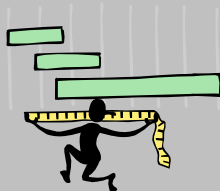
Myth: The NAEP assessment is an all-day test and students test in all subjects.

Truth: The test only takes about 90 minutes, (Science up to 120 minutes) including set up and test collection. Each student takes only one subject test.

Find out more about CO NAEP:

http://www.cde.state.co.us/cdeassess/documents/NAEP/index_naep.html

Learn more about
NAEP:



ONLINE

National Center
for Education
Statistics (NCES):

[http://nces.ed.gov/
nationsreportcard](http://nces.ed.gov/nationsreportcard)

National
Assessment
Governing Board:

www.nagb.org

CONTACT:

Pam A. Sandoval
Colorado NAEP
State Coordinator

Colorado Department
of Education
201 E. Colfax Avenue
Rm.503
Denver, CO 80203

Phone:
303 866-6643

Fax:
303 866-6680

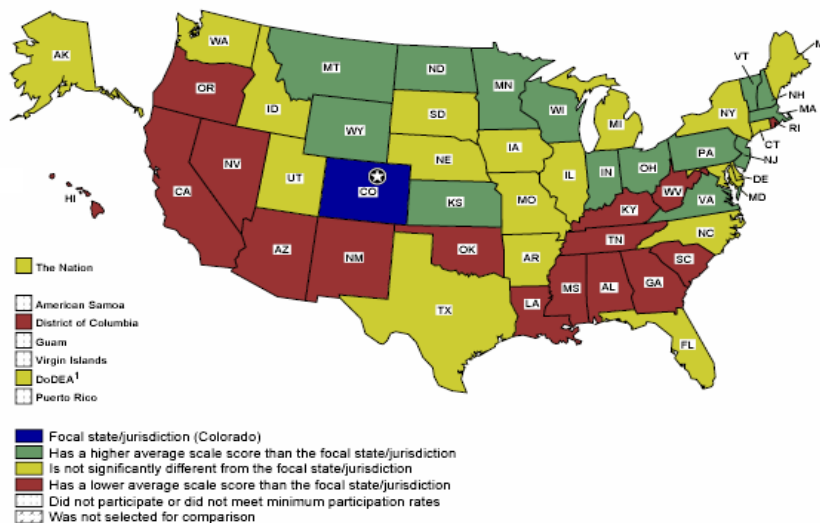
E-mail:
[sandoval_p@cde.state.
co.us](mailto:sandoval_p@cde.state.co.us)

How does Colorado compare?

NAEP data is reported in a variety of formats that show student performance using scale scores, percentiles, and percentages of students at achievement levels by states.

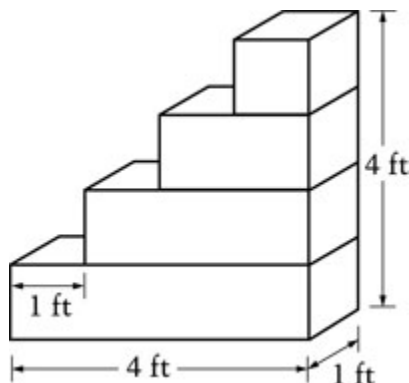
Grade 4 Math 2007: Average Scale Score

NAEP Mathematics Grade 4 - Mathematics
Difference in Average Scale Score Between Jurisdictions
For All students [TOTAL] = All students
2007



¹ Department of Defense Education Activity schools (domestic and overseas).
SOURCE: U.S. Department of Education, Institute of Education Sciences, National Center for Education Statistics, National Assessment of Educational Progress (NAEP), 2007 Mathematics Assessments.

Sample Grade 4 Math Question:



Sierra built the block tower with 1-foot cubes. How many cubes did she use?

- A) 4
- B) 6
- C) 8
- D) 10