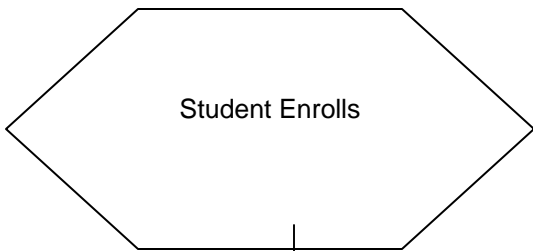


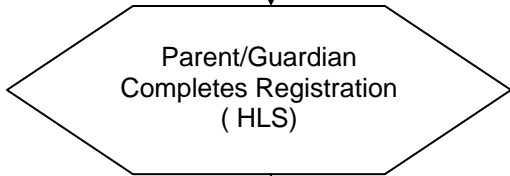
# IDENTIFICATION FLOW CHART

**Step#1**



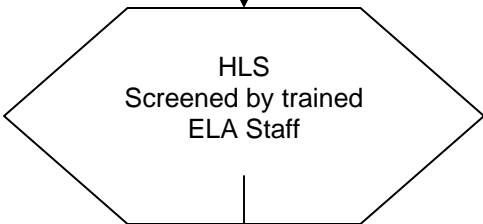
- Are there individuals in district enrollment staff trained in cultural mediation?
- Bilingual enrollment staff?
- **All** students have the right to enroll in public K-12 schools (Plyler V. Doe)

**Step #2**



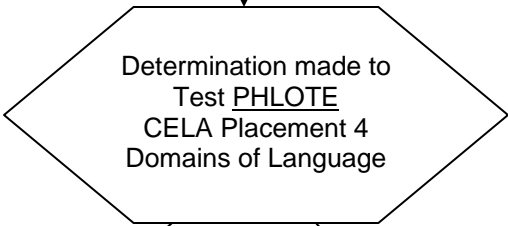
- HLS can be a part of enrollment forms.
- Must be given to all students upon enrollment
- Are there forms translated into other languages? Top 5 in district.

**Step #3**



- Trained Staff to review HLS

**Step #4**



- PHLOTE = Primary Home Language Other Than English.
- If HLS triggers "language dominance other than English" –use CELA Placement Test **Plus** other bodies of evidence to determine language proficiency and appropriate services.

**FEP – If the CELA Placement test results (plus bodies of evidence) determine “FEP” for language proficiency, then no ELA services need to be provided.**

**LEP/NEP – If CELA Placement Test results (plus bodies of evidence) determine NEP or LEP for level of language proficiency, then the district must provide ELA services. Parents must be notified.**