



On the Road to Proficiency: Evidence from Colorado's Growth Model

2008 ELA Academy
April 18, 2008

Dianne Lefly, PhD
Colorado Department of Education



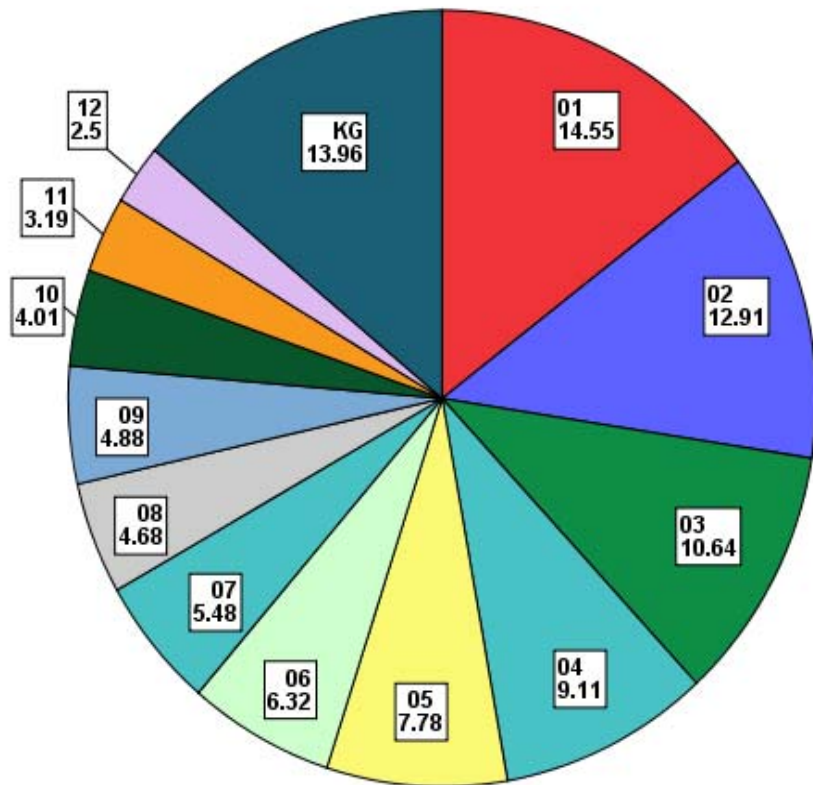
Today's Path

- What the 2008 CELA Results tell us about Colorado's English Language Learners
- What the 2007 CSAP results tell us about Colorado's English Language Learners
- What Colorado's Growth Model tells us about English Language Learners

English Language Learners in Colorado

- The CELA 2008 was administered to 85,085 students in kindergarten through 12th grade
 - (2007=85,997; decline 1.06%)
- 21.9% of the students tested in 2008 were in Denver Public Schools
 - (2007=22.5%; decline 0.6%)
- 14.1% of the students tested in 2008 were in Aurora Public Schools
 - (2007=14.0%; increase 0.1%)

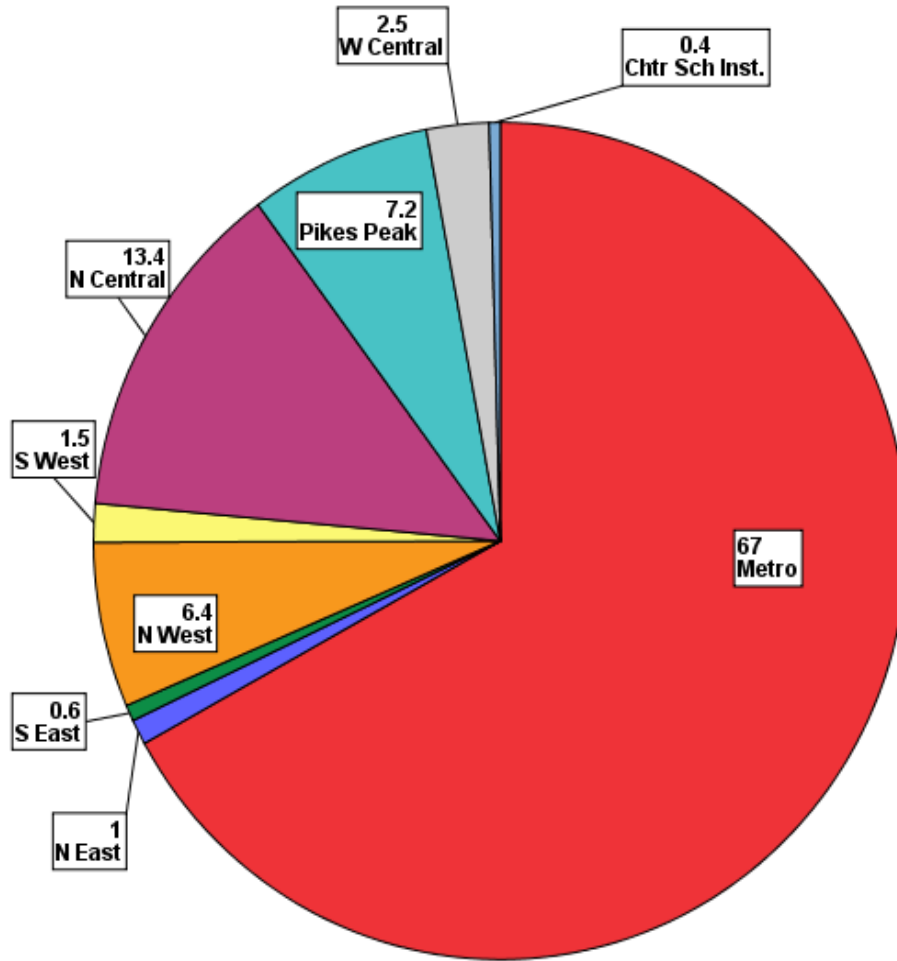
English Language Learners by Grade



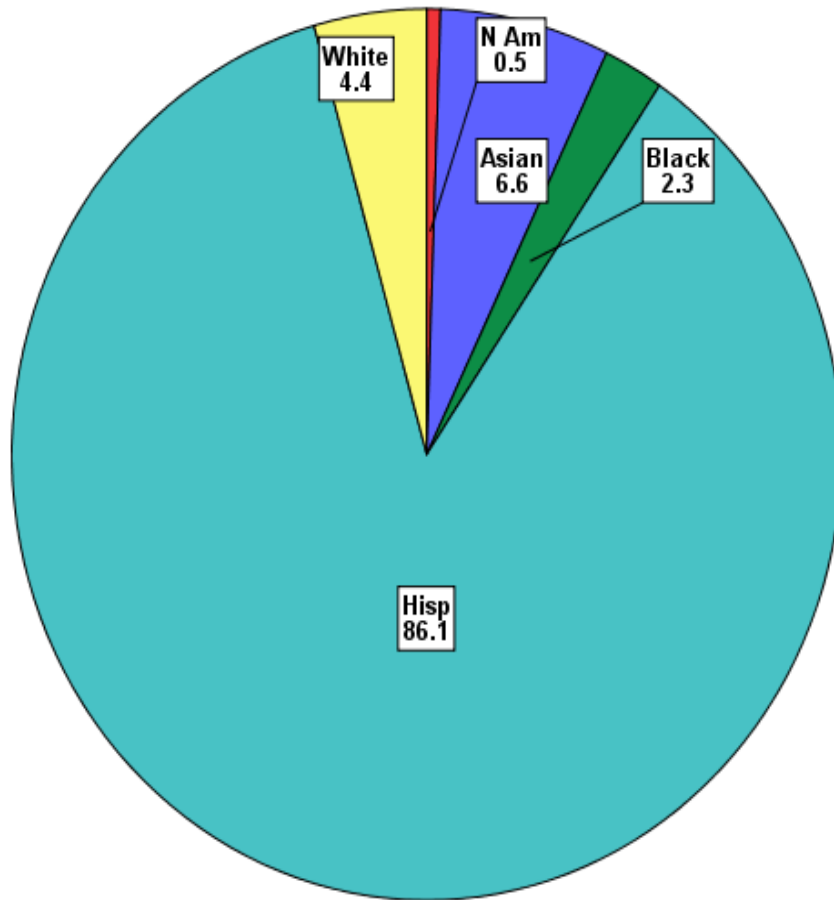
Source: CELA 2008

CDE

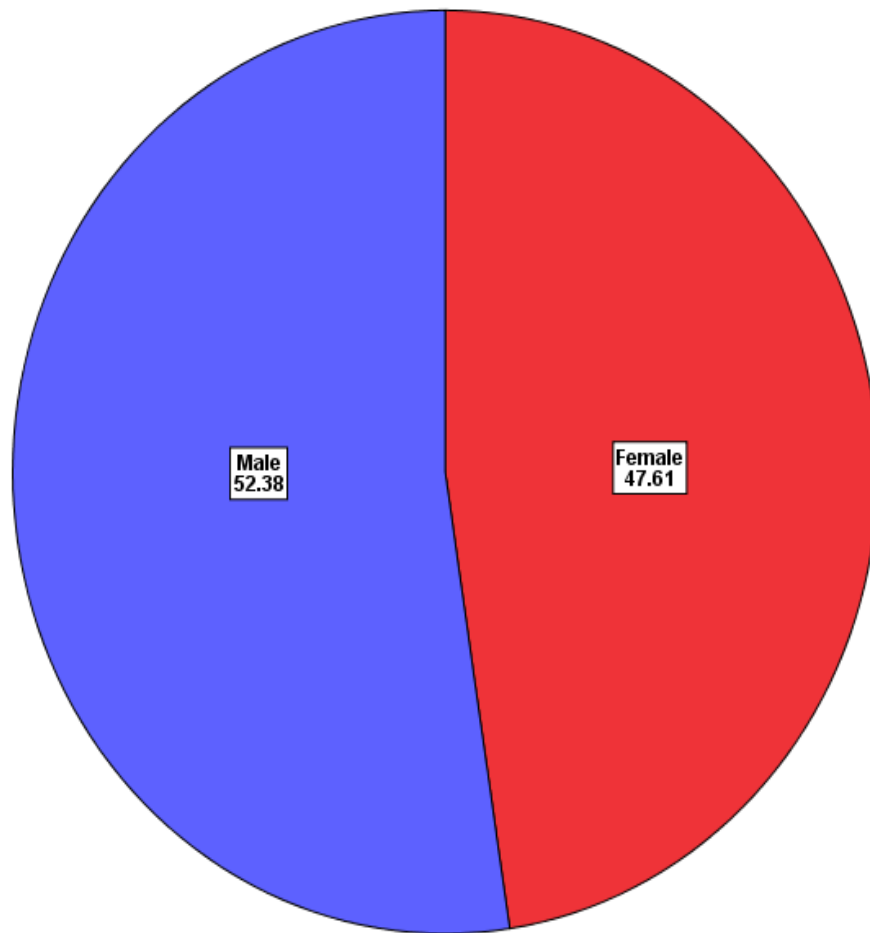
English Language Learners by Region



English Language Learners by Race/Ethnicity-2008



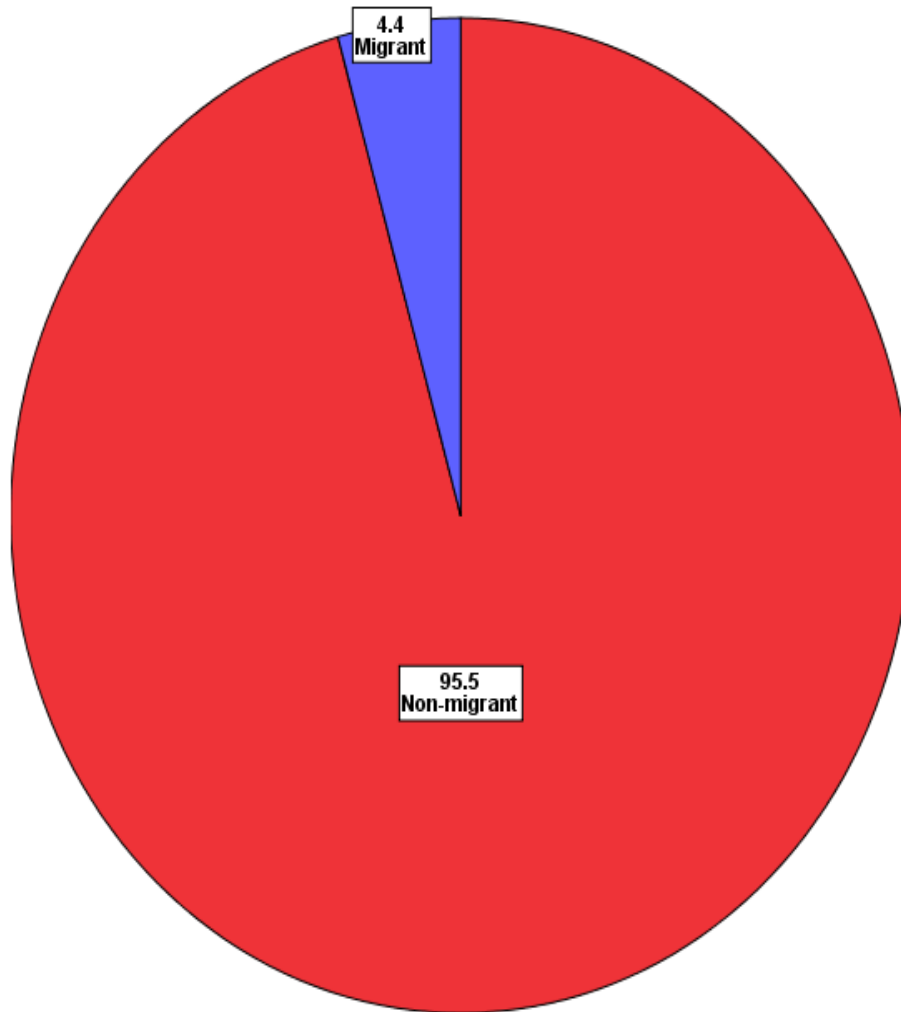
English Language Learners by Gender



Source: CELA 2008

CDE

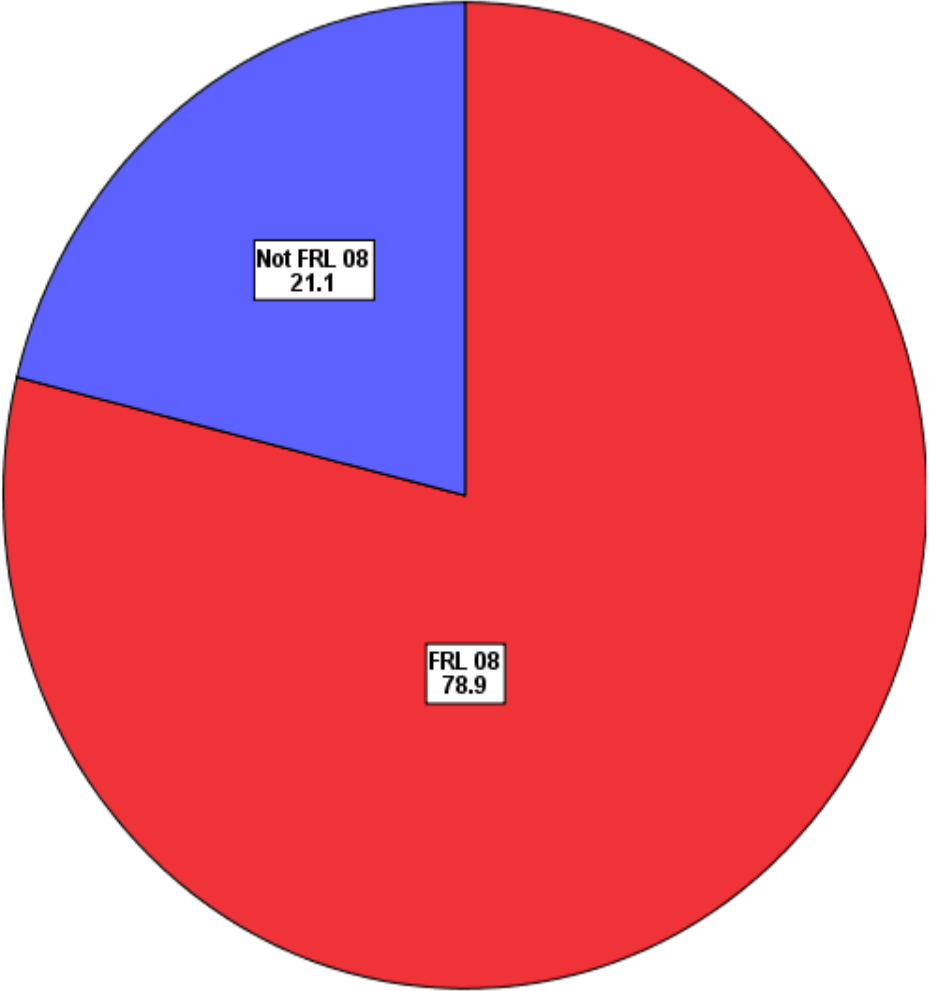
English Language Learners by Migrant Status



Source: CELA 2008

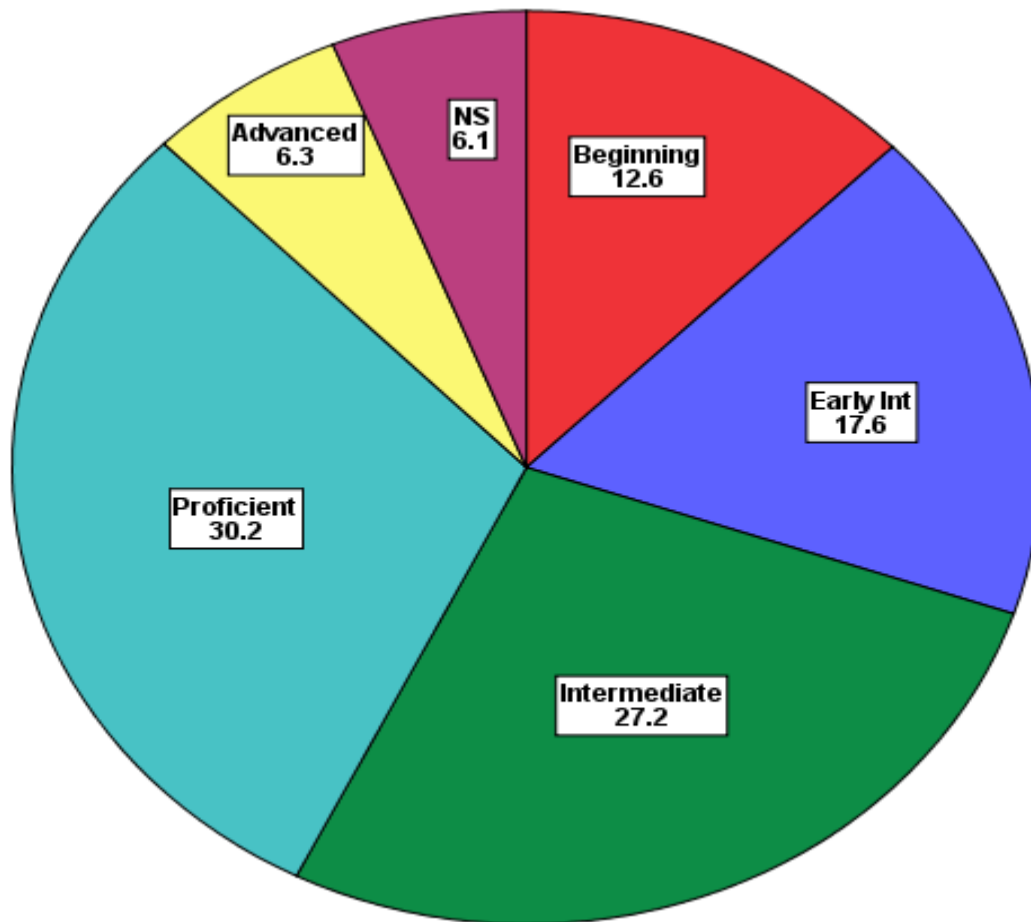
CDE

English Language Learners by Free-Reduced Price Lunch Status

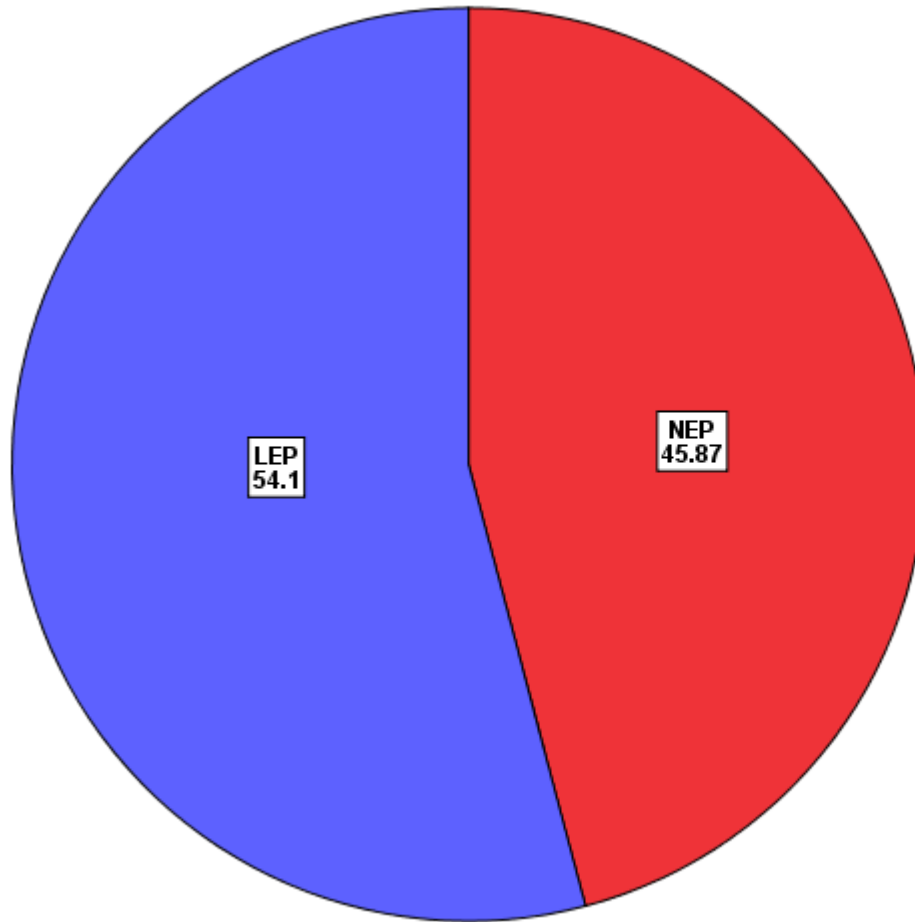


Source: CELA 2008

English Language Learners by CELA Category



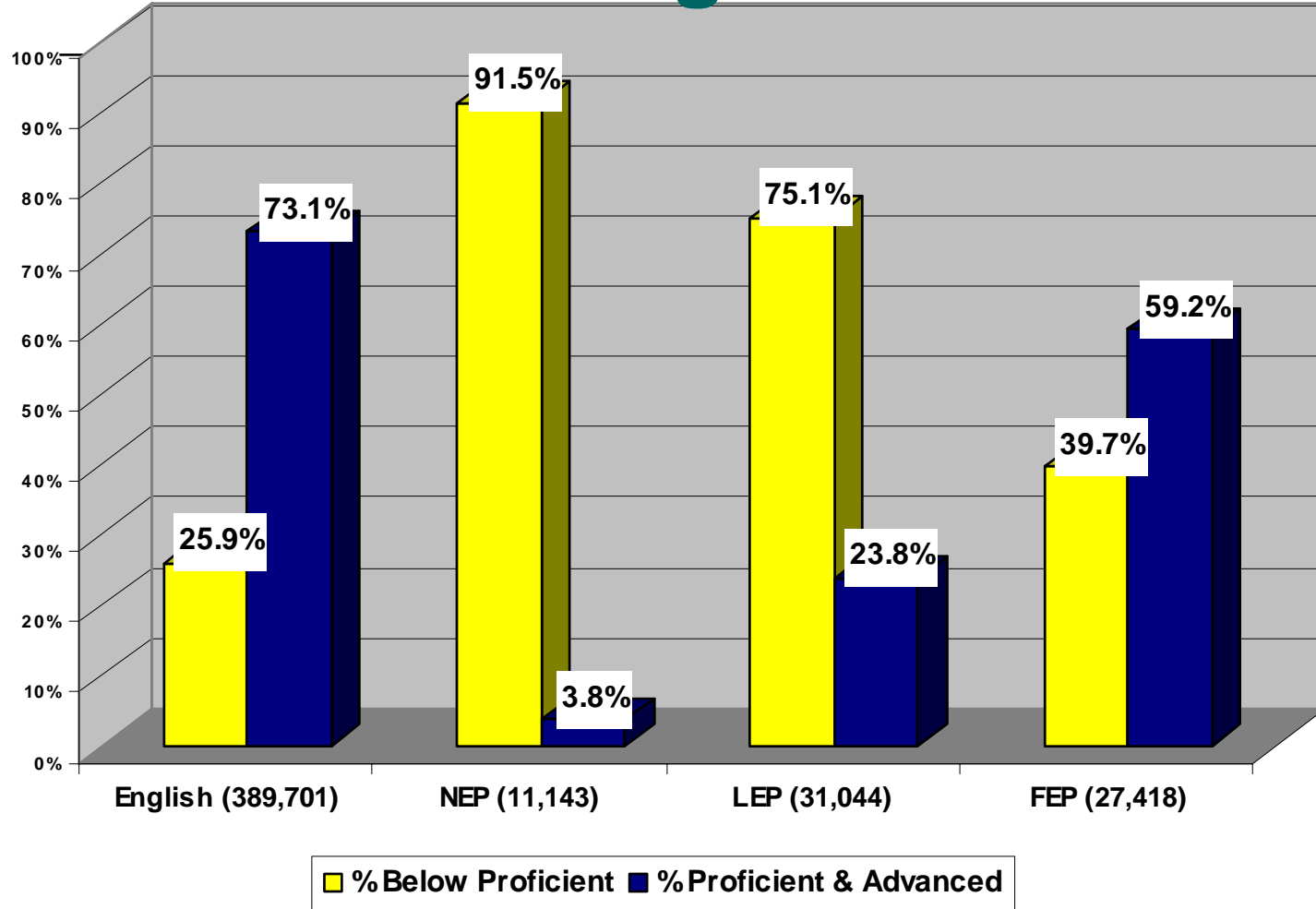
English Language Learners Language Proficiency



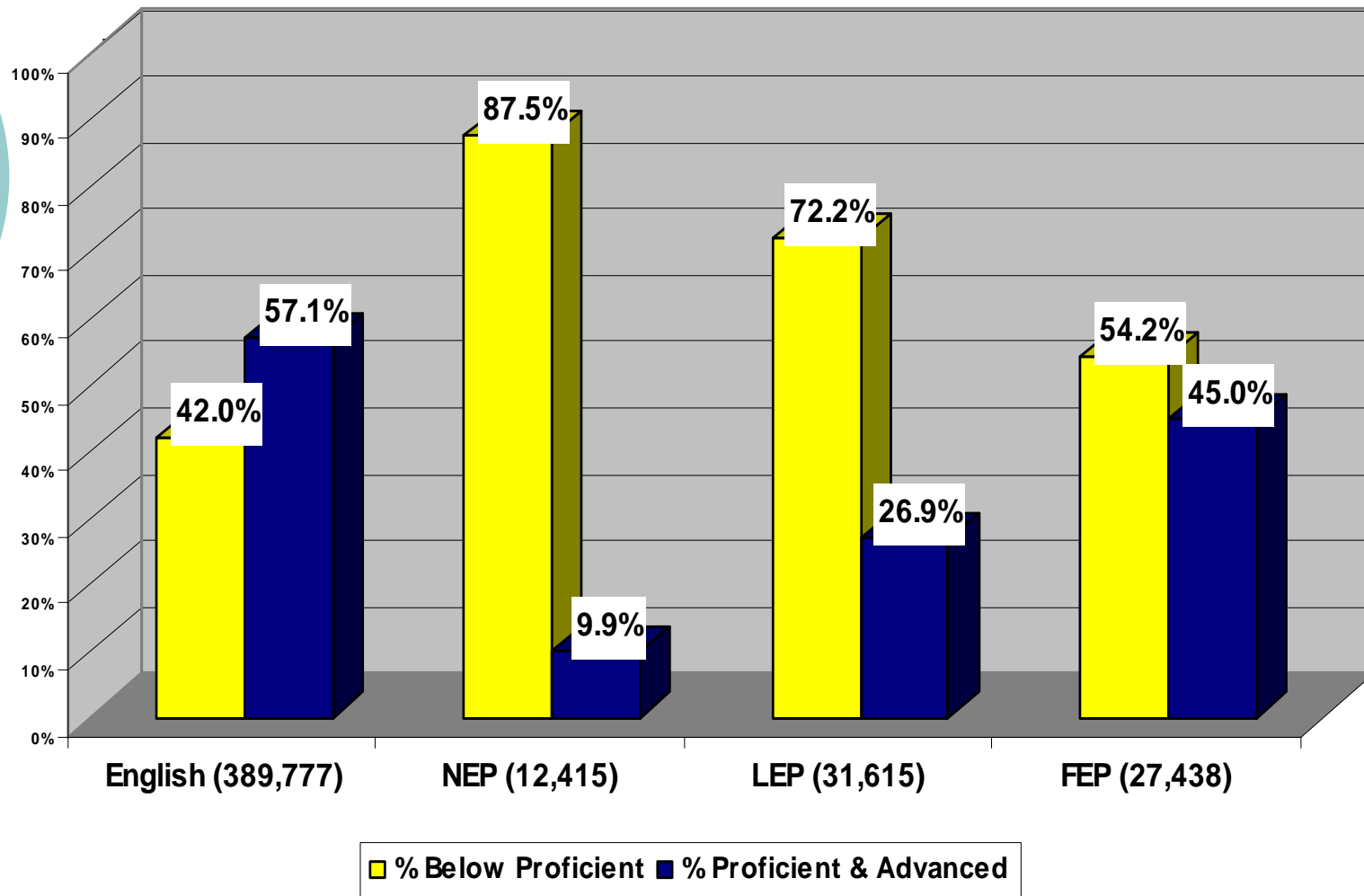
Source: CELA 2008

CDE

CSAP Reading 2007



CSAP Math 2007



Source: CSAP 2007

CDE



Student Academic Growth: A Different Dimension

- A common request from educators is “Tell me about the same students over time”!
 - Colorado’s has had a unique student identifier since 2003
- Colorado has developed a new ‘student growth’ methodology that makes it possible to examine student growth over time

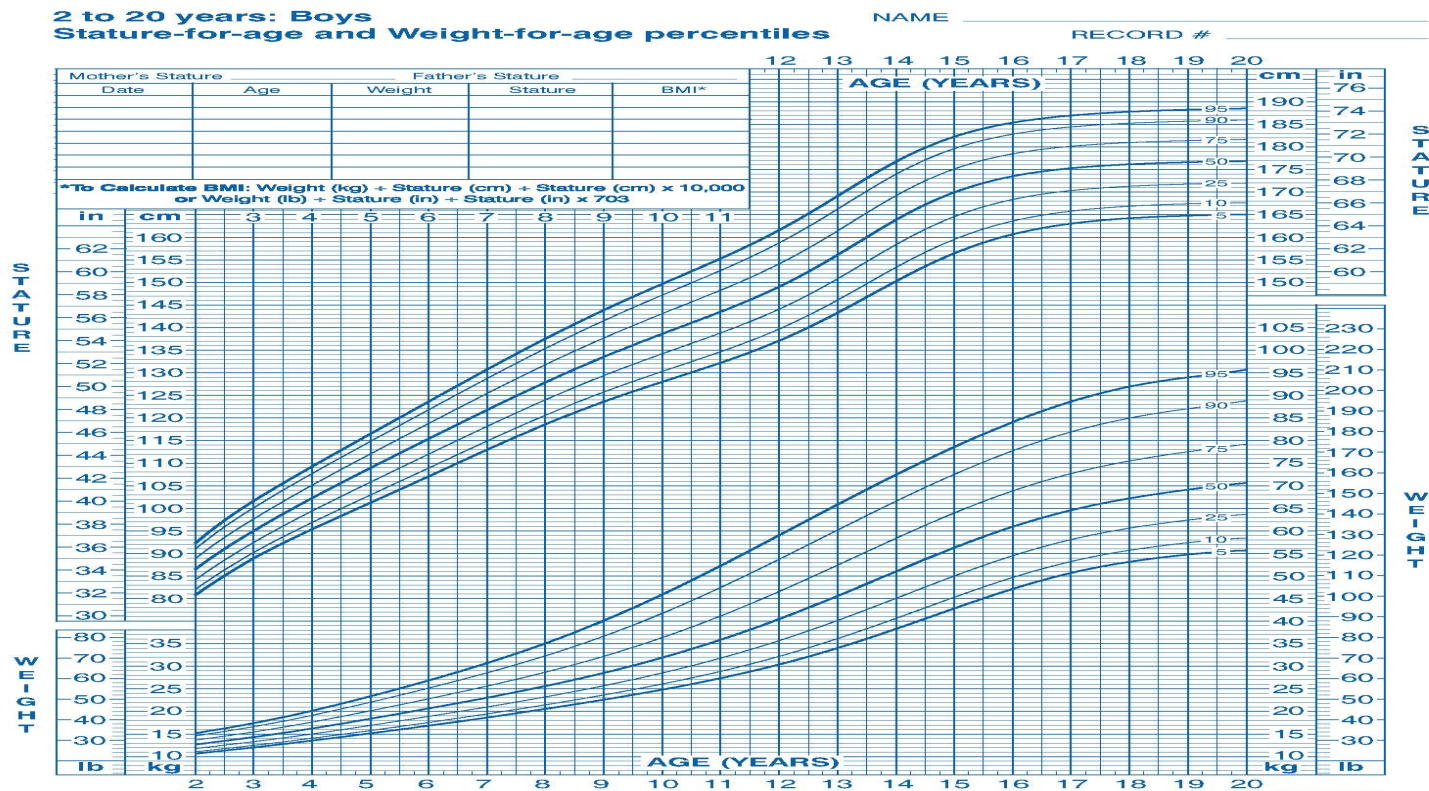


What Can Growth Tell Us

- How much growth did a student make in one year? (What is?)
- How much growth is enough to reach proficient or advanced? (What should be?)
- How much growth is the best in Colorado? (What could be?)

Colorado's Growth Model

- The idea is similar to pediatric growth charts



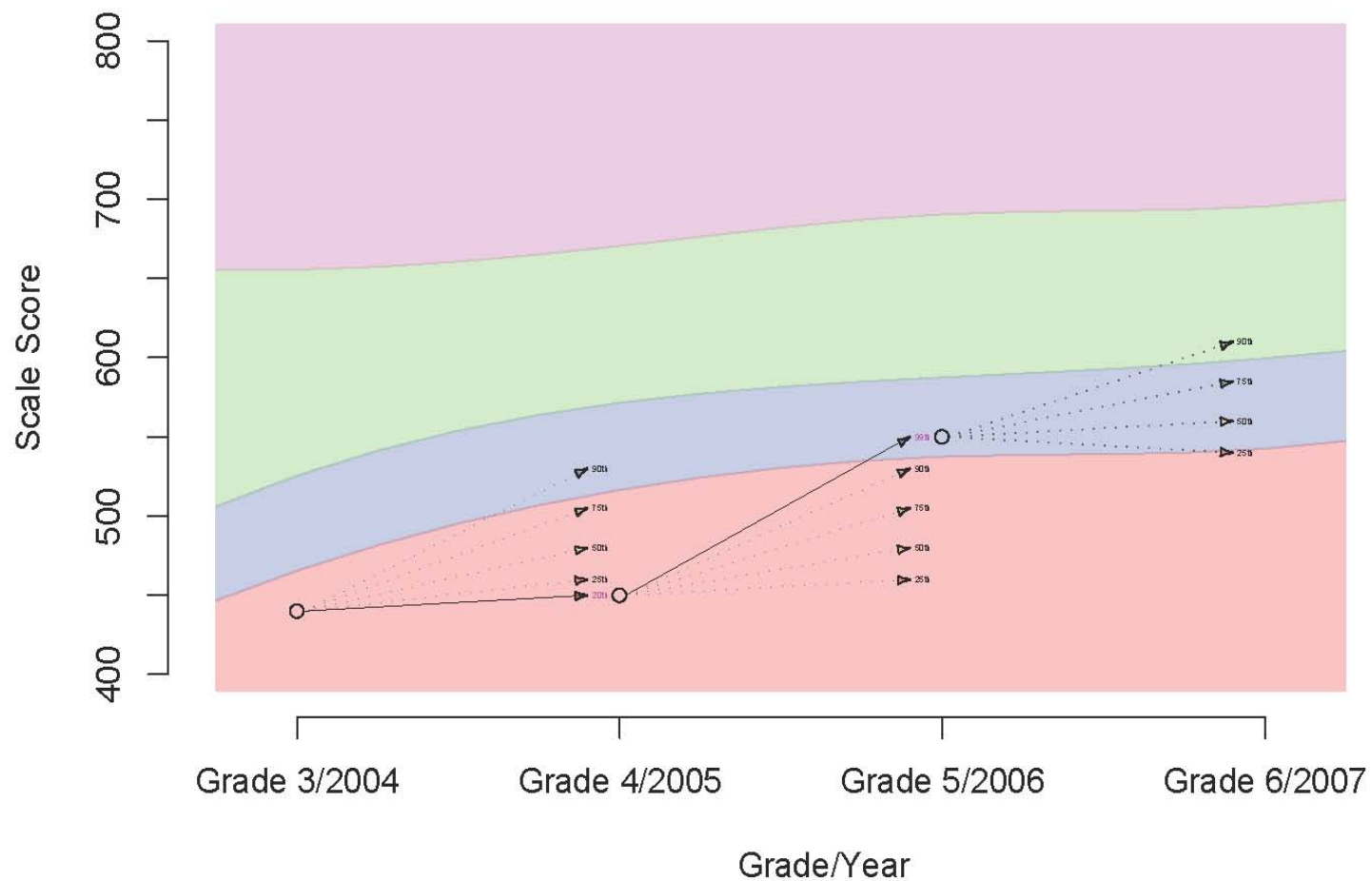
Published May 30, 2000 (modified 11/21/00).
SOURCE: Developed by the National Center for Health Statistics in collaboration with
the National Center for Chronic Disease Prevention and Health Promotion (2000).
<http://www.cdc.gov/growthcharts>



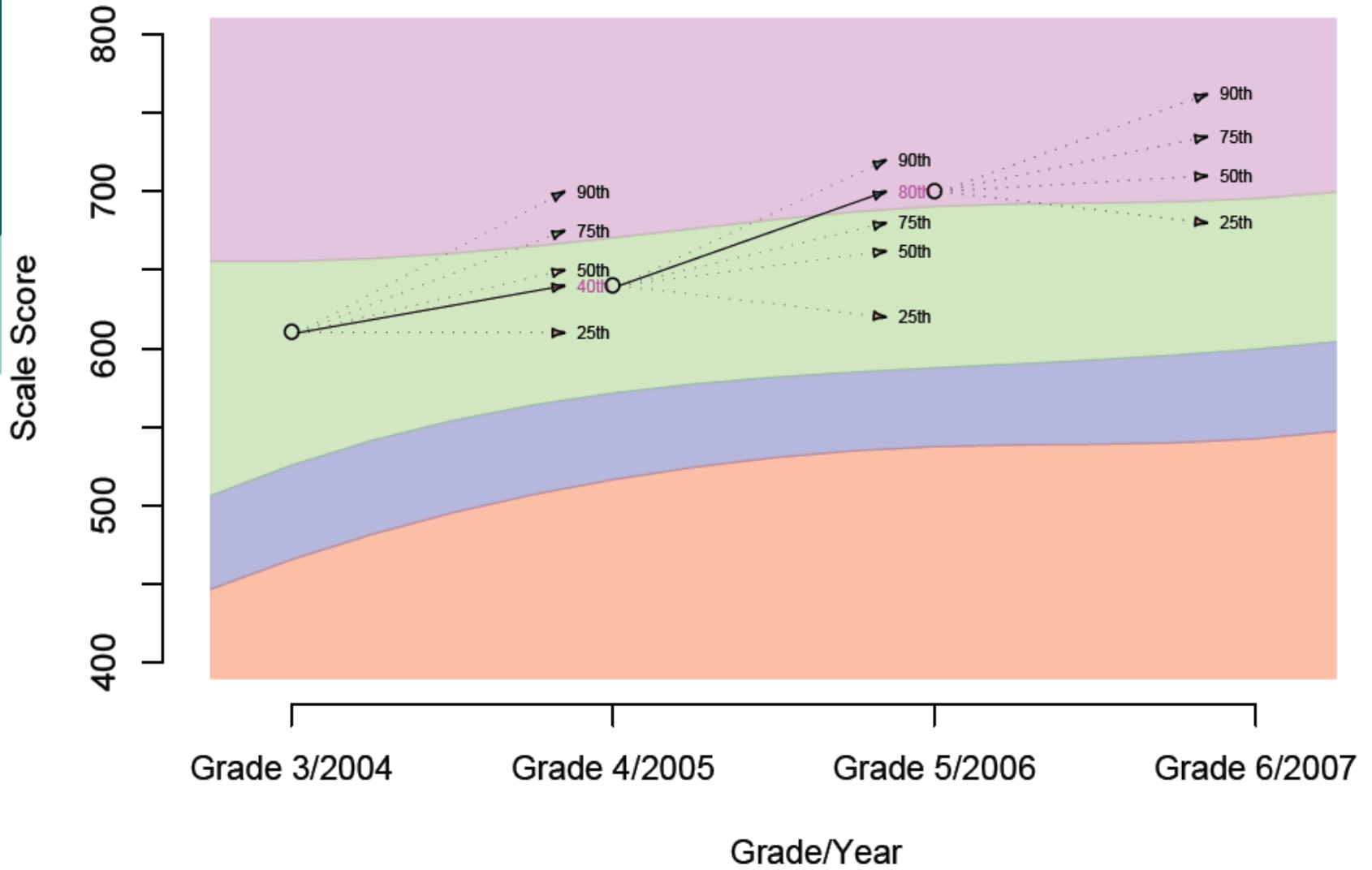
Colorado's Growth Model

- Student Growth Percentiles
 - Academic growth based on similar students
 - A student's growth percentile indicates the percentage of students, starting at the same place, that the student's growth exceeded
 - If a student has a growth percentile of 25, the student's growth exceeded the growth of 25% of students who started at a similar place.
 - If a student has a growth percentile of 75, the student's growth exceeded the growth of 75% of students who started at a similar place.
 - Typical growth is equal to 50th percentile (the median)

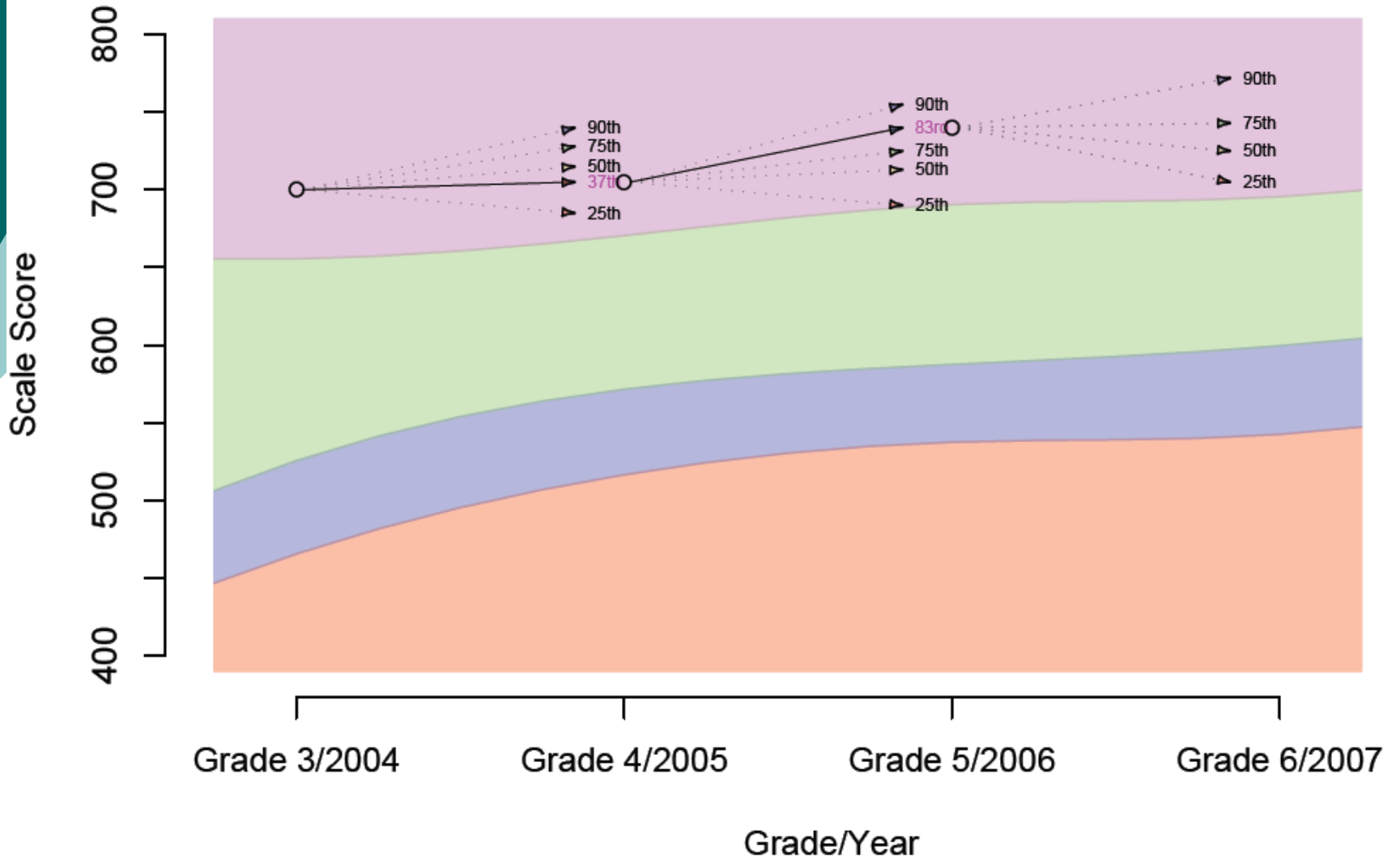
Individual Student CSAP Growth Chart: Reading 2004 to 2007



Individual Student CSAP Growth Chart: Reading 2004 to 2007



Individual Student CSAP Growth Chart: Reading 2004 to 2007





Take Home Points: Individual Student

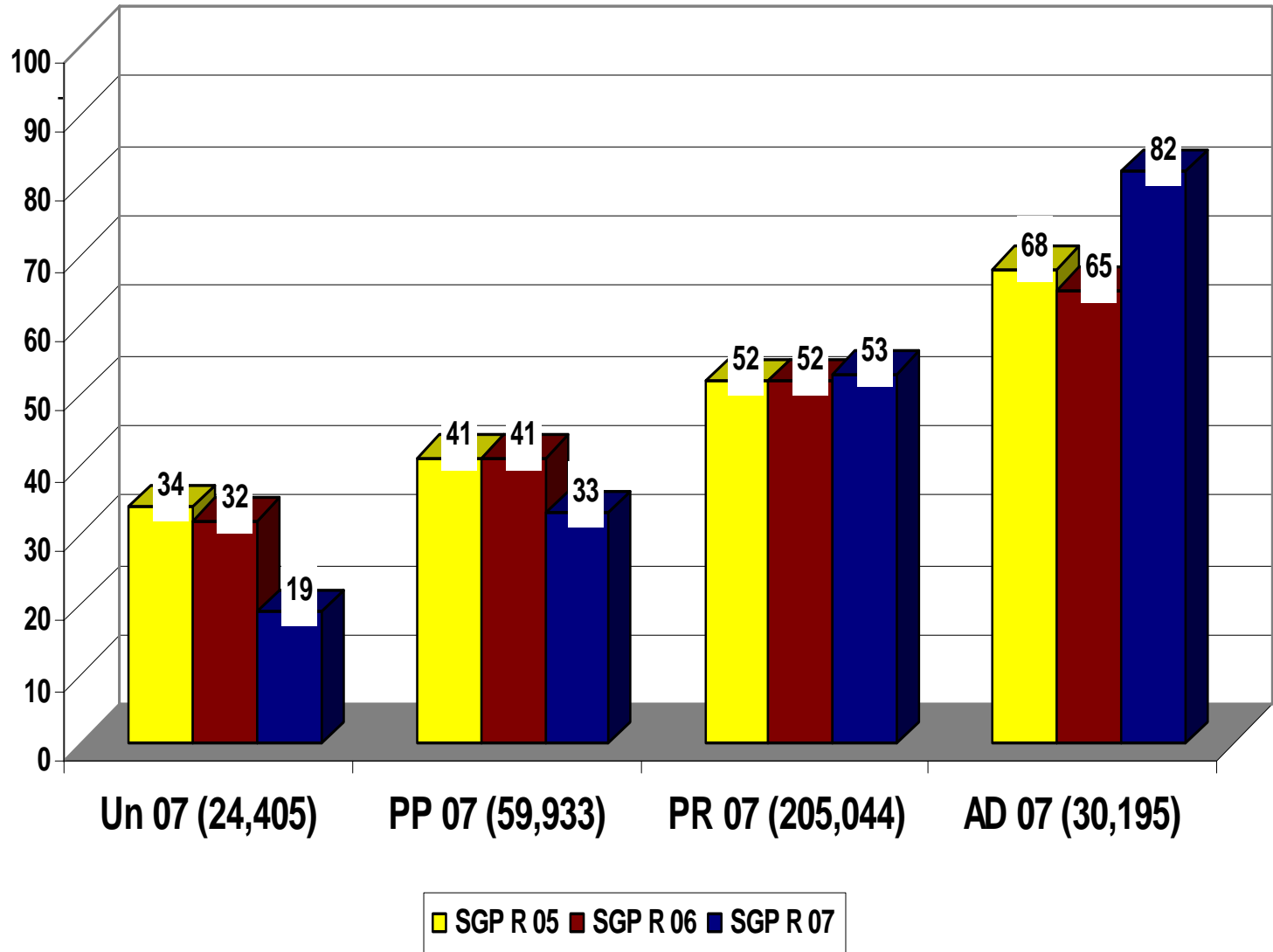
- Student growth percentiles show us how much growth a student actually made compared to academic peers
- Students at all proficiency levels can show growth
- Student growth percentiles can show how much growth is enough to move to new proficiency level



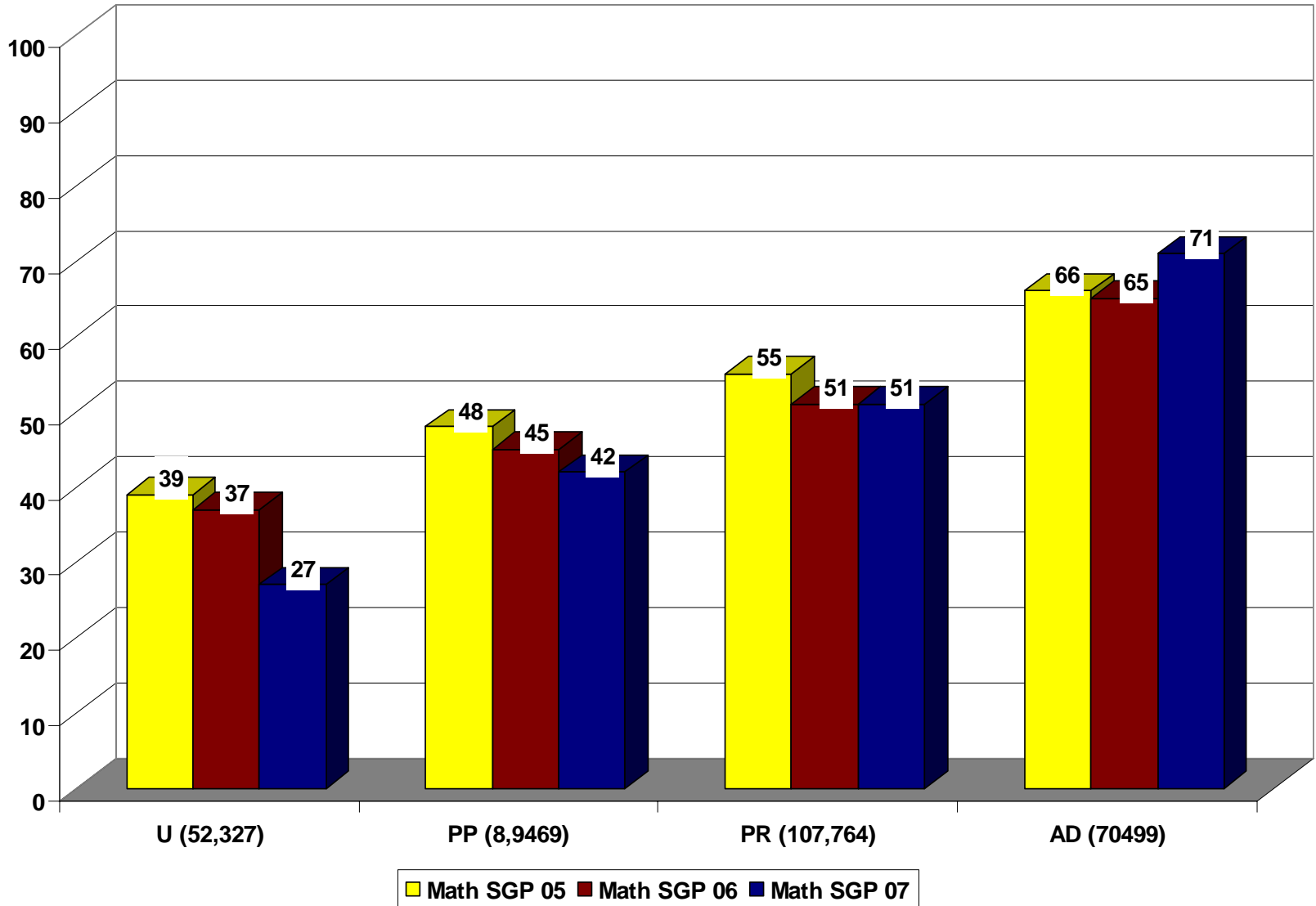
Aggregating Student Growth Percentiles

- Another nice property of student growth percentiles is that they can be 'rolled' up into larger groups such as schools or groups of students (e.g., English Language Learners)
- They can also be examined over time (e.g. 2005, 2006, 2007) for the same groups to examine trends

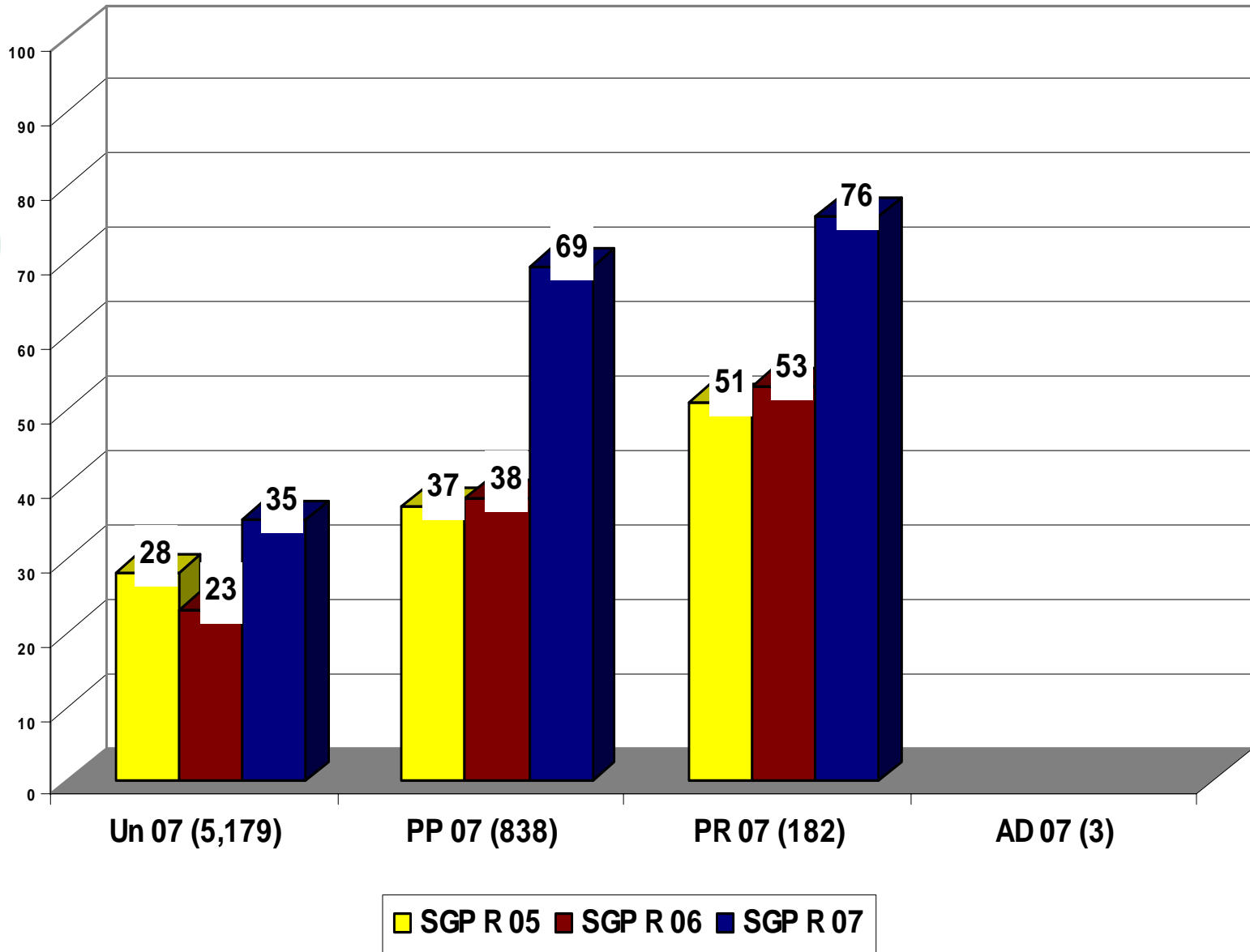
Reading Growth Percentiles – English — 2005-2007



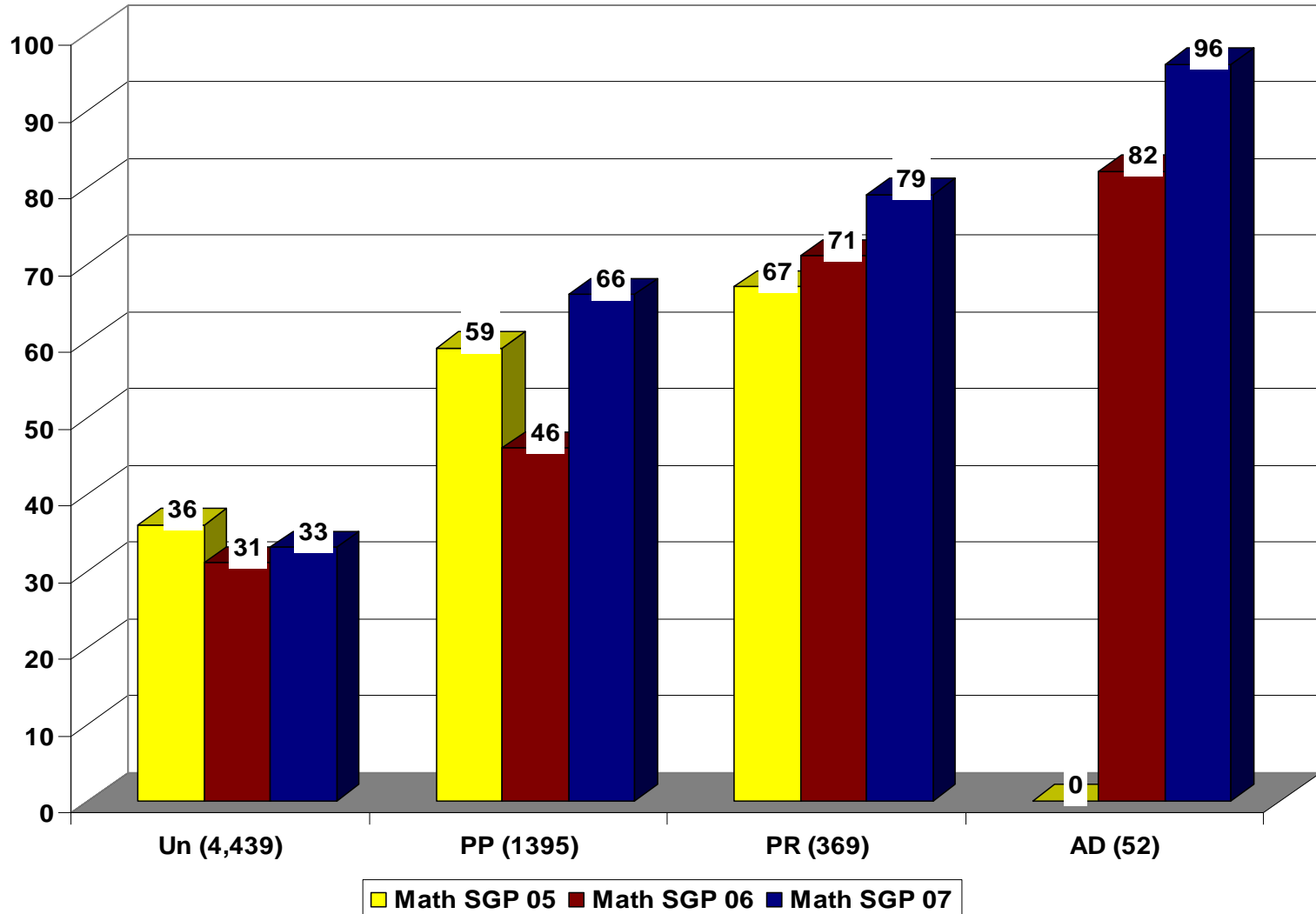
Math Growth Percentiles – English — 2005-2007



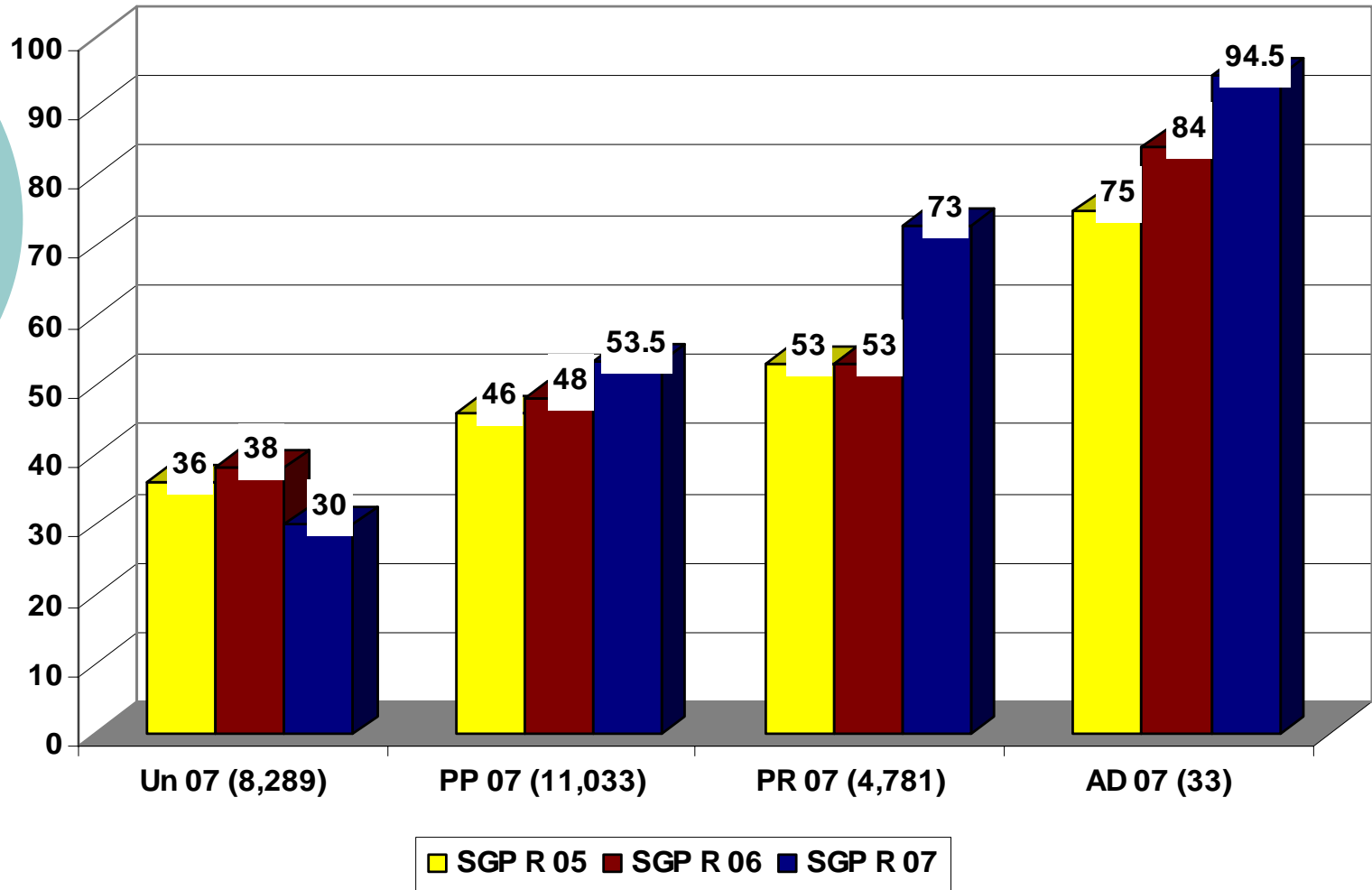
Reading Growth Percentiles – Non-English Proficient (NEP) 2005-2007



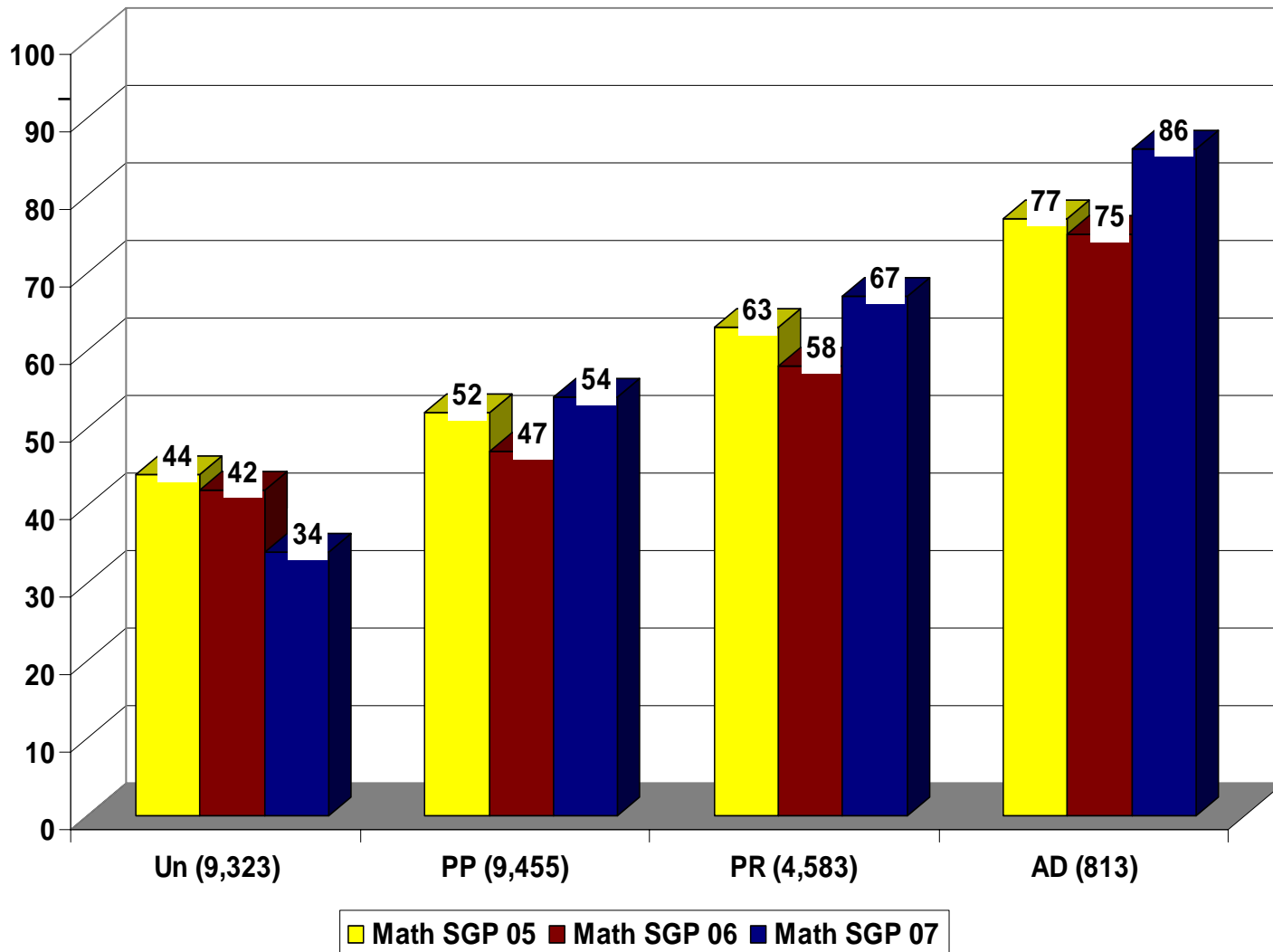
Math Growth Percentiles – Non-English Proficient (NEP) 2005-2007



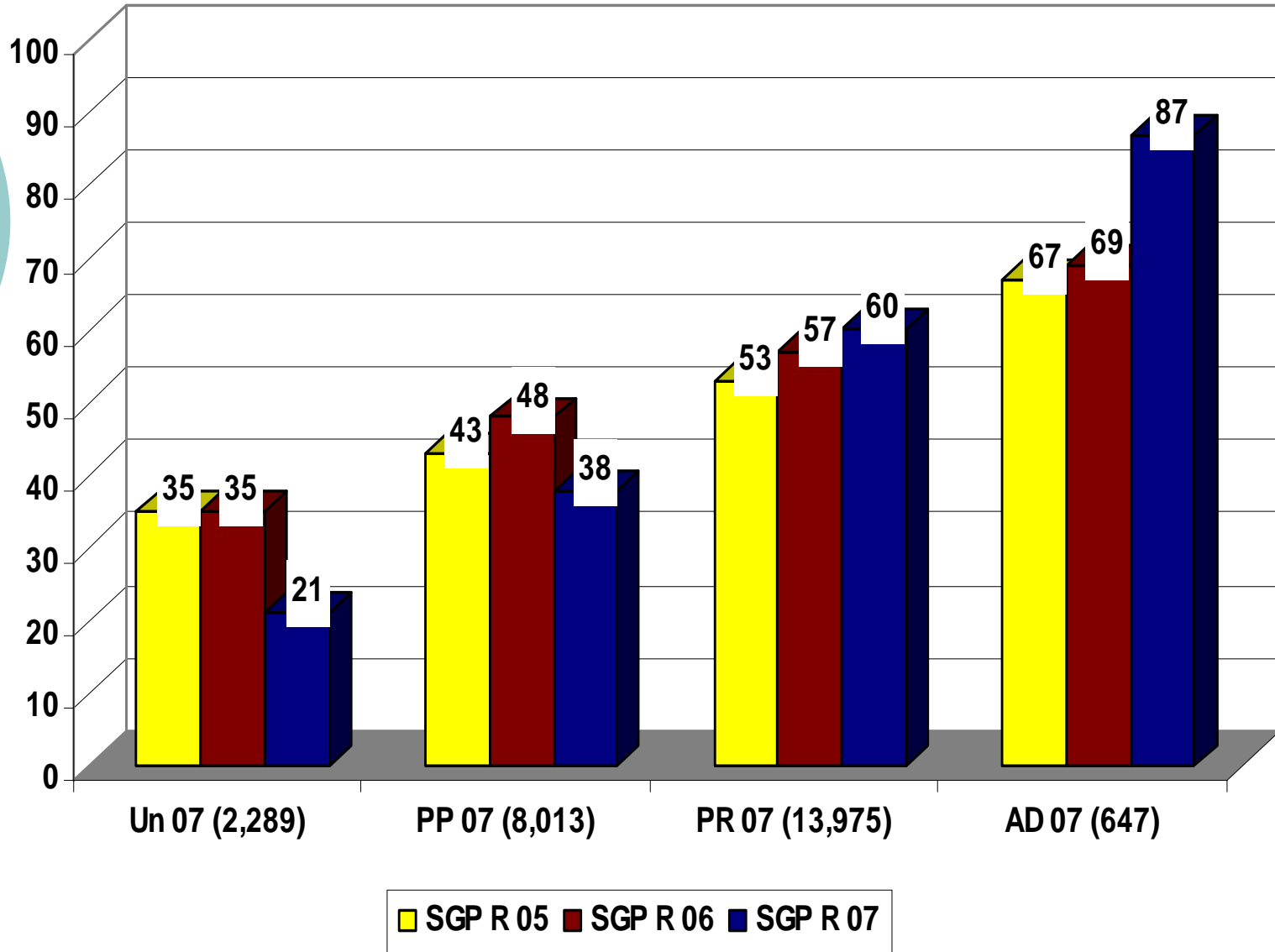
Reading Growth Percentiles – Limited English Proficient (LEP) 2005-2007



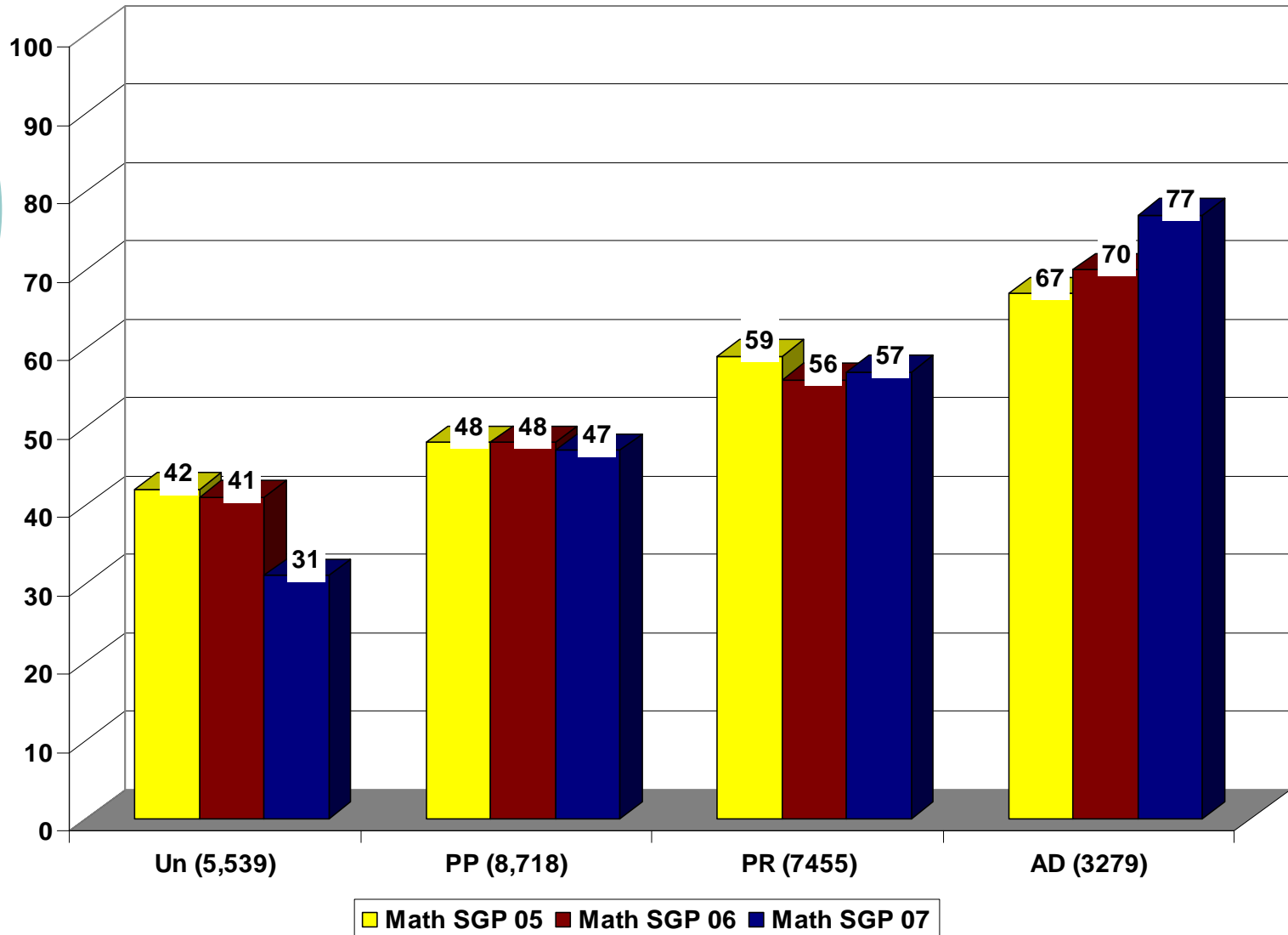
Math Growth Percentiles – Limited English Proficient (LEP) 2005-2007



Reading Growth Percentiles – Fluent English Proficient (FEP) 2005-2007



Math Growth Percentiles – Fluent English Proficient (FEP) 2005-2007





Take Home Points: Student Groups

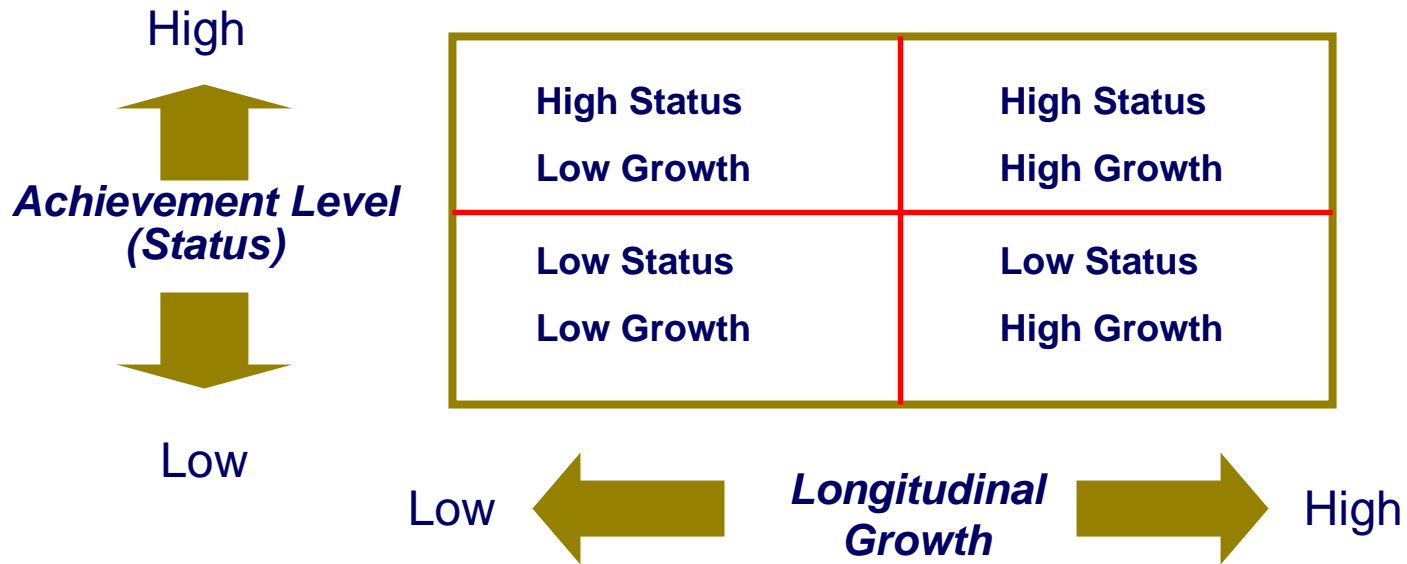
- Median student growth percentiles can show us how much growth a group of students made over time.
- Groups of students at all proficiency levels can show growth.
- English language learners can and do show growth over time.



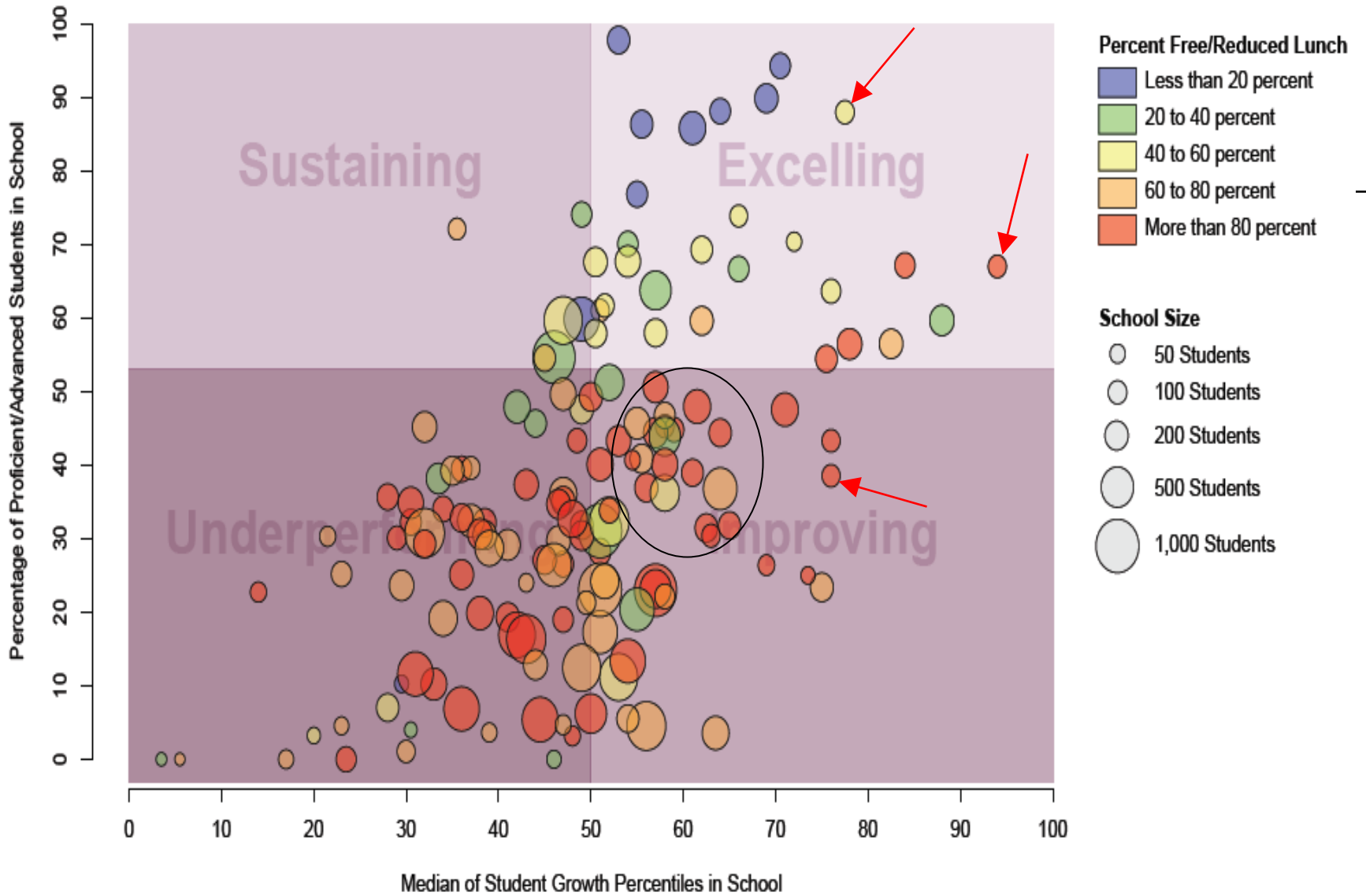
More Aggregating Student Growth Percentiles

- Median student growth percentiles can be aggregated to the school level
- Median student growth percentiles can provide insight into the performance of schools and sub-groups of students within schools

Understanding School Performance

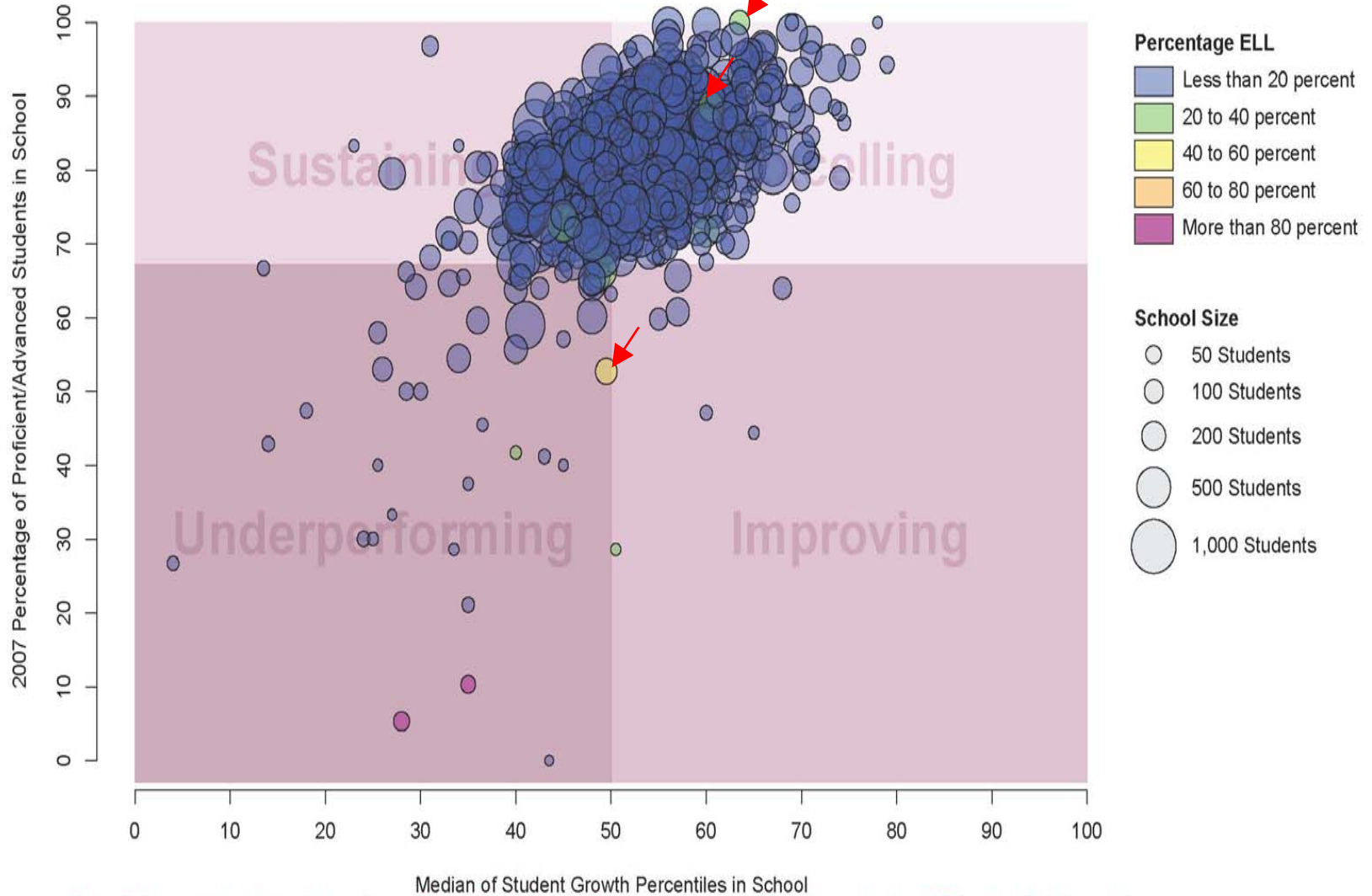


Student Growth versus Student Achievement by Free/Reduced Lunch Percentage



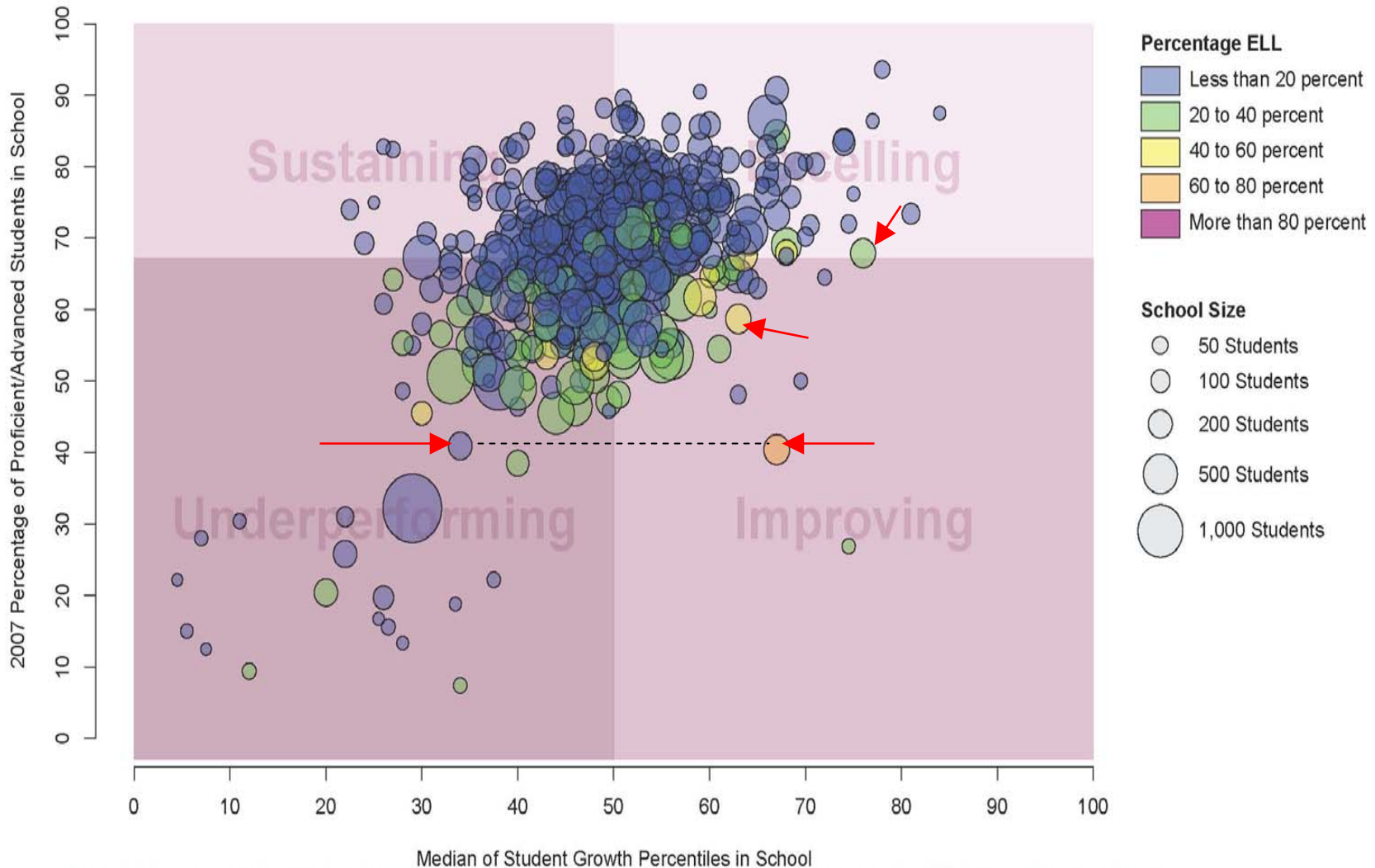
Note: Achievement and growth levels used to qualify school performance are presently under review by CDE and subject to revision.

2007 CSAP School Reading Results
Student Growth versus Student Achievement by Percentage English Language Learner
Percentage Free/Reduced Lunch < 25%



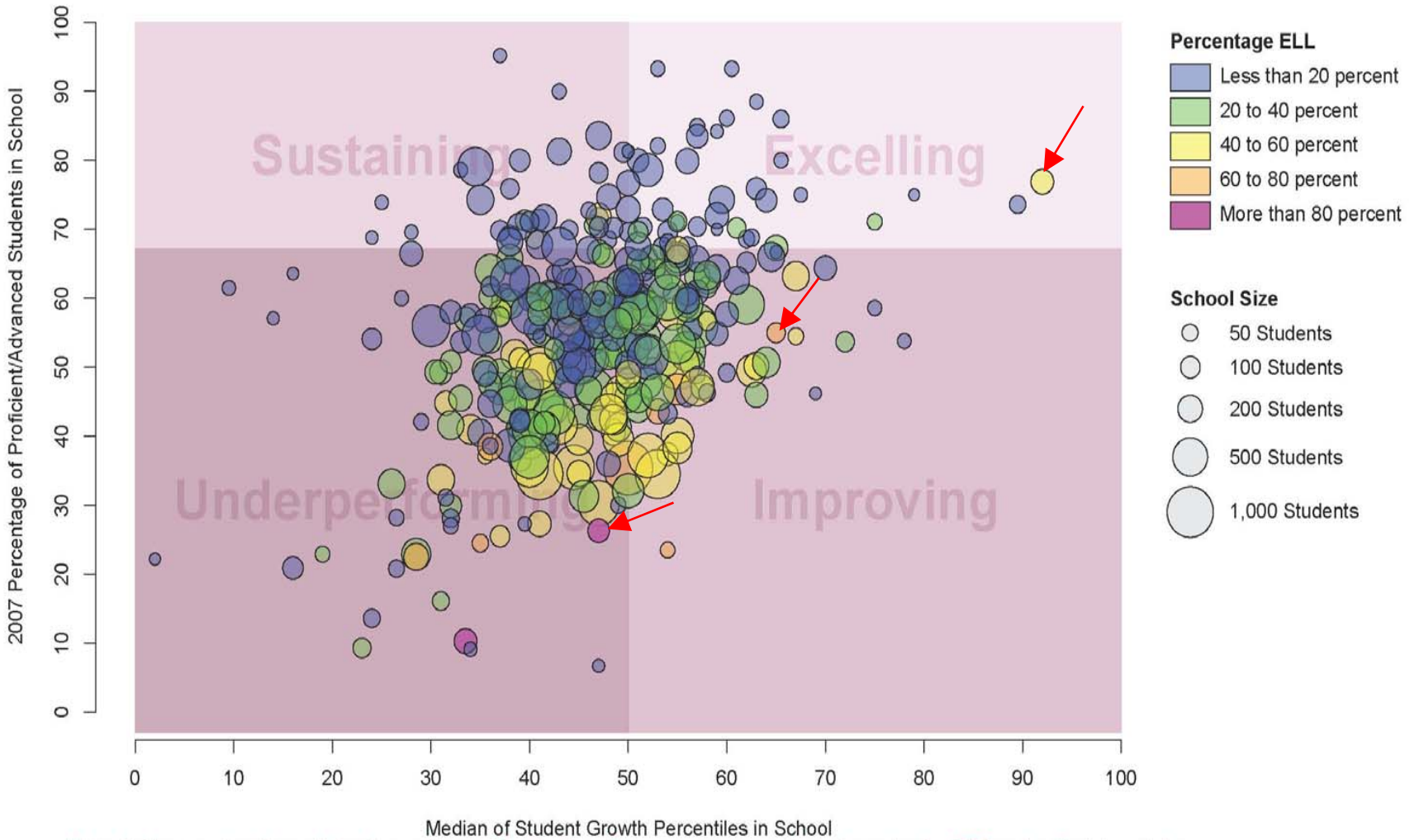
Note: Achievement and growth levels used to qualify school performance are presently under review by CDE and subject to revision.

2007 CSAP School Reading Results
Student Growth versus Student Achievement by Percentage English Language Learner
Percentage Free/Reduced Lunch 25%–50%



Note: Achievement and growth levels used to qualify school performance are presently under review by CDE and subject to revision.

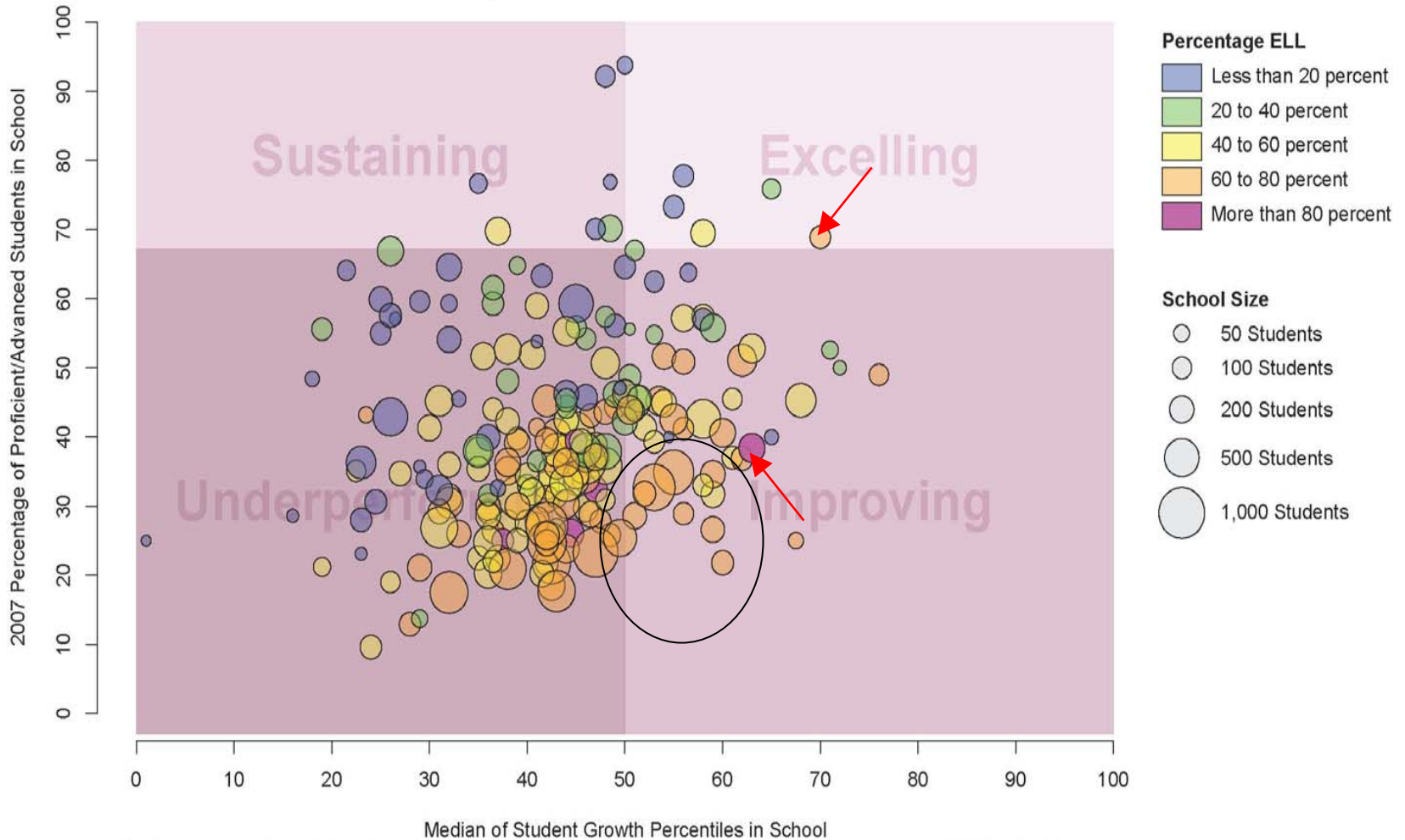
2007 CSAP School Reading Results
Student Growth versus Student Achievement by Percentage English Language Learner
Percentage Free/Reduced Lunch 50-75%



Note: Achievement and growth levels used to qualify school performance are presently under review by CDE and subject to revision.

2007 CSAP School Reading Results

Student Growth versus Student Achievement by Percentage English Language Learner Percentage Free/Reduced Lunch > 75%



Note: Achievement and growth levels used to qualify school performance are presently under review by CDE and subject to revision.



Take Home Points: Schools

- Both status and growth can be displayed at the same time.
- Growth occurs regardless of level of poverty.
- English language learners grow in schools of all levels of poverty.
- Growth by school can be followed over time.



Comments? Reaction?
