

2013 School Plan Type Assignments

**State Board of Education Meeting
December 11th, 2013**

**Keith Owen, Ph.D.
Alyssa Pearson**

Background

- **The Education Accountability Act of 2009 (SB-163, section 22-11-208 and 22-11-210 C.R.S.) requires an annual review of district and school performance.**
- **All districts annually receive a District Performance Framework (DPF) report. This determines their accreditation rating.**
- **All schools annually receive a School Performance Framework (SPF) report. This determines their school plan types.**
- **For schools, the Department makes a recommendation to the State Board. The State Board makes the final determination.**

Purposes

- For all districts and schools, provide a statewide comparison that highlights performance strengths and areas for improvement.
- Identify those districts and schools that are the lowest-performing in relation to state goals and direct state support and intervention appropriately.
- Identify those districts and schools that are the highest-performing and learn from their practices and reward them.

School Plan Types

- **Plan types for schools:**
 - Performance Plan
 - Improvement Plan
 - Priority Improvement Plan
 - Turnaround Plan

Requests to Reconsider

- **27 school and 13 district intents submitted on September 15th.**
- **Technical assistance provided by CDE through webinars and one-on-one office hours.**
- **15 schools submitted drafts for pre-review.**
- **Official requests submitted on Oct. 15 for the Commissioner's consideration.**
- **CDE reviewed the requests to reconsider and weighed the additional evidence.**
- **Recommendations shared with the board, for approval.**

School Request to Reconsider Recommendations

- **13 schools recommended for approved**
 - Additional data to supplement CDE's limited data due to small N size
 - Small, new and combined school issues
 - Participation rate challenges
- **9 school requests recommended for denial**
 - Additional data submitted did not support a higher rating
- **2 school requests rescinded by districts after October 15**
- **Districts lowered ratings for 34 schools**
 - District's performance framework
 - Fiscal assurances
 - Assessment administration breaches

2010, 2011, 2012 and 2013 School Results

- The percentage of schools assigned Performance and Turnaround Plans increased slightly, while those with Priority Improvement and Improvement Plans decreased.

School Plan Type Assignment	2010		2011		2012		2013	
	#	%	#	%	#	%	#	%
Performance Plan	1092	67.2%	1144	69.5%	1200	70.7%	1211	70.9%
Improvement Plan	337	20.7%	301	18.3%	332	19.6%	329	19.3%
Priority Improvement Plan	130	8.0%	147	8.9%	126	7.4%	119	7.0%
Turnaround Plan	67	4.1%	55	3.3%	40	2.4%	49	2.9%
Total	1626		1647		1698		1708	

On-Line School Outcomes

Plan Type	Non-Online School		On-line School	
	#	%	#	%
Performance	1204	70.9%	7	21.2%
Improvement	321	18.9%	8	24.2%
Priority Improvement	108	6.4	11	33.3%
Turnaround	44	2.6%	5	15.2%
Closed	22	1.3%	2	6.1%
Total	1699		33	

Charter School Outcomes

Plan Type	Non-Charter School		Charter School	
	#	%	#	%
Performance	1071	69.2	140	75.7
Improvement	305	19.7	24	13.0
Priority Improvement	108	7.0	11	6.0
Turnaround	44	2.8	5	2.7
Closed	19	1.2	5	2.7
Total	1547		185	

Innovation School Outcomes

Plan Type	Non-Innovation School		Innovation School	
	#	%	#	%
Performance	1183	70.1	28	63.6
Improvement	321	19.0	8	18.2
Priority Improvement	117	6.9	2	4.5
Turnaround	45	2.7	4	9.1
Closed	22	1.3	2	4.5
Total	1688		44	

2012 to 2013 School Plan Type Changes

Change in School Plan Type Assignment from 2011 to 2012		
	# of schools	% of schools
Moved down 3 levels	5	0.3%
Moved down 2 levels	25	1.5%
Moved down 1 level	168	10.0%
Stayed the same	1309	78.1%
Moved up 1 level	143	8.5%
Moved up 2 levels	21	1.3%
Moved up 3 levels	5	.3%
Total	1676	

2011, 2012 and 2013 Alternative Education Campus (AEC) Results

- **2013 AEC Results show an increase in the percent of schools with AEC: Performance and AEC: Improvement Plans, a decrease with AEC: Priority Improvement Plans and AEC: Turnaround Plans.**

School Plan Types	2011		2012		2013	
	# of schools	% of schools	# of schools	% of schools	# of schools	% of schools
AEC: Performance Plan	25	33.3%	28	36.8%	30	38.5%
AEC: Improvement Plan	19	25.3%	23	30.3%	26	33.3%
AEC: Priority Improvement Plan	17	22.7%	14	18.4%	12	15.4%
AEC: Turnaround Plan	11	14.7%	11	14.5%	10	12.8%
Total	72		76		78	

Implications

- **All schools and districts are required to submit an improvement plan annually.**
- **CDE reviews all Priority Improvement and Turnaround Plans**
- **The plan includes:**
 - Trends, Root Causes, Targets, Improvement Strategies, Resources, Interim Measures & Implementation Benchmarks
- **Accountability Clock**

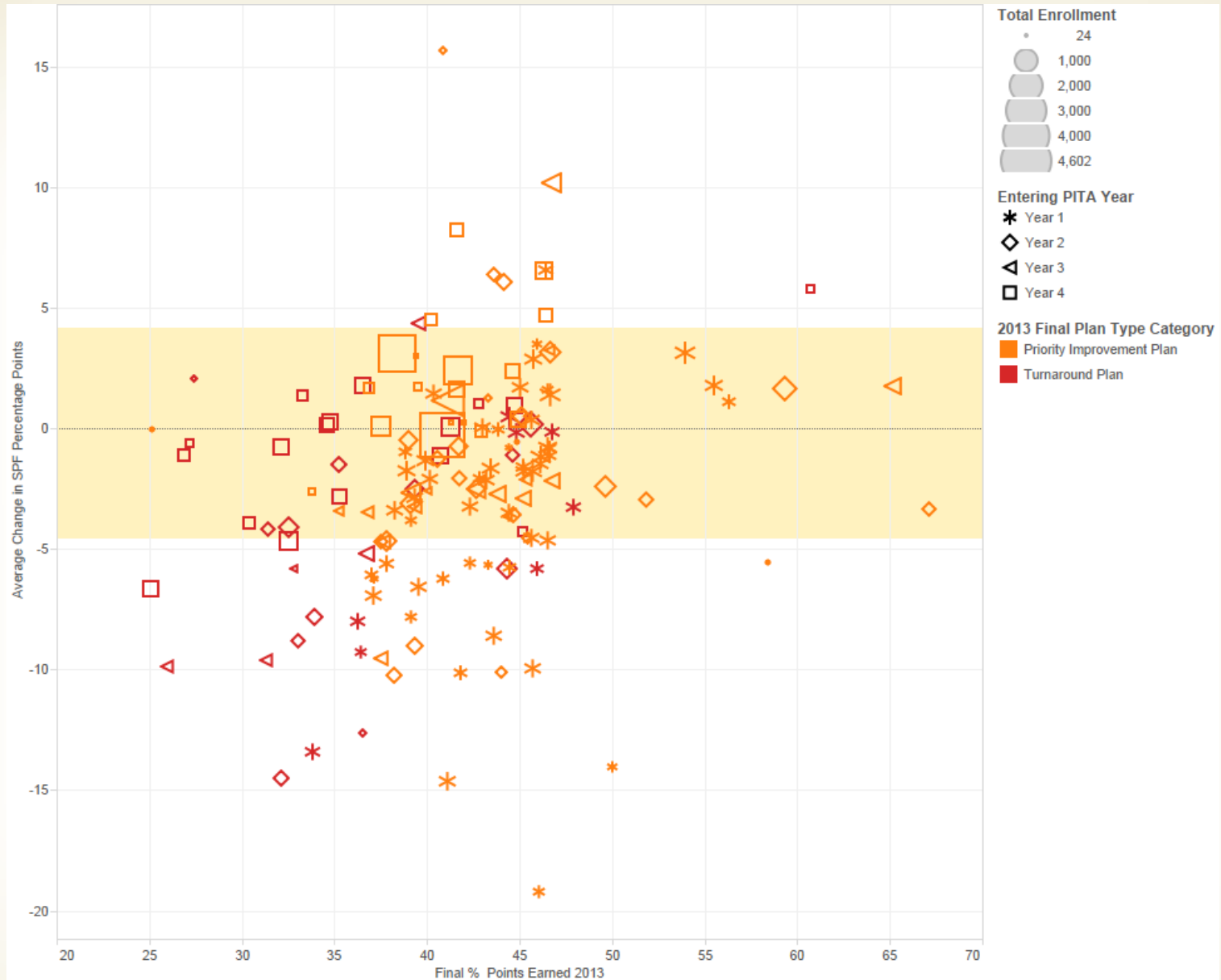
Priority Improvement/Turnaround Schools

Priority Improvement and Turnaround schools ranges from entering Year 1 to entering Year 4 on July 1, 2014.

Number of Years on Priority Improvement or Turnaround*	Number of Schools		
	Priority Improvement	Turnaround	Total
Year 1	63	18	81
Year 2	25	13	38
Year 3	23	8	31
Year 4	20	20	40

*Beginning July 1, 2014

Average annual change in points in relation to current performance



Source: CDE Student October, 2013; CDE School Accreditation Ratings, 2013

Calculation Note: The average change in SPF percentage points earned was calculated by taking the difference between two years (e.g., (SPF % Points SY 2011) – (SPF % Points SY 2010)). The change was calculated between 2013, 2012, 2011, and 2010. The differences between those four years were then averaged. Graph excludes schools with less than 16 students eligible for free or reduced lunch and/or a valid average change in SPF percentage points. The following schools are excluded from the above chart: schools indicated as closed for the SY2012-13 and AEC schools.

Performance Trends of Priority Improvement Schools

Entering Year 3



Of the 23 Priority Improvement schools entering year 3:

- 1 school **increased**
- 18 schools stay **flat**
- 2 schools **declined**
- 2 schools **insufficient trend data**

Entering Year 4



Of the 20 Priority Improvement schools entering year 4:

- 4 schools **increased**
- 15 schools stay **flat**
- 1 school **insufficient trend data**

Performance Trends of Turnaround Schools

Entering Year 3



Entering Year 4



Of the 8 Turnaround schools entering year 3:

- 1 school stays **flat**
- 5 schools **declined**
- 2 schools **insufficient trend data**



Of the 20 Turnaround schools entering year 4:

- 1 school **increased**
- 16 schools stay **flat**
- 3 schools **declined**

Public Data Access

■ SchoolView: <http://www.schoolview.org/>

- District and School Performance Frameworks will be available on the Performance page

Performance Framework Reports and Improvement Plans

The district and school performance frameworks provide a snapshot of the district or school's level of attainment on academic achievement, growth, growth gaps and postsecondary readiness.

Please Note: The state Performance Framework reports listed below are available for the three latest years of framework results. The 2012 reports are highlighted in green, and are the latest results released in December 2012.

Improvement plans provide information on the district or school's data trends, root causes and targets, and identify strategies and resources the district or school will use to improve student academic outcomes. Plans are submitted to the Department for publication each year on April 15. As planning is an ongoing process, these documents reflect a "point in time" plan submission."

Click on a district or school name to view its performance framework reports and improvement plans:

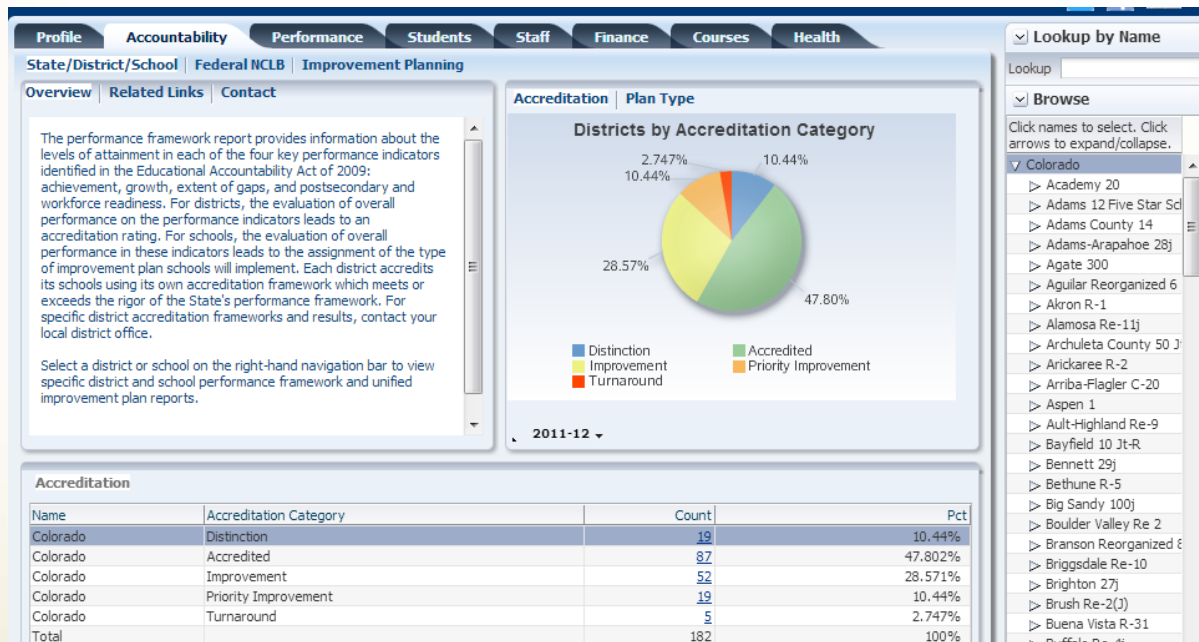
The screenshot displays the SchoolView interface with three main sections: District, School, and Reports. The District list includes 15 entries, with '1040 - Academy 20' selected. The School list includes 10 entries, with '0017 - Academy Endeavour Elementary School' selected. The Reports list shows '1040 - Academy 20' with a 'District Report' section containing 'Improvement Plan', '2012 - 1 Year DPF Report', and '2012 - 3 Year DPF Report', all highlighted in green. Below this is a 'School Report' section with the text 'No School Selected'.

District:	School:	Reports:
1040 - Academy 20	0017 - Academy Endeavour Elementary School	1040 - Academy 20
0020 - Adams 12 Five Star Schools	0019 - Academy International Elementary School	District Report
0030 - Adams County 14	0110 - Academy Online High School	Improvement Plan
0180 - Adams-Arapahoe 28J	0076 - Air Academy High School	2012 - 1 Year DPF Report
0960 - Agate 300	0249 - Antelope Trails Elementary School	2012 - 3 Year DPF Report
1620 - Aguilar Reorganized 6	0209 - Aspen Valley High School	2011 - 1 Year DPF Report
3030 - Akron R-1	0074 - Challenger Middle School	2011 - 3 Year DPF Report
0100 - Alamosa RE-11J	1615 - Chinook Trail Elementary School	2010 - 1 Year DPF Report
0220 - Archuleta County 50 JT	2195 - Discovery Canyon Campus	2010 - 3 Year DPF Report
3040 - Arickaree R-2		School Report
1450 - Arriba-Flagler C-20		No School Selected
2640 - Aspen 1		
3145 - Ault-Highland RE-9		
1530 - Bayfield 10 JT-R		

Public Data Access

■ Data Center

- District and School Performance Framework reports
- Interactive pie charts of the distribution of plan types
- Bar charts on the percent of points earned in the frameworks



Additional data views are available on the web

<http://www.cde.state.co.us/accountability/performanceframeworkresults>

