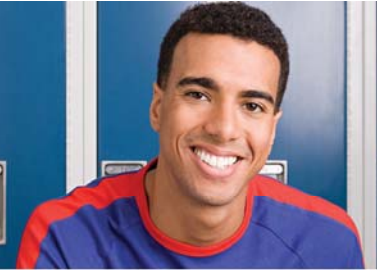


# CMAS Growth to Standard

## Accountability & Data Analysis Unit



### Background

Colorado educational accountability law (22-11-203(1)(a)), requires that a ‘Growth to Standard’ measure be developed for the statewide Math and English Language Arts assessments and included in the district and school performance frameworks. Simply defined, the Growth to Standard metric is designed to determine how much yearly growth a student must achieve to obtain a higher performance level on state assessments within a prescribed amount of time. If the student is already performing at grade level, the metric is designed to determine how much yearly growth is needed for the student to maintain their current level of performance.



### Growth to Standard in Statute & Rulemaking

Growth to Standard, previously known as Adequate Growth, has been included within Colorado educational accountability law since 2009. However, it was previously defined in statute based on specific time and performance criteria that were not necessarily aligned to developmental trajectories which served to reduce its usefulness. Per the 2019 draft rules (10.10.18) – 1 CCR 301-1, flexibility now exists in regards to the specific calculation methodology. The related statute and draft rules are as follows:

- 1 CCR 301-1 3.05 Student academic growth to standards shall be calculated as follows: (1) By no later than November 1st of each year, the Department shall calculate, to the extent practicable, what will constitute adequate longitudinal academic growth for each student for that school year in each subject that is included in the Statewide Assessments; (2) The calculation shall be based on students’ academic growth to standards, compared to incremental targets towards meeting for students who are not yet meeting expectations, and maintaining or increasing performance for students who are already meeting expectations or exceeding grade-level expectations;
- 1 CCR 301-72 3.00 (3) (a) the definition of adequate academic growth is dependent upon the current scale score of individual students. Adequate academic growth is defined as a growth rate sufficient for a student to reach the next incremental target towards meeting state standards within a defined length of time.
- 1 CCR 301-1 3.00 (3) (b) By November 1st, or as soon as practicable, of each school year beginning in 2008, the Department will report to each school district in the state and each charter school in the state the individual student growth percentiles for each student, which students attending the respective district or school did make adequate academic growth and which students did not, and the amount of growth needed for a student to attain his or her designated incremental target within the designated timeframe. Descriptors of the amount of growth needed shall include the categories of Low, Typical, High, and the actual growth percentile needed.



The aforementioned statute and draft rules will serve to inform the work of CDE and the Technical Advisory Panel for Longitudinal Growth (TAP) as a new Growth to Standard measure is developed and adopted for use within the school and district performance frameworks.

## CMAS Growth to Standard Development Process

The Technical Advisory Panel for Longitudinal Growth (TAP), has been identified by statute as being responsible for the development of a new Colorado Measures of Academic Success (CMAS) growth to standard measure. The TAP consists of Colorado educational stakeholders and experts on longitudinal academic growth for accountability purposes and is convened by the commissioner of education to provide recommendations to the State Board of Education. The TAP initiated the development of the Growth to Standard metric during the spring of 2018. It is expected that a final recommendation for a CMAS Growth to Standard metric will be brought to the Colorado State Board of Education in spring 2019 for approval and adoption within future accountability frameworks. Future work will involve the development of a PSAT/SAT growth to standard measure.

During the October 2018 TAP meeting, the panel unanimously approved the use of an interim stepping-stone approach for the calculation of a future CMAS growth to standard measure. This coincides with the approach that has been used for our WIDA™ ACCESS 2.0 growth to standard measure (see [http://www.cde.state.co.us/accountability/access-growth-to-standard-fact-sheet\\_final\\_july-2018](http://www.cde.state.co.us/accountability/access-growth-to-standard-fact-sheet_final_july-2018)). Additional meetings are scheduled for the winter of 2018 to continue with the development process.

For additional information regarding the work of the TAP, including a future meeting schedule and recordings of past meetings, please visit: <http://www.cde.state.co.us/accountability/tap>.

## Future Inclusion in Performance Framework Reports

Per HB18-1355, the Growth to Standard metric must be incorporated within the school and district performance frameworks. The results are **NOT** likely to be included for points in 2019. Instead, they will be included on an informational basis only. It is anticipated that the measure **WILL** be included for points within the 2020 school and district frameworks.

The inclusion of the Growth to Standard metric in the performance frameworks will require that a decision be made regarding if it will be a new stand-alone performance indicator or be incorporated within the current achievement or growth indicators. This decision will also require consideration of how the indicators will be weighted relative to each other (i.e. if it was a separate indicator). If the Growth to Standard metric is incorporated into the achievement or growth indicator, a new distribution of points for the related sub-indicators would need to occur.

Feedback concerning the development of the growth to standard measure and how it will be incorporated into the performance frameworks is currently being collected as part of our HB18-1355 rulemaking process. To view the draft rules and provide feedback via our on-line survey, please visit this web-site: <http://www.cde.state.co.us/accountability>.

## Where can I learn more?

- For additional information concerning the Colorado Growth Model visit: <http://www.cde.state.co.us/accountability/coloradogrowthmodel>
- For questions about this fact sheet, contact Dan Jorgensen, PhD at: [Jorgensen\\_D@cde.state.co.us](mailto:Jorgensen_D@cde.state.co.us)
- [View all CDE fact sheets: www.cde.state.co.us/communications/factsheetsandfaqs](http://www.cde.state.co.us/communications/factsheetsandfaqs)